

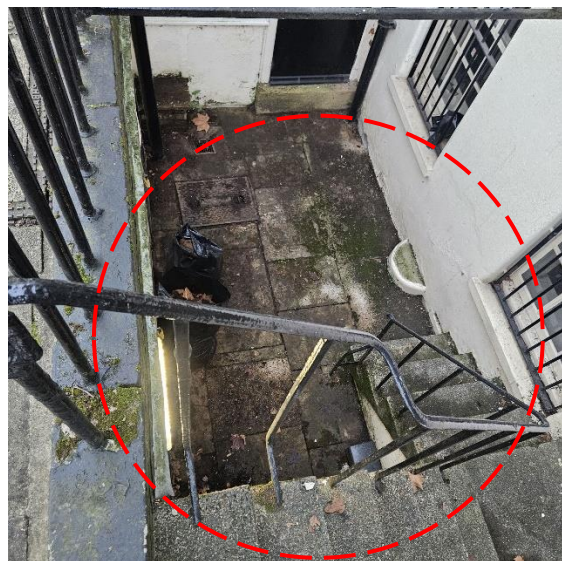
**ES London Limited, 27,28 Woburn Square, London WC1H 0AA, UK**

**SCHEDULE OF WORK:**

Wall will be demolished to make the opening that connect the both spaces internally at 27 Woburn Square, London WC1H 0AA, UK (Drawing no. 13).

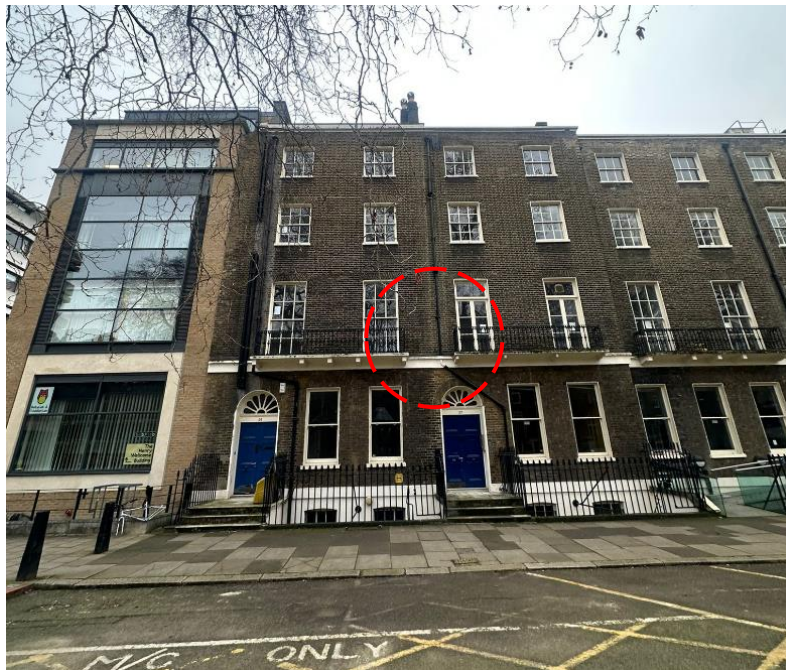


Grill will be painted and new tile work on the doorsteps of entrance and for the stairs to basements (Drawing no. 24).





Flag pole will be installed at the front of the building I.e.; 27, 28 Woburn Square, London WC1H 0AA, UK (Drawing no. 25).



Door will be removed at 28 Woburn Square, London WC1H 0AA, UK (Drawing no.13).



Door will be removed at 27 Woburn Square, London WC1H 0AA, UK (Drawing no.13).



Wall will be demolished at 27 Woburn Square, London WC1H 0AA, UK to enlarge the space and used as class (Drawing no.12).





Wall will be demolished at 28 Woburn Square, London WC1H 0AA, UK to enlarge the space and used as class (Drawing no.12).



Wall will be demolished to enlarge the space and used as class (Drawing no.16).



Wall will be demolished at 28 Woburn Square, London WC1H 0AA, UK to enlarge the space and used as open layout office (Drawing no. 17).



A decking area is proposed at the rear of the building, intended for use as an outdoor seating space (Drawing no.23).



Note:

All new walls will be stud with plasterboard finishing.