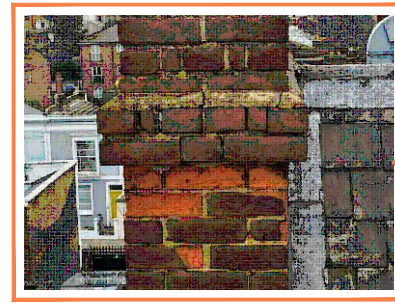


Contractors are to check all levels and dimensions before work is put in hand, and any discrepancies are to be referred to the architects

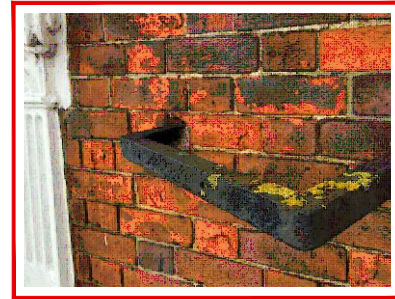
REV	DATE	DESCRIPTION	DWN	CHKD
-	00.00.00	-	-	-



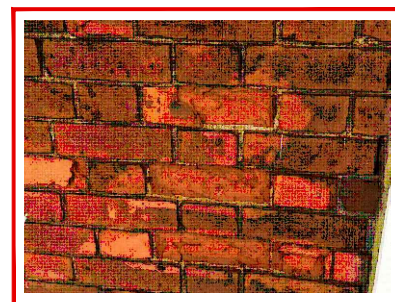
**Photo 12**  
Existing lead flashing is to be secured back to the existing brickwork using an appropriate lead sealant.



**Photo 11**  
Blown bricks are to be sufficiently repaired using a brick masonry repair filler.



**Photo 21**  
Blown/damaged bricks are to be sufficiently repaired using a brick masonry repair filler.



**Photo 22**  
Blown/damaged bricks are to be sufficiently repaired using a brick masonry repair filler.



**Photo 23**  
Blown/damaged bricks are to be sufficiently repaired using a brick masonry repair filler.



**Photo 29**  
Blown/damaged bricks are to be sufficiently repaired using a brick masonry repair filler.



**Photo 20**  
The rotten timber windows are to be sufficiently repaired or replaced to prevent further water ingress and degradation to the stone supporting cills and corbels. The cracks to the stonework around the windows are to be raked out and filled using a lime based stone repair mortar.



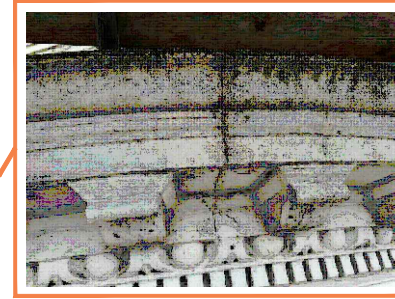
**Photo 4**  
Any damaged or cracked tiles are to be carefully removed and replaced on a like for like basis.



**Photo 5**  
Any damaged or cracked tiles are to be carefully removed and replaced on a like for like basis.



**Photo 13**  
The cracks to the upper stone walls are to be raked out and filled using a lime based stone repair mortar.



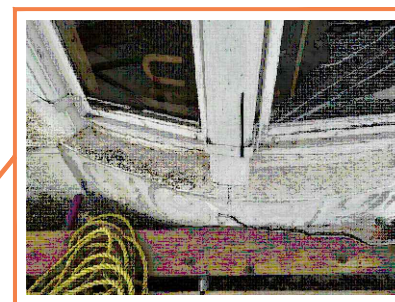
**Photo 15**  
The cracks to the upper stone corbel are to be raked out and filled using a lime based stone repair mortar.



**Photo 16**  
The cracks to the upper stone corbel are to be raked out and filled using a lime based stone repair mortar.



**Photo 14**  
The cracks to the upper stone corbel are to be raked out and filled using a lime based stone repair mortar.



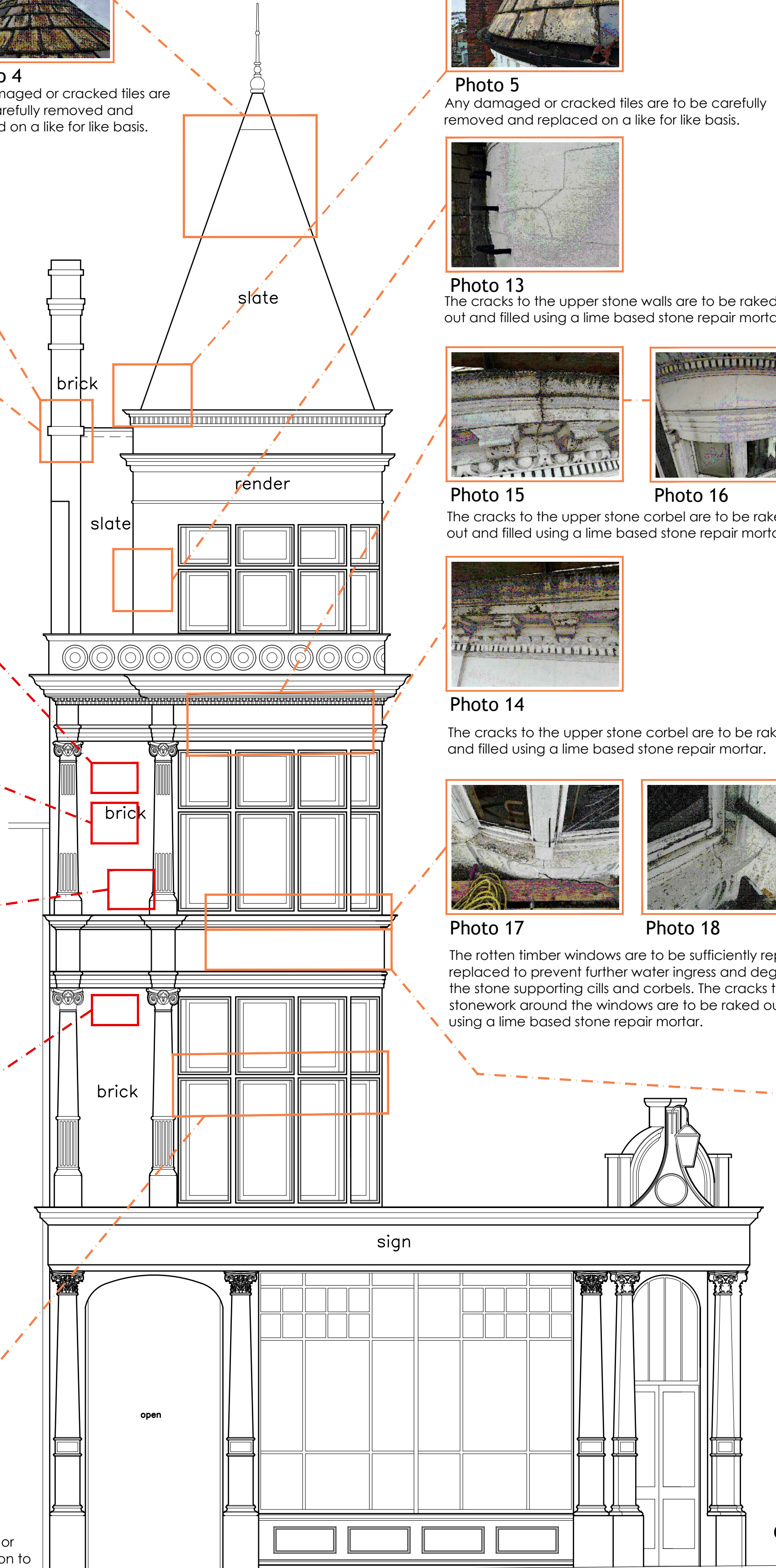
**Photo 17**  
The rotten timber windows are to be sufficiently repaired or replaced to prevent further water ingress and degradation to the stone supporting cills and corbels. The cracks to the stonework around the windows are to be raked out and filled using a lime based stone repair mortar.



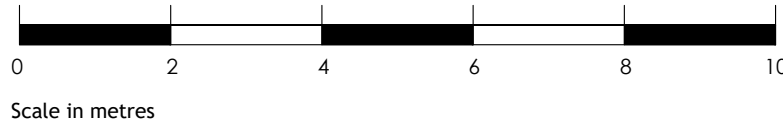
**Photo 18**



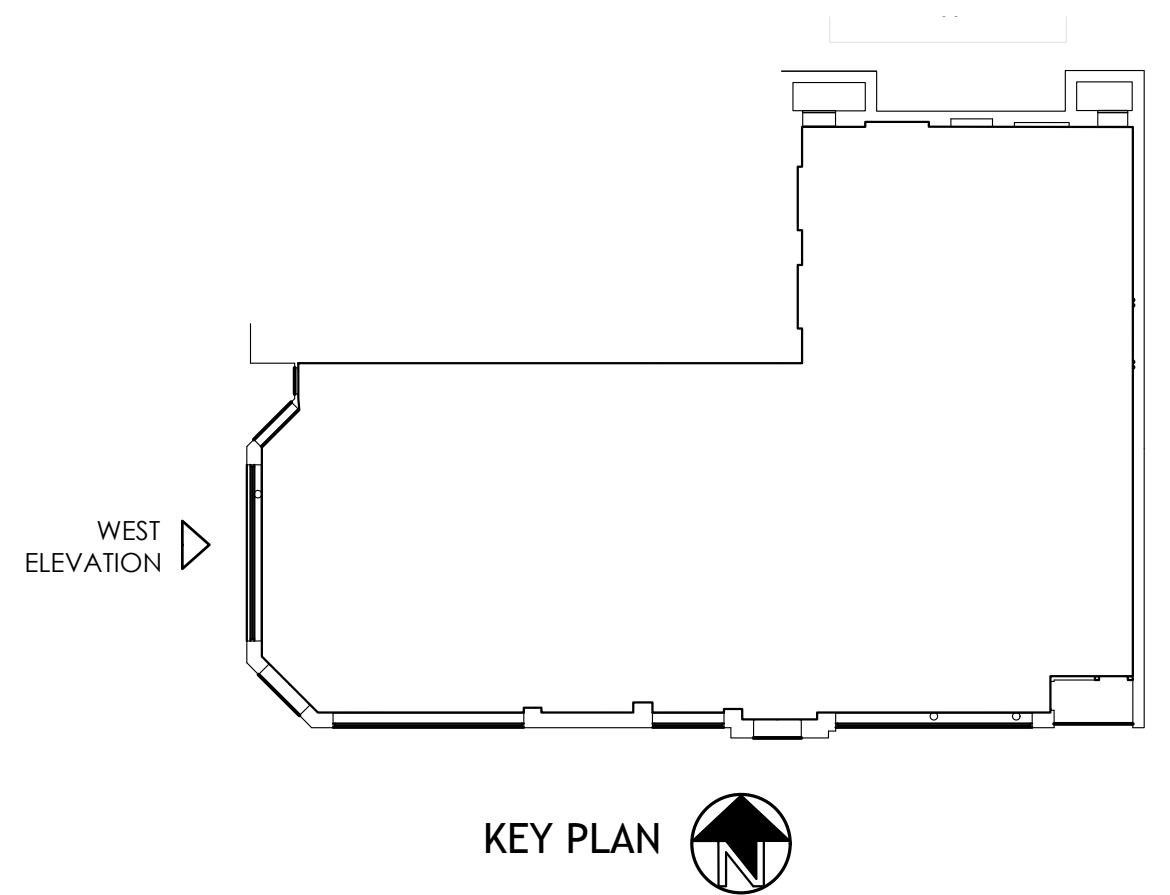
**Photo 19**  
The rotten timber windows are to be sufficiently repaired or replaced to prevent further water ingress and degradation to the stone supporting cills and corbels. The cracks to the stonework around the windows are to be raked out and filled using a lime based stone repair mortar.



WEST ELEVATION



TO BE READ IN CONJUNCTION WITH KTA  
STRUCTURAL SITE INSPECTION  
REPORT DATED 8TH JANUARY 2025.  
PHOTOGRAPH REFERENCE NUMBERS RELATE  
TO THE REPORT.



## Planning



Architects + Interior Designers Limited  
123 NEW LONDON ROAD, CHELMSFORD,  
ESSEX, CM2 0QT  
TEL: +44 (0) 1245 269755 FAX: +44 (0) 1245 250310  
E-MAIL: admin@lap-architects.co.uk

www.lap-architects.com

project

The Assembly House  
292-294 Kentish Town Road  
London, NW5 2TG

client



drawing title

Proposed West Elevation

drawing number	revision
9312-06	-
checked SG	drawn LAC
scale 1:50 @ A1 (1:100@A3)	date Feb 2025

This drawing is the property of LAP Architects + Interior Designers Ltd. and must not be copied or reproduced in any way in whole or in part without the express permission of LAP Architects + Interior Designers Ltd. Copyright © LAP Architects + Interior Designers Ltd.