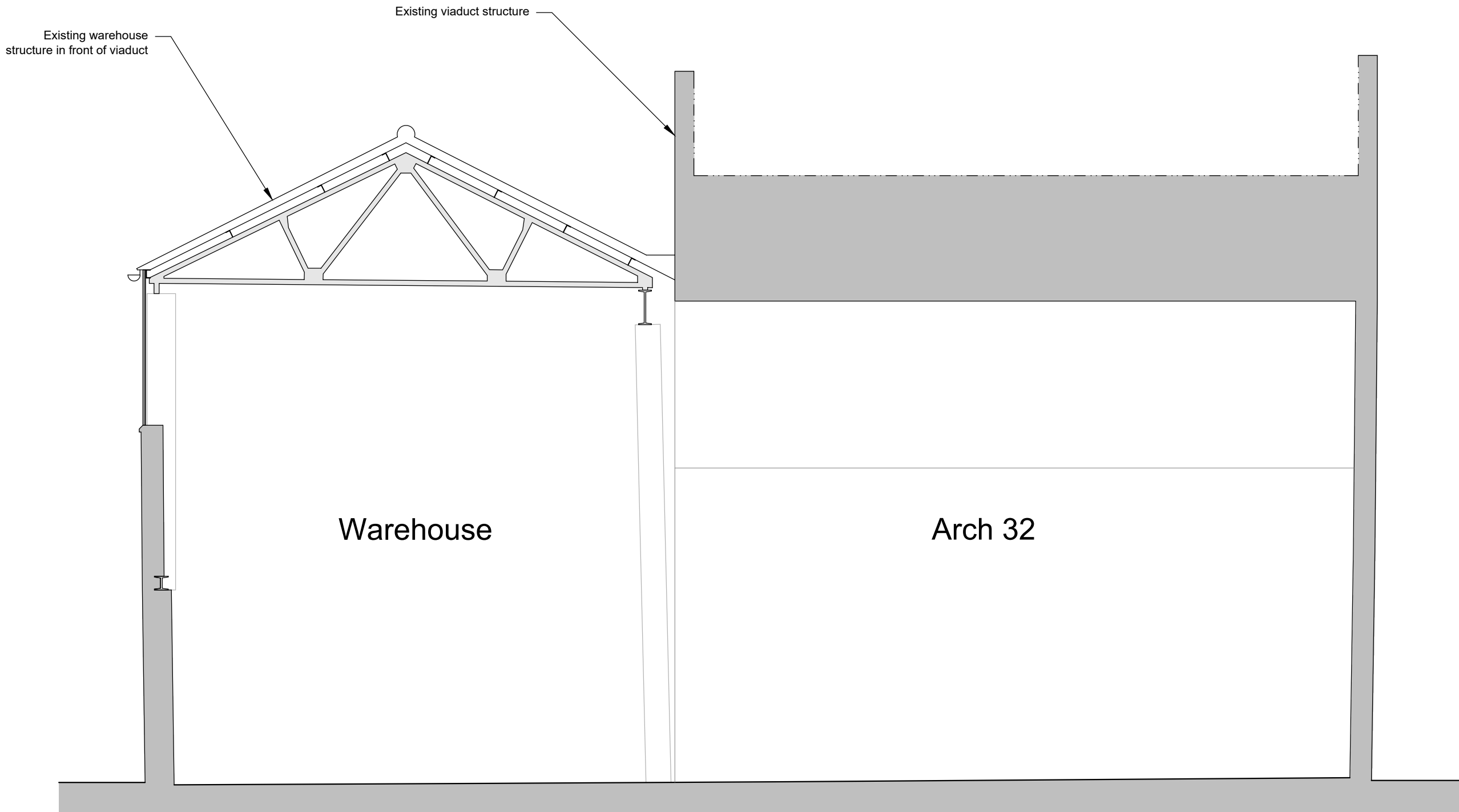
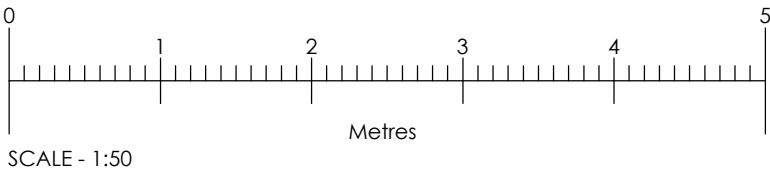


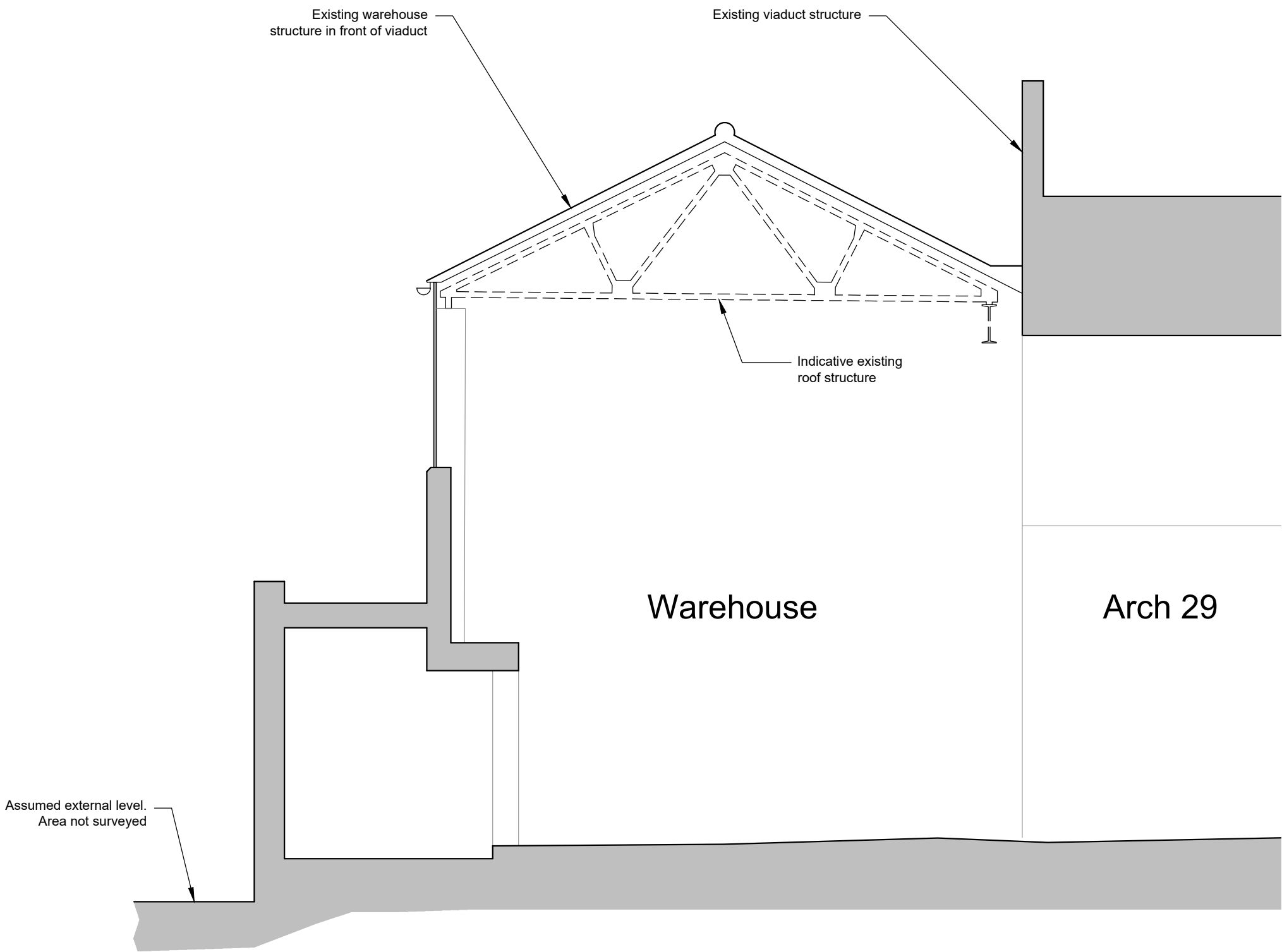
Notes:

1. Copyright: The contents of this drawing may not be reproduced in whole or in part without the written consent of Robinson Kenning & Gallagher.
2. All dimensions to be checked on site by Contractor.
3. Where discrepancy occurs between specification and drawings then Robinson Kenning & Gallagher must be notified immediately.



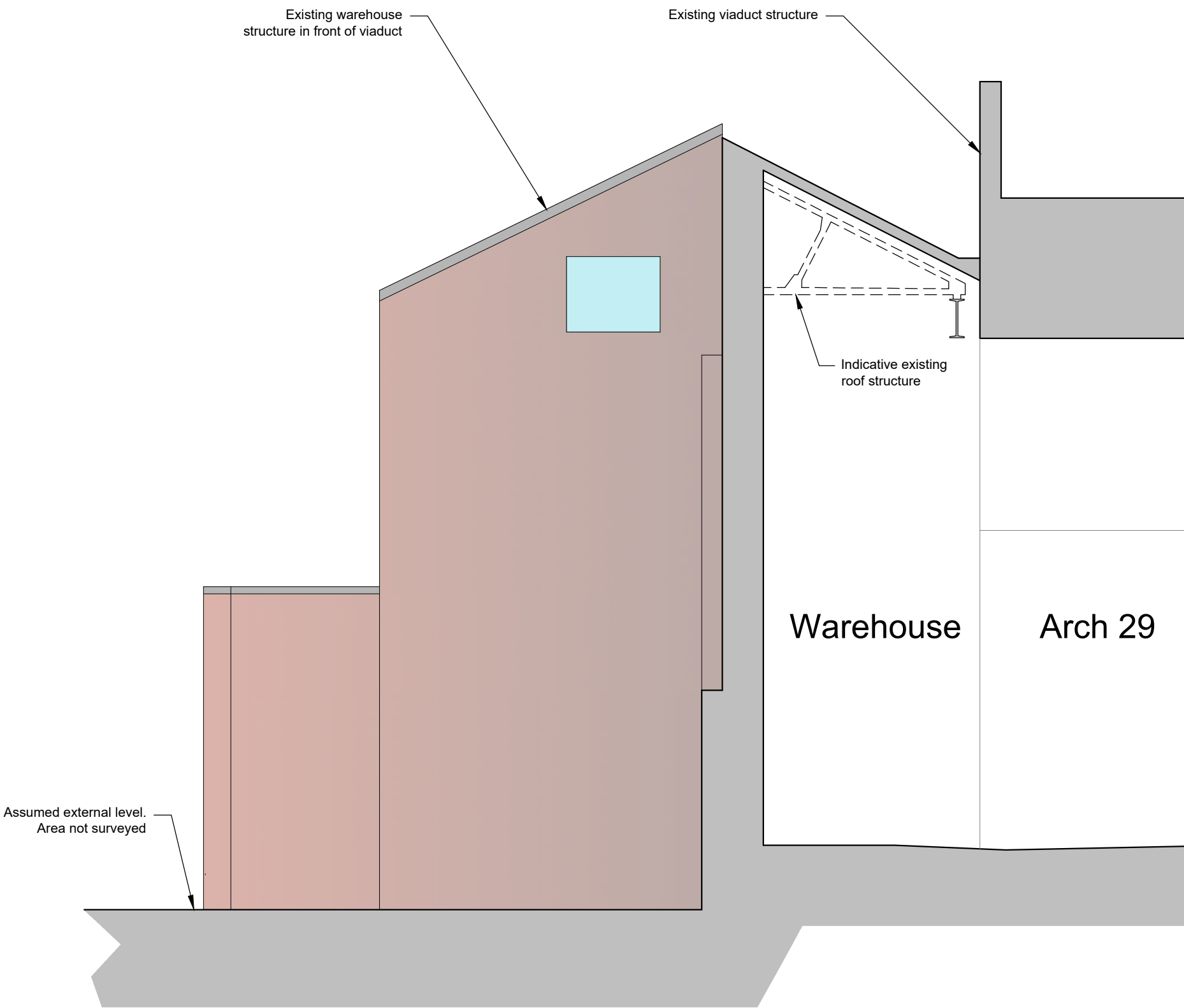
Existing Section C-C

Scale 1 : 50



Existing Section D-D

Scale 1 : 50



Existing Section E-E

Scale 1 : 50

REV	DATE	BY	CHK	ATHD
DRAWING STATUS: PLANNING				
<div><div><div><div><div></div><div></div></div><div><div></div><div></div></div></div><div><div>Robinson Kenning &amp; Gallagher</div><div>Architects &amp; Surveyors</div></div></div><div><div><div><div></div><div></div></div><div><div></div><div></div></div></div><div><div>Airport House, Purley Way, Croydon, Surrey, CR0 0XZ</div><div>T: 020 8684 8125 E: info@rkpartnership.co.uk W: www.rkpartnership.co.uk</div></div></div></div>				
CLIENT: <div>THE ARCH CO</div>				
PROJECT: <div>Arches 29-41 Castle Mews</div> <div>Castle Road, London NW1 8SY</div>				
TITLE: <div>Existing Sections C-C, D-D &amp; E-E</div>				
SCALE @ A1: 1:50	CHECKED: KWS	APPROVED: KWS		
CAD FILE:	DESIGN DRAWN: DPD	DATE:	20/08/2024	
PROJECT No: 4758	DRAWING No: 23-4758-PD-007	REV:	-	