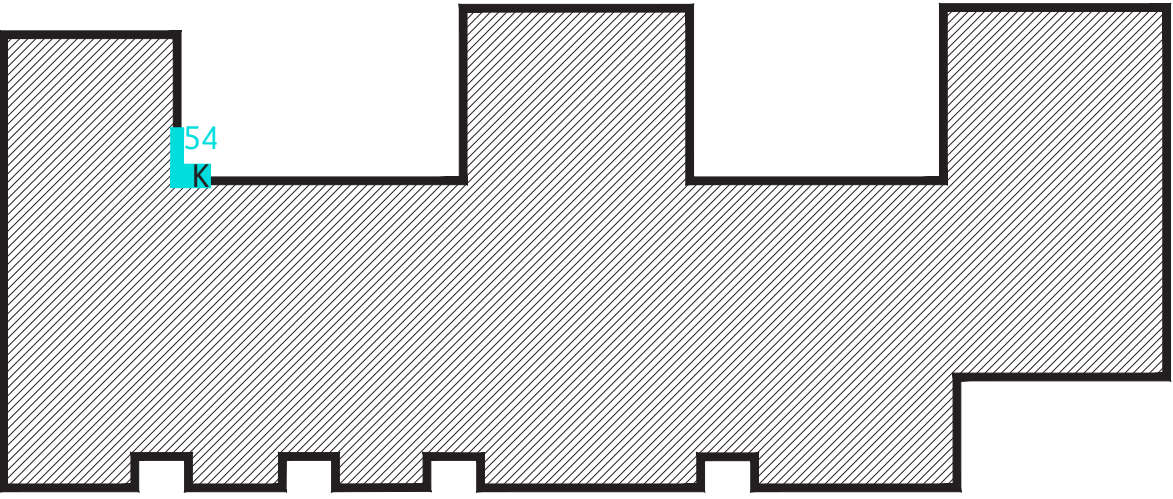
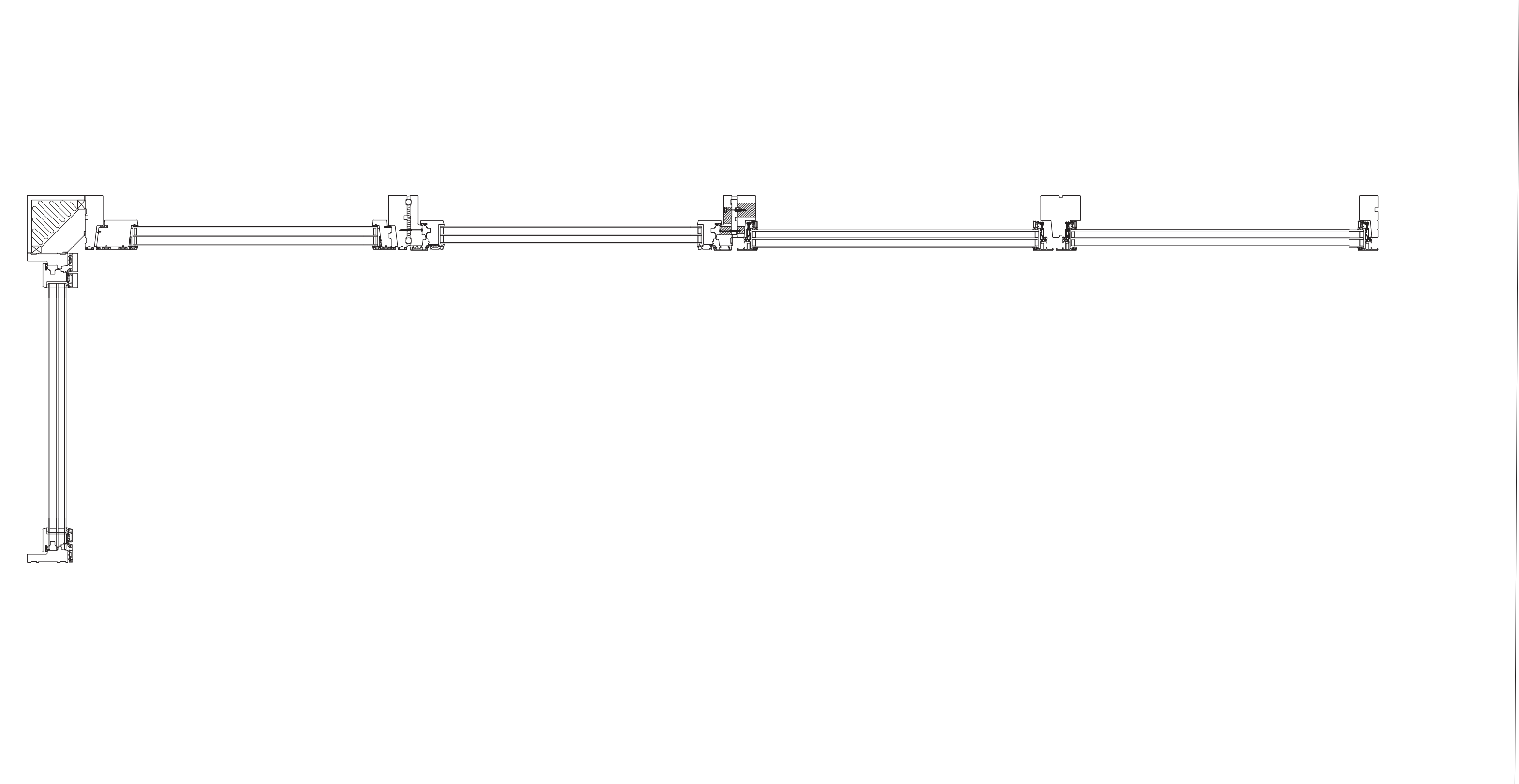
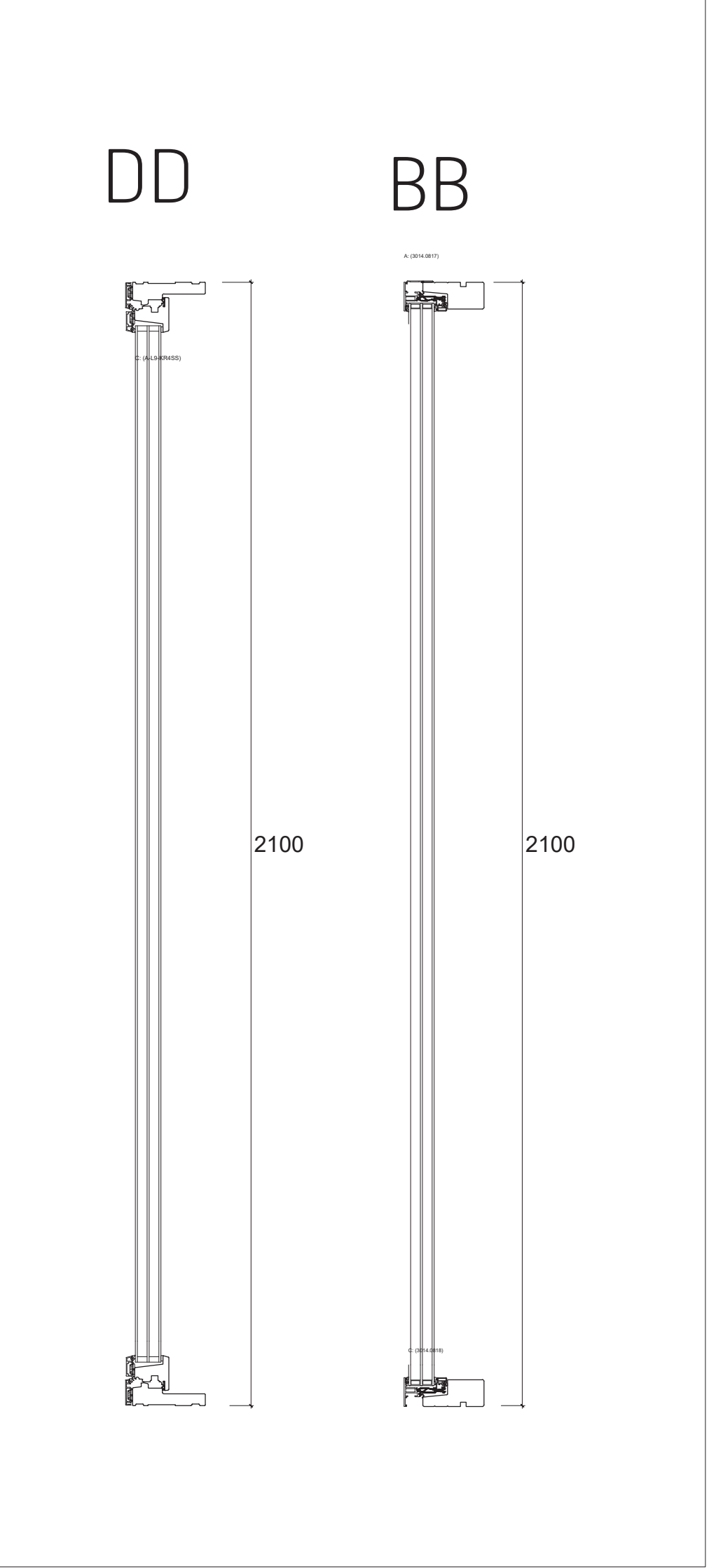
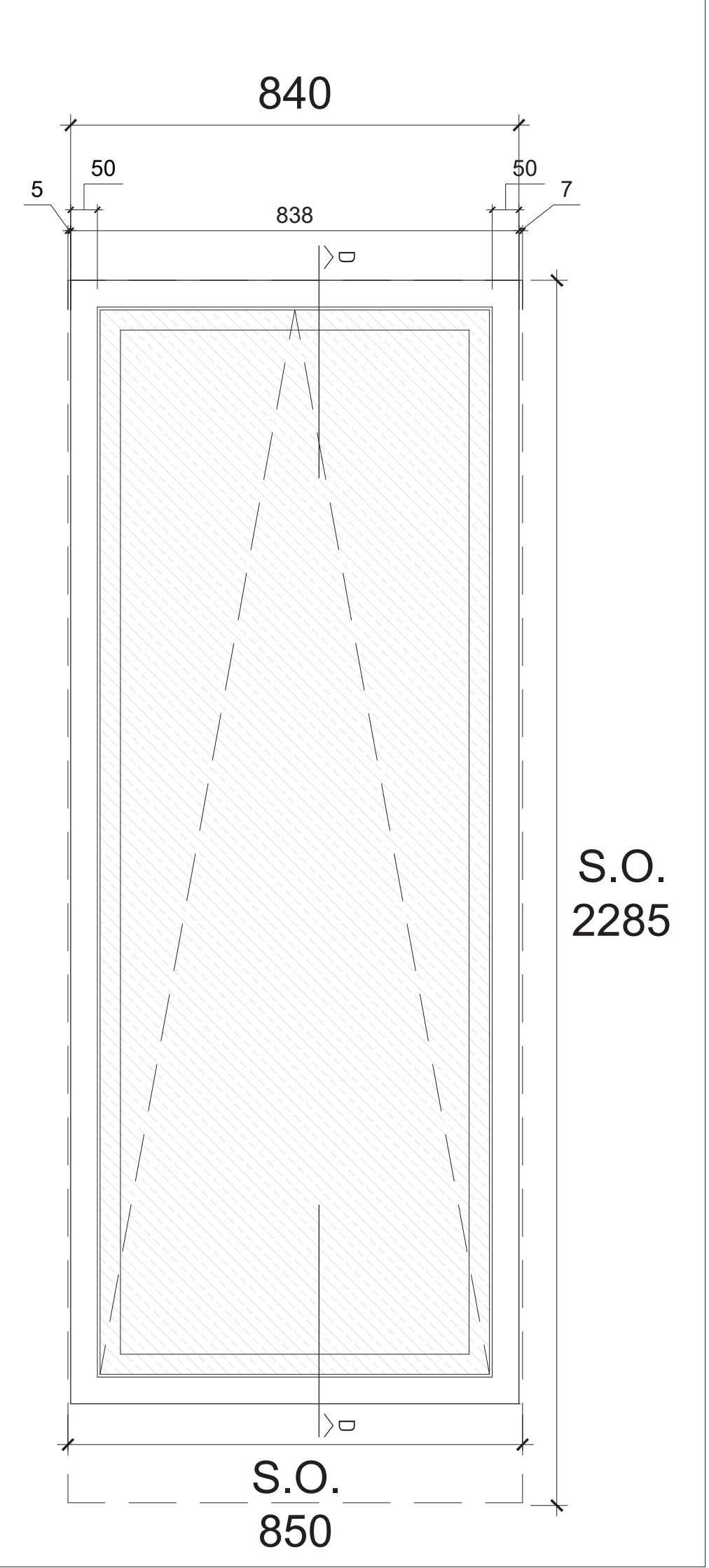
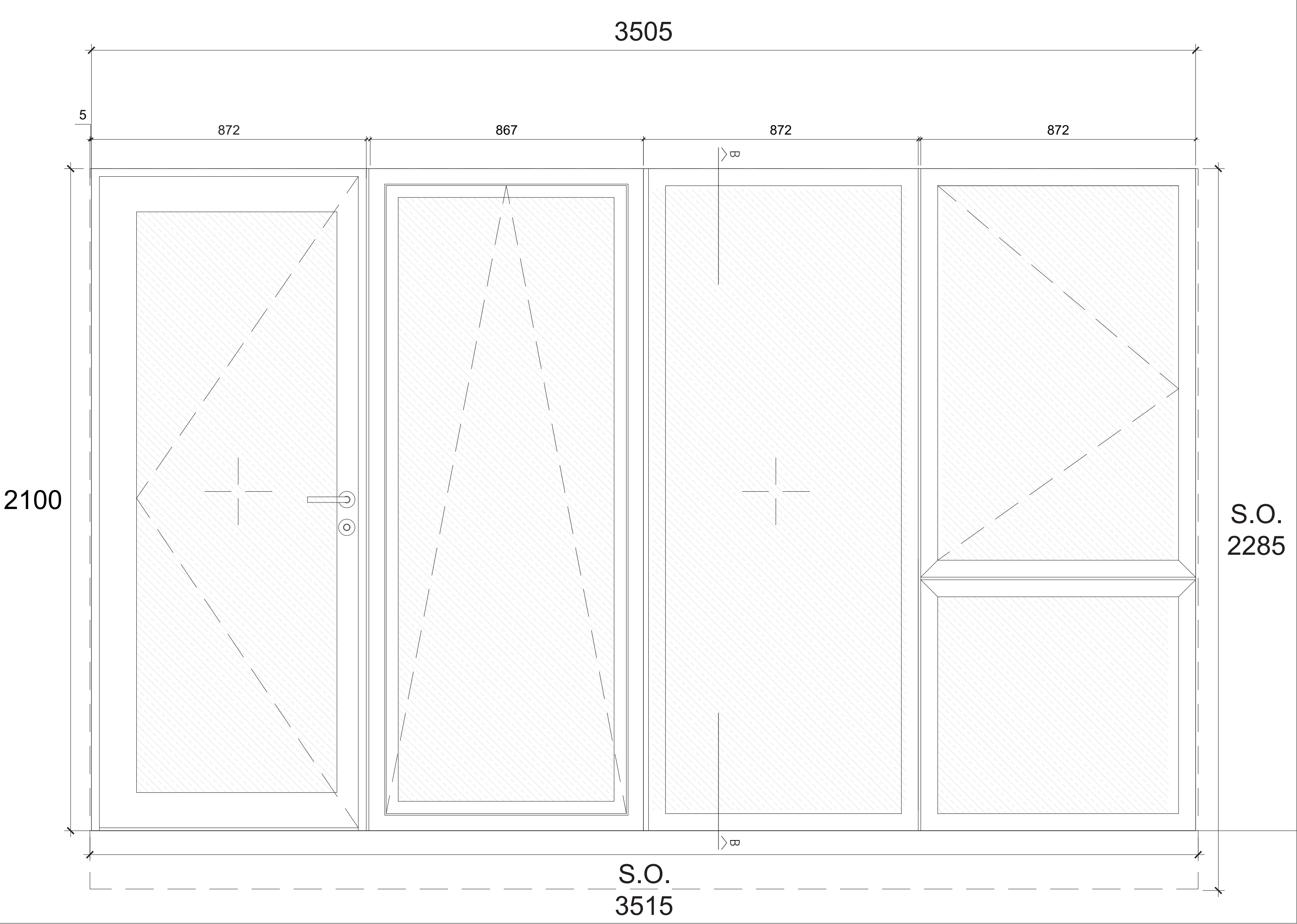
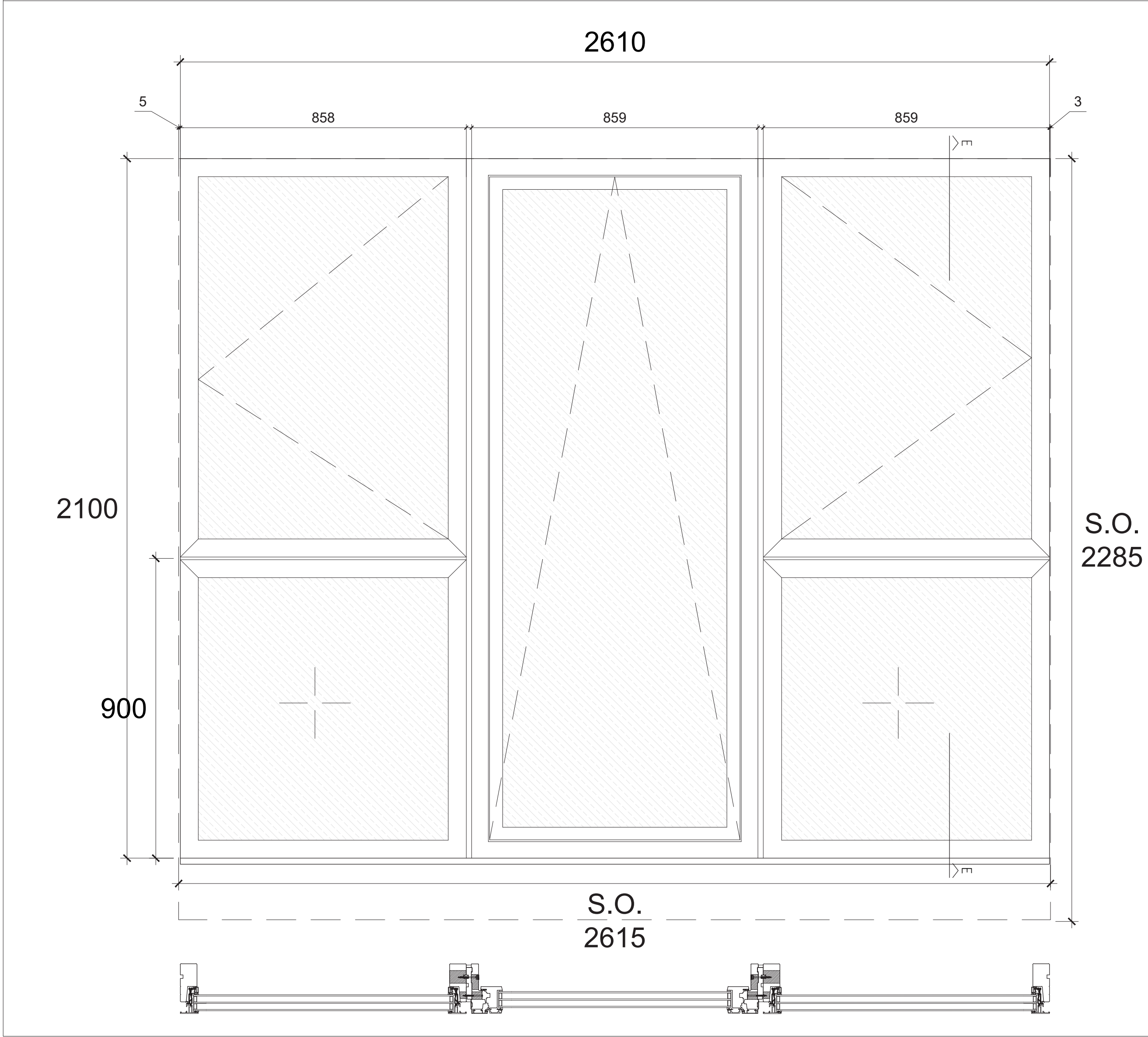


Window Type K

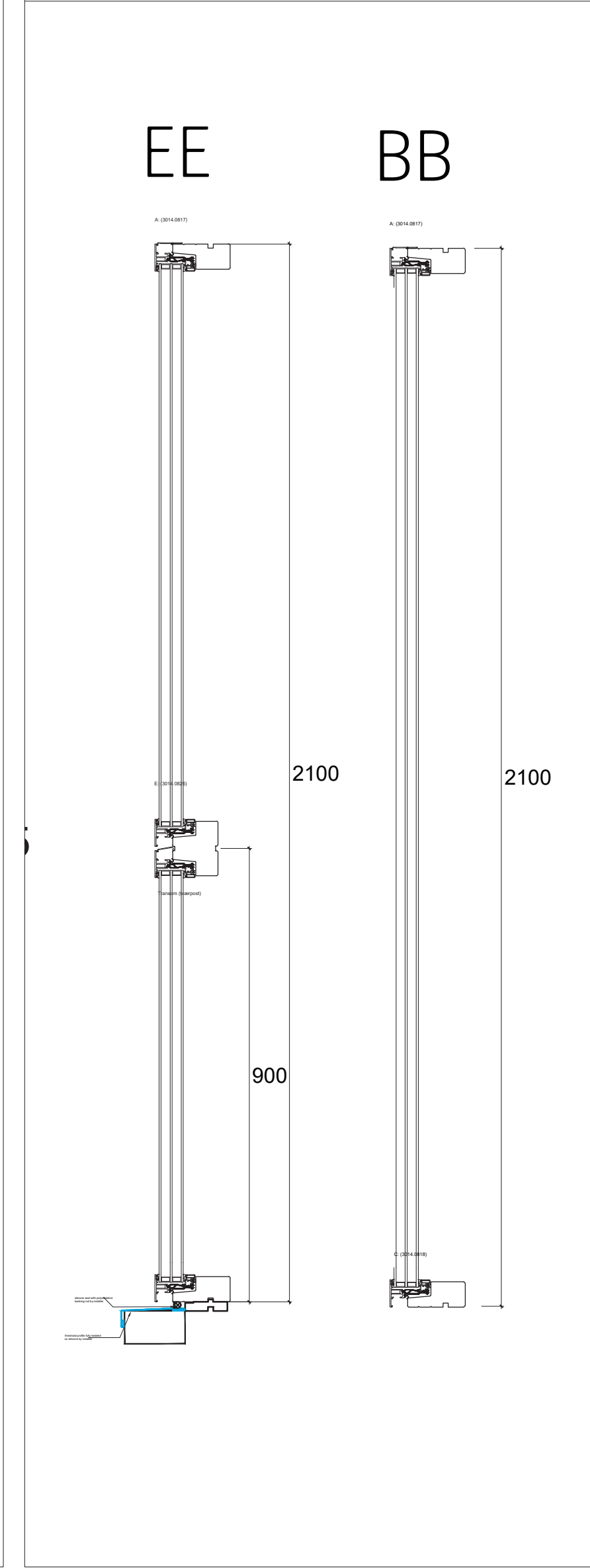
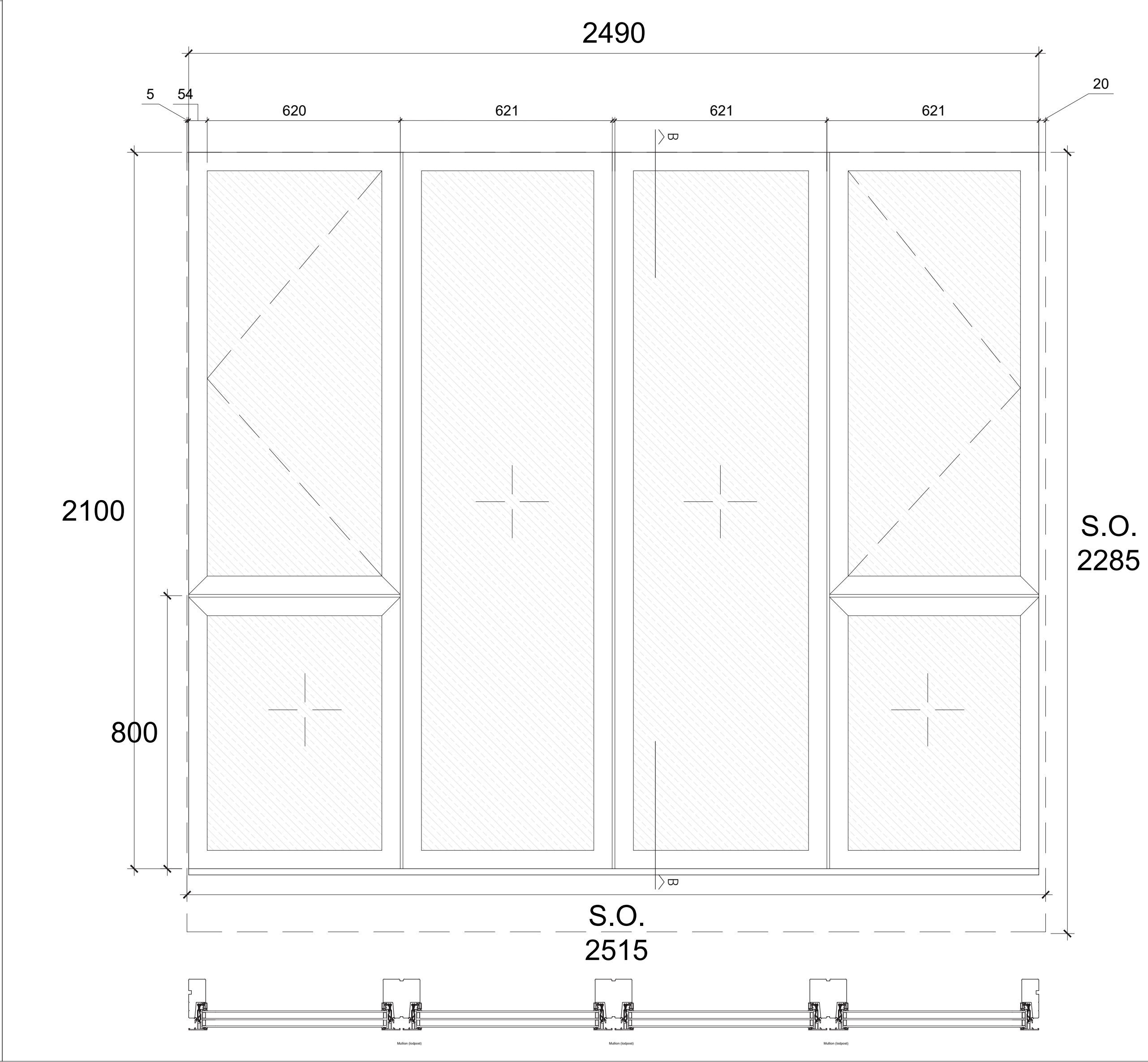


WINDOW TYPE K
Bespoke Bi-Fold Door with Side Casement Door and Fixed Panel
B1 Light Bronze anodized aluminum frame to match existing
1 x outward opening side hung door, 1 x tilt and turn, 1 x fixed pane, 1 x side hung casement
1 x tilt and turn
Extra Clear Glass
Multipoint Locking, standard handle
1.4 W/m²K U-Value

Window Type L

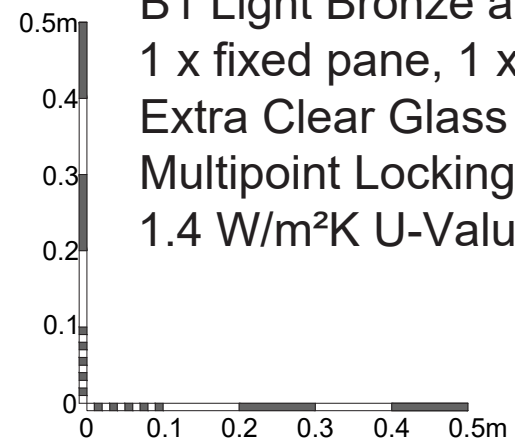


Window Type M

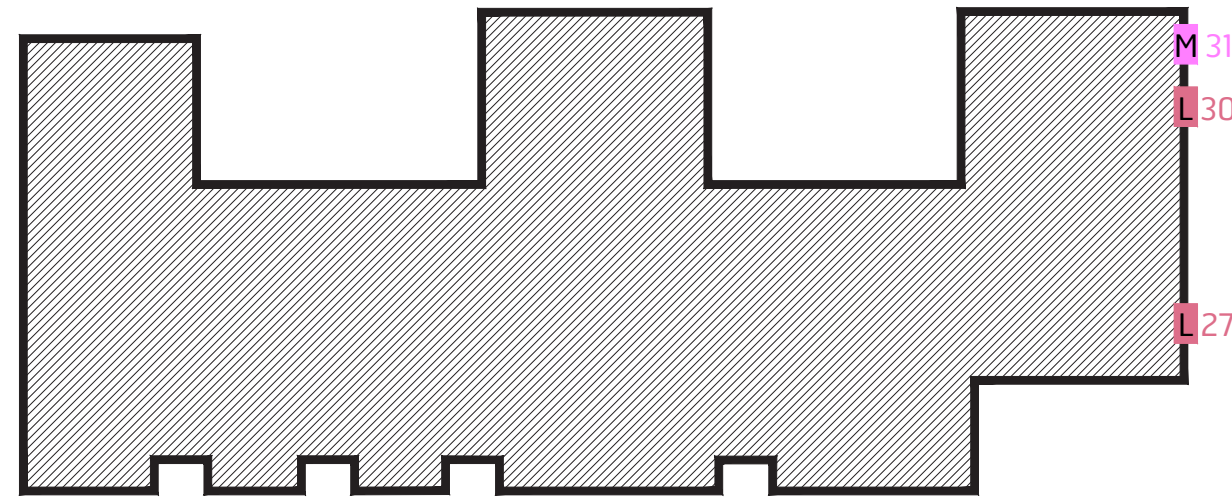


WINDOW TYPE L
Side Casement with Fixed Panes
B1 Light Bronze anodized aluminum frame to match existing
1 x fixed pane, 1 x tilt and turn, 1 x casement over fixed pane
Extra Clear Glass
Multipoint Locking, standard handle
1.4 W/m²K U-Value

WINDOW TYPE M
Fixed Panes with Side Casements
B1 Light Bronze anodized aluminum frame to match existing
2 x fixed pane, 2 x side hung over fixed panes
Extra Clear Glass
Multipoint Locking, standard handle
1.4 W/m²K U-Value



BEAUFORT COURT - MAYGROVE ROAD

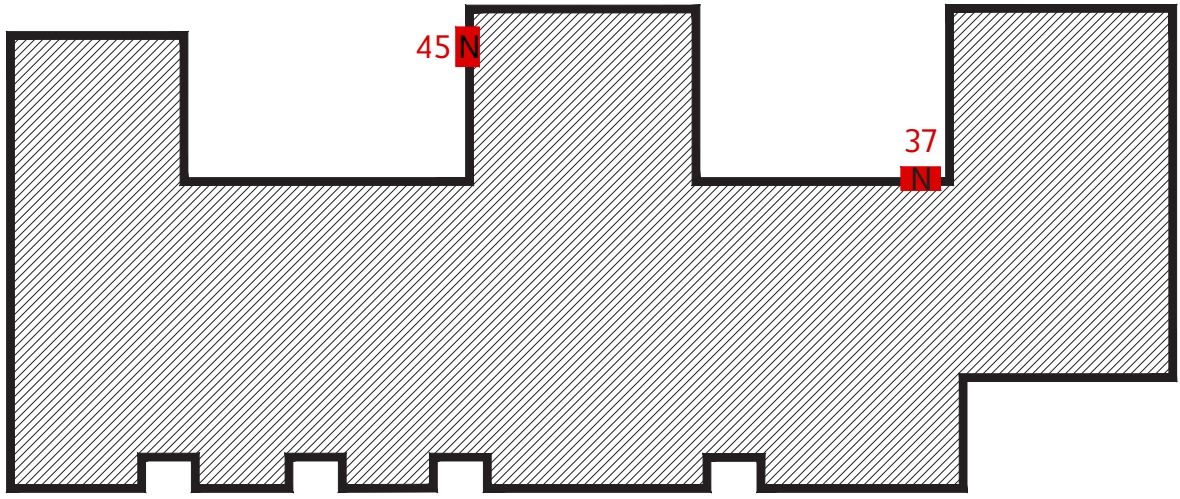
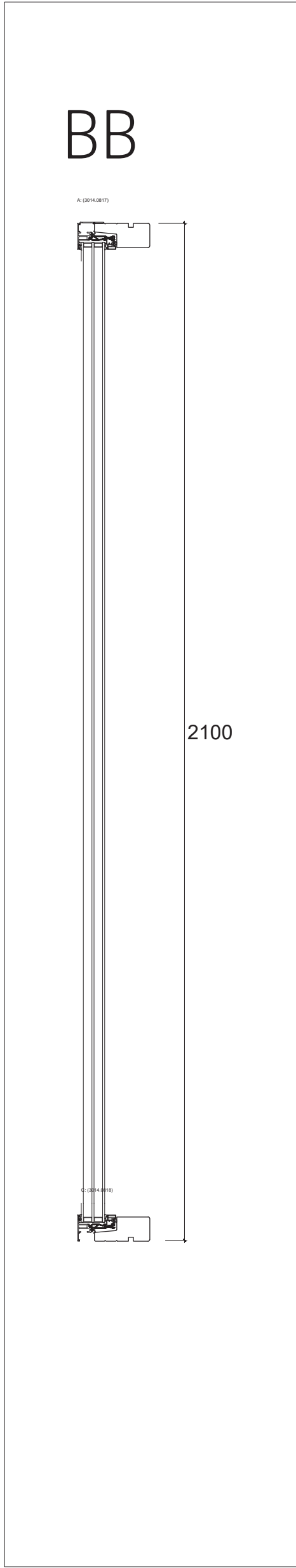
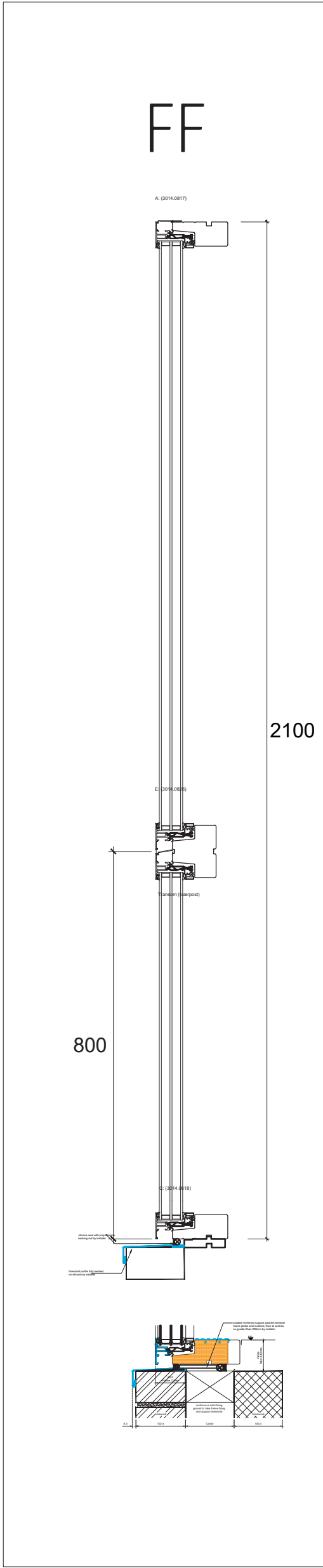
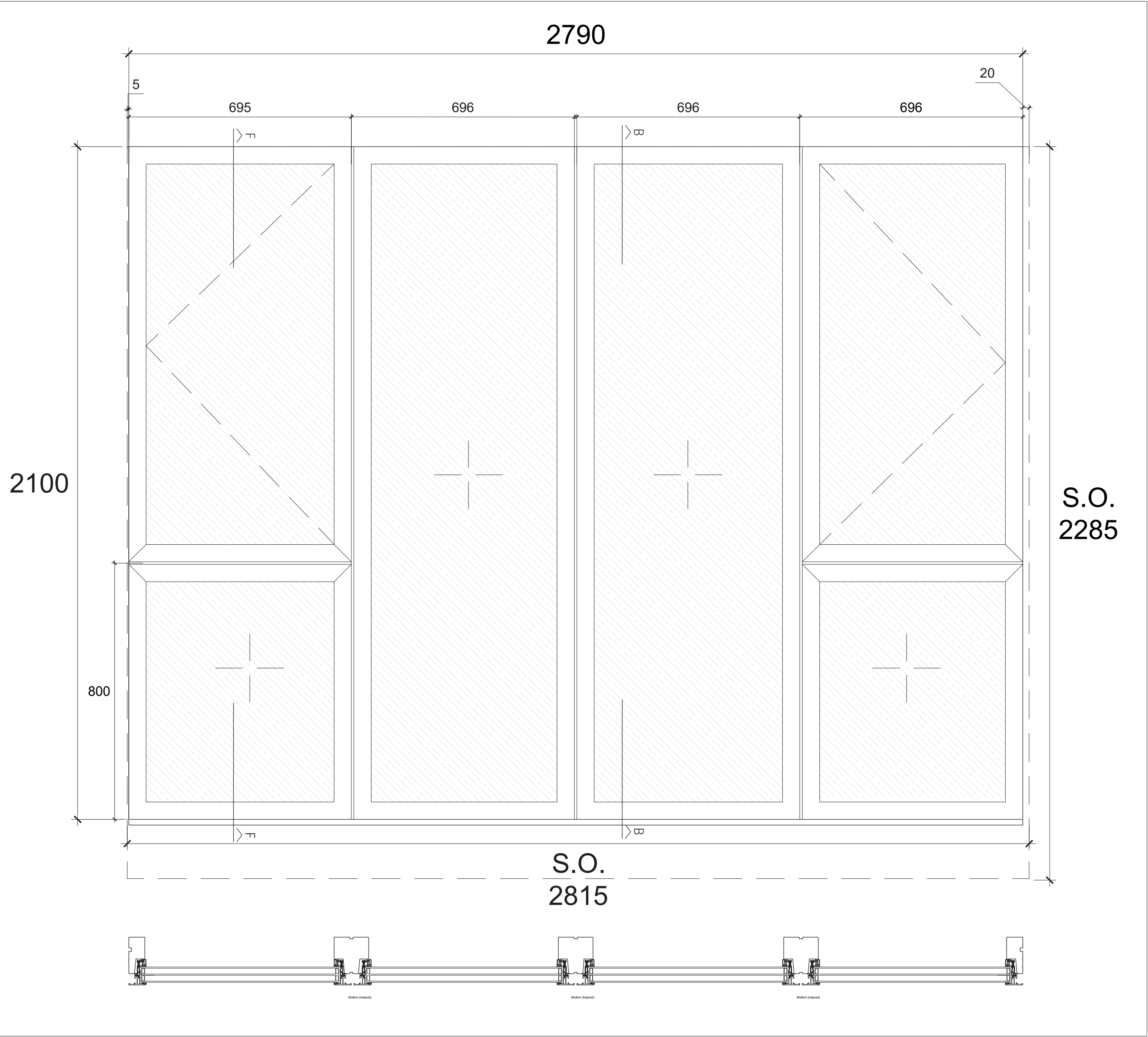


Brooks Murray Architects
41 Tabernacle Street, London, EC2A 4AA
+44 (0)2077399955 admin@brooksmurray.com

brooks
murray

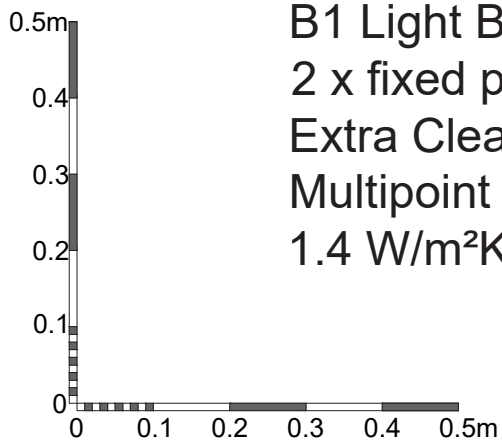
CLIENT: PRIVATE CLIENT
JOB: Roof Extension to Beaufort Court
65 Maygrove Road,
NW6 2DA
DRAWING TITLE: External Openings Schedule
Type L & M
SCALE: 1:10 @ A1
DATE: February 2025
STATUS: DC
DRAWING NUMBER: 1244.22-DC-657
REV: CF
ISSUED BY: CF

Window Type N ■



WINDOW TYPE N

Fixed Panes with Side Casement
B1 Light Bronze anodized aluminum frame to match existing
2 x fixed pane, 2 x side hung over fixed
Extra Clear Glass
Multipoint Locking, standard handle
1.4 W/m²K U-Value



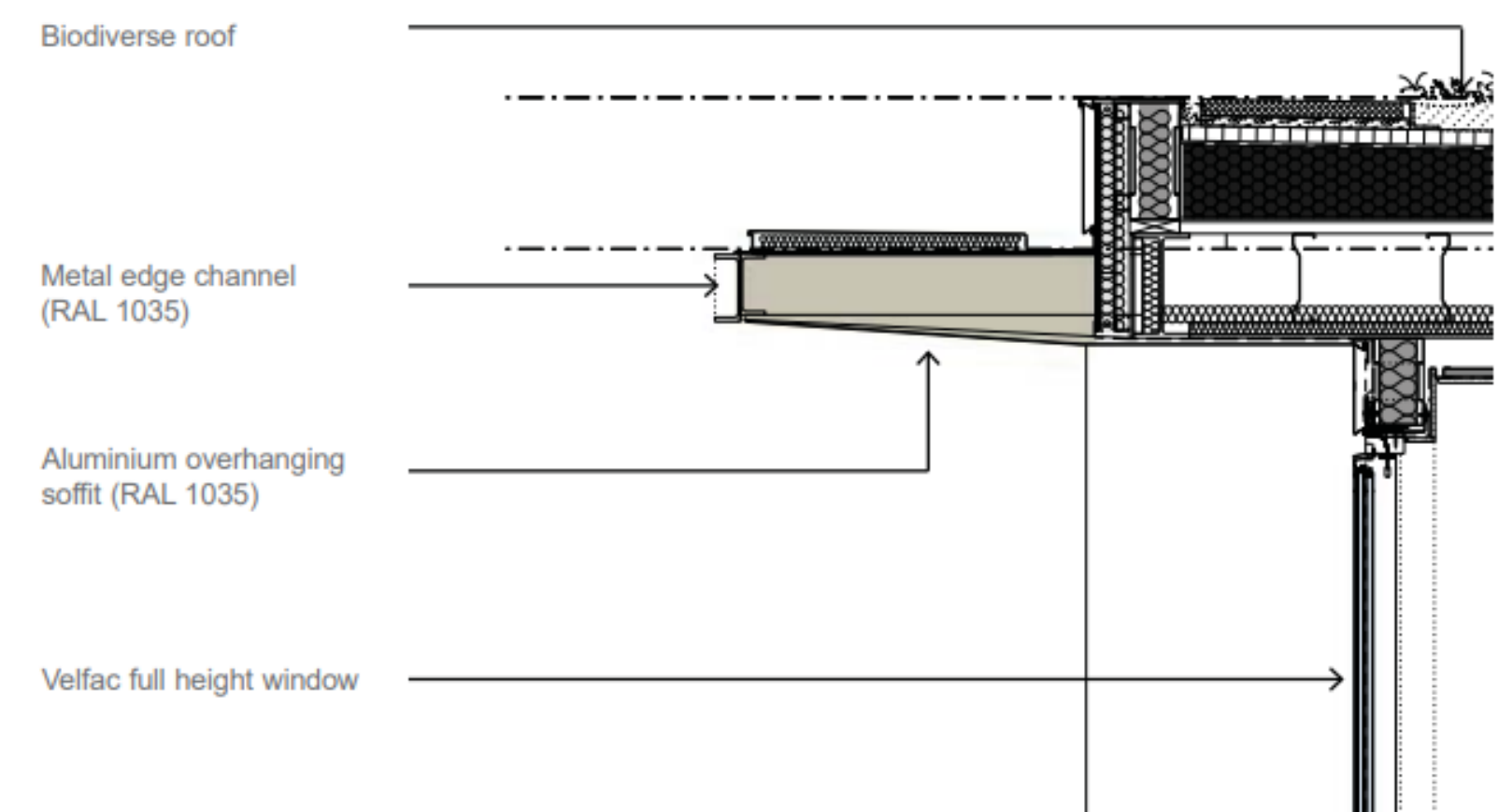
BEAUFORT COURT - MAYGROVE ROAD

Part B- Facing Materials

a) Render

The external render to terrace edge will be RAL 1035 (Light Bronze) to match approved drawing in REF: 2015/4426/P, a silicon based render to match existing finish to roof overhang, . The render system is shown in 1:10 details on pages 18 &19.

Adjacent are several photographs of the product as used on other projects.



Hopkins Associates Drawing - REF: 2015/4426/P

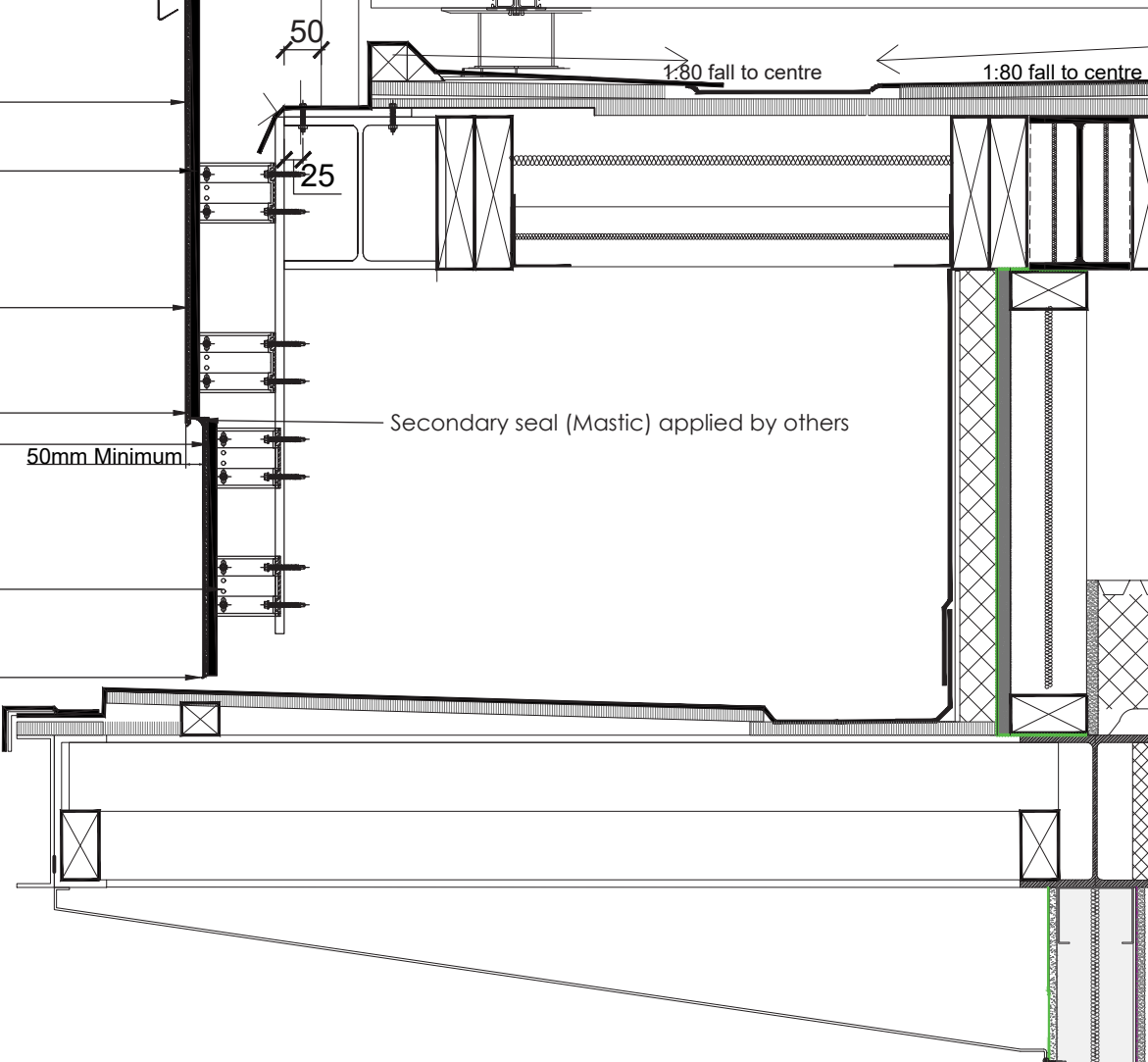
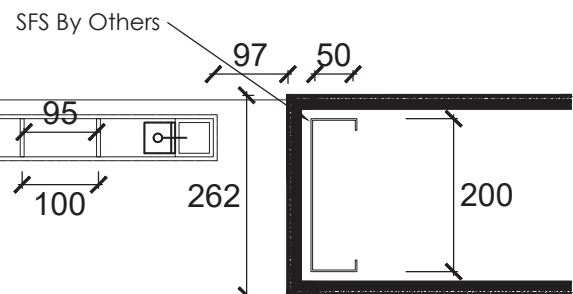
Part B- Facing Materials

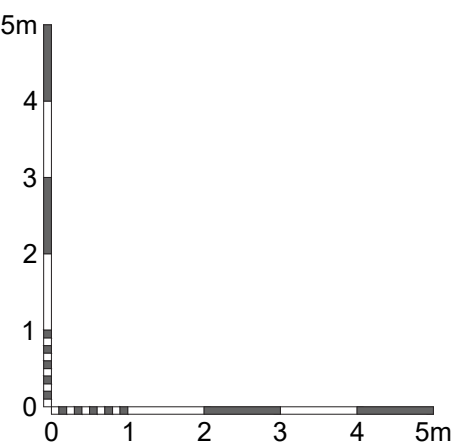
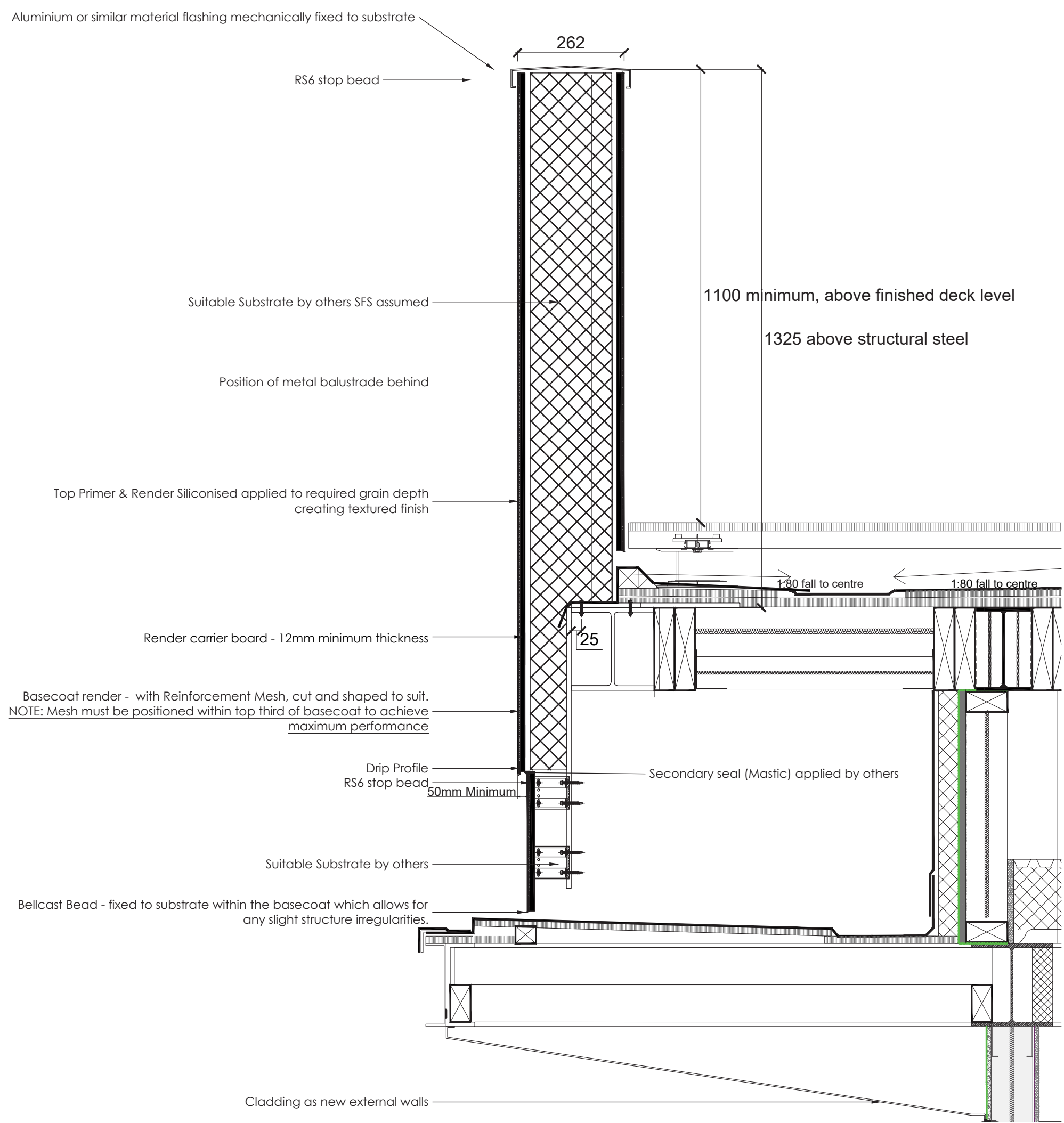
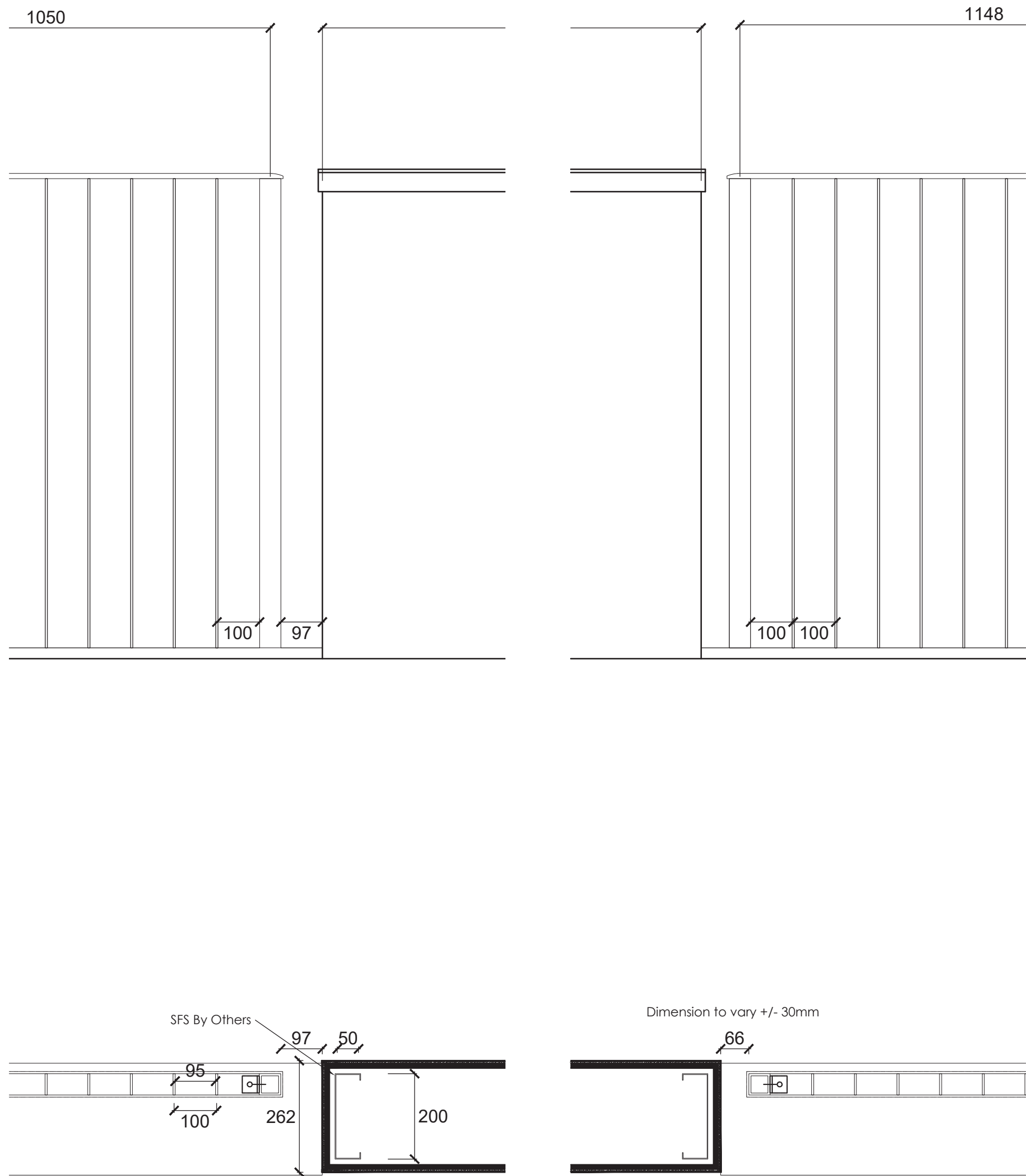
b) Railings

The railings occur on balconies on all elevations.

As per the approved planning application the railings are to match the windows in colour. This is RAL 1035 -Light Bronze.

Railing details are shown on the following pages;
Page 18 - Drawing 663 - Proposed Terrace Railing Details 01
Page 19 - Drawing 664 - Proposed Terrace Railing Details 02





Part B- Facing Materials

c) Cladding

The new cladding is to match the cladding below in profile and finish. This will be a light-grade, powder-coated aluminium, finish “light bronze -C32) RAL 1035, secret fixed.

Physical samples could be delivered directly to the planning department.



CCTV for Bike storage

The CCTV for the bike stores is an already-installed system.

QVIS CCTV Camera heads to be seen to all areas, with HIKVISION Digital Video Recorder.



1244.22 CCTV PHOTO a



1244.22 CCTV PHOTO b



1244.22 CCTV PHOTO c



1244.22 CCTV PHOTO d