



## PLANNING

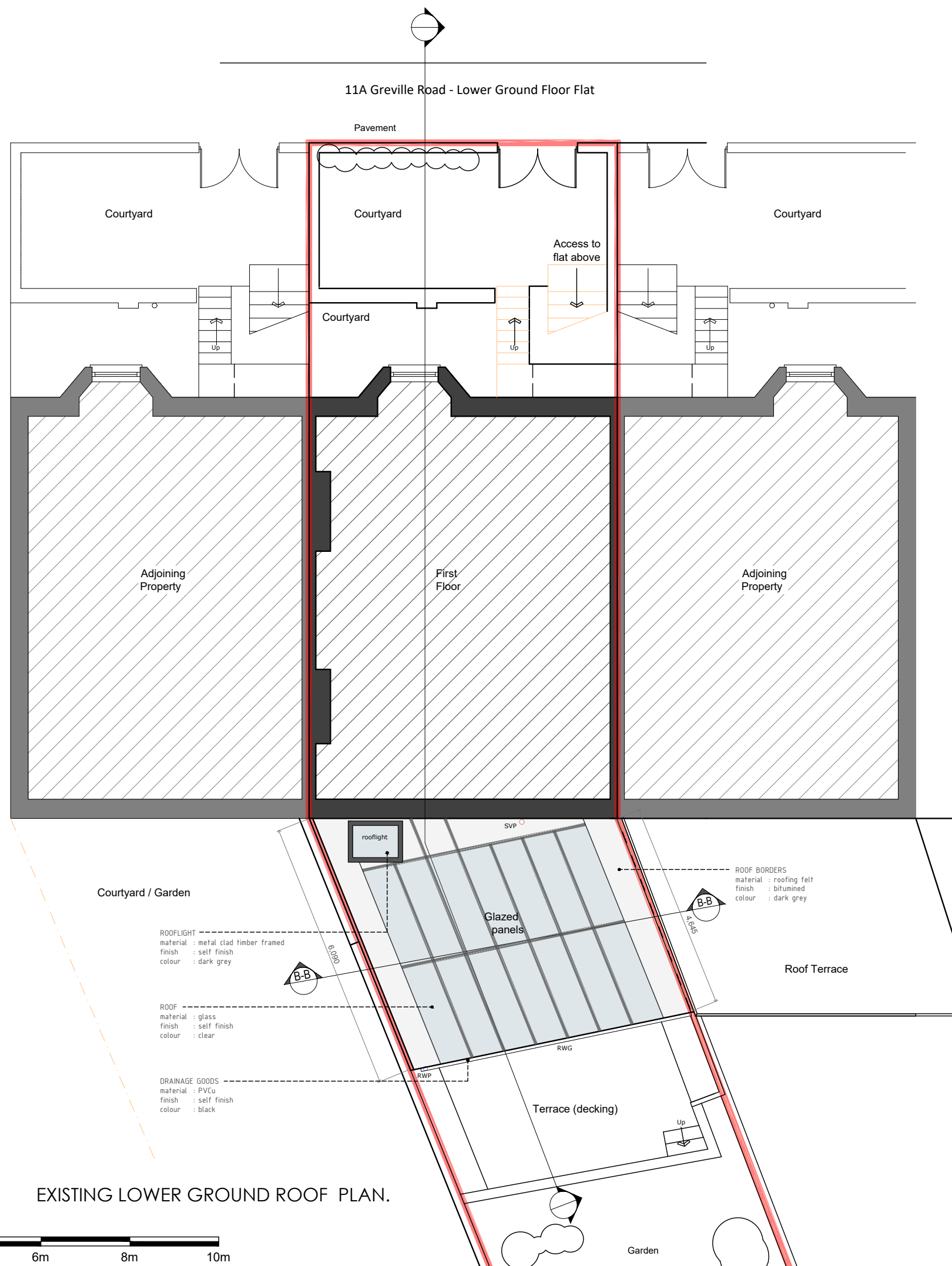
Date: 25.03.2025

NOTES

6. All materials and building components specified must be installed in accordance with the manufacturers instructions.

ALL NEW MATERIALS TO MATCH EXISTING

**BESPOKE**  
**LIVING AIC**  
ARCHITECTURE | INTERIORS | CONSTRUCTION



1:100

