

Supplementary Information: Materials Schedule

FOR

Flat 2, 16 Lyndhurst Gardens, NW3 5NR

February 2024

1. INTRODUCTION

This schedule has been prepared in support of the full planning application (your planning reference 2022/1003/P). The submitted information provides further details of the materials proposed in the application.

2. DETAILS OF MATERIALS

2.1 External Windows & Doors

All new timber windows of the development will be replaced with new double-glazed white-painted sash windows. The new doors to the front and the rear elevation will match the existing ones and will be to the same detail as the sash windows. Please refer to *Appendices A.1* for typical window section details.

All new aluminium framed windows and glazing will be of a bronze/beige colour (RAL 7006 or similar), complementing the external cladding.

2.1 Masonry

All new and infill elements of masonry will be in brickwork to match the existing.

2.3 Rear metal balustrade

The new metal railing to the rear staircase & terrace will be of a traditional style black metal handrail. Please refer to the below images as an example (*Figure 1 and Appendix A.2 for connection details*);



Figure 1 – Illustration only - Black metal railings fixed to masonry on terrace parapet

2.4 External Metal Cladding

The proposed metal cladding to the extensions at Ground and Lower Ground floor, including the roof, will be RHEINZINK-PRISMO brown. Refer to Figure 2 & 3.

<https://www.rheinznk.co.uk/material-surfaces/materials-surfaces/prismo/>

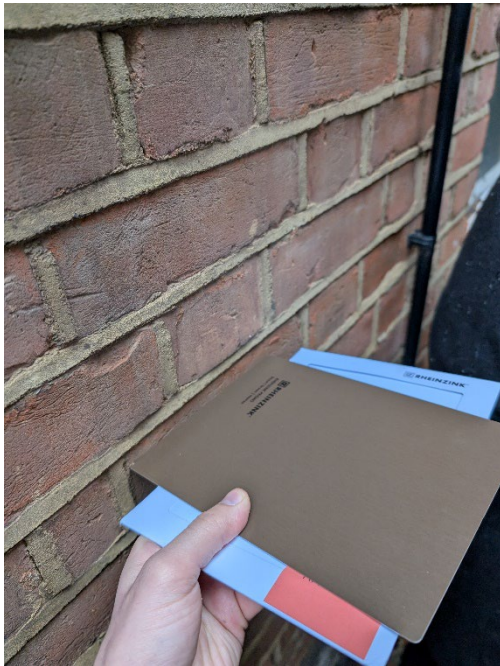


Figure 2 – Proposed metal cladding against existing brickwork

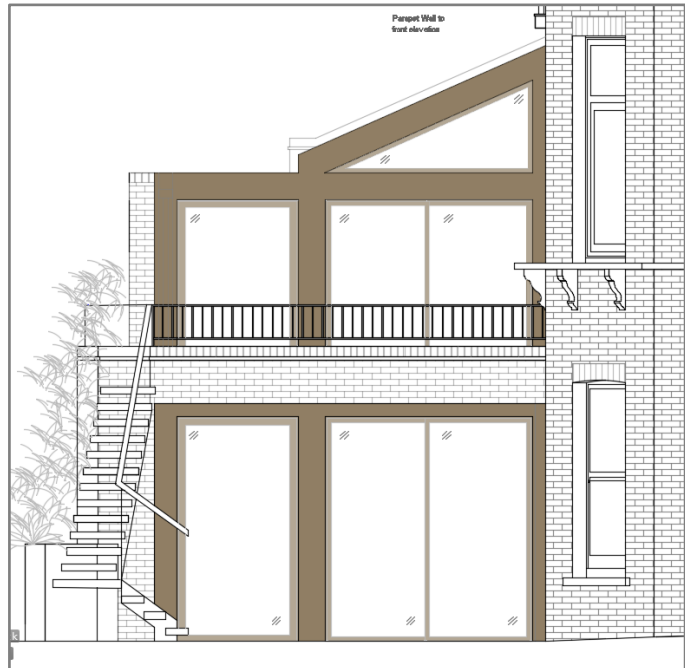


Figure 3 – Proposed rear elevation - NTS

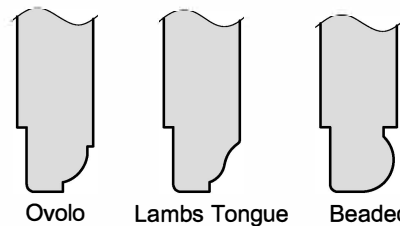
Conservation BOX SASH WINDOW

Standard Specification

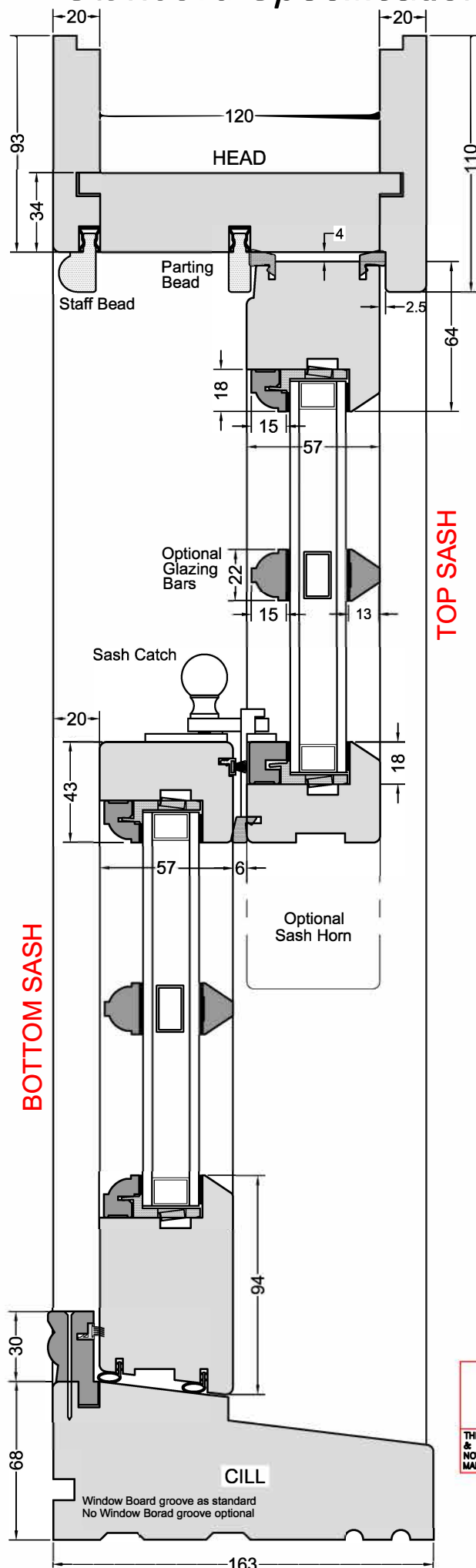
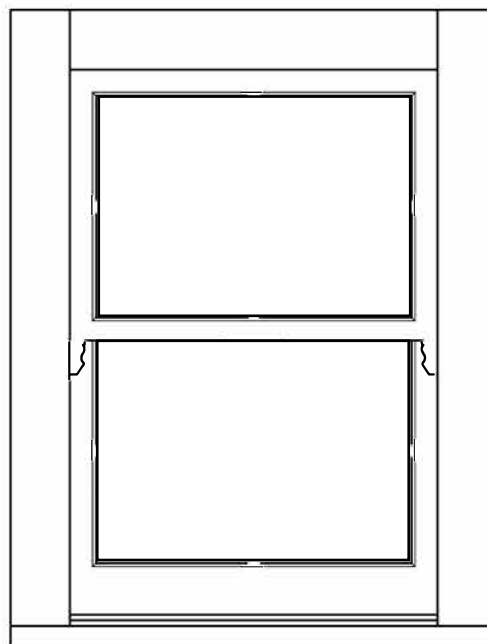
03/06/2019 REVISION A

FILE: BX4-01SX

Appendix A.1



External Liners can be SQUARE Profile as shown, OVOLO, LAMBS TONGUE or BEADED



SPECIFICATIONS

FRAME	110x160mm HEAD & JAMBS, 56,68 OR 92 x 163mm GILL 34, 44 or 68mm TRANSOM. 162 or 220mm MULLION
LINER PROFILE	SQUARE EDGE (shown) OVOLO, BEADED or LAMBS TONGUE
SASH	64 x 57mm TOP RAIL & STILES 94 x 57mm BOTTOM RAIL 43 x 57mm MEETING RAILS
SASH BEAD & BAR PROFILE	OVOLO (shown) LAMBS TONGUE or SQUARE EDGE. Optional Horn detail on Sash
CILL PROJECTION	Flush as shown, as standard Additional options: 35, 60, 85 or 110mm Extension
GLAZING	14mm Double glass unit comprising 4mm Tough / 6mm Krypton / 4mm Tough Planitherm one

HARDWARE/FITTINGS

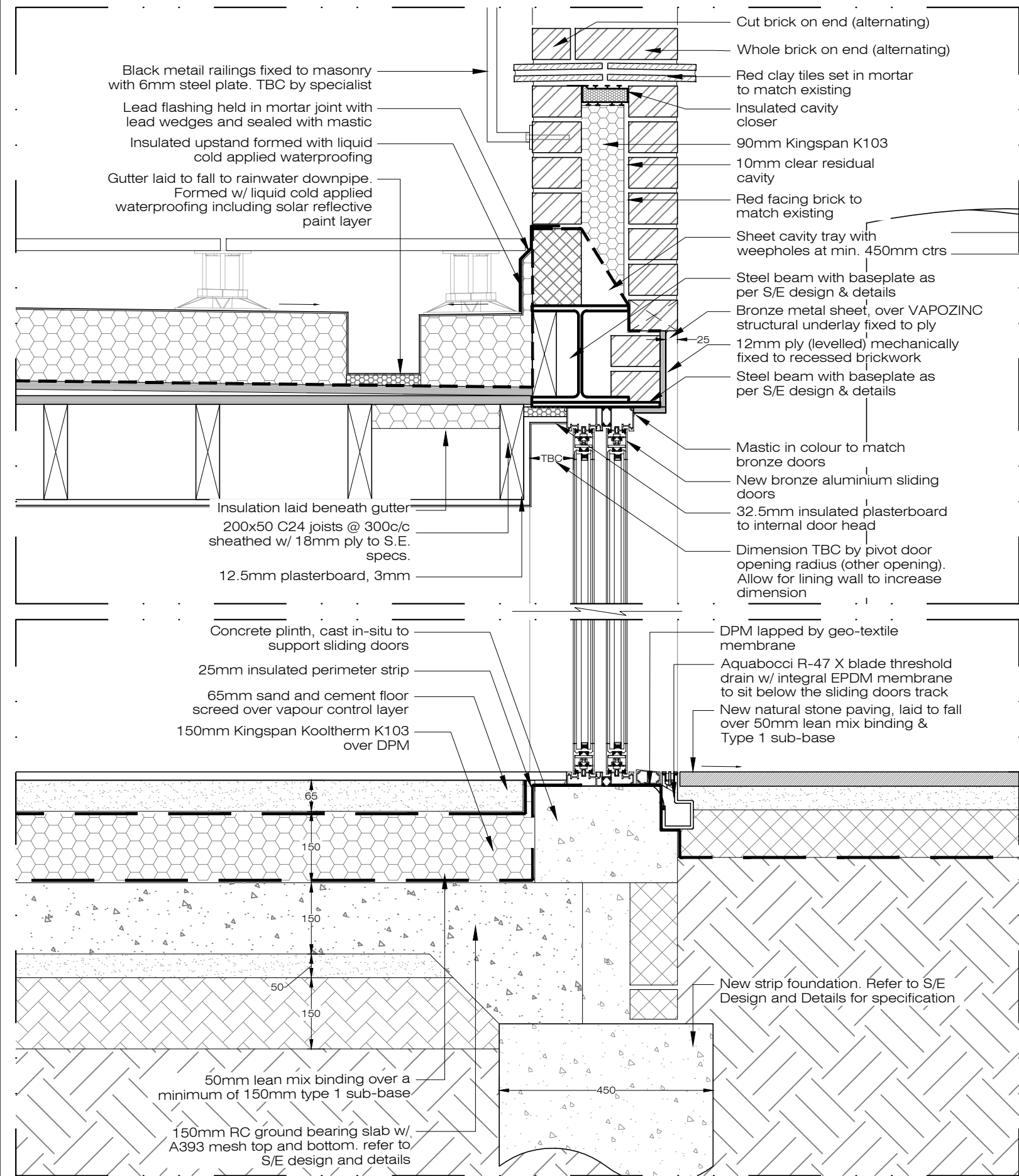
Security Sash catches, Sash Lifts, Sash Restrictors
and Barrel Security Locks
Polished Chrome, Satin Chrome or Brass finish.
Trickle Vents can be fitted to Head or Top Rail

**DUE TO PROGRESSIVE DEVELOPMENT
MUMFORD & WOOD LIMITED RESERVE
THE RIGHT TO MODIFY OR CHANGE
SPECIFICATIONS WITHOUT PRIOR NOTICE**

THIS DRAWING & SPECIFICATIONS ARE THE PROPERTY OF MUMFORD & WOOD Ltd. THEY ARE ISSUED IN STRICT CONFIDENCE AND SHALL NOT BE REPRODUCED, COPIED OR USED AS THE BASIS FOR MANUFACTURING WITHOUT WRITTEN PERMISSION.



TOWER BUSINESS PARK,
KELVEDON ROAD
TIPTREE, ESSEX
CO5 0LX
Tel: 01621 818155 FAX: 01621 818175
EMAIL: sales@mumfordwood.com
WEB: www.mumfordwood.com



DETAIL
LGF Extension Door Head, Threshold & Parapet Detail 1:10@A3

PLEASE NOTE:

- All dimensions to be checked on site before fabrication,
- Contractor to refer to engineers drawings before proceeding with works.
- All drawings and designs are covered by design right (intellectual property), and may not be distributed, copied or issued without written permission by the Architect.
- All design concepts are the sole property of the Architect and no adaptations, reproductions or copies may be made without written permission of the Architect.
- These drawings are subject to any variation required or recommendation by any statutory authority, or for the better carrying out of the works.
- Samples to be provided by contractor for XUL Architecture's approval.
- All finishes to XUL Architecture's satisfaction.
- All drawings to be approved by XUL Architecture prior to construction.

ADDITIONAL NOTE:

Issue key:

Information (I)

Planning (P)

Tender (T)

Construction (C)

As Built (B)

Project Address

Flat 2, 16 Lyndhurst Gardens, NW3 5NR

Issue For:

PLANNING

Scale 1:10@A3

PROPOSED

Rev. Date 12.02.25

LGF Door Threshold & Head Detail

Drawn HS

Dwg. No. AD-01

Rev.

T-00

Checked RH

Project Number

23184

XUL
ARCHITECTURE

Ground Floor Office
33 Belsize Lane
London NW3 5AS
Office: +44 (0) 207 431 9014
info@xularchitecture.co.uk
www.xularchitecture.co.uk