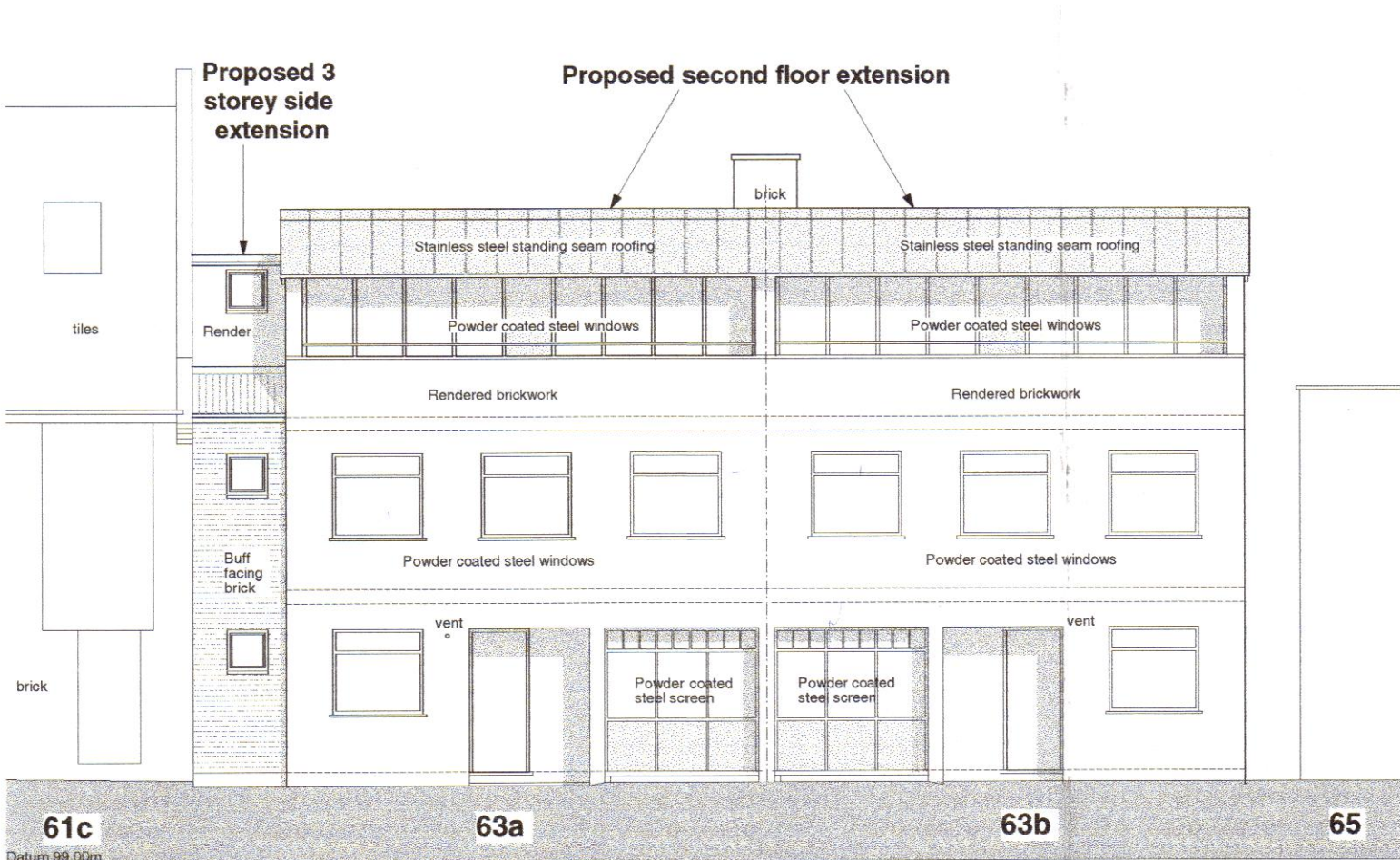
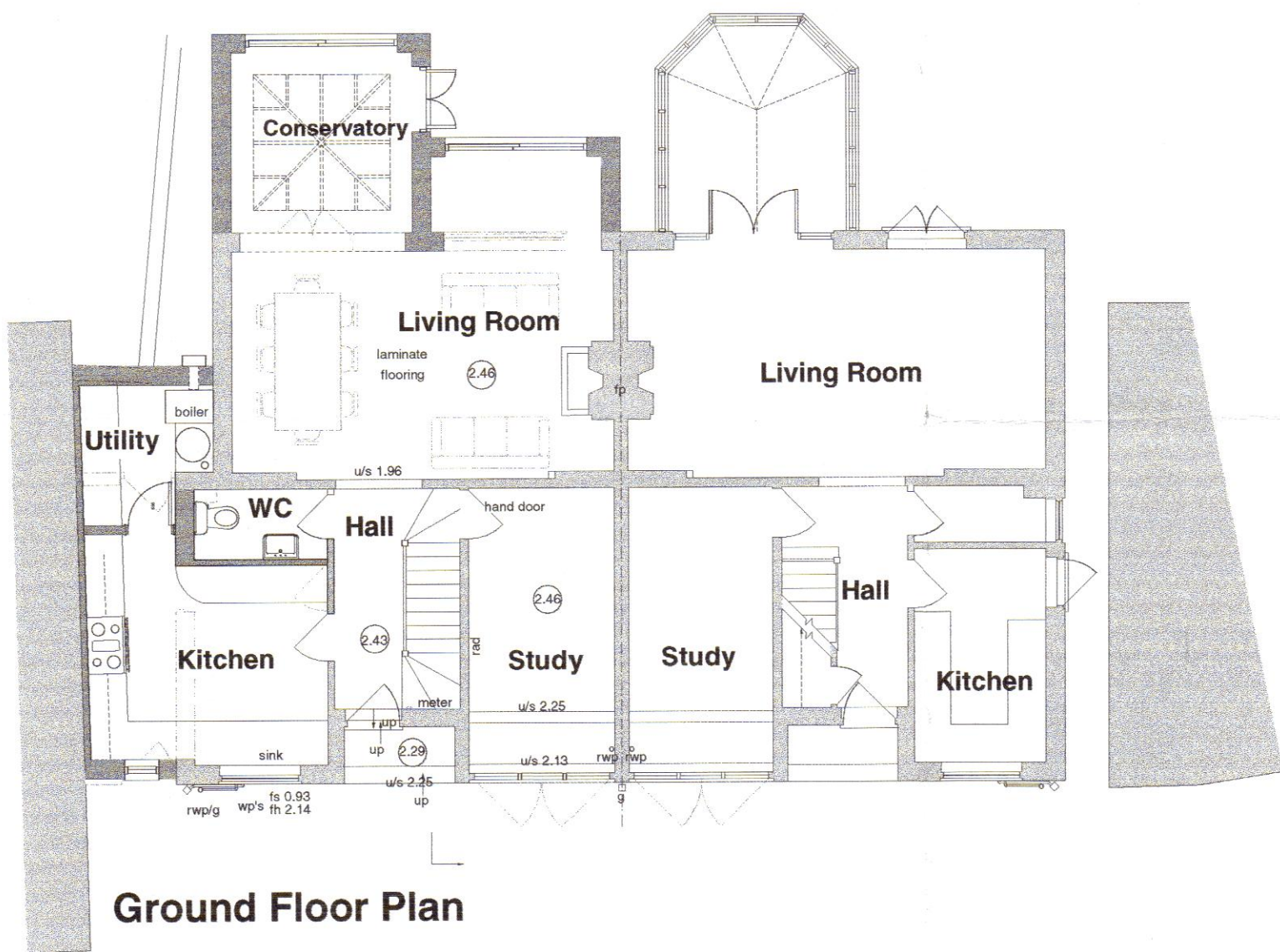
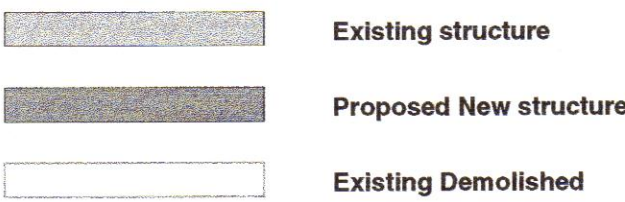


Proposed Alterations

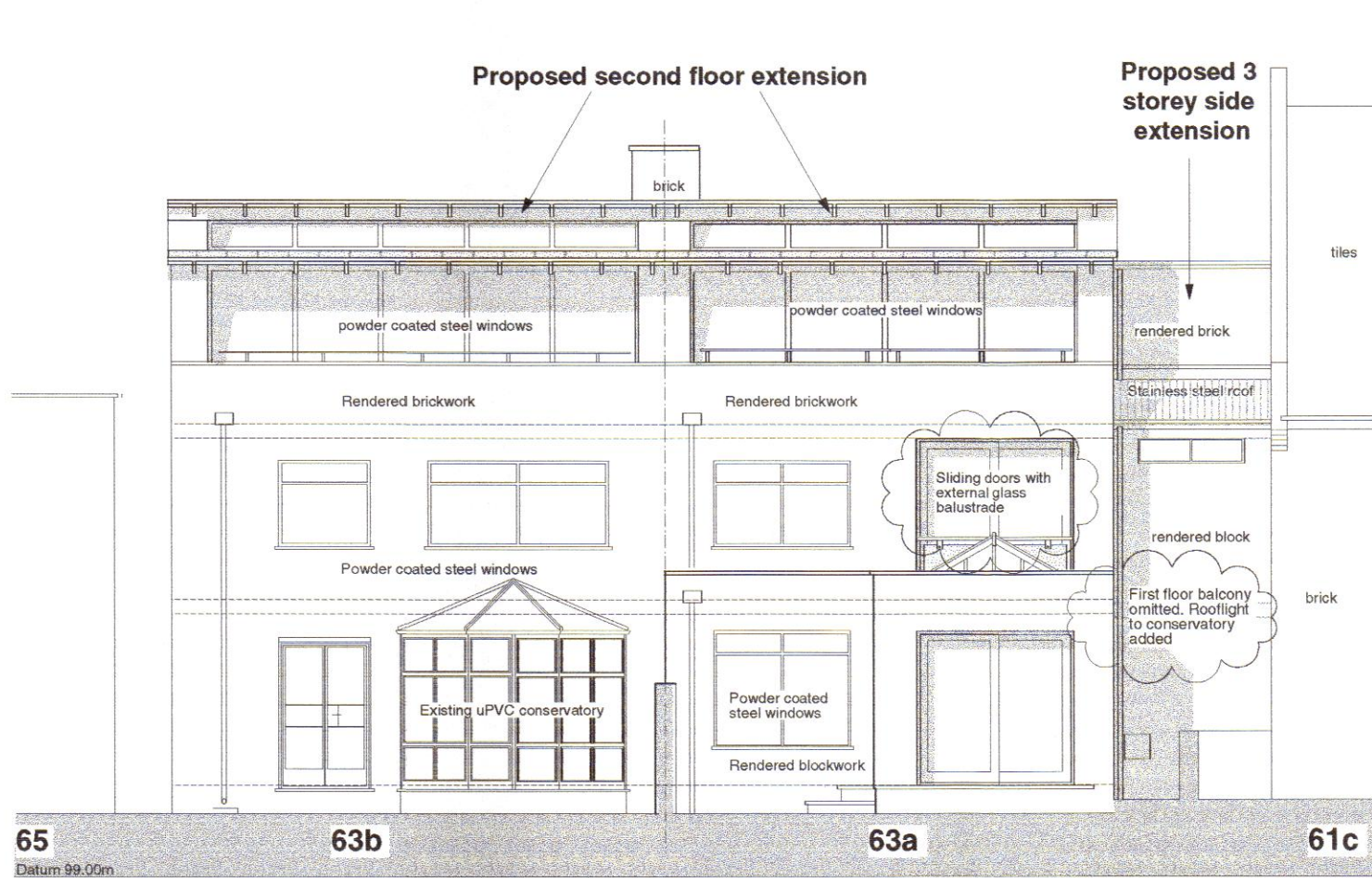


North West Elevation

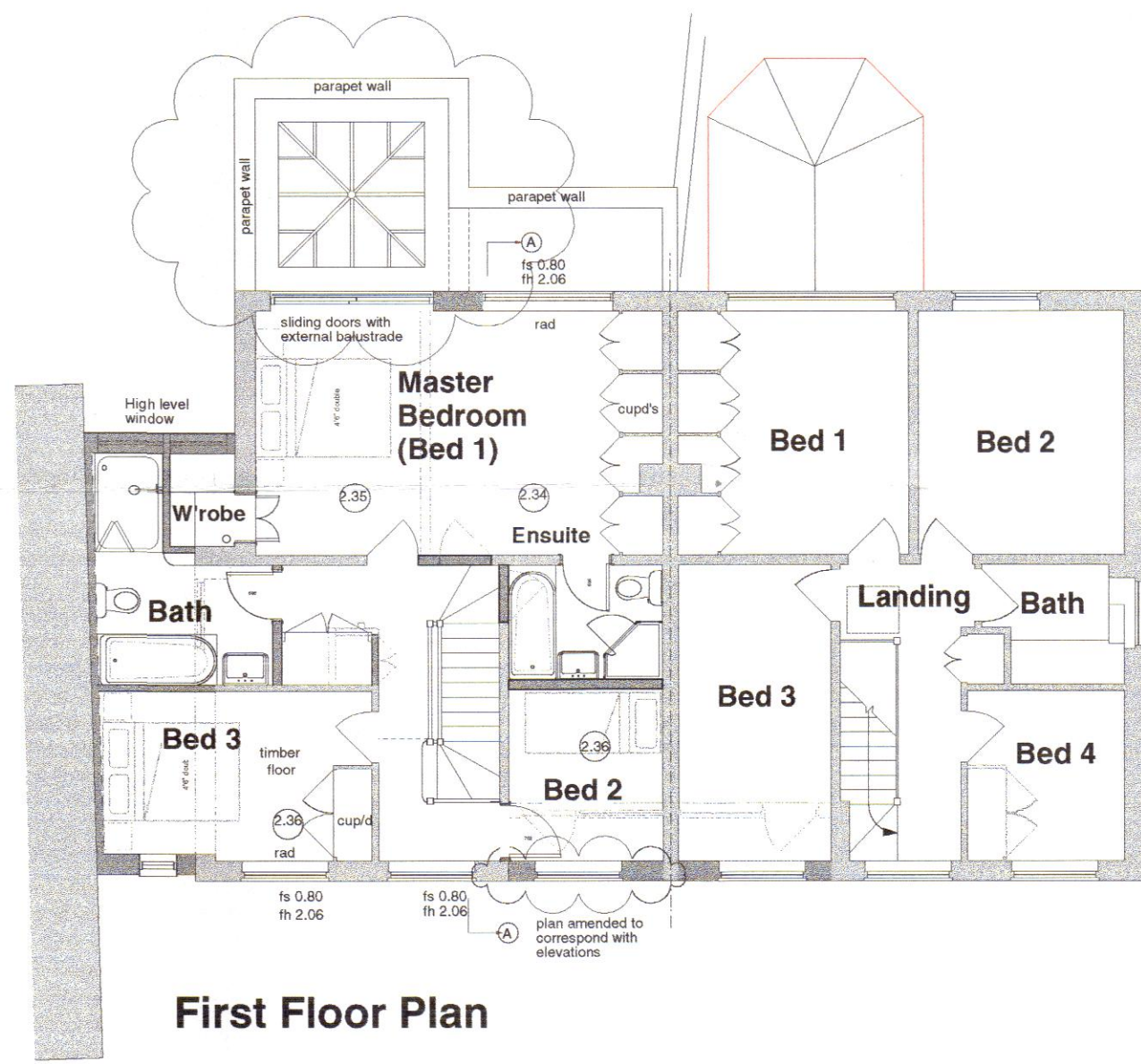
Structure Key



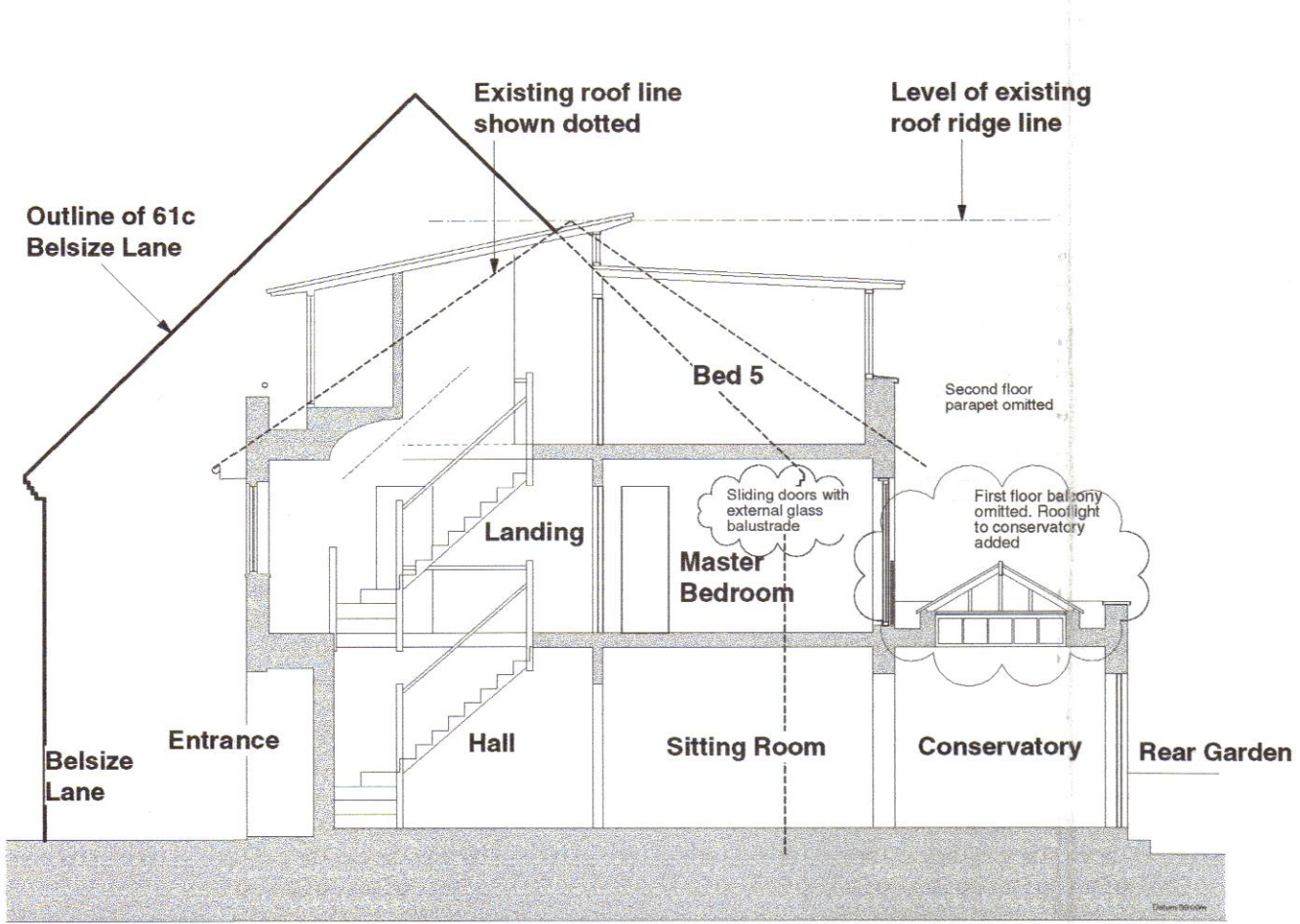
Ground Floor Plan



South East Elevation



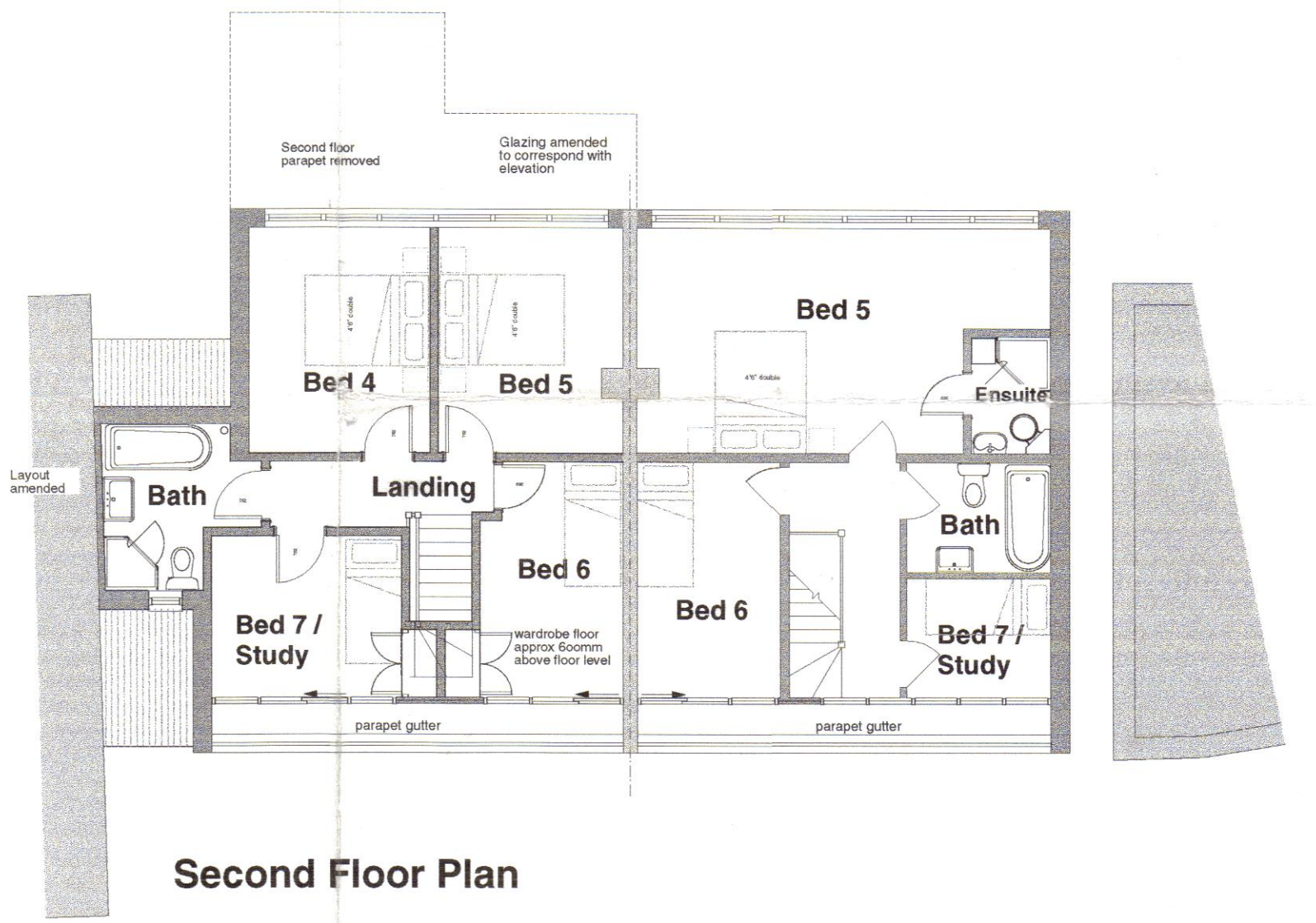
First Floor Plan



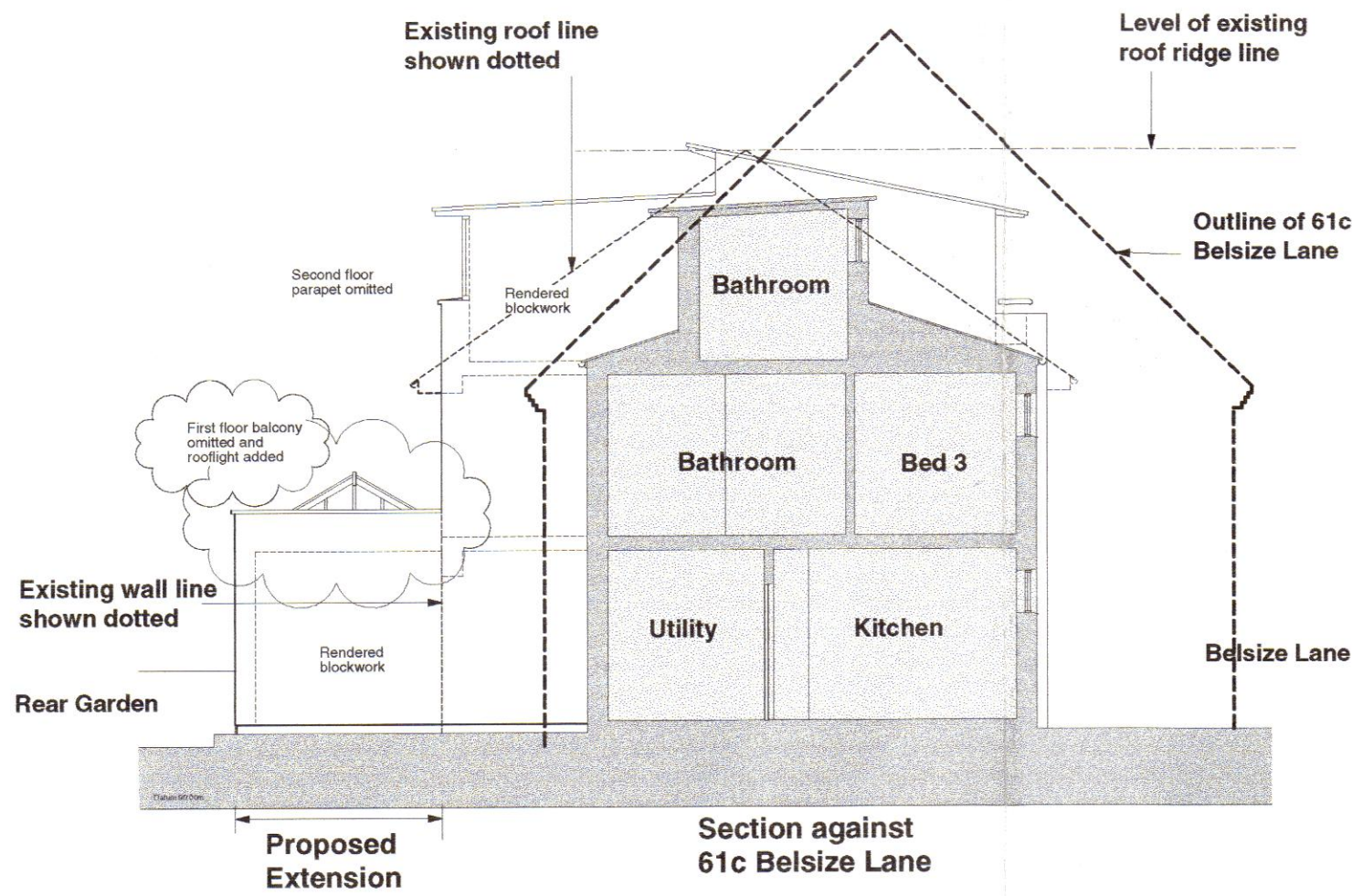
Section A-A



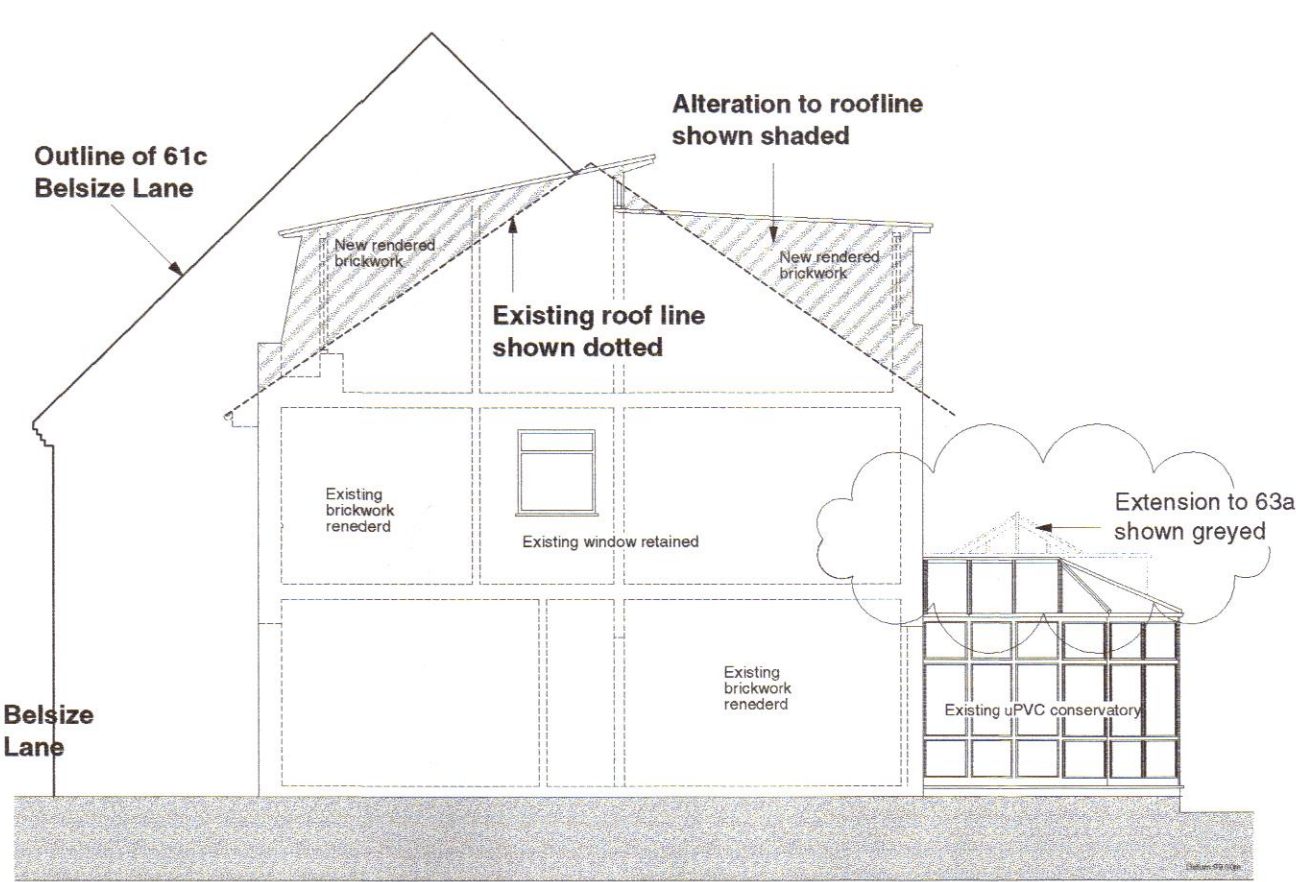
Block Plan 1:500



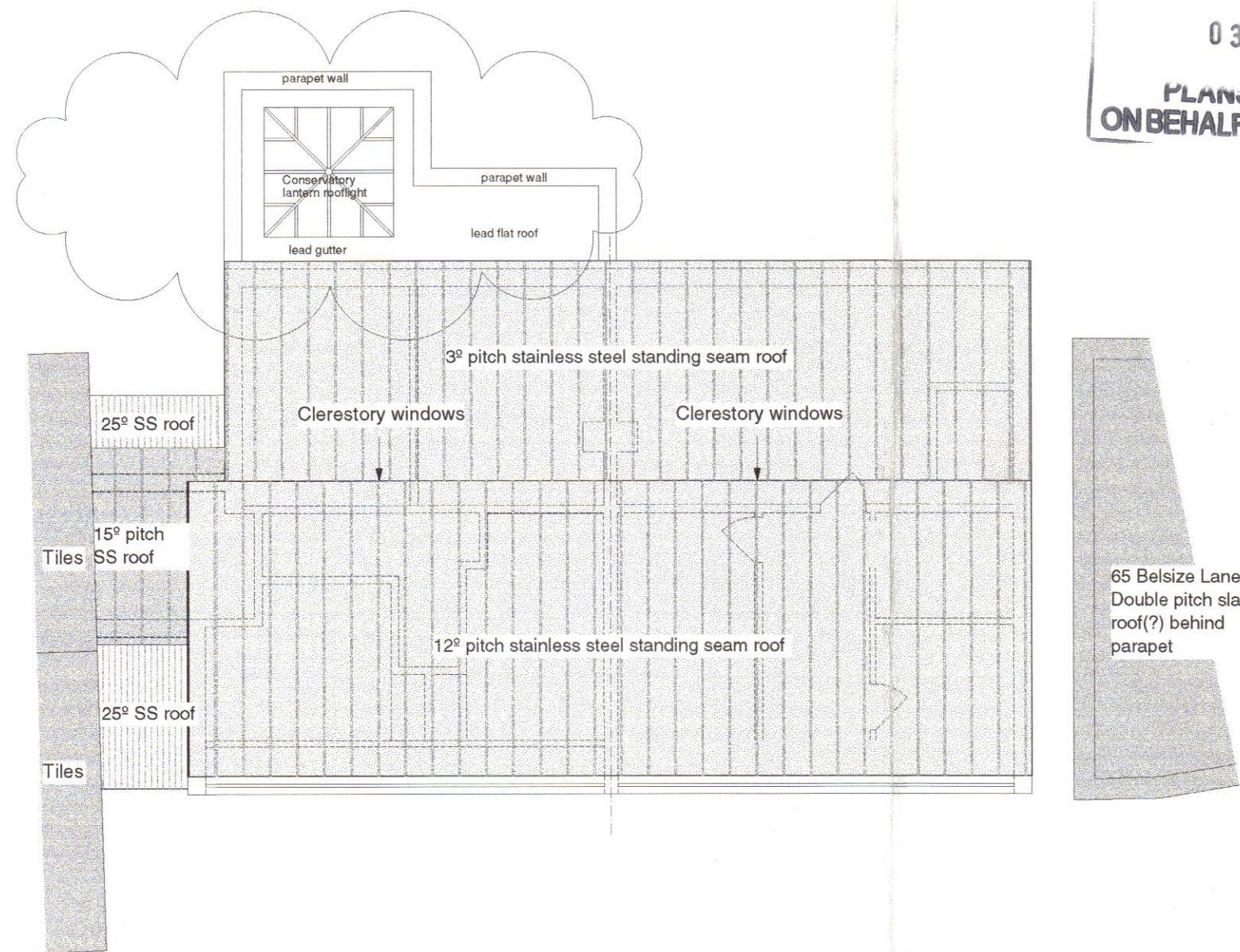
Second Floor Plan



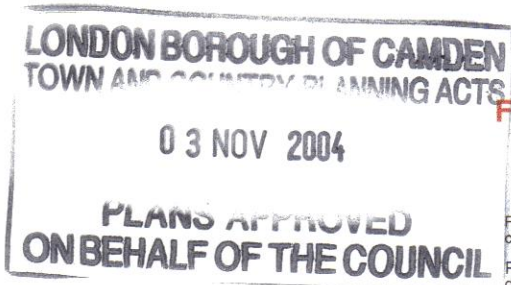
Side (North) Elevation
Against 61c Belsize Lane



Side (South) Elevation
(Section of 63b shown dotted)
Against 65 Belsize Lane



Roof Plan



3rd REVISED PLANNING
APPLICATION DRAWING
Following Planning Officer comments and emails

Rev D: Various changes to remove first floor rear balcony at Planning Officer request. See revision clouds. Amended planning drawing, 2nd November 2004.
Rev C: Various changes at Planning Officer request. See revision clouds. Amended planning drawing, 21st October 2004.
Rev B: Roofline pitch amended and elevations altered to suit. North & South elevations and roof plan added. Revised planning application drawing g issue, 7th September 2004.

JACKSON ASSOCIATES
ARCHITECTS & DESIGNERS

PROJECT NO. 500
Alterations and extensions to 63a and 63b, Belsize Lane, London, NW3 5AU

DRAWING TITLE: Proposed Plans & Elevations
SCALE: 1:100

DRAWING NO. 100
REVISION (D)
DATE August 2004

Jason Jackson. ARB. BA (Hons) Arch Dip (Arch) Dip (Urban Design)
Tithe House, Thurlbear, Nr Taunton, Somerset, TA3 5BW
Tel: 01823 443742 Fax: 01823 443856 Mobile: 07973 217620
e-mail: jacksons@netcomuk.co.uk