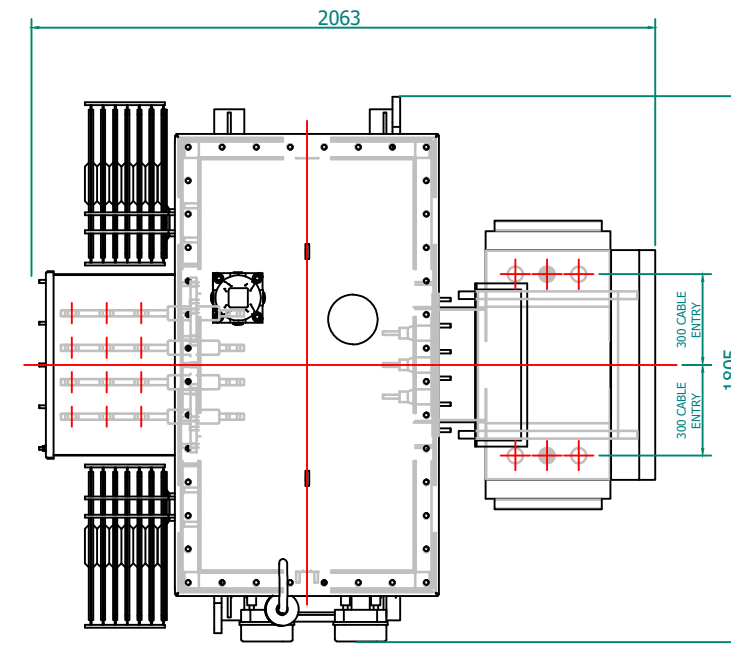
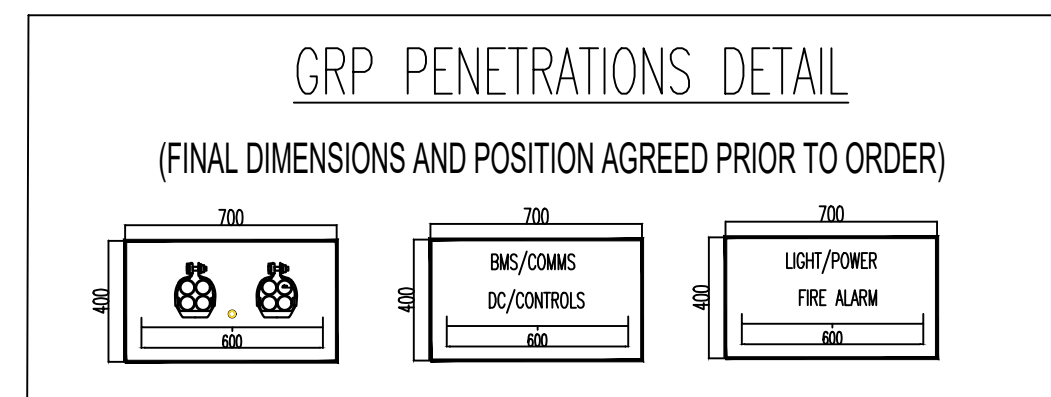
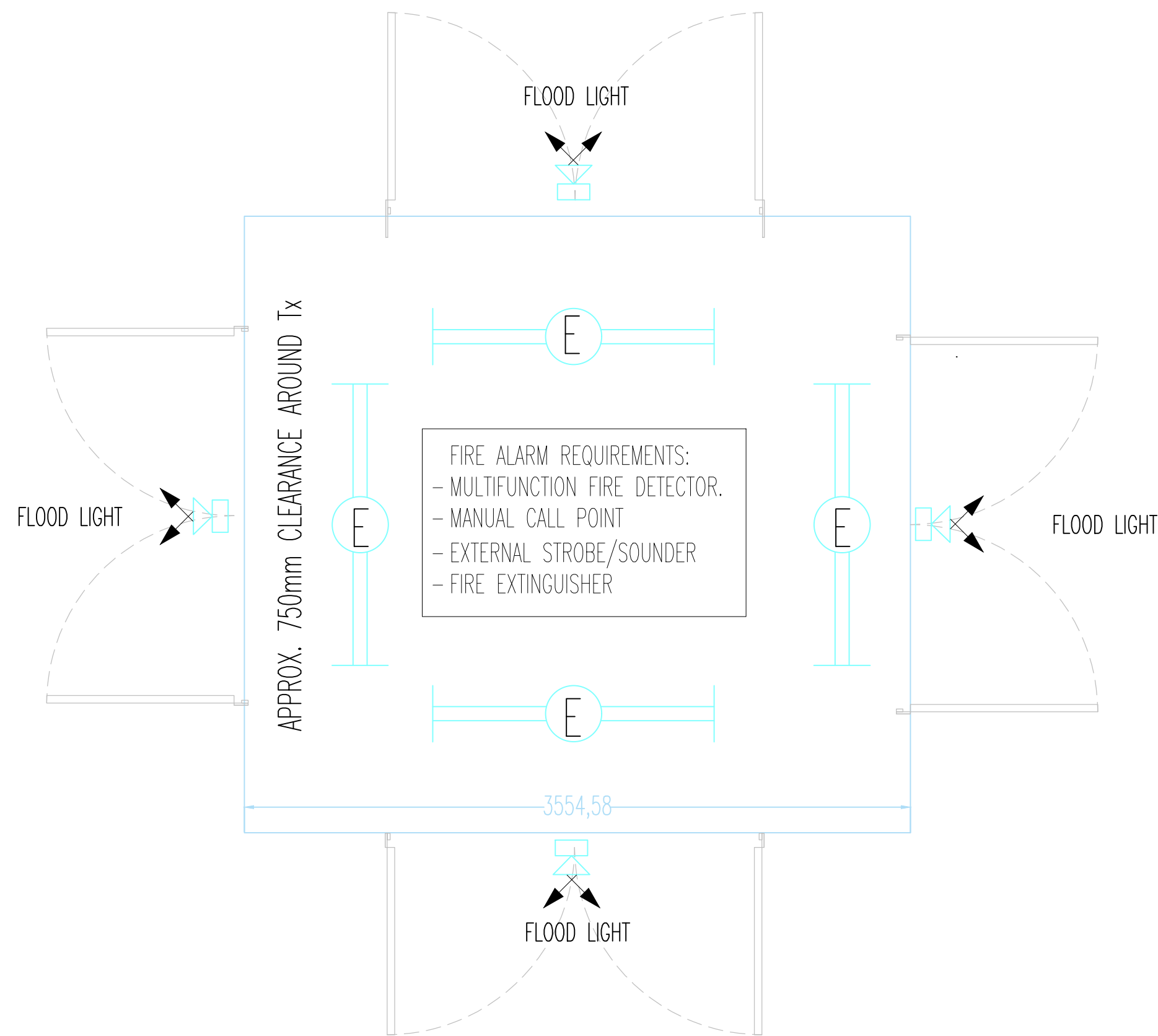


# INDICATIVE TRANSFORMER GRP DETAIL



## NOTE\*

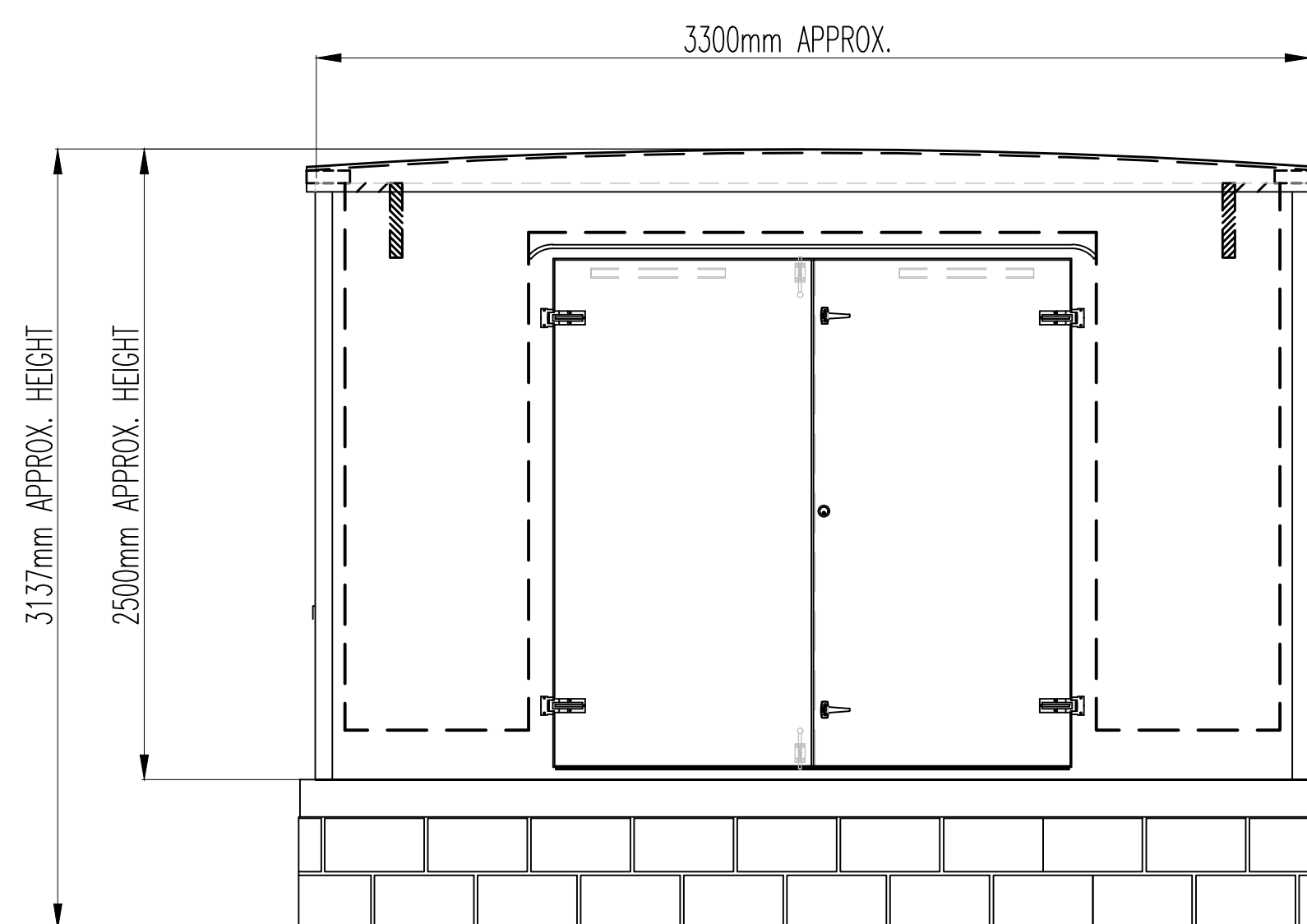
- STRUCTURAL ELEMENTS ARE INDICATIVE,
- CONTRACTOR TO REFER TO FULL TENDER PACKAGE INC STRUCTURAL ENGINEERS DRAWINGS/SPECIFICATION.
- LUMINARIES WILL REDUCE THE CLEAR INTERNAL HEIGHT OF THE BUILDING BY APPROX. 150mm
- FINAL POSITIONING TO BE AGREED.

## NEW GRP DETAIL

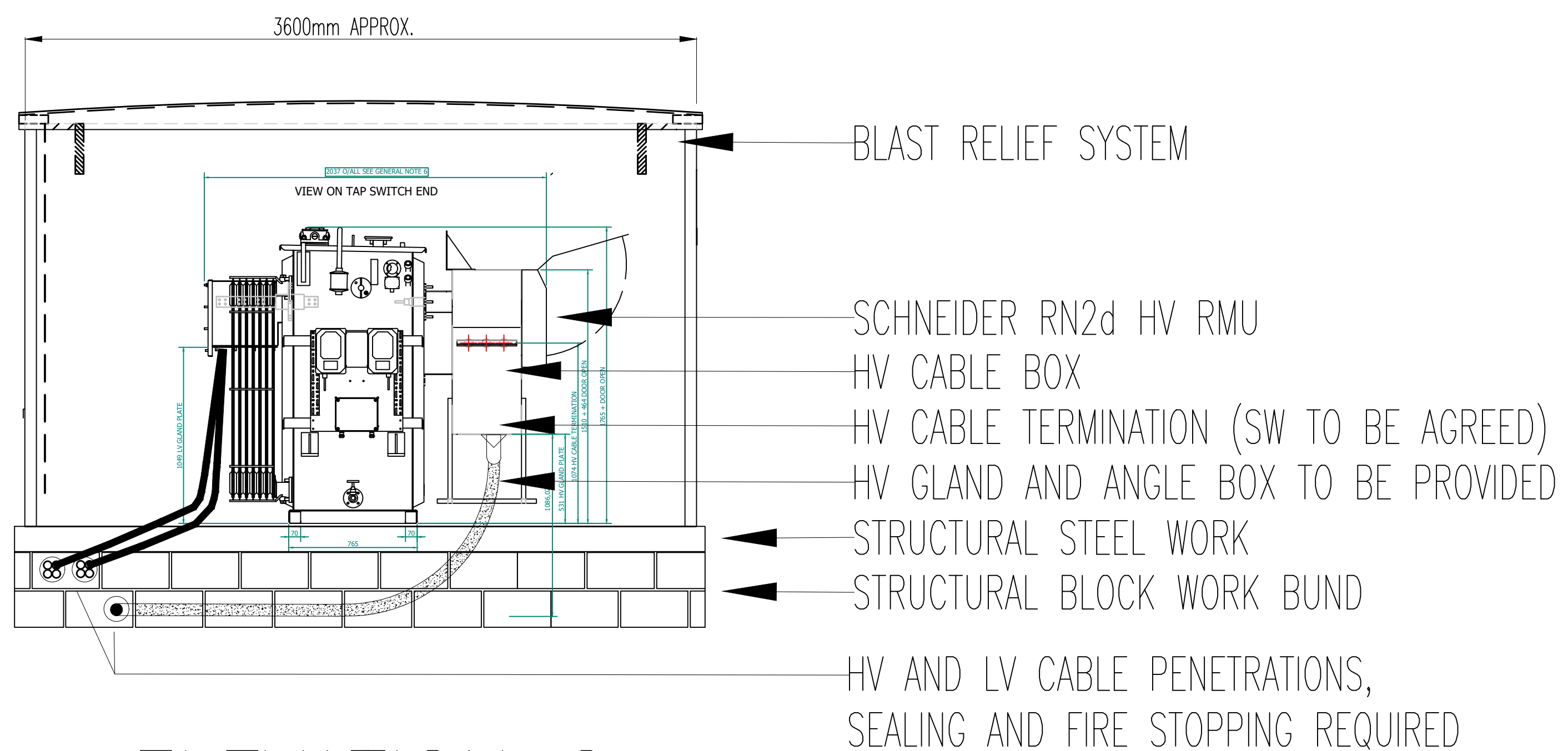
(REFER TO SPECIFICATION FOR FURTHER DETAILS)

### GRP TO BE COMPLETE WITH :

- OPENINGS FOR CABLE ENTRIES
- BLAST RELIEF SYSTEM,
- VENTILATION LOUVERS,
- DOORS (ON EACH SIDE)
- OPEN BASE GRP
- GRP FLOOR TO BE GRP GRATED TYPE - (BY MAIN CONTRACTOR)
- COLOUR TO BE CONFIRMED SUBJECT TO PLANNING APPROVAL
- INTERNAL LIGHTING AND POWER - (BY MAIN CONTRACTOR),
- EXTERNAL LED LIGHTING (VIA PIR) - (BY MAIN CONTRACTOR)
- INTERNAL EM LED LIGHTING - (BY MAIN CONTRACTOR)
- 230v HEATER AND THERMOSTAT (BY MAIN CONTRACTOR)
- FIRE EXTINGUISHER, (BY MAIN CONTRACTOR)
- FIRE ALARM, (BY MAIN CONTRACTOR)
- TELEPHONE, (BY MAIN CONTRACTOR)
- BUND TO HOLD FULL CONTENTS OF TRANSFORMER FLUID
- PENETRATIONS TO BE FIRE SEALED AND NOT IMPAIR BUND INTEGRITY
- FLEXIBLE DUCTS TO BE USED FOR CABLE ROUTE ABOVE THE HEIGHT OF BLOCK BUND
- CABLE BENDING RADIUS TO BE IN ACCORDANCE WITH MANUFACTURES GUIDELINES



ELEVATION 1



ELEVATION 2