

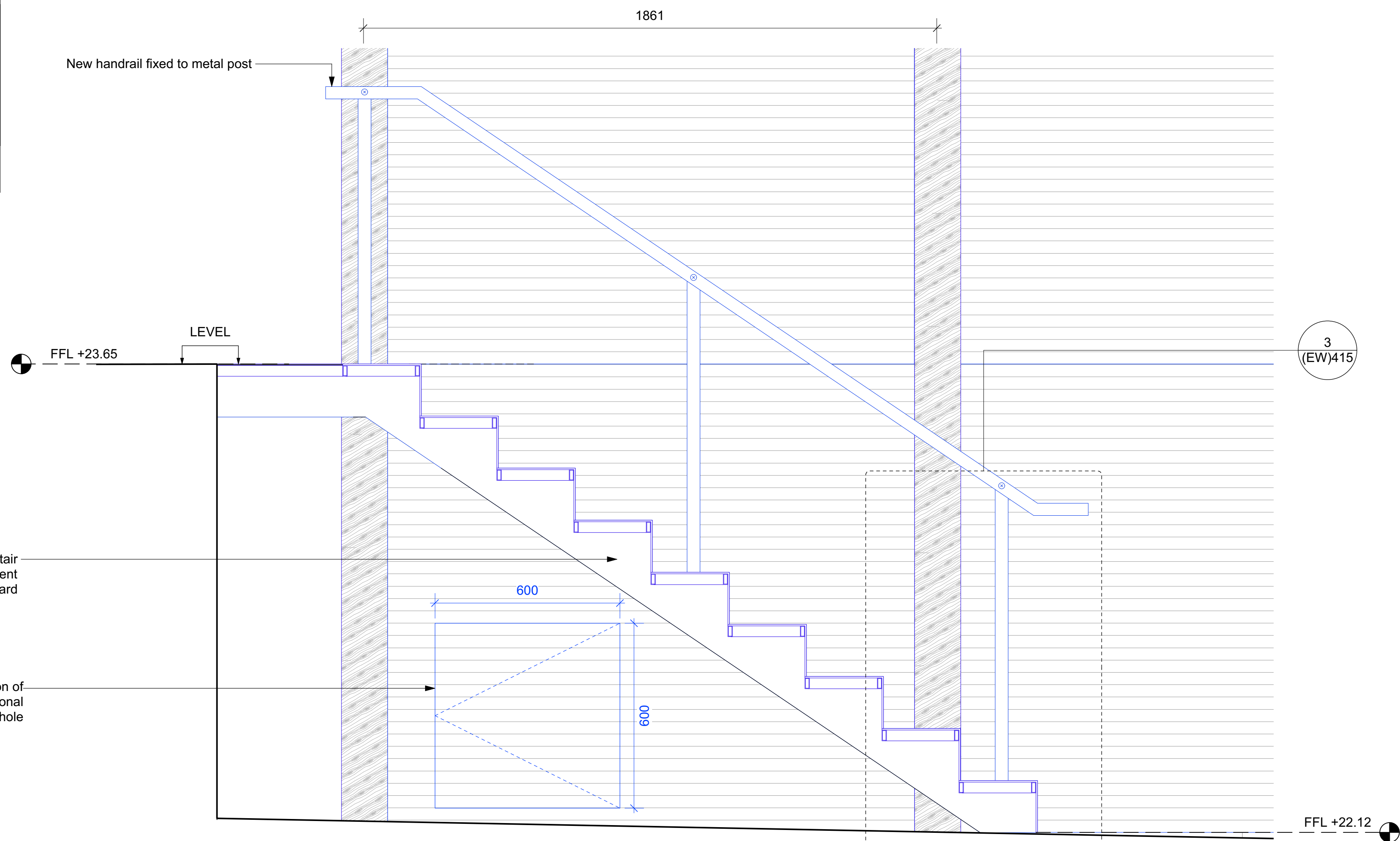
CONSTRUCTION

KEY

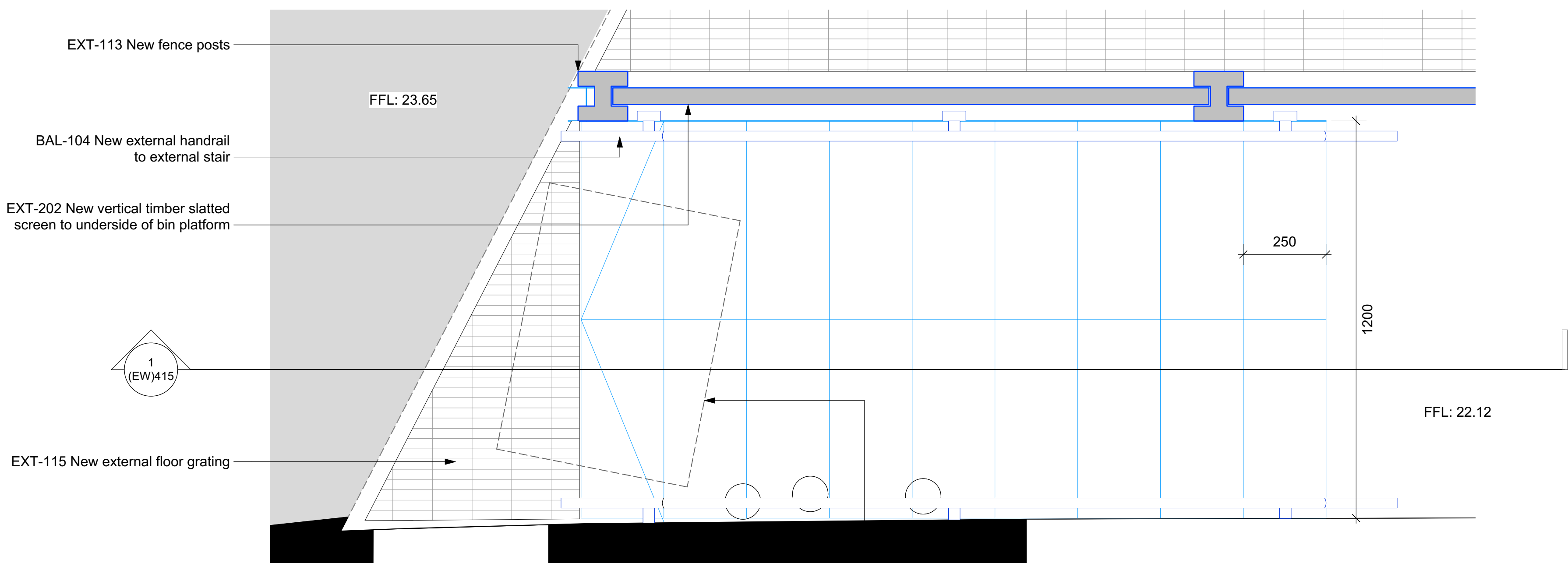
Existing structure, walls & other building fabric to be retained, made good and redecorated, unless otherwise noted

New structure & walls

New building elements

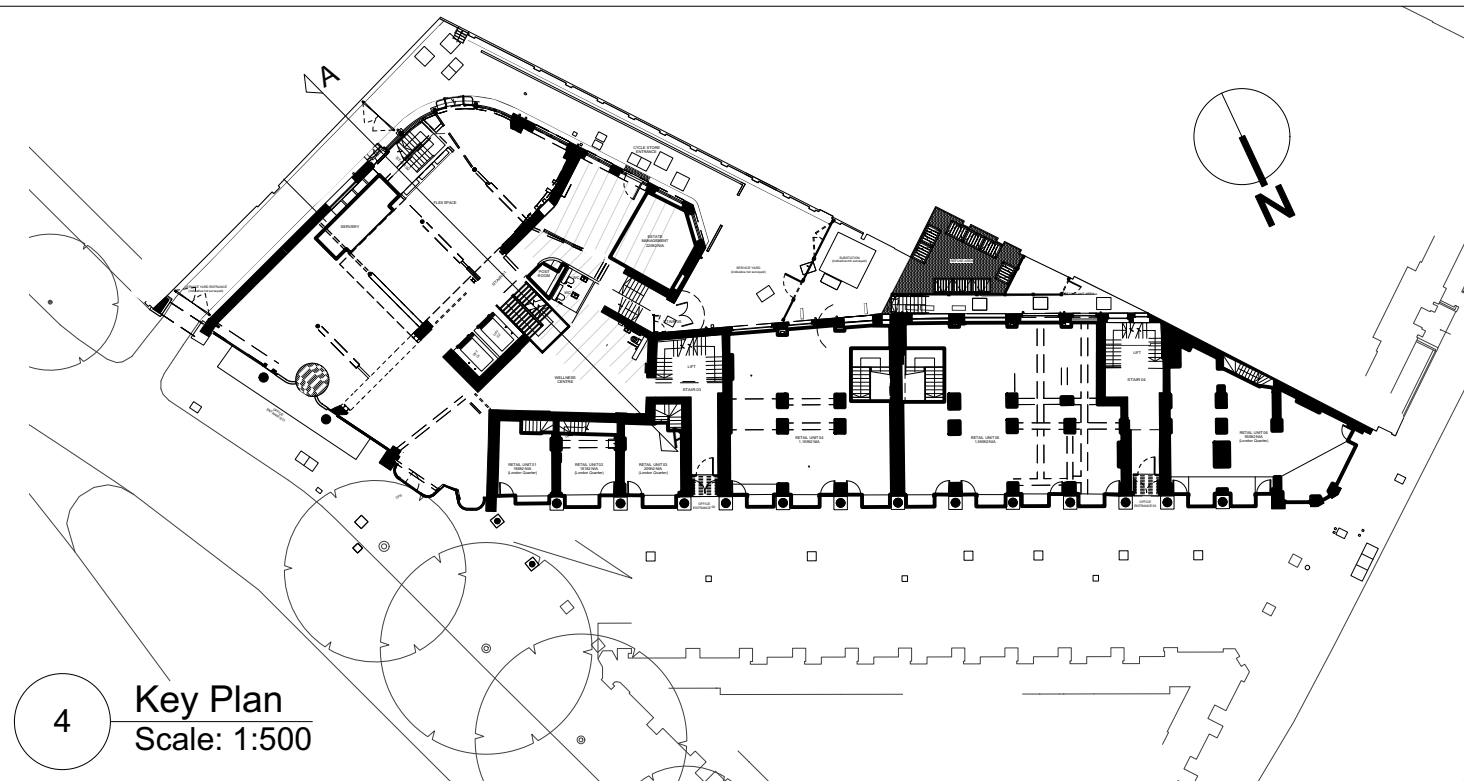


1 Vernon / Sicilian - External Stairs - Proposed Section
Scale: 1:10

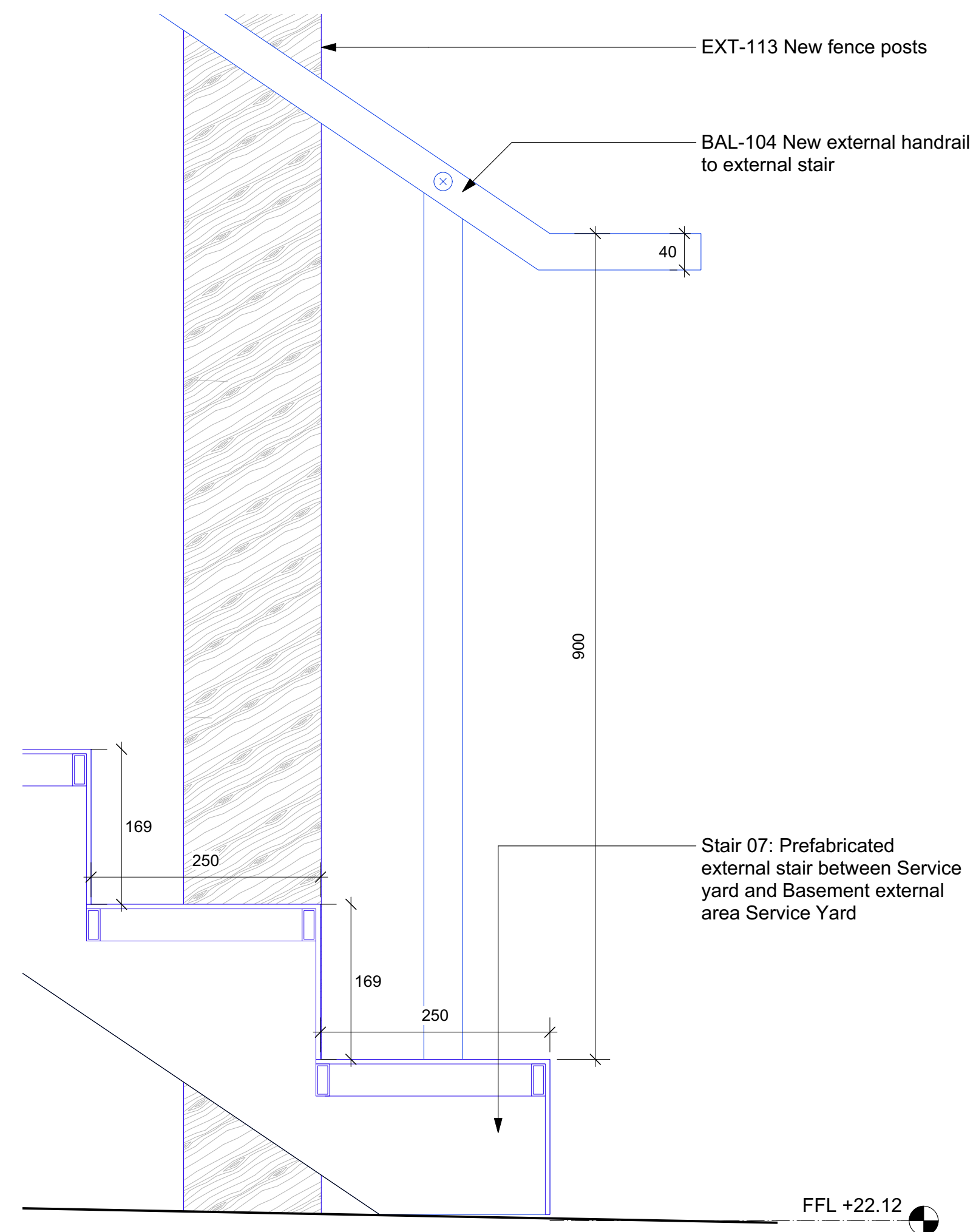


2 Vernon / Sicilian - External Stairs - Proposed Plan
Scale: 1:10

Existing manhole cover to low level below proposed stair



Key Plan
Scale: 1:500



Vernon / Sicilian - External Stairs - Tread Detail
Scale: 1:5

<p>All dimensions to be checked on site prior to commencement of any works, and/or preparation of any shop drawings.</p> <p>Sizes of and dimensions to any structural or services elements are indicative only. See structural and service engineers drawings for actual sizes / dimensions.</p> <p>This drawing to be read in conjunction with all other Architect's drawings, specifications and other Consultants' information.</p> <p>All proprietary systems shown on this drawing are to be installed strictly in accordance with the Manufacturer/Suppliers recommended details.</p> <p>Any discrepancies between information shown on this drawing and any other contract information or manufacturer/suppliers recommendations is to be brought to the attention of the Architect.</p>	Revision	Date	Amendment	<div><div>Date</div><div>January 2021</div></div> <div><div>Scale</div><div>Varies</div></div> <div><div>Drawn</div><div>JM</div></div> <div><div>Check</div><div>AY</div></div> <div><div>Title</div><div>Ver/ Sic - Proposed External Steps Details</div></div> <div><div>Status</div><div>CONSTRUCTION</div></div> <div><div>Client Ref</div><div>HP</div></div> <div><div>Drwg. no.</div><div>383 (EW) 415</div></div> <div><div>Rev.</div><div>C1</div></div> <div><div>Hale Brown Architects Ltd.</div><div>Unit 1.04, Edinburgh House, 170 Kennington Lane, London, SE11 5DP</div></div> <div><div>T: 020 3735 7442</div><div>E: mail@halebrown.com</div></div> <div><div>W: www.halebrown.com</div></div>
	C1	07/02/2024	Construction issue	

halebrown

architects