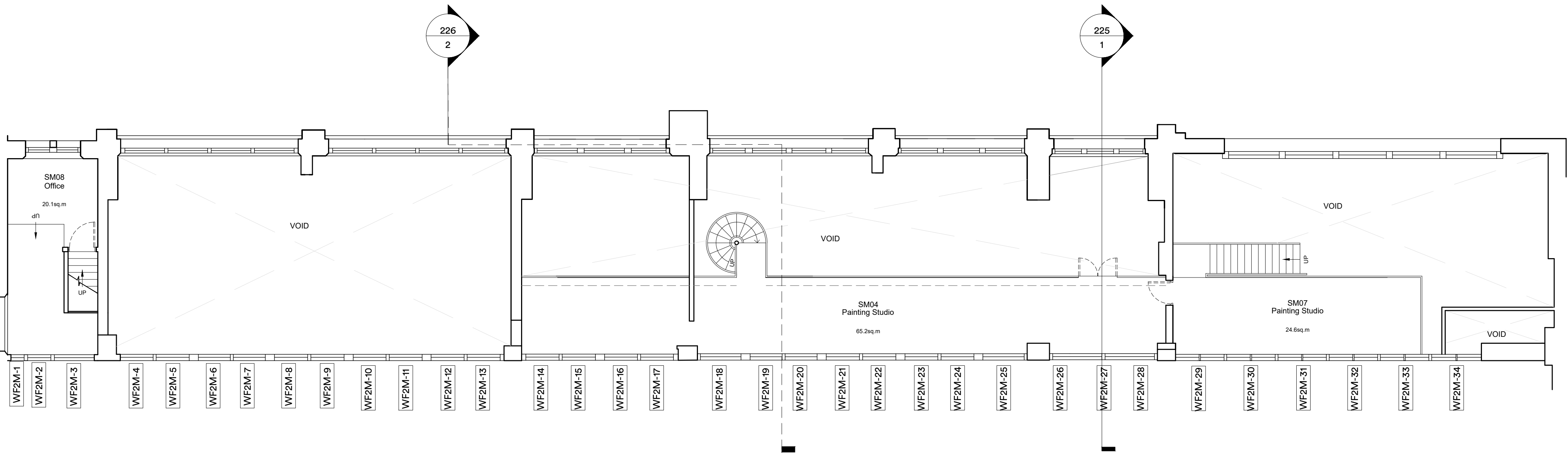


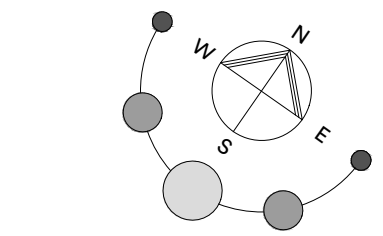
Second Floor Plan  
As Proposed

1:100



Second Mezzanine Plan  
As Proposed

1:100



Legend

- New riser enclosure with first fix framing to clause G20, molded paneling to clause Z10 and associated trims to clause P20. Nominal allowances for Fire-stopping to clause P12 and screed repairs to clause M10
- Provisional works: New riser enclosure with first fix framing to clause G20, molded paneling to clause Z10 and associated trims to clause P20. Nominal allowances for Fire-stopping to clause P12 and screed repairs to clause M10
- Refer to drawing 4682-FBR-A1-02-DR-A-245 for internal fabric reinstatement works

Please refer to BDP drawings

P.01 Issued for Planning		06.01.25	ck	rc
rev.	description	date	drawn	checked
client :				

UCL

project :

The Slade School of Fine Art  
Gower St London WC1E 6BT  
External Repairs

drawing title :

Second Floor Plan and Mezzanine  
As Proposed (Fabric Reinstatement-Risers)

FulkersBaileyRussell	
London   Basingstoke   Brighton   Bristol   Cardiff   Kings Hill   Manchester	
info@fulkers.co.uk // www.fulkers.co.uk // 020 3735 5792	
proj no : 24 4682	scale: 1:100 @A1
identifier : 4682-FBR-A1-02-DR-A-208	
status: S2 (For Information)	rev no: P01

