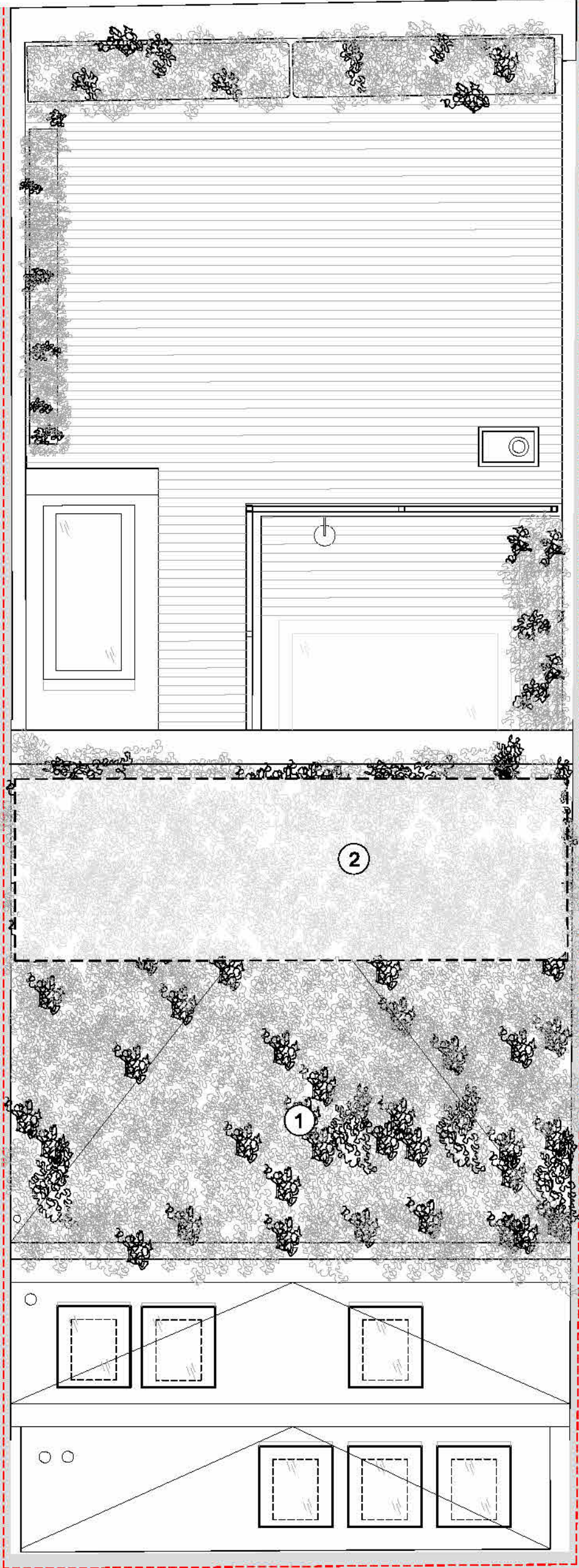


King's Mews



01	12/02/25	FOR TENDER	Stage 4 Tender Package Submission	JG	LC
Rev	Date	Status	Description	Drawn	Approved

1. This drawing remains copyright of Sabbadin Corti Ltd and may not be reproduced or copied without consent in writing.
2. Do not scale drawing use figured dimensions only. Drawing errors and omissions to be reported to the architect.
3. All dimensions to be checked on site by the contractor and such dimensions to be their responsibility.
4. Read in conjunction with all relevant structural and mechanical & electrical engineers drawings.
5. All work must comply with relevant British Standards and Building Regulations requirements.