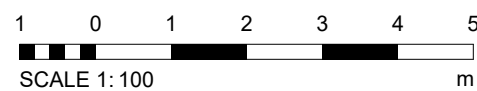


1 Planning Elevation - Block A Courtyard
1 : 100



ROOF B
04_Fourth Floor FFL
+80.100

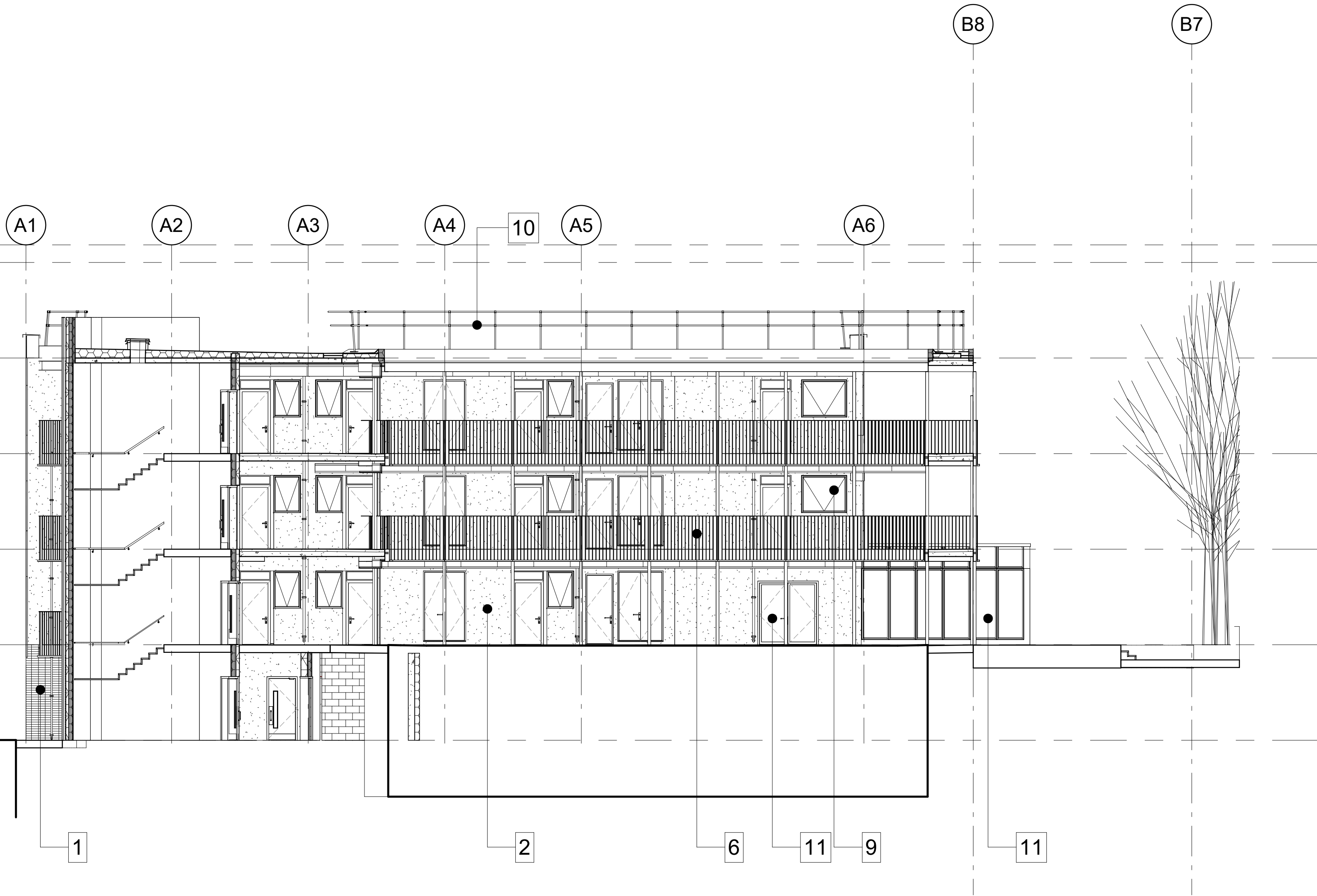
03_Third Floor FFL
+76.950

02_Second Floor FFL
+73.800

01_First Floor FFL
+70.650

00_Ground Floor FFL
+67.500

LG_Lower Ground Floor FFL
+64.350



Elevation Legend

- 1 Facing Brickwork
Manufacturer: Wienerberger
Reference: K20165p Staffordshire
Smooth Blue Facing Brick
Colour: Blue Perforated
Pattern: Stack Bond
Mortar: CEMEX - colour to match
PAREX Historical KL EA257 Dark Grey
25_13_50_51
- 2 Render System - Wetherby 4S
Silicone 1.5mm 'k'
Colour: STO B71 85 10
Finish: roughness level 3.0
25_45_72_28
- 3 Cladding Profile Type A:
Manufacturer: Argeton
Ref: Sample 02872.00 / CSGG136
Colour: to match RAL 130-50-30
Finish: Single Glaze
(colour sample only)
Argeton Rainscreen Cladding:
tile Profile A 25_20_70_25
- 4 Cladding Profile Type B:
Manufacturer: Argeton
Ref: Sample 02872.00 / CSGG136
Colour: to match RAL 130-50-30
Finish: Single Glaze
(colour sample only)
Argeton Rainscreen Cladding:
tile Profile B 25_20_70_25
- 5 Perforated Vertical Metal
Rainscreen Cladding to stairs
Colour: RAL 1035
- 6 Balustrade: RAL 9003
- 7 Walkways floor finish: porcelain
tile Manufacturer: Parkside
Architectural Tiles Range: Elvert
Sand 5770
Colour: "Sand"
- 8 Louvred Metal Door
Colour: RAL 1035
- 9 Windows
Colour: RAL 1035
- 10 Roof balustrade - galvanised
steel
- 11 KAWNEER AA100 curtain wall
and door
Colour: RAL 1035
- 12 Acoustic plant screen. Colour:
RAL1035

PL1	06-02-2025	TP	TE	Planning Issue
REV	DATE	BY	CHECKED	NOTE

STATUS SUITABILITY DESCRIPTION
S3 SUITABLE FOR REVIEW AND COMMENT

Watkins Gray International LLP
Colechurch House, 1 London Bridge Walk, London SE1 2SX, United Kingdom
t: +44 (0)20 7940 8400

Camden Hostels Project - Chester Road Site,
2 Chester Road, London N19 5BP

Planning Elevation - Block A Courtyard

SIZE	SCALE	DRAWN BY		CHECKED BY		FIRST ISSUE DATE		
A1	As indicated	AA		TP		07/02/25		
Project Number		Originator	Zone	Level	Type	Role	Number	Revision
123007		WGI	CH	ZZ	DR	A	4025	PL1