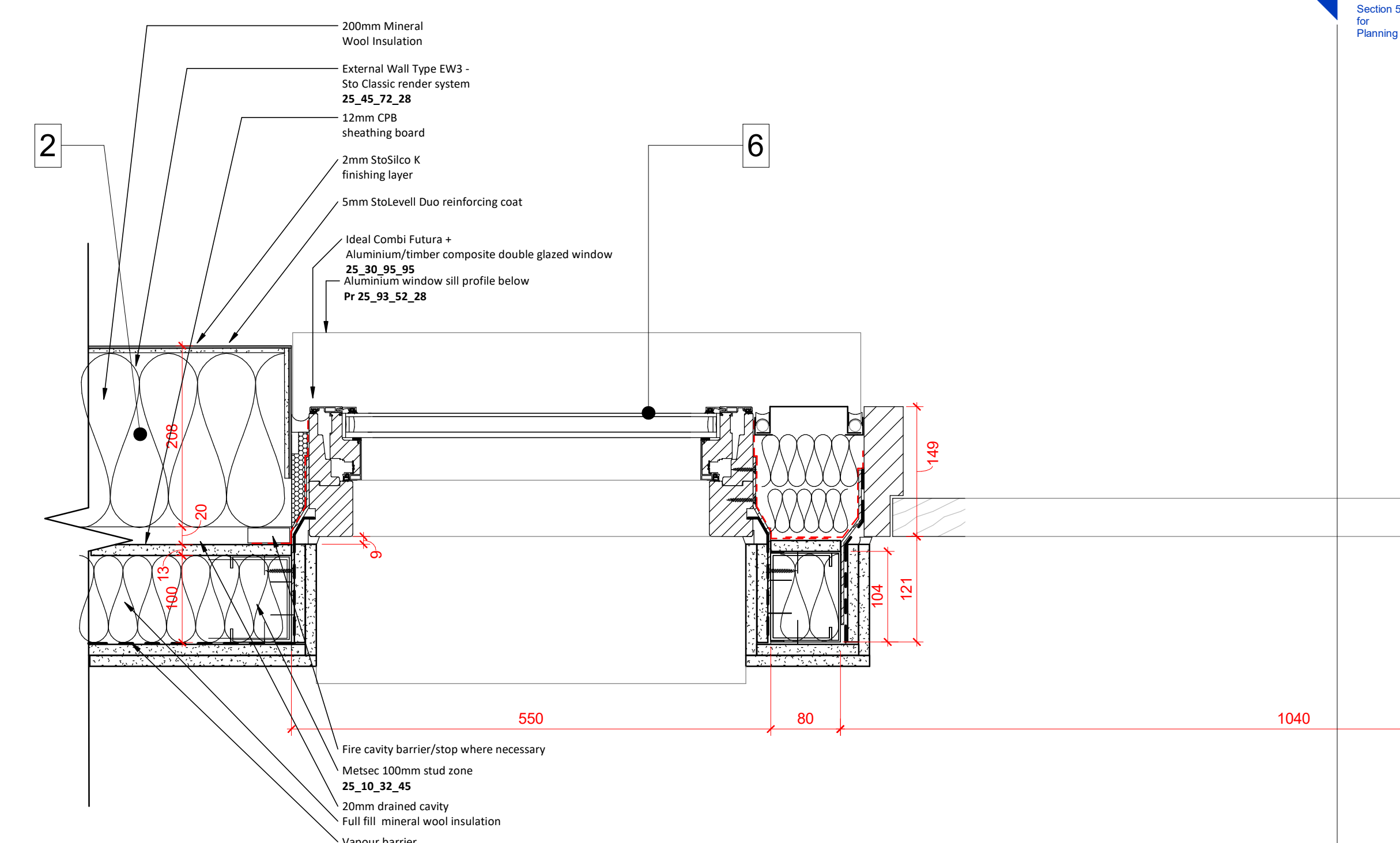
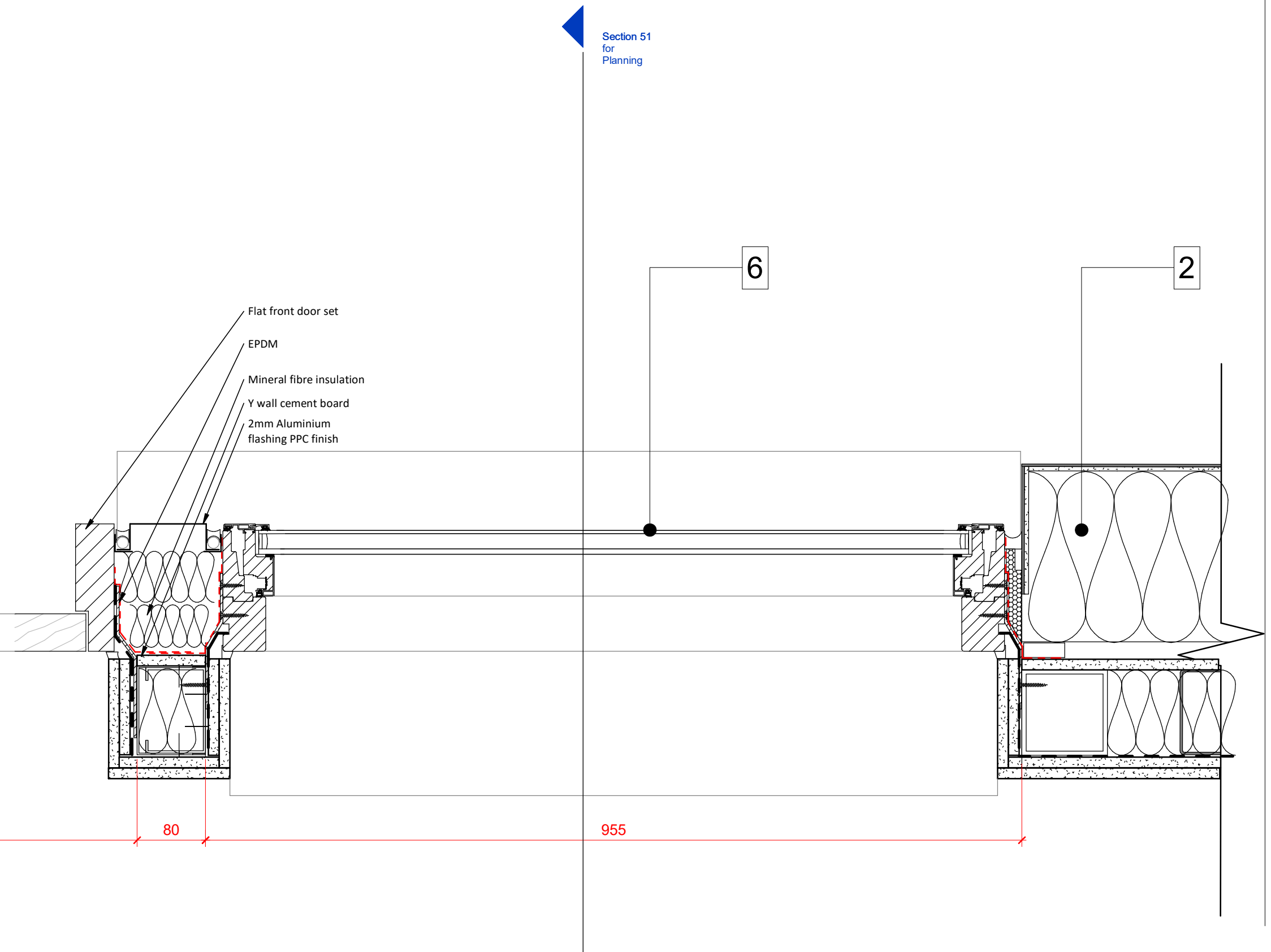


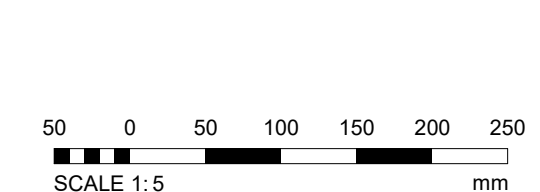
Section 51 for Planning  
1 : 5



01 First Floor Builders Work - Callout 5 for Planning  
1 : 5



Section 50 for Planning  
1 : 5



### Elevation Legend

- Facing Brickwork - Michelmersher Ref. 25\_13\_50\_51 Lindfield Yellow Multi. Medium buff. Mortar colour: natural
- Render System - Wetherby System Wetherby 4S Silicone 1.5mm 'k' Colour: STO B62 80 03 Finish: roughness level 3.0 Ref. 25\_45\_72\_28
- Corium Terracotta Rainscreen Cladding Ref. 25\_20\_70\_25 Colour: Green with glazed finish Cladding mortar: PAREX Historical KL EA255 Light Grey
- Metal mesh panels on SHS framing to stair core. Finish: galvanised mild steel mesh Manufacturer/Supplier: Jackson Fencing Material: 4 mm steel wire panel Finish: Galvanised Reference: 358 Securi-Mesh
- Profiled metal cladding to stair core and ends of walkways Colour: RAL 1035
- Ideal Combi Futura + windows Colour: RAL 1035
- KAWNEER AA100 curtain wall and door Colour: RAL 1035
- Maintenance access ladder - galvanised steel
- Balustrade (rear elevation): RAL 9003
- Louvre doors Colour: RAL 1035
- Walkways floor finish: Parkside Architectural Tiles Range: Elvert Sand 5770 Colour: "Sand"
- Acoustic plant screen. Colour: RAL1035

PL1	27-01-2025	TP	TE	Issued to discharge Planning Condition 3
REV	DATE	BY	CHECKED	NOTE

**WG1**

STATUS: S3  
SUITABILITY DESCRIPTION: SUITABLE FOR REVIEW AND COMMENT

Wetkins Gray International LLP  
Colindale House, 1 London Bridge Walk, London SE1 2DL, United Kingdom  
t: +44 (0)20 7940 8400

Camden Hostels Project - Camden Road Site,  
248-250 Camden Road, London NW1 9HE

Camden - Planning - Typical walkway  
entrance door & window

SIZE	SCALE	DRAWN BY		CHECKED BY		FIRST ISSUE DATE	
A0	As indicated	AA		TP		27/01/25	
Project Number	Originator	Zone	Level	Type	Role	Number	Revision
123007	WGI	CA	ZZ	DR	A	4002	PL1