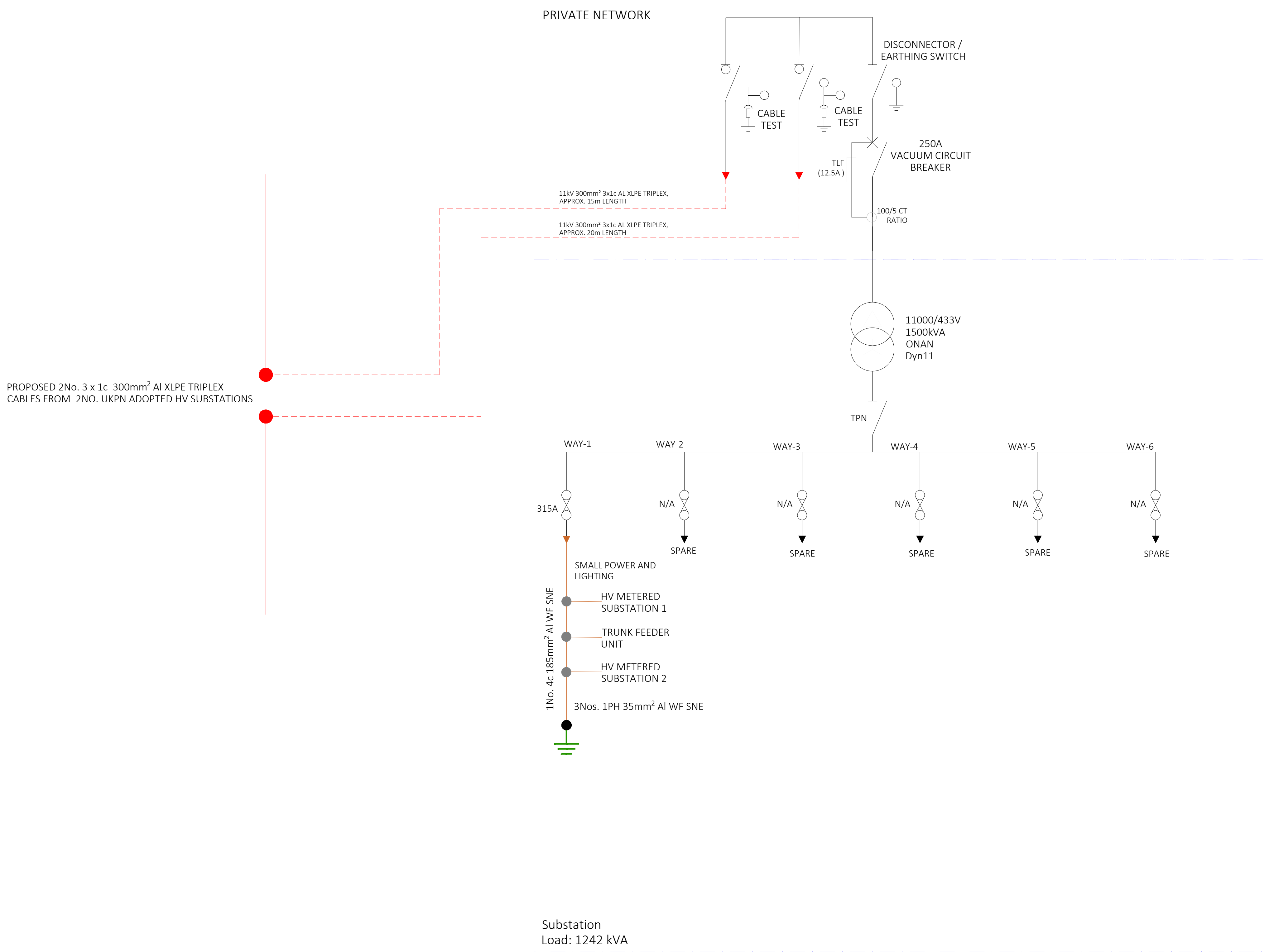


11kV VRN2a NON EXTENSIBLE TRANSFORMER MOUNTED BOTTOM ENTRY RMU WITH 250A VCB TLF PROTECTED | 11/0.433kV 1500kVA ONAN TRANSFORMER | ACULOK 1600A 6 FUSEWAYS LV CABINET



PROPOSED 2No. 3 x 1c 300mm² Al XLPE TRIPLEX CABLES FROM 2NO. UKPN ADOPTED HV SUBSTATIONS

REV	DESCRIPTION	BY	DATE
P4	CABLES INFO. UPDATED	AT	22/01/2025
P3	CABLES INFO. UPDATED	AT	16/01/2025
P2	DWG UPDATED TBS SUB	AT	21/11/2024
P1	FIRST DRAFT	AT	13/11/2024

STATUS: DRAFT



THIS DRAWING IS THE PROPERTY OF DELTA HV LTD AND IT MUST NOT BE COPIED OR USED FOR PURPOSES OTHER THAN THAT FOR WHICH IT IS SUPPLIED WITHOUT WRITTEN CONSENT

PROJECT: 02 FINCHLEY ROAD LONDON NW3 6LU

DRAWING TITLE: SINGLE LINE DIAGRAM TBS SUBSTATION

SCALE	DRAWN	CHECKED	APPROVED
1:20	AT	YG	

DRAWING NUMBER: DHV\_ICP3138-FINC-10000

REV: P4