

THIS DRAWING IS INDICATIVE AND REPRESENTS ONLY THE DESIGN INTENT. THE CONTRACTOR MUST PRODUCE FULLY CO-ORDINATED WORKING / INSTALLATION DRAWINGS AS REFERRED TO IN THE CONTRACT DOCUMENTATION

NOTES

- DO NOT SCALE FROM THIS DRAWING. ALL DIMENSIONS INDICATED ARE IN MILLIMETRES
- DRAWING TO BE READ IN CONJUNCTION WITH SPECIFICATION, DOCUMENTATION, DRAWINGS & ALL RELEVANT BRITISH STANDARD DOCUMENTS
- ALL ELECTRICAL WORKS SHALL COMPLY WITH 18TH EDITION IET WIRING REGS BS7671:2018+A2:2022. INCLUDING ALL CURRENT AMENDMENTS AND GUIDANCE NOTES AND THE CURRENT BUILDING STANDARDS REGULATIONS
- THE INSTALLATION SHALL ONLY BE CERTIFIED BY A PERSON OR A COMPANY HAVING MEMBERSHIP TO S.E.L.E.C.T. OR N.I.C.E.I.C. OR SIMILAR ELECTRICAL SCHEMES
- ELECTRICAL ACCESSORY POSITIONS ARE INDICATIVE ONLY. ELECTRICAL CONTRACTOR TO REFER TO ARCHITECTS SETTING OUT DRAWINGS FOR EXACT DIMENSIONS / LOCATIONS.
- CONTRACTOR TO ALLOW FOR COORDINATION OF ALL MECHANICAL AND ELECTRICAL SERVICES THROUGHOUT.
- CONTRACTOR TO ALLOW FOR SITE COORDINATION WITH OTHER TRADE/SERVICE INSTALLATIONS.
- ALL FINAL CIRCUIT WIRING TO BE MULTICORE FLEXISHEILD TYPE.
- SOCKET / DATA OUTLETS TO BE FLUSH MOUNTED THROUGHOUT.
- SOCKET OUTLET FINISHES TBC BY INTERIOR DESIGNER.
- SOCKET OUTLETS TO ALL PLANT / STORE SPACES TO BE SURFACE MOUNTED METAL CLAD.
- ALL ELECTRICAL OUTLETS TO BE FULLY AGREED / SIGNED OFF BY INTERIOR DESIGNER PRIOR TO INSTALLATION.
- ALL CABLE / TV / DATA OUTLETS THROUGHOUT TO MATCH OUTLET FINISH WITHIN GIVEN SPACE.
- ALL FINAL WAP LOCATIONS TO BE CONFIRMED WITH AV SPECIALIST. ACCESS POINTS & ASSOCIATED POWER SERVICES TO BE CEILING MOUNTED.
- ACCESSORY PLATES WITHIN THE KITCHEN SHALL BE ENGRAVED WITH THE NAME OF EQUIPMENT SERVED (5mm BLACK LETTERING).
- THE ELECTRICAL CONTRACTOR SHALL ENSURE THAT SOCKET OUTLETS ETC. ARE NOT INSTALLED BACK TO BACK TO ENSURE THE ACOUSTIC INTEGRITY OF THE WALLS BETWEEN THEM IS MAINTAINED.
- EVERY SERVICE, FITTING AND PIECE OF EQUIPMENT IS PROVIDED SO AS TO SERVE A PURPOSE OF THE BUILDING REGULATIONS AND IS TO BE DESIGNED, INSTALLED AND COMMISSIONED IN SUCH A WAY TO FULFIL THOSE PURPOSES.
- ELECTRICAL CONTRACTOR TO ALLOW FOR INSTALLING, TESTING & COMMISSIONING OF ALL ACCESSORIES. THEN REMOVAL TO ALLOW FOR FINAL DECORATION.
- POWER SUPPLIES FOR ALL MECHANICAL PLANT ARE SUBJECT TO CHANGE. REFER TO MECHANICAL LAYOUTS FOR DETAILS.
- THIS DRAWING DOES NOT REMOVE THE CONTRACTORS RESPONSIBILITY TO:
 - PRODUCE THEIR OWN WORKING DRAWINGS.
 - TAKE ALL SITE DIMENSIONS AS REQUIRED.
 - COORDINATE WITH OTHER SERVICES AND THE BUILDING STRUCTURE

2 COMPARTMENT METALLIC SKIRTING TRUNKING
 CEILING MOUNTED DOUBLE DATA OUTLETS FOR CEILING MICROPHONE. CABLED TO A PoE SWITCH
 SWITCHED FUSE SPUR LINKED TO LIGHTING CONTROL SWITCH FOR INTEGRATED JOINERY LIGHTING
 EXITING DESKS HAVE HARD WIRED POWER & DATA OUTLETS. CONTRACTOR TO ALLOW FOR REMOVAL OF HARDWIRED OUTLETS & ALL ASSOCIATED FIXINGS AS REQUIRED WHERE FURNITURE IS BEING RE-POSITIONED & RE-FIX ONCE RE-POSITIONED.
 CABLEWAYS TO BE PULLED BACK/EXTENDED WITHIN FLOOR VOID AS REQUIRED.

SWITCHED FUSE SPUR LINKED TO LIGHTING CONTROL SWITCH FOR INTEGRATED JOINERY LIGHTING

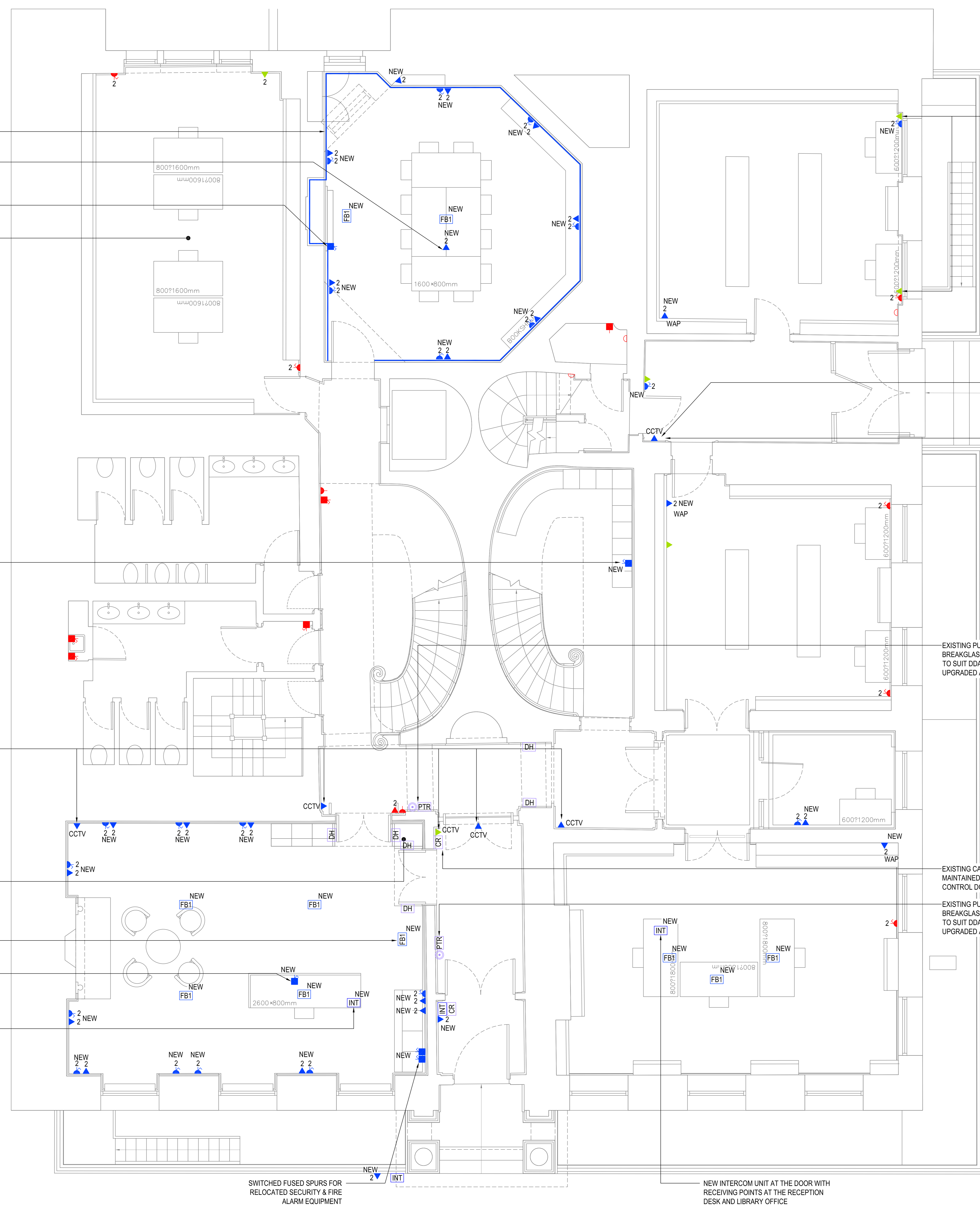
DATA OUTLET AT HL

ALL EQUIPMENT & ASSOCIATED POWER & DATA OUTLETS TO BE RELOCATED TO NEW CUPBOARD. REFER TO 310311-HAH-XX-00-D-E-06111

POWER & DATA PROVIDED FOR PRINTER & FRANKING MACHINE. ARCHITECT TO CONFIRM FINAL LOCATIONS

SWITCHED FUSE SPUR LINKED TO LIGHTING CONTROL SWITCH FOR INTEGRATED JOINERY LIGHTING

NEW INTERCOM UNIT AT THE DOOR WITH RECEIVING POINTS AT THE RECEPTION DESK AND LIBRARY OFFICE.



SWITCHED FUSED SPURS FOR RELOCATED SECURITY & FIRE ALARM EQUIPMENT

NEW INTERCOM UNIT AT THE DOOR WITH RECEIVING POINTS AT THE RECEPTION DESK AND LIBRARY OFFICE

DOUBLE DATA POINT RE-CABLED FROM SWITCH VIA BASEMENT

DATA OUTLET AT HL

CCTV CAMERA CABLE CURRENTLY SURFACE MOUNTED ON THE WALL WITHIN MINI TRUNKING. CABLE TO BE PULLED BACK, WALL CHASED AND CABLE RE-INSTALLED UP TO CCTV POSITION

EXISTING PUSH TO EXIT AND GREEN BREAKGLASS POSITION TO BE LOWERED TO SUIT DDA REQUIREMENTS FOR UPGRADED ACCESS CONTROL DOOR.

EXISTING CARD READER POSITION TO BE MAINTAINED FOR UPGRADED ACCESS CONTROL DOOR.

EXISTING PUSH TO EXIT AND GREEN BREAKGLASS POSITION TO BE LOWERED TO SUIT DDA REQUIREMENTS FOR UPGRADED ACCESS CONTROL DOOR.

NEW SMALL POWER & DATA LEGEND

ALL NEW ELECTRICAL ELEMENTS NOTED AS NEW & COLOURED BLUE

- NEW SINGLE SWITCHED SOCKET OUTLET
- 2 NEW TWIN SWITCHED SOCKET OUTLET
- USB NEW SOCKET OUTLET c/w TWIN USB PORT
- IP NEW IP66 RATED EXTERNAL SOCKET OUTLET
- NEW UNSWITCHED FUSED CONNECTION UNIT (OPTIONAL PILOT LIGHT)
- NEW SWITCHED FUSED CONNECTION UNIT (OPTIONAL PILOT LIGHT)
- FB1 3 COMPARTMENT FLOORBOX c/w 2 No. TWIN 13A SOCKET OUTLETS & 2 No. TWIN DATA OUTLETS
- FB2 1 COMPARTMENT FLOORBOX c/w TWIN SOCKET OUTLET
- T TELEPHONE POINT
- 2 TWIN DATA OUTLET
- GREEN DISTRIBUTION BOARD
- NEW IP BASED INTERCOM SYSTEM TO BE INSTALLED WITH NEW POLISHED BRASS FINISHED EXTERNAL UNIT AND INTERNAL RECEIVING POINTS INSTALLED TO THE DESK OF THE RECEPTION AND LIBRARY.
- INT

EXISTING SMALL POWER & DATA LEGEND

- RED SINGLE SWITCHED SOCKET OUTLET
- 2 RED TWIN SWITCHED SOCKET OUTLET
- USB RED SOCKET OUTLET c/w TWIN USB PORT
- IP RED IP66 RATED EXTERNAL SOCKET OUTLET
- RED UNSWITCHED FUSED CONNECTION UNIT (OPTIONAL PILOT LIGHT)
- RED SWITCHED FUSED CONNECTION UNIT (OPTIONAL PILOT LIGHT)
- FB1 FLOORBOX
- T TELEPHONE POINT
- 2 TWIN DATA OUTLET

ABBREVIATIONS

- CV CEILING VOID
- L/L LOW LEVEL
- M/L MID LEVEL
- H/L HIGH LEVEL

REV	DESCRIPTION	BY	CHK	APP	DATE
P06	LBC UPDATES	PS	AJ	AJ	05.03.25
P05	LBC UPDATE	PS	AJ	AJ	04.03.25
P04	LBC UPDATES	PS	AJ	AJ	04.03.25
P03	UPDATED TENDER ISSUE	PS	AJ	AJ	16.12.24
P02	TENDER ISSUE	VK	TD	AJ	05.09.23
P01	ISSUED TO ARCHITECT FOR COMMENT/ APPROVAL	VK	TD	AJ	22.08.23

Project Status: **LBC SUBMISSION**

Project: 310311
GERMAN HISTORICAL INSTITUTE
17 BLOOMSBURY SQUARE

Drawing Title:
GROUND FLOOR PROPOSED SMALL POWER & DATA LAYOUT

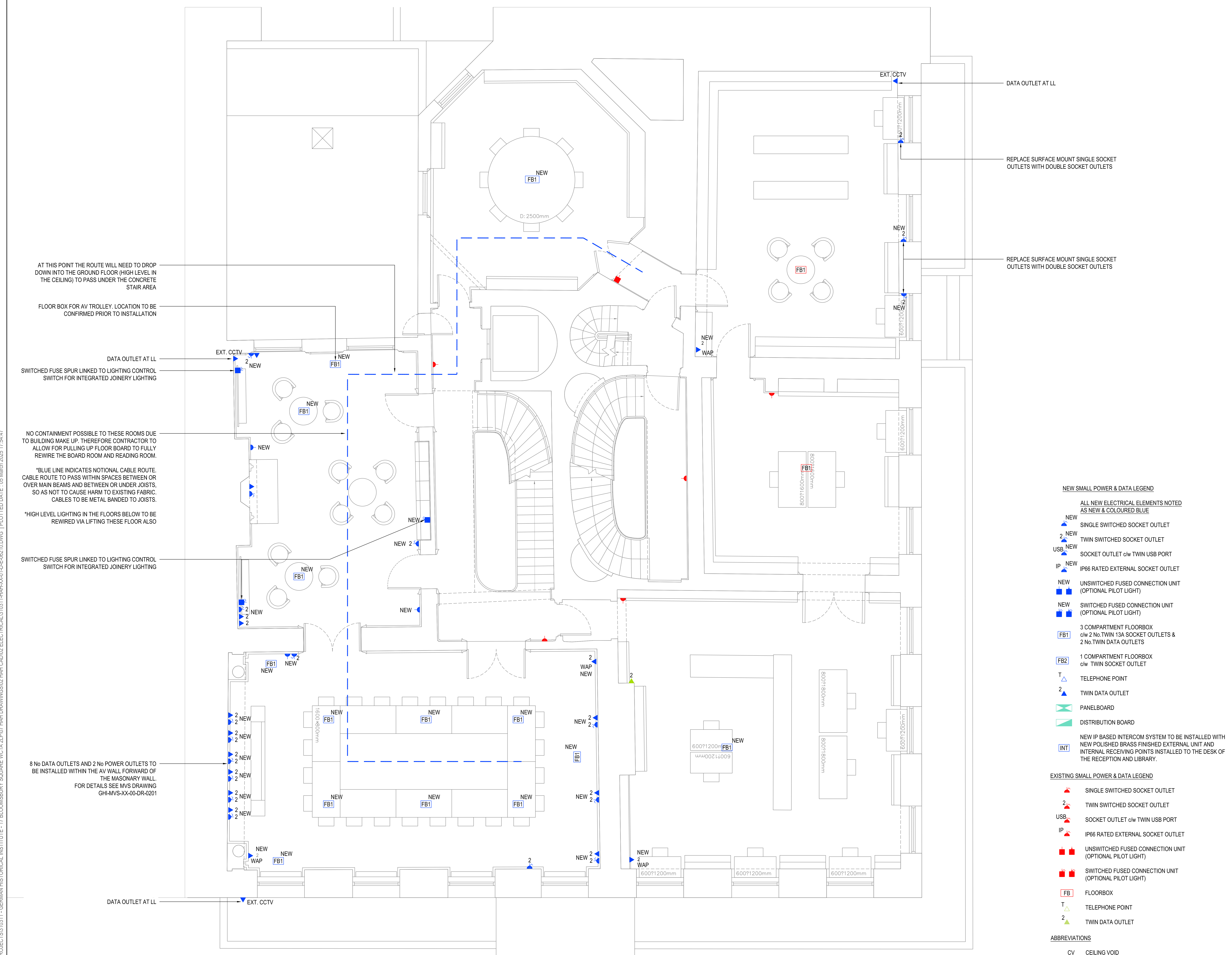
Scale @ A1	Date	Engineer
1:50	JUNE 2023	AJ
Drawing No.	310311-HAH-XX-00-D-E-06210	Revision
		P06

FILENAME: Z:\PROJECTS\310311 - GERMAN HISTORICAL INSTITUTE - 17 BLOOMSBURY SQUARE\NICIA_2\1P\07\HAH DRAWINGS\02_HAH_CAD\02 ELECTRICAL\310311-HAH-XX-00-D-E-06210.DWG | PLOTTED DATE: 05 March 2025 17:52:14

THIS DRAWING IS INDICATIVE AND REPRESENTS ONLY THE DESIGN INTENT. THE CONTRACTOR MUST PRODUCE FULLY CO-ORDINATED WORKING / INSTALLATION DRAWINGS AS REFERRED TO IN THE CONTRACT DOCUMENTATION

NOTES

- DO NOT SCALE FROM THIS DRAWING. ALL DIMENSIONS INDICATED ARE IN MILLIMETRES
- DRAWING TO BE READ IN CONJUNCTION WITH SPECIFICATION, DOCUMENTATION, DRAWINGS & ALL RELEVANT BRITISH STANDARD DOCUMENTS
- ALL ELECTRICAL WORKS SHALL COMPLY WITH 18TH EDITION IET WIRING REGS BS7671:2018+A2:2022. INCLUDING ALL CURRENT AMENDMENTS AND GUIDANCE NOTES AND THE CURRENT BUILDING STANDARDS REGULATIONS
- THE INSTALLATION SHALL ONLY BE CERTIFIED BY A PERSON OR A COMPANY HAVING MEMBERSHIP TO S.E.I.C.T. OR N.I.C.E.I.C. OR SIMILAR ELECTRICAL SCHEMES
- ELECTRICAL ACCESSORY POSITIONS ARE INDICATIVE ONLY. ELECTRICAL CONTRACTOR TO REFER TO ARCHITECTS SETTING OUT DRAWINGS FOR EXACT DIMENSIONS / LOCATIONS.
- CONTRACTOR TO ALLOW FOR COORDINATION OF ALL MECHANICAL AND ELECTRICAL SERVICES THROUGHOUT.
- CONTRACTOR TO ALLOW FOR SITE COORDINATION WITH OTHER TRADE/SERVICE INSTALLATIONS.
- ALL FINAL CIRCUIT WIRING TO BE MULTICORE FLEXISHEILD TYPE.
- SOCKET / DATA OUTLETS TO BE FLUSH MOUNTED THROUGHOUT.
- SOCKET OUTLET FINISHES TBC BY INTERIOR DESIGNER.
- SOCKET OUTLETS TO ALL PLANT / STORE SPACES TO BE SURFACE MOUNTED METAL CLAD.
- ALL ELECTRICAL OUTLETS TO BE FULLY AGREED / SIGNED OFF BY INTERIOR DESIGNER PRIOR TO INSTALLATION.
- ALL CABLE / TV / DATA OUTLETS THROUGHOUT TO MATCH OUTLET FINISH WITHIN GIVEN SPACE.
- ALL FINAL WAP LOCATIONS TO BE CONFIRMED WITH AV SPECIALIST. ACCESS POINTS & ASSOCIATED POWER SERVICES TO BE CEILING MOUNTED.
- ACCESSORY PLATES WITHIN THE KITCHEN SHALL BE ENGRAVED WITH THE NAME OF EQUIPMENT SERVED (5mm BLACK LETTERING).
- THE ELECTRICAL CONTRACTOR SHALL ENSURE THAT SOCKET OUTLETS ETC. ARE NOT INSTALLED BACK TO BACK TO ENSURE THE ACOUSTIC INTEGRITY OF THE WALLS BETWEEN THEM IS MAINTAINED.
- EVERY SERVICE, FITTING AND PIECE OF EQUIPMENT IS PROVIDED SO AS TO SERVE A PURPOSE OF THE BUILDING REGULATIONS AND IS TO BE DESIGNED, INSTALLED AND COMMISSIONED IN SUCH A WAY TO FULFIL THOSE PURPOSES.
- ELECTRICAL CONTRACTOR TO ALLOW FOR INSTALLING, TESTING & COMMISSIONING OF ALL ACCESSORIES. THEN REMOVAL TO ALLOW FOR FINAL DECORATION.
- POWER SUPPLIES FOR ALL MECHANICAL PLANT ARE SUBJECT TO CHANGE. REFER TO MECHANICAL LAYOUTS FOR DETAILS.
- THIS DRAWING DOES NOT REMOVE THE CONTRACTORS RESPONSIBILITY TO:
 - PRODUCE THEIR OWN WORKING DRAWINGS.
 - TAKE ALL SITE DIMENSIONS AS REQUIRED.
 - COORDINATE WITH OTHER SERVICES AND THE BUILDING STRUCTURE



- NEW SMALL POWER & DATA LEGEND**
- ▲ NEW SINGLE SWITCHED SOCKET OUTLET
 - ▲ NEW 2 TWIN SWITCHED SOCKET OUTLET
 - ▲ NEW USB SOCKET OUTLET c/w TWIN USB PORT
 - ▲ NEW IP IP66 RATED EXTERNAL SOCKET OUTLET
 - NEW UNSWITCHED FUSED CONNECTION UNIT (OPTIONAL PILOT LIGHT)
 - NEW SWITCHED FUSED CONNECTION UNIT (OPTIONAL PILOT LIGHT)
 - FB1 3 COMPARTMENT FLOORBOX c/w 2 No. TWIN 13A SOCKET OUTLETS & 2 No. TWIN DATA OUTLETS
 - FB2 1 COMPARTMENT FLOORBOX c/w TWIN SOCKET OUTLET
 - T TELEPHONE POINT
 - 2 TWIN DATA OUTLET
 - PANELBOARD
 - DISTRIBUTION BOARD
 - INT NEW IP BASED INTERCOM SYSTEM TO BE INSTALLED WITH NEW POLISHED BRASS FINISHED EXTERNAL UNIT AND INTERNAL RECEIVING POINTS INSTALLED TO THE DESK OF THE RECEPTION AND LIBRARY.
- EXISTING SMALL POWER & DATA LEGEND**
- ▲ SINGLE SWITCHED SOCKET OUTLET
 - ▲ 2 TWIN SWITCHED SOCKET OUTLET
 - ▲ USB SOCKET OUTLET c/w TWIN USB PORT
 - ▲ IP IP66 RATED EXTERNAL SOCKET OUTLET
 - UNSWITCHED FUSED CONNECTION UNIT (OPTIONAL PILOT LIGHT)
 - SWITCHED FUSED CONNECTION UNIT (OPTIONAL PILOT LIGHT)
 - FB1 FLOORBOX
 - T TELEPHONE POINT
 - 2 TWIN DATA OUTLET
- ABBREVIATIONS**
- CV CEILING VOID
 - LL LOW LEVEL
 - ML MID LEVEL
 - HL HIGH LEVEL

P05 LBC UPDATE	PS	AJ	AJ	05.03.25
P04 LBC UPDATE	PS	AJ	AJ	04.03.25
P03 UPDATED TENDER ISSUE	PS	AJ	AJ	16.12.24
P02 TENDER ISSUE	VK	TD	AJ	05.09.23
P01 ISSUED TO ARCHITECT FOR COMMENT/APPROVAL	VK	TD	AJ	22.08.23
REV DESCRIPTION	BY	CHK	APP	DATE

Project Status: **LBC SUBMISSION**

The Multi-disciplinary Engineering Consultancy

h HARLEY HADDOW

Unit A2, Hatchers Yard, 9 Tanner Street
London, SE1 3LE
T 44 (0) 203 735 5060
E london@harleyhaddow.com
Edinburgh | Glasgow | London | Manchester
harleyhaddow.com
Association for Consulting and Engineering Member Firm

Project: 310311
GERMAN HISTORICAL INSTITUTE
17 BLOOMSBURY SQUARE

Drawing Title:
FIRST FLOOR PROPOSED CONTAINMENT LAYOUT

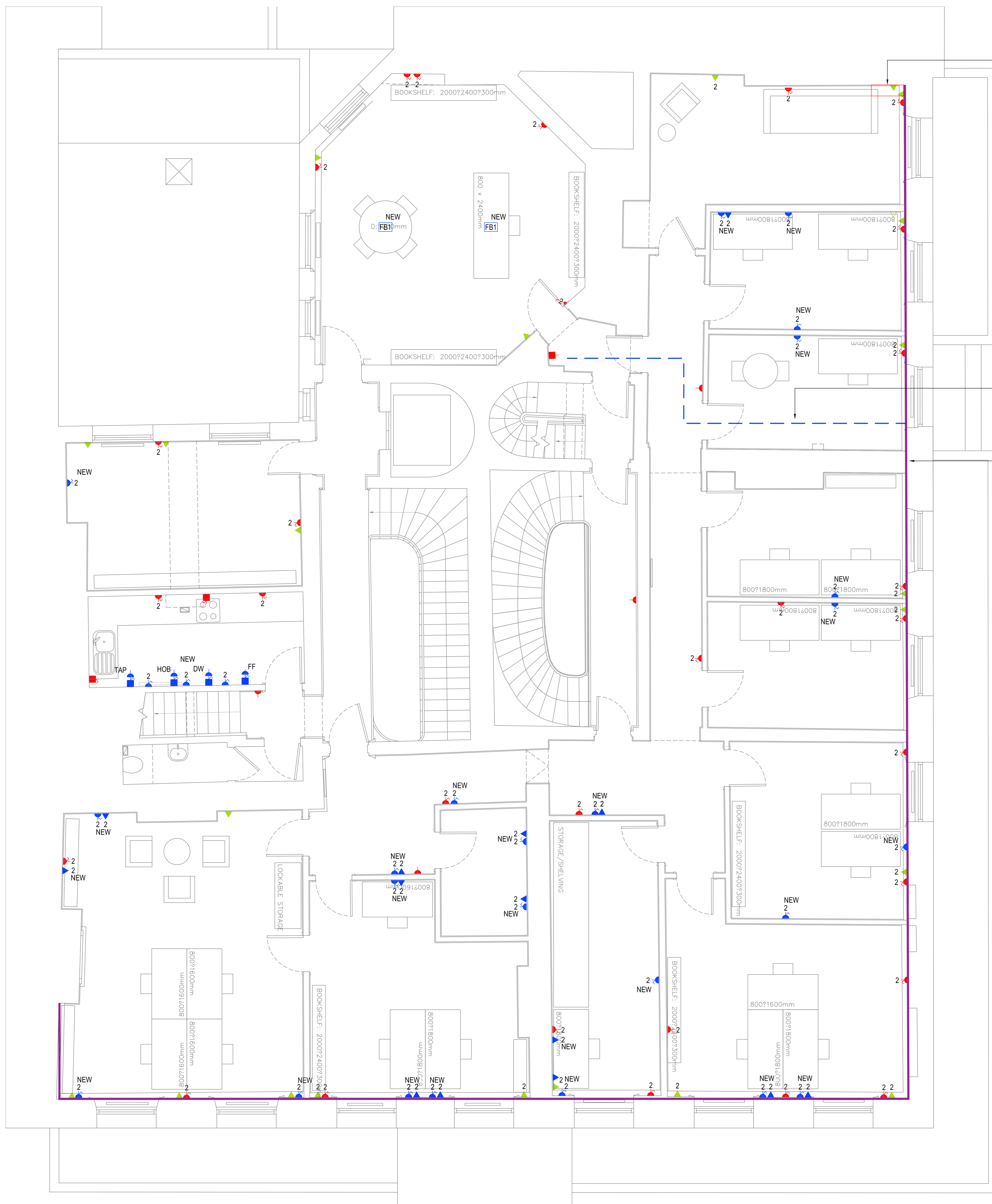
Scale @ A1	Date	Engineer
1:50	JUNE 2023	AJ
Drawing No.	Revision	
310311-HAH-XX-01-D-E-06210	P05	

FILENAME: Z:\PROJECTS\310311 - GERMAN HISTORICAL INSTITUTE - 17 BLOOMSBURY SQUARE\NC1A.2\1P07\HAH DRAWINGS\02 HAH CAD\02 ELECTRICAL\310311-HAH-XX-01-D-E-06210.DWG | PLOTTED DATE: 05 March 2025 17:54:47

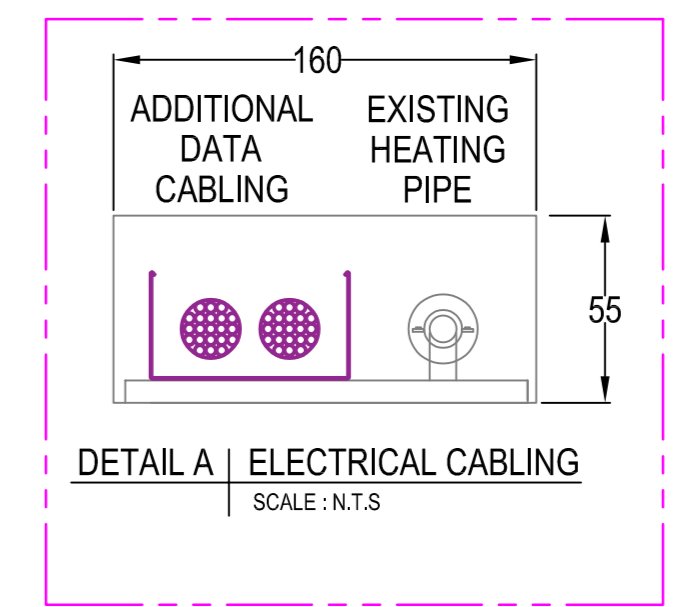
THIS DRAWING IS INDICATIVE AND REPRESENTS ONLY THE DESIGN INTENT. THE CONTRACTOR MUST PRODUCE FULLY CO-ORDINATED WORKING / INSTALLATION DRAWINGS AS REFERRED TO IN THE CONTRACT DOCUMENTATION

NOTES

- DO NOT SCALE FROM THIS DRAWING. ALL DIMENSIONS INDICATED ARE IN MILLIMETRES
- DRAWING TO BE READ IN CONJUNCTION WITH SPECIFICATION, DOCUMENTATION, DRAWINGS & ALL RELEVANT BRITISH STANDARD DOCUMENTS
- ALL ELECTRICAL WORKS SHALL COMPLY WITH 18TH EDITION IET WIRING REGS BS7671:2018+A2:2022. INCLUDING ALL CURRENT AMENDMENTS AND GUIDANCE NOTES AND THE CURRENT BUILDING STANDARDS REGULATIONS
- THE INSTALLATION SHALL ONLY BE CERTIFIED BY A PERSON OR A COMPANY HAVING MEMBERSHIP TO S.E.I.E.C.T. OR N.I.C.E.I.C. OR SIMILAR ELECTRICAL SCHEMES
- ELECTRICAL ACCESSORY POSITIONS ARE INDICATIVE ONLY. ELECTRICAL CONTRACTOR TO REFER TO ARCHITECTS SETTING OUT DRAWINGS FOR EXACT DIMENSIONS / LOCATIONS.
- CONTRACTOR TO ALLOW FOR COORDINATION OF ALL MECHANICAL AND ELECTRICAL SERVICES THROUGHOUT.
- CONTRACTOR TO ALLOW FOR SITE COORDINATION WITH OTHER TRADE/SERVICE INSTALLATIONS.
- ALL FINAL CIRCUIT WIRING TO BE MULTICORE FLEXISHEILD TYPE.
- SOCKET / DATA OUTLETS TO BE FLUSH MOUNTED THROUGHOUT.
- SOCKET OUTLET FINISHES TBC BY INTERIOR DESIGNER.
- SOCKET OUTLETS TO ALL PLANT / STORE SPACES TO BE SURFACE MOUNTED METAL CLAD.
- ALL ELECTRICAL OUTLETS TO BE FULLY AGREED / SIGNED OFF BY INTERIOR DESIGNER PRIOR TO INSTALLATION.
- ALL CABLE / TV / DATA OUTLETS THROUGHOUT TO MATCH OUTLET FINISH WITHIN GIVEN SPACE.
- ALL FINAL WAP LOCATIONS TO BE CONFIRMED WITH AV SPECIALIST. ACCESS POINTS & ASSOCIATED POWER SERVICES TO BE CEILING MOUNTED.
- ACCESSORY PLATES WITHIN THE KITCHEN SHALL BE ENGRAVED WITH THE NAME OF EQUIPMENT SERVED (5mm BLACK LETTERING).
- THE ELECTRICAL CONTRACTOR SHALL ENSURE THAT SOCKET OUTLETS ETC. ARE NOT INSTALLED BACK TO BACK TO ENSURE THE ACOUSTIC INTEGRITY OF THE WALLS BETWEEN THEM IS MAINTAINED.
- EVERY SERVICE, FITTING AND PIECE OF EQUIPMENT IS PROVIDED SO AS TO SERVE A PURPOSE OF THE BUILDING REGULATIONS AND IS TO BE DESIGNED, INSTALLED AND COMMISSIONED IN SUCH A WAY TO FULFIL THOSE PURPOSES.
- ELECTRICAL CONTRACTOR TO ALLOW FOR INSTALLING, TESTING & COMMISSIONING OF ALL ACCESSORIES. THEN REMOVAL TO ALLOW FOR FINAL DECORATION.
- POWER SUPPLIES FOR ALL MECHANICAL PLANT ARE SUBJECT TO CHANGE. REFER TO MECHANICAL LAYOUTS FOR DETAILS.
- THIS DRAWING DOES NOT REMOVE THE CONTRACTORS RESPONSIBILITY TO:
 - PRODUCE THEIR OWN WORKING DRAWINGS.
 - TAKE ALL SITE DIMENSIONS AS REQUIRED.
 - COORDINATE WITH OTHER SERVICES AND THE BUILDING STRUCTURE



WALL BOXING OUT REQUIRED FOR CABLES DROPPING FROM DATA ROOM ABOVE IN TO PERIMETER BOXING



FLOOR BOARDS REMOVED AND CABLE DISTRIBUTED THROUGH FLOOR FROM RISER AND/OR DISTRIBUTION BOARD TO PERIMETER CONTAINMENT ROUTE FOR NEW POWER CIRCUITS OR DATA CABLES

EXISTING PERIMETER BOXING CONTAINING HEATING PIPE REMOVED AND REBUILT TO HOUSE ADDITIONAL DATA CABLING ROUTE. CLEAR OPEN AREA REQUIRED SEE DETAIL A

SMALL POWER AND LIGHTING CABLES TO BE FULLY REWIRED AREAS TO BE RUN THROUGH EXISTING NOTCHES/HOLES WITHIN JOISTS

NEW SMALL POWER & DATA LEGEND

ALL NEW ELECTRICAL ELEMENTS NOTED AS NEW & COLOURED BLUE

- NEW SINGLE SWITCHED SOCKET OUTLET
- NEW TWIN SWITCHED SOCKET OUTLET
- NEW SOCKET OUTLET c/w TWIN USB PORT
- NEW IP66 RATED EXTERNAL SOCKET OUTLET
- NEW UNSWITCHED FUSED CONNECTION UNIT (OPTIONAL PILOT LIGHT)
- NEW SWITCHED FUSED CONNECTION UNIT (OPTIONAL PILOT LIGHT)
- NEW 3 COMPARTMENT FLOORBOX c/w 2 No. TWIN 13A SOCKET OUTLETS & 2 No. TWIN DATA OUTLETS
- NEW 1 COMPARTMENT FLOORBOX c/w TWIN SOCKET OUTLET
- NEW TELEPHONE POINT
- NEW TWIN DATA OUTLET
- NEW PANELBOARD
- NEW DISTRIBUTION BOARD

NEW IP BASED INTERCOM SYSTEM TO BE INSTALLED WITH NEW POLISHED BRASS FINISHED EXTERNAL UNIT AND INTERNAL RECEIVING POINTS INSTALLED TO THE DESK OF THE RECEPTION AND LIBRARY.

EXISTING SMALL POWER & DATA LEGEND

- EXISTING SINGLE SWITCHED SOCKET OUTLET
- EXISTING TWIN SWITCHED SOCKET OUTLET
- EXISTING SOCKET OUTLET c/w TWIN USB PORT
- EXISTING IP66 RATED EXTERNAL SOCKET OUTLET
- EXISTING UNSWITCHED FUSED CONNECTION UNIT (OPTIONAL PILOT LIGHT)
- EXISTING SWITCHED FUSED CONNECTION UNIT (OPTIONAL PILOT LIGHT)
- EXISTING FLOORBOX
- EXISTING TELEPHONE POINT
- EXISTING TWIN DATA OUTLET

ABBREVIATIONS

- CV CEILING VOID
- L/L LOW LEVEL
- M/L MD LEVEL
- H/L HIGH LEVEL

P04	LBC UPDATE	PS	AJ	AJ	05.03.25
P03	LBC UPDATE	PS	AJ	AJ	04.03.25
P02	TENDER ISSUE	VK	TD	AJ	05.09.23
P01	COMMENT/APPROVAL	VK	TD	AJ	22.08.23
REV	DESCRIPTION	BY	CHK	APP	DATE

Project Status: **LBC SUBMISSION**

HARLEY HADDOW
 The Multi-disciplinary Engineering Consultancy
 Unit A2, Hatchers Yard, 9 Tanner Street
 London, SE1 3LE
 T 44 (0) 203 735 5060
 E london@harleyhaddow.com
 Edinburgh | Glasgow | London | Manchester
 harleyhaddow.com
 Association for Consulting and Engineering Member Firm

Project: 310311
GERMAN HISTORICAL INSTITUTE
17 BLOOMSBURY SQUARE

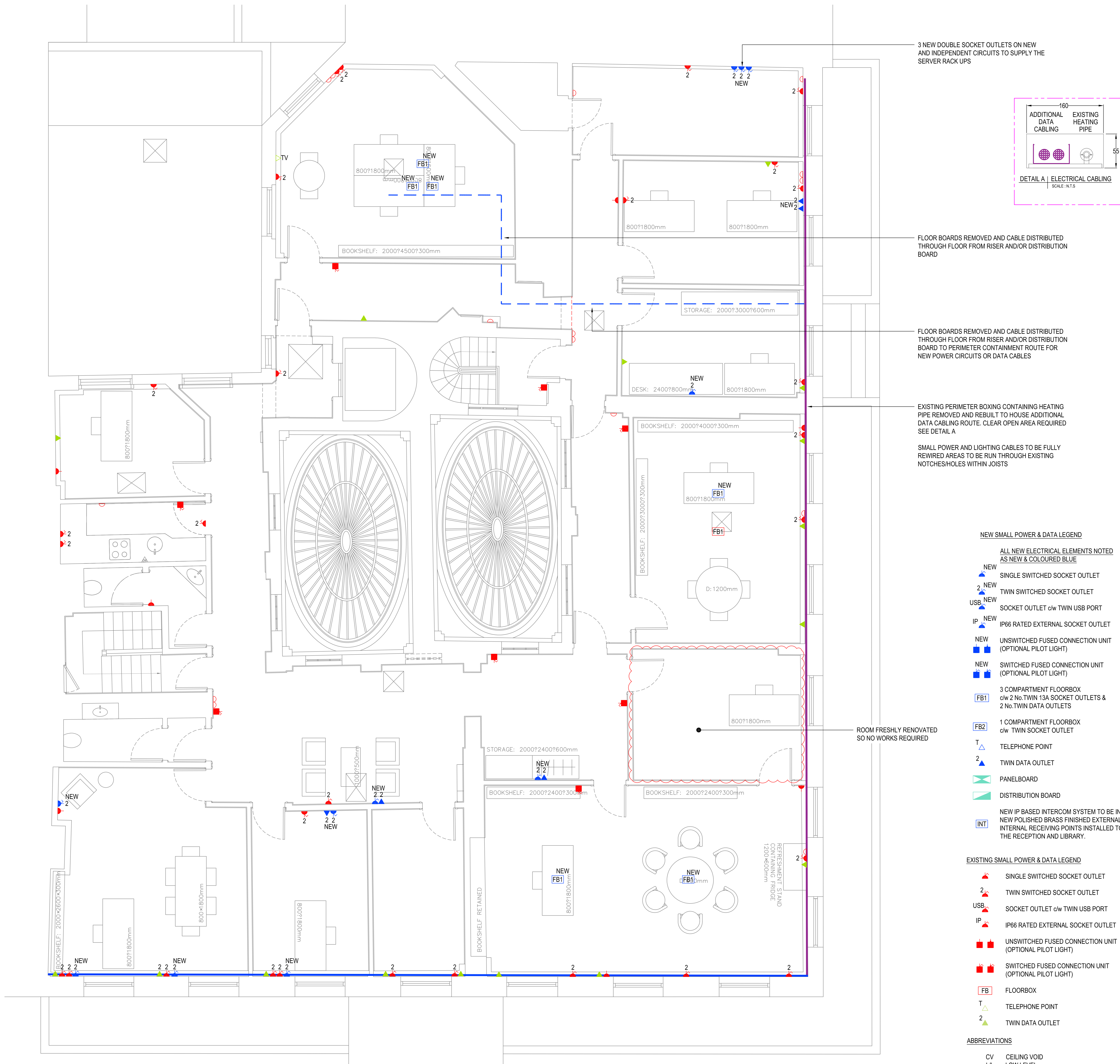
Drawing Title:
SECOND FLOOR PROPOSED SMALL POWER & DATA LAYOUT

Scale @ A1	Date	Engineer
1:50	JUNE 2023	AJ
Drawing No.	Revision	
310311-HAH-XX-02-D-E-06210	P04	

THIS DRAWING IS INDICATIVE AND REPRESENTS ONLY THE DESIGN INTENT. THE CONTRACTOR MUST PRODUCE FULLY CO-ORDINATED WORKING / INSTALLATION DRAWINGS AS REFERRED TO IN THE CONTRACT DOCUMENTATION

NOTES

- DO NOT SCALE FROM THIS DRAWING. ALL DIMENSIONS INDICATED ARE IN MILLIMETRES
- DRAWING TO BE READ IN CONJUNCTION WITH SPECIFICATION, DOCUMENTATION, DRAWINGS & ALL RELEVANT BRITISH STANDARD DOCUMENTS
- ALL ELECTRICAL WORKS SHALL COMPLY WITH 18TH EDITION IET WIRING REGS BS7671:2018+A2:2022. INCLUDING ALL CURRENT AMENDMENTS AND GUIDANCE NOTES AND THE CURRENT BUILDING STANDARDS REGULATIONS
- THE INSTALLATION SHALL ONLY BE CERTIFIED BY A PERSON OR A COMPANY HAVING MEMBERSHIP TO S.E.I.E.C.T. OR N.I.C.E.I.C. OR SIMILAR ELECTRICAL SCHEMES
- ELECTRICAL ACCESSORY POSITIONS ARE INDICATIVE ONLY. ELECTRICAL CONTRACTOR TO REFER TO ARCHITECTS SETTING OUT DRAWINGS FOR EXACT DIMENSIONS / LOCATIONS.
- CONTRACTOR TO ALLOW FOR COORDINATION OF ALL MECHANICAL AND ELECTRICAL SERVICES THROUGHOUT.
- CONTRACTOR TO ALLOW FOR SITE COORDINATION WITH OTHER TRADE/SERVICE INSTALLATIONS.
- ALL FINAL CIRCUIT WIRING TO BE MULTICORE FLEXISHEILD TYPE.
- SOCKET / DATA OUTLETS TO BE FLUSH MOUNTED THROUGHOUT.
- SOCKET OUTLET FINISHES TBC BY INTERIOR DESIGNER.
- SOCKET OUTLETS TO ALL PLANT / STORE SPACES TO BE SURFACE MOUNTED METAL CLAD.
- ALL ELECTRICAL OUTLETS TO BE FULLY AGREED / SIGNED OFF BY INTERIOR DESIGNER PRIOR TO INSTALLATION.
- ALL CABLE / TV / DATA OUTLETS THROUGHOUT TO MATCH OUTLET FINISH WITHIN GIVEN SPACE.
- ALL FINAL WAP LOCATIONS TO BE CONFIRMED WITH AV SPECIALIST. ACCESS POINTS & ASSOCIATED POWER SERVICES TO BE CEILING MOUNTED.
- ACCESSORY PLATES WITHIN THE KITCHEN SHALL BE ENGRAVED WITH THE NAME OF EQUIPMENT SERVED (5mm BLACK LETTERING).
- THE ELECTRICAL CONTRACTOR SHALL ENSURE THAT SOCKET OUTLETS ETC. ARE NOT INSTALLED BACK TO BACK TO ENSURE THE ACOUSTIC INTEGRITY OF THE WALLS BETWEEN THEM IS MAINTAINED.
- EVERY SERVICE, FITTING AND PIECE OF EQUIPMENT IS PROVIDED SO AS TO SERVE A PURPOSE OF THE BUILDING REGULATIONS AND IS TO BE DESIGNED, INSTALLED AND COMMISSIONED IN SUCH A WAY TO FULFIL THOSE PURPOSES.
- ELECTRICAL CONTRACTOR TO ALLOW FOR INSTALLING, TESTING & COMMISSIONING OF ALL ACCESSORIES. THEN REMOVAL TO ALLOW FOR FINAL DECORATION.
- POWER SUPPLIES FOR ALL MECHANICAL PLANT ARE SUBJECT TO CHANGE. REFER TO MECHANICAL LAYOUTS FOR DETAILS.
- THIS DRAWING DOES NOT REMOVE THE CONTRACTORS RESPONSIBILITY TO:
 - PRODUCE THEIR OWN WORKING DRAWINGS.
 - TAKE ALL SITE DIMENSIONS AS REQUIRED.
 - COORDINATE WITH OTHER SERVICES AND THE BUILDING STRUCTURE



- NEW SMALL POWER & DATA LEGEND**
- ALL NEW ELECTRICAL ELEMENTS NOTED AS NEW & COLOURED BLUE
- NEW SINGLE SWITCHED SOCKET OUTLET
 - NEW TWIN SWITCHED SOCKET OUTLET
 - NEW SOCKET OUTLET c/w TWIN USB PORT
 - NEW IP66 RATED EXTERNAL SOCKET OUTLET
 - NEW UNSWITCHED FUSED CONNECTION UNIT (OPTIONAL PILOT LIGHT)
 - NEW SWITCHED FUSED CONNECTION UNIT (OPTIONAL PILOT LIGHT)
 - FB1 3 COMPARTMENT FLOORBOX c/w 2 No. TWIN 13A SOCKET OUTLETS & 2 No. TWIN DATA OUTLETS
 - FB2 1 COMPARTMENT FLOORBOX c/w TWIN SOCKET OUTLET
 - T TELEPHONE POINT
 - 2 TWIN DATA OUTLET
 - PANELBOARD
 - DISTRIBUTION BOARD
- NEW IP BASED INTERCOM SYSTEM TO BE INSTALLED WITH NEW POLISHED BRASS FINISHED EXTERNAL UNIT AND INTERNAL RECEIVING POINTS INSTALLED TO THE DESK OF THE RECEPTION AND LIBRARY.

- EXISTING SMALL POWER & DATA LEGEND**
- SINGLE SWITCHED SOCKET OUTLET
 - TWIN SWITCHED SOCKET OUTLET
 - NEW SOCKET OUTLET c/w TWIN USB PORT
 - NEW IP66 RATED EXTERNAL SOCKET OUTLET
 - UNSWITCHED FUSED CONNECTION UNIT (OPTIONAL PILOT LIGHT)
 - SWITCHED FUSED CONNECTION UNIT (OPTIONAL PILOT LIGHT)
 - FB FLOORBOX
 - T TELEPHONE POINT
 - 2 TWIN DATA OUTLET
- ABBREVIATIONS**
- CV CEILING VOID
 - LL LOW LEVEL
 - ML MID LEVEL
 - HL HIGH LEVEL

P04	LBC UPDATES	PS	AJ	AJ	05.03.25
P03	LBC UPDATES	PS	AJ	AJ	04.03.25
P02	TENDER ISSUE	VK	TD	AJ	05.09.23
P01	ISSUED TO ARCHITECT FOR COMMENT/APPROVAL	VK	TD	AJ	22.08.23
REV	DESCRIPTION	BY	CHK	APP	DATE

Project Status: **LBC SUBMISSION**

The Multi-disciplinary Engineering Consultancy

h HARLEY HADDOW

Unit A2, Hatches Yard, 9 Tanner Street
London, SE1 3LE
T 44 (0) 203 735 5060
E london@harleyhaddow.com
Edinburgh | Glasgow | London | Manchester
harleyhaddow.com
Association for Consulting and Engineering Member Firm

Project: 310311
GERMAN HISTORICAL INSTITUTE
17 BLOOMSBURY SQUARE

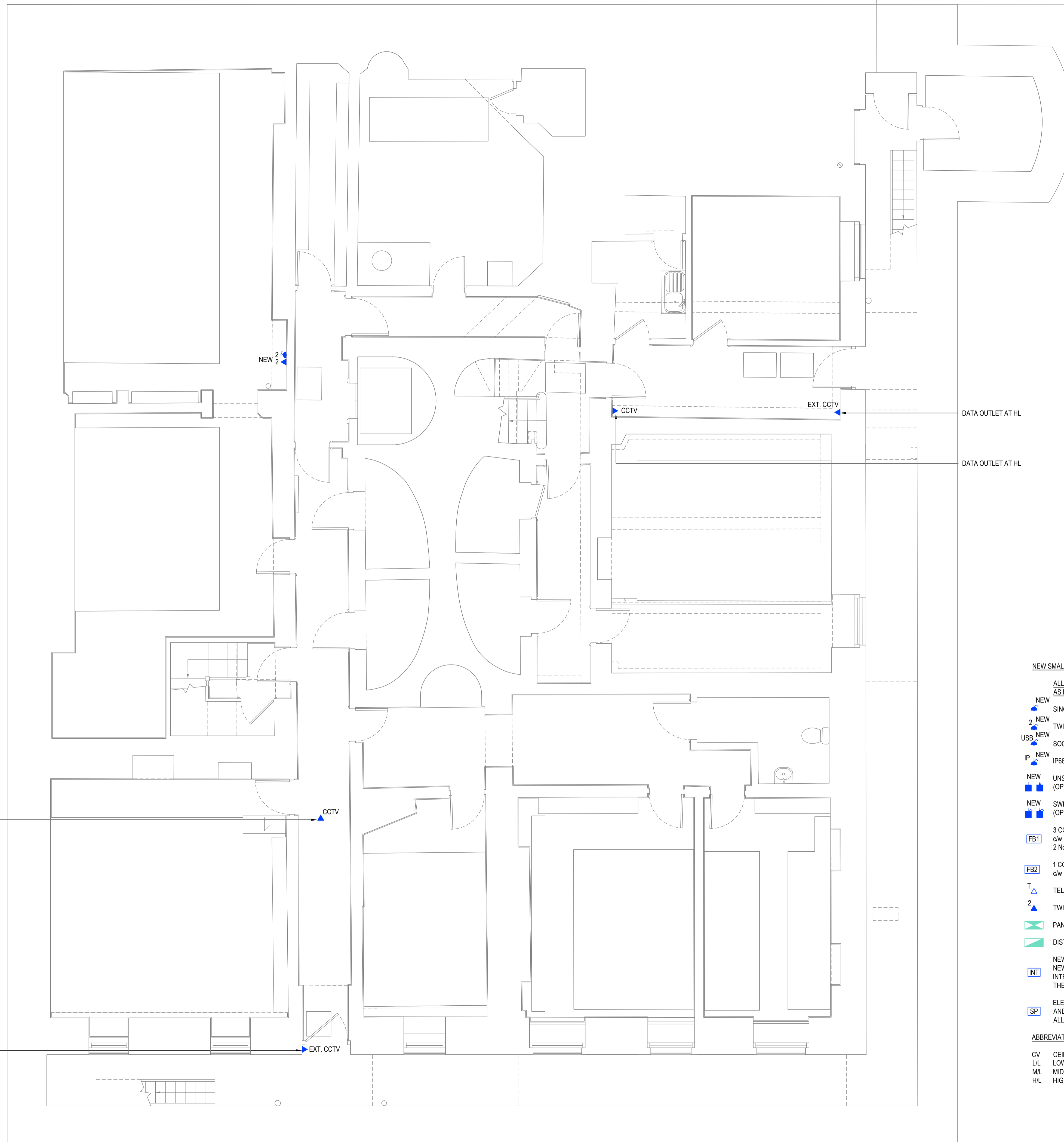
Drawing Title:
THIRD FLOOR PROPOSED SMALL POWER & DATA LAYOUT

Scale @ A1	Date	Engineer
1:50	JUNE 2023	AJ
Drawing No.	Revision	
310311-HAH-XX-03-D-E-06210	P04	

THIS DRAWING IS INDICATIVE AND REPRESENTS ONLY THE DESIGN INTENT, THE CONTRACTOR MUST PRODUCE FULLY CO-ORDINATED WORKING / INSTALLATION DRAWINGS AS REFERRED TO IN THE CONTRACT DOCUMENTATION

NOTES

- DO NOT SCALE FROM THIS DRAWING. ALL DIMENSIONS INDICATED ARE IN MILLIMETRES
- DRAWING TO BE READ IN CONJUNCTION WITH SPECIFICATION, DOCUMENTATION, DRAWINGS & ALL RELEVANT BRITISH STANDARD DOCUMENTS
- ALL ELECTRICAL WORKS SHALL COMPLY WITH 18TH EDITION IET WIRING REGS BS7671:2018+A2:2022. INCLUDING ALL CURRENT AMENDMENTS AND GUIDANCE NOTES AND THE CURRENT BUILDING STANDARDS REGULATIONS
- THE INSTALLATION SHALL ONLY BE CERTIFIED BY A PERSON OR A COMPANY HAVING MEMBERSHIP TO S.E.L.E.C.T. OR N.I.C.E.I.C. OR SIMILAR ELECTRICAL SCHEMES
- ELECTRICAL ACCESSORY POSITIONS ARE INDICATIVE ONLY. ELECTRICAL CONTRACTOR TO REFER TO ARCHITECTS SETTING OUT DRAWINGS FOR EXACT DIMENSIONS / LOCATIONS.
- CONTRACTOR TO ALLOW FOR COORDINATION OF ALL MECHANICAL AND ELECTRICAL SERVICES THROUGHOUT.
- CONTRACTOR TO ALLOW FOR SITE COORDINATION WITH OTHER TRADE/SERVICE INSTALLATIONS.
- ALL FINAL CIRCUIT WIRING TO BE MULTICORE FLEXISHEILD TYPE.
- SOCKET / DATA OUTLETS TO BE FLUSH MOUNTED THROUGHOUT.
- SOCKET OUTLET FINISHES TBC BY INTERIOR DESIGNER.
- SOCKET OUTLETS TO ALL PLANT / STORE SPACES TO BE SURFACE MOUNTED METAL CLAD.
- ALL ELECTRICAL OUTLETS TO BE FULLY AGREED / SIGNED OFF BY INTERIOR DESIGNER PRIOR TO INSTALLATION.
- ALL CABLE / TV / DATA OUTLETS THROUGHOUT TO MATCH OUTLET FINISH WITHIN GIVEN SPACE.
- ALL FINAL WAP LOCATIONS TO BE CONFIRMED WITH AV SPECIALIST. ACCESS POINTS & ASSOCIATED POWER SERVICES TO BE CEILING MOUNTED.
- ACCESSORY PLATES WITHIN THE KITCHEN SHALL BE ENGRAVED WITH THE NAME OF EQUIPMENT SERVED (5mm BLACK LETTERING).
- THE ELECTRICAL CONTRACTOR SHALL ENSURE THAT SOCKET OUTLETS ETC. ARE NOT INSTALLED BACK TO BACK TO ENSURE THE ACOUSTIC INTEGRITY OF THE WALLS BETWEEN THEM IS MAINTAINED.
- EVERY SERVICE, FITTING AND PIECE OF EQUIPMENT IS PROVIDED SO AS TO SERVE A PURPOSE OF THE BUILDING REGULATIONS AND IS TO BE DESIGNED, INSTALLED AND COMMISSIONED IN SUCH A WAY TO FULFIL THOSE PURPOSES.
- ELECTRICAL CONTRACTOR TO ALLOW FOR INSTALLING, TESTING & COMMISSIONING OF ALL ACCESSORIES. THEN REMOVAL TO ALLOW FOR FINAL DECORATION.
- POWER SUPPLIES FOR ALL MECHANICAL PLANT ARE SUBJECT TO CHANGE, REFER TO MECHANICAL LAYOUTS FOR DETAILS.
- THIS DRAWING DOES NOT REMOVE THE CONTRACTORS RESPONSIBILITY TO:
 - PRODUCE THEIR OWN WORKING DRAWINGS.
 - TAKE ALL SITE DIMENSIONS AS REQUIRED.
 - COORDINATE WITH OTHER SERVICES AND THE BUILDING STRUCTURE



NEW SMALL POWER & DATA LEGEND

ALL NEW ELECTRICAL ELEMENTS NOTED AS NEW & COLOURED BLUE

NEW SINGLE SWITCHED SOCKET OUTLET

NEW TWIN SWITCHED SOCKET OUTLET

NEW USB SOCKET OUTLET c/w TWIN USB PORT

NEW IP IP66 RATED EXTERNAL SOCKET OUTLET

NEW UNSWITCHED FUSED CONNECTION UNIT (OPTIONAL PILOT LIGHT)

NEW SWITCHED FUSED CONNECTION UNIT (OPTIONAL PILOT LIGHT)

NEW 3 COMPARTMENT FLOORBOX c/w 2 No. TWIN 13A SOCKET OUTLETS & 2 No. TWIN DATA OUTLETS

NEW 1 COMPARTMENT FLOORBOX c/w TWIN SOCKET OUTLET

T TELEPHONE POINT

2 TWIN DATA OUTLET

PANELBOARD

DISTRIBUTION BOARD

INT NEW IP BASED INTERCOM SYSTEM TO BE INSTALLED WITH NEW POLISHED BRASS FINISHED EXTERNAL UNIT AND INTERNAL RECEIVING POINTS INSTALLED TO THE DESK OF THE RECEPTION AND LIBRARY.

SP ELECTRICAL CONTRACTOR TO CHASE WALL TO HIGH LEVEL AND INSTALL 2x25mm CABLE CONDUIT TO BELOW FLOOR TO ALLOW SPEAKER CABLING TO BE INSTALLED BY AV SPECIALIST

ABBREVIATIONS

CV CEILING VOID

LL LOW LEVEL

ML MID LEVEL

HL HIGH LEVEL

PO2	UPDATED TENDER ISSUE	PS	AJ	AJ	16.12.24
PO1	TENDER ISSUE	VK	AJ	AJ	05.09.23
REV	DESCRIPTION	BY	CHK	APP	DATE

Project Status:
LBC SUBMISSION

The Multi-disciplinary Engineering Consultancy

h HARLEY HADDOW

Unit A2, Hatchers Yard, 9 Tanner Street
London, SE1 3LE
T 44 (0) 203 735 5060
E london@harleyhaddow.com
Edinburgh | Glasgow | London | Manchester
harleyhaddow.com
Association for Consultancy and Engineering Member Firm

Project: 310311

GERMAN HISTORICAL INSTITUTE
17 BLOOMSBURY SQUARE

Drawing Title:
BASEMENT FLOOR PROPOSED SMALL POWER & DATA LAYOUT

Scale @ A1	Date	Engineer
1:50	JUNE 2023	AJ

Drawing No.	Revision
310311-HAH-XX-B1-D-E-06210	P02