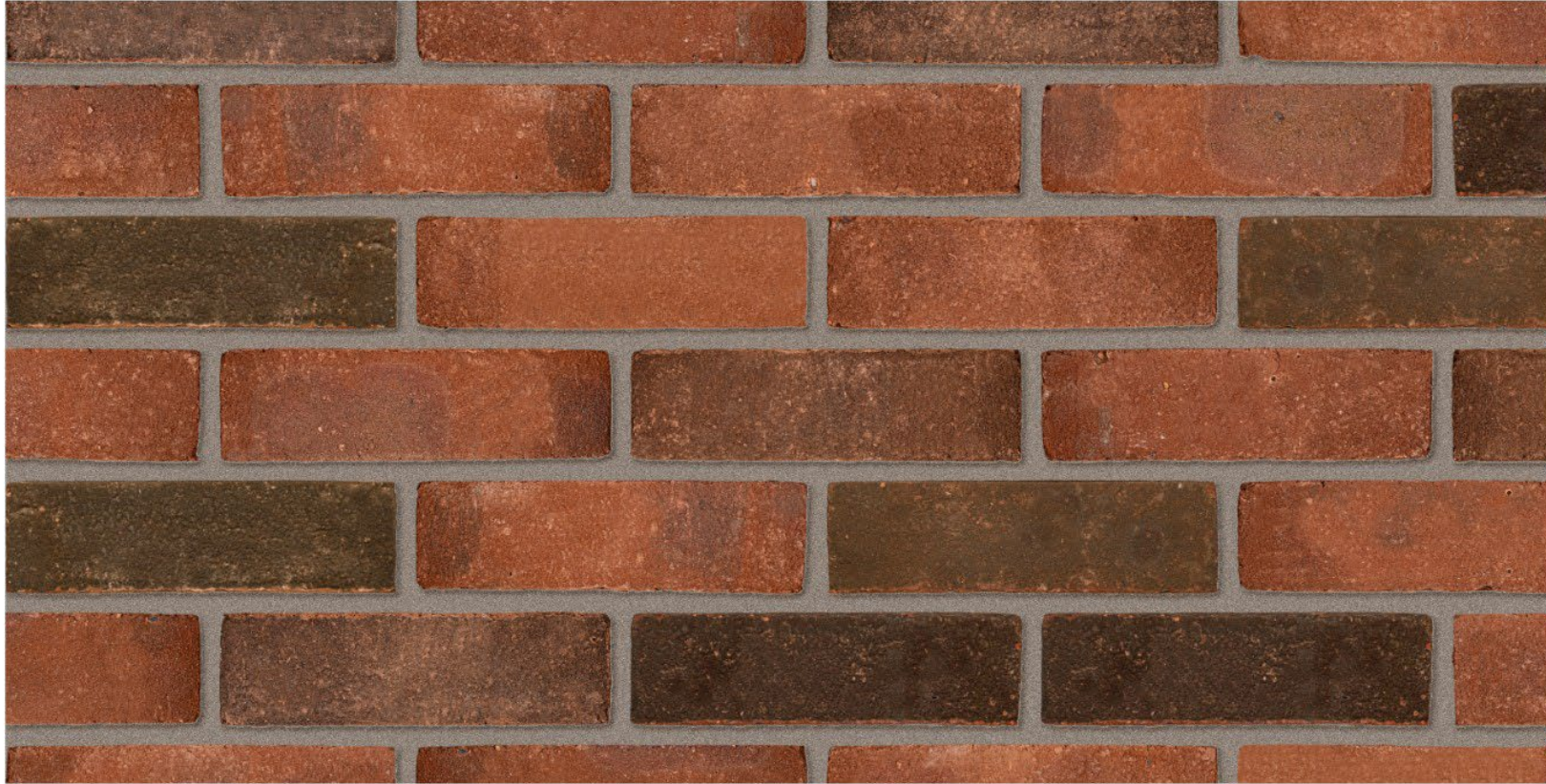


1-3 Ferdinand Place Materials- Bricks



<https://www.wienerberger.co.uk/product-range/bricks/ashington-red-multi.html> - 6-3-2025

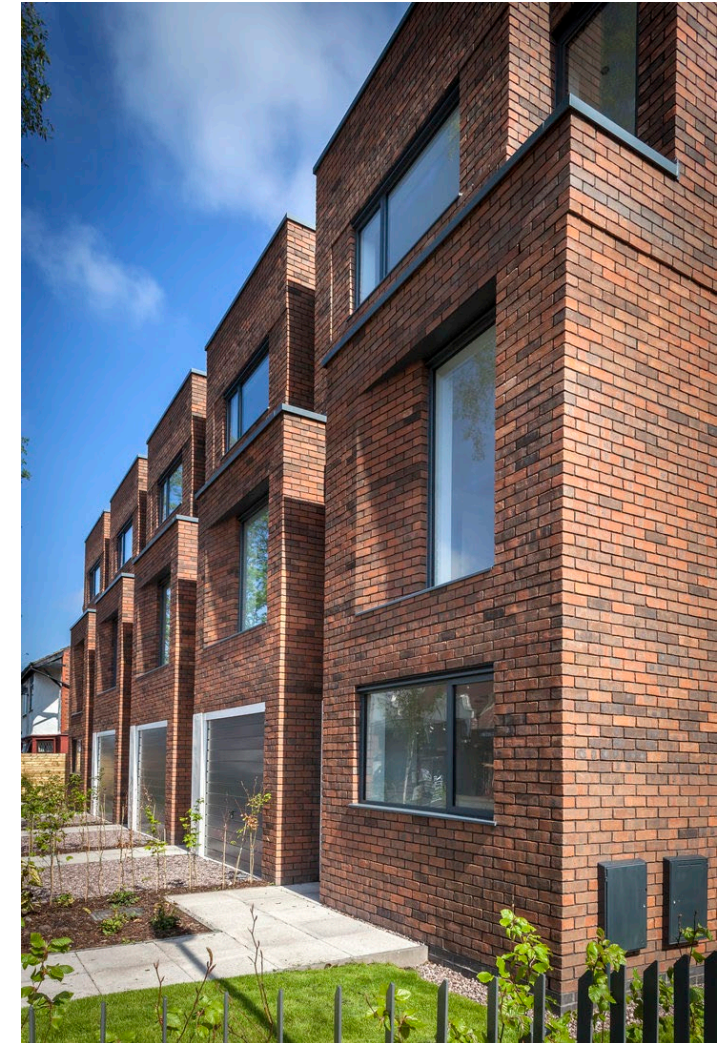


Ashington Red Multi
Stretcher bond
Bed joint/butt joint: 10.0 mm / 10.0 mm
Joint colour: 9701 Brown Grey
Format: EF

WienerbergerShowrooms

Generate texture online: 192937

The colors in this texture reflect the natural hues of our ceramic materials as best as technically possible. Wienerberger nv reserves the right to change the range and technical data. Ceramic materials may show some slight color variations per production compared to previous productions.



Ashington Red Multi

Product Technical Information Sheet

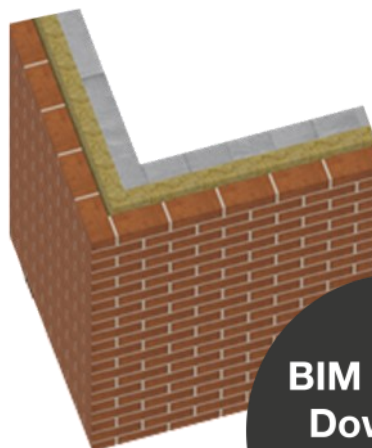
Wienerberger Code	24240070
Production Plant	Todhills
Manufacture	Soft Mud Moulded Stock
Configuration	Frogged
Colour	Red Multi
Appearance	Flat
Work Size (mm)	215 x 102.5 x 65
Pack Quantity	500 No.
Individual Dry Brick Weight (kg)	2.3

Technical Properties to BS EN 771-1

Size Tolerance (Mean/Range)	T1/R1
Gross Dry Density (kg/m ³ /Tolerance)	1630(D1)
Compressive Strength (N/mm ²)	≥20
Thermal Conductivity (W/(m·K)) λ _{10,dry,unit} value (EN 1745 tabulated: S1)	P=90% 0.60
Durability Designation	F2
Water Absorption (%)	≤14
Initial Rate of Water Absorption (kg/(m ² ·min))	Min. 1.2 Max. 2.8
Active Soluble Salts	S2
Reaction to Fire	Class A1

Issue Date: 15/09/2020

Technical data correct at time of issue. Individual dry brick weights can vary and are for guidance only. Any questions regarding this data should be referred to the Wienerberger Technical Department. Due to the limitations of screen and print colour representation of product images it is advised that brick samples are viewed prior to ordering.



**BIM Objects
Download**



1-3 Ferdinand Place Materials- Bricks



<https://www.wienerberger.co.uk/product-range/bricks/staffordshire-smooth-blue-perforated-k20165p.html> - 6-3-2025



Staffordshire Smooth Blue Perforated K20165p
Stretcher bond
Bed joint/butt joint: 10.0 mm / 10.0 mm
Joint colour: 9701 Brown Grey
Format: EF



WienerbergerShowrooms

Generate texture online: 192945

The colors in this texture reflect the natural hues of our ceramic materials as best as technically possible. Wienerberger nv reserves the right to change the range and technical data. Ceramic materials may show some slight color variations per production compared to previous productions.



Staffordshire Smooth Blue Perforated

Product Technical Information Sheet

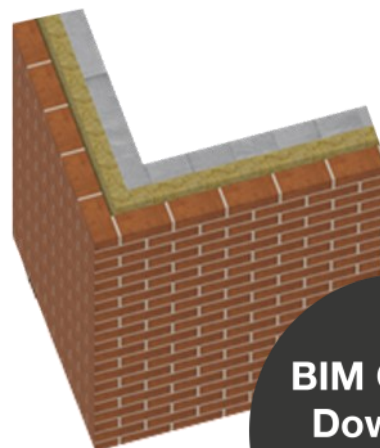
Wienerberger Code	24331020 (K201)
Production Plant	Kingsbury
Manufacture	Extruded/Wirecut
Configuration	Perforated
Colour	Blue
Appearance	Smooth
Work Size (mm)	215 x 102.5 x 65
Pack Quantity	400 No.
Individual Dry Brick Weight (kg)	2.6

Technical Properties to BS EN 771-1

Size Tolerance (Mean/Range)	T2/R1
Gross Dry Density (kg/m ³ /Tolerance)	1800 (D1)
Compressive Strength (N/mm ²)	≥75
Thermal Conductivity (W/(m·K)) λ _{10,dry,unit} value (EN 1745 tabulated: S1)	P=90% 0.84
Durability Designation	F2
Water Absorption (%)	≤7
Initial Rate of Water Absorption (kg/(m ² ·min))	Min. 0.0 Max. 0.5
Active Soluble Salts	S2
Reaction to Fire	Class A1

Issue Date: 07/09/2020

Technical data correct at time of issue. Individual dry brick weights can vary and are for guidance only. Any questions regarding this data should be referred to the Wienerberger Technical Department. Due to the limitations of screen and print colour representation of product images it is advised that brick samples are viewed prior to ordering.



**BIM Objects
Download**



1-3 Ferdinand Place Materials- Windows / Doors

Frame IC

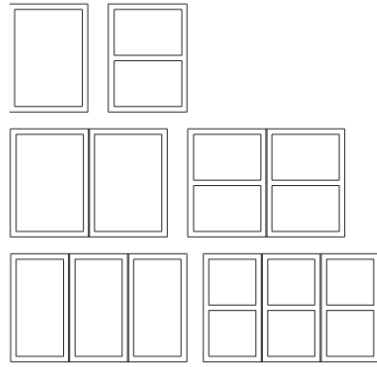
Frame I

Nation IC

Nation I

Futura+

Side Hung



Use

Side hung windows are used in all types of building and are the most traditional opening method. The side hung opening is the most practical choice for fire escape windows.

Function

Side hung windows are pivoted from the jamb using butt hinges. The window is fitted with a handle that operates a multi locking point espagnolette and has a night vent position. The handle also operates a friction brake to hold

the sash open in any position, up to 90°. The handle operated brake can not be expected to hold the window in strong or gusty winds.

A floating mullion is available on windows used in pairs for maximum opening widths, the master leaf is operated by a handle and the slave leaf is held by flush bolts.

300mm handle height can be offered.

Frame IC

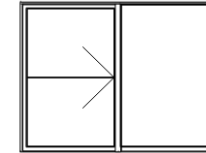
Frame I

Nation IC

Nation I

Futura+

IC Sliding Door with low threshold



Use

Sliding doors with low threshold are primarily used for access to terraces, patios, balconies and other places where low level access is required.

Function

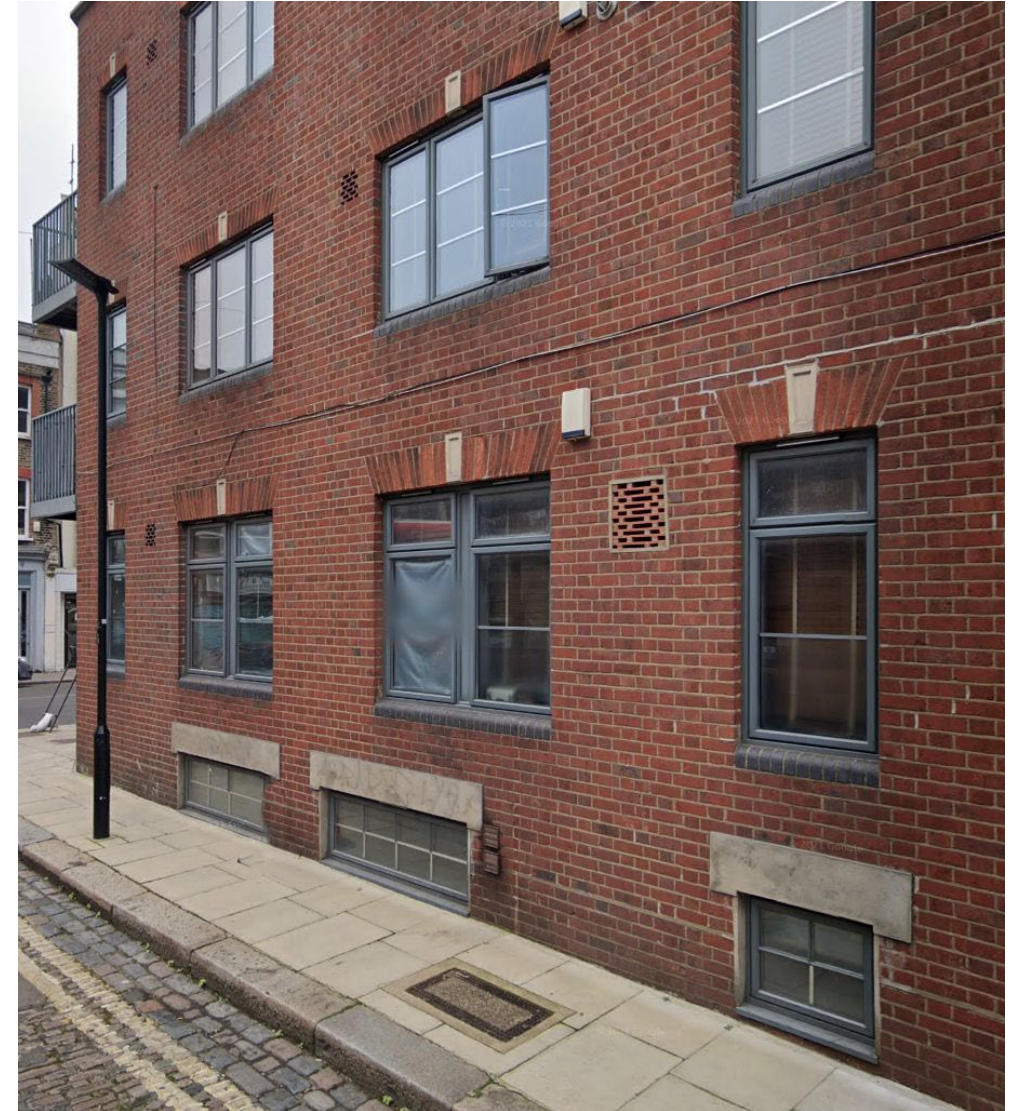
The sliding door consists of a fixed and a moving (sliding) part. The sliding part of the door always runs on the outside of the fixed light. To open the door, press safety button on the handle and turn 180° to release it from the frame - the sliding part will protrude 8mm out from the frame and slide across the fixed light. Provided with Randi Line pull handle externally.

An end stop is located at the top track, preventing the door from opening too far.

1-3 Ferdinand Place Materials- Windows / Doors



Neighbour Building_10 Ferdinand Place Materials- Red Brick, Light Grey Window / Door Frames



Neighbour Building_2 Ferdinand Place Materials- London Stock Yellow Brick, Light Grey Window / Door Frames

