

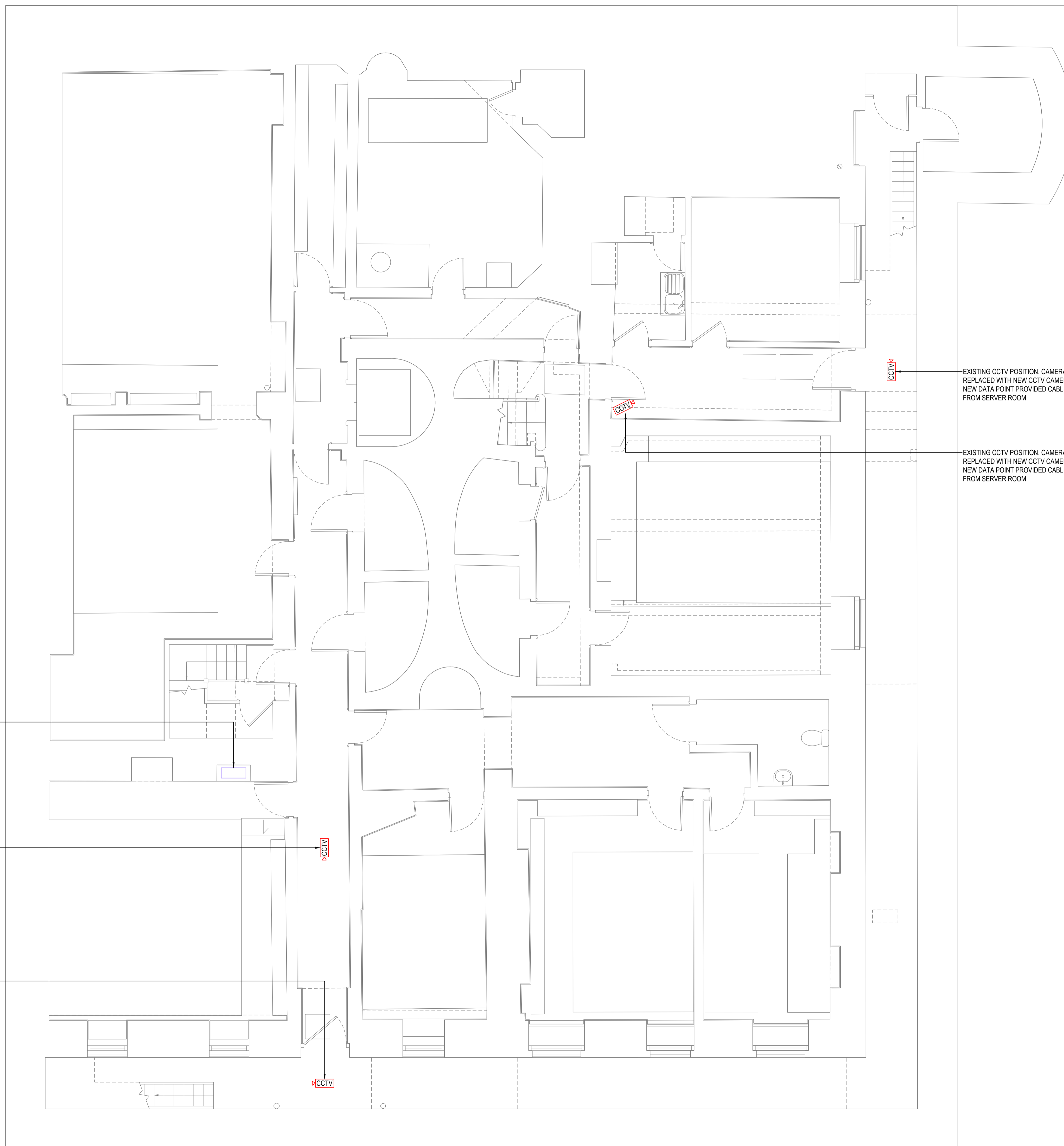
THIS DRAWING IS INDICATIVE AND REPRESENTS ONLY THE DESIGN INTENT. THE CONTRACTOR MUST PRODUCE FULLY CO-ORDINATED WORKING / INSTALLATION DRAWINGS AS REFERRED TO IN THE CONTRACT DOCUMENTATION

SECURITY NOTES

- DO NOT SCALE FROM THIS DRAWING. ALL DIMENSIONS INDICATED ARE IN MILLIMETRES
- DRAWING TO BE READ IN CONJUNCTION WITH SPECIFICATION, DOCUMENTATION, DRAWINGS & ALL RELEVANT BRITISH STANDARD DOCUMENTS
- ALL ELECTRICAL WORKS SHALL COMPLY WITH 18TH EDITION IET WIRING REGS BS7671:2018+A2:2022. INCLUDING ALL CURRENT AMENDMENTS AND GUIDANCE NOTES AND THE CURRENT BUILDING STANDARDS REGULATIONS
- THE INSTALLATION SHALL ONLY BE CERTIFIED BY A PERSON OR A COMPANY HAVING MEMBERSHIP TO S.E.L.E.C.T. OR N.I.C.E.I.C. OR SIMILAR ELECTRICAL SCHEMES
- DUAL TECH DETECTORS TO INCORPORATE PASSIVE INFRA RED AND MICROWAVE TECHNOLOGY TO OFFER CONFIRMED/ VERIFIED ALARM STATUS
- ALL PIR DETECTORS SHALL BE ANGLED / POSITIONED TO ENSURE FULL COVERAGE TO THE GIVEN SPACE. FINAL LOCATIONS TO BE AGREED WITH ARCHITECT PRIOR TO INSTALLATION
- DO NOT DRILL OR NOTCH ANY ORIGINAL JOISTS UNLESS CLEARLY INDICATED ON THE ARCHITECTS DRAWINGS
- ALL CAMERAS PAINTED TO MATCH THEIR BACKGROUNDS

SECURITY LEGEND

- INT EXTERNAL IP VIDEO INTERCOM UNIT
- IR IP VIDEO INTERCOM RECEPTION POINT
- DH DOOR HOLD OPENS WITH ASSOCIATED WIRELESS INTERFACE UNIT FROM THE FIRE ALARM SYSTEM TO RELEASE UPON FIRE ALARM
- CCTV EXISTING CCTV POSITION. CAMERA TO BE REPLACED WITH NEW CCTV CAMERA AND NEW DATA POINT PROVIDED. CABLED FROM SERVER ROOM
- CCTV EXISTING CCTV POSITION. CAMERA TO BE REPLACED WITH NEW CCTV CAMERA. EXISTING DATA POINT TO REMAIN
- CCTV NEW CCTV POSITION AND NEW DATA POINT PROVIDED. CABLED FROM SERVER ROOM
- CCTV CCTV CAMERA TO BE REMOVED



EXISTING DATA SWITCH LOCATED HERE TO REMAIN. CURRENTLY FEEDS THE ONLY CCTV CAMERAS THAT OPERATE OVER IP.
ETHERNET CABLES RUNNING FROM THIS SWITCH TO THE EXISTING CAMERAS ALSO TO BE RETAINED

EXISTING CCTV POSITION. CAMERA TO BE REPLACED WITH NEW CCTV CAMERA & NEW DATA POINT PROVIDED CABLED FROM SERVER ROOM

EXISTING CCTV POSITION. CAMERA TO BE REPLACED WITH NEW CCTV CAMERA & NEW DATA POINT PROVIDED CABLED FROM SERVER ROOM

EXISTING CCTV POSITION. CAMERA TO BE REPLACED WITH NEW CCTV CAMERA & NEW DATA POINT PROVIDED CABLED FROM SERVER ROOM

EXISTING CCTV POSITION. CAMERA TO BE REPLACED WITH NEW CCTV CAMERA & NEW DATA POINT PROVIDED CABLED FROM SERVER ROOM

PO2	PROJECT NOTES UPDATED	PS	YA	AJ	24.02.25
PO1	PRELIMINARY ISSUE	TD	AJ	AJ	13.12.24
REV	DESCRIPTION	BY	CHK	APP	DATE

Project Status: **PRELIMINARY**

h HARLEY HADDOW
The Multi-disciplinary Engineering Consultancy
Unit A2, Hatchers Yard, 9 Tanner Street
London, SE1 3LE
T 44 (0) 203 735 5060
E london@harleyhaddow.com
Edinburgh | Glasgow | London | Manchester
harleyhaddow.com
Association for Consultancy and Engineering Member Firm

Project: 310311
GERMAN HISTORICAL INSTITUTE
17 BLOOMSBURY SQUARE

Drawing Title:
BASEMENT FLOOR PROPOSED SECURITY LAYOUT

Scale @ A1	Date	Engineer
1:50	DEC 2024	AJ
Drawing No.	Revision	
310311-HAH-XX-B1-D-E-06810	P02	

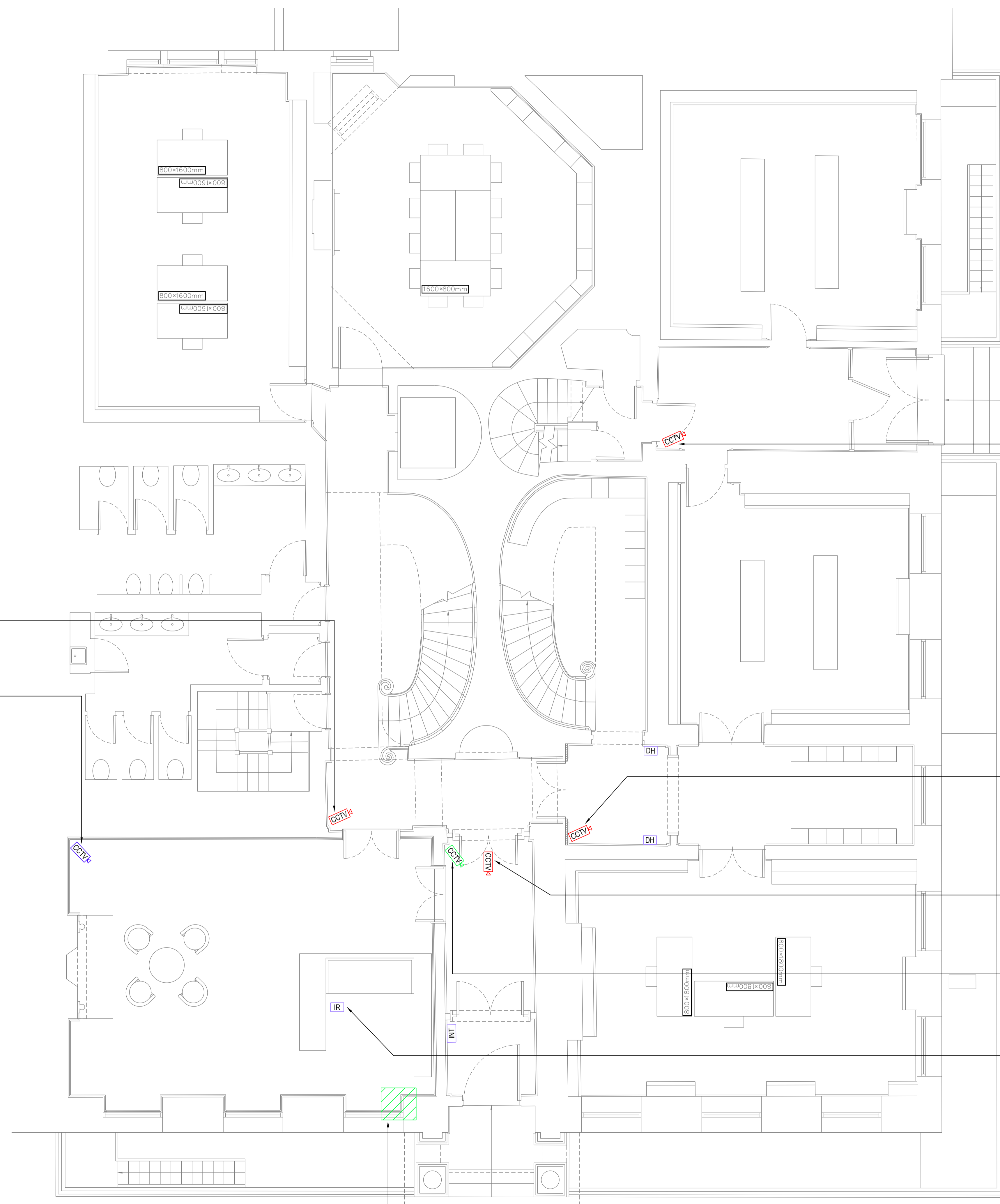
THIS DRAWING IS INDICATIVE AND REPRESENTS ONLY THE DESIGN INTENT. THE CONTRACTOR MUST PRODUCE FULLY CO-ORDINATED WORKING / INSTALLATION DRAWINGS AS REFERRED TO IN THE CONTRACT DOCUMENTATION

SECURITY NOTES

- DO NOT SCALE FROM THIS DRAWING. ALL DIMENSIONS INDICATED ARE IN MILLIMETRES
- DRAWING TO BE READ IN CONJUNCTION WITH SPECIFICATION, DOCUMENTATION, DRAWINGS & ALL RELEVANT BRITISH STANDARD DOCUMENTS
- ALL ELECTRICAL WORKS SHALL COMPLY WITH 18TH EDITION IET WIRING REGS BS7671:2018+A2:2022. INCLUDING ALL CURRENT AMENDMENTS AND GUIDANCE NOTES AND THE CURRENT BUILDING STANDARDS REGULATIONS
- THE INSTALLATION SHALL ONLY BE CERTIFIED BY A PERSON OR A COMPANY HAVING MEMBERSHIP TO S.E.L.E.C.T. OR N.I.C.E.I.C. OR SIMILAR ELECTRICAL SCHEMES
- DUAL TECH DETECTORS TO INCORPORATE PASSIVE INFRA RED AND MICROWAVE TECHNOLOGY TO OFFER CONFIRMED/ VERIFIED ALARM STATUS
- ALL PIR DETECTORS SHALL BE ANGLED / POSITIONED TO ENSURE FULL COVERAGE TO THE GIVEN SPACE. FINAL LOCATIONS TO BE AGREED WITH ARCHITECT PRIOR TO INSTALLATION
- DO NOT DRILL OR NOTCH ANY ORIGINAL JOISTS UNLESS CLEARLY INDICATED ON THE ARCHITECTS DRAWINGS
- ALL CAMERAS PAINTED TO MATCH THEIR BACKGROUNDS

SECURITY LEGEND

- INT EXTERNAL IP VIDEO INTERCOM UNIT
- IR IP VIDEO INTERCOM RECEPTION POINT
- DH DOOR HOLD OPENS WITH ASSOCIATED WIRELESS INTERFACE UNIT FROM THE FIRE ALARM SYSTEM TO RELEASE UPON FIRE ALARM
- CCTV EXISTING CCTV POSITION. CAMERA TO BE REPLACED WITH NEW CCTV CAMERA AND NEW DATA POINT PROVIDED. CABLED FROM SERVER ROOM
- CCTV EXISTING CCTV POSITION. CAMERA TO BE REPLACED WITH NEW CCTV CAMERA. EXISTING DATA POINT TO REMAIN
- CCTV NEW CCTV POSITION AND NEW DATA POINT PROVIDED. CABLED FROM SERVER ROOM
- CCTV CAMERA TO BE REMOVED



EXISTING CCTV POSITION. CAMERA TO BE REPLACED WITH NEW CCTV CAMERA AND NEW DATA POINT PROVIDED. CABLED FROM SERVER ROOM

NEW CCTV POSITION AND NEW DATA POINT PROVIDED. CABLED FROM SERVER ROOM

EXISTING CCTV POSITION. CAMERA TO BE REPLACED WITH NEW CCTV CAMERA AND NEW DATA POINT PROVIDED. CABLED FROM SERVER ROOM

EXISTING CCTV POSITION. CAMERA TO BE REPLACED WITH NEW CCTV CAMERA AND NEW DATA POINT PROVIDED. CABLED FROM SERVER ROOM

EXISTING CCTV POSITION. CAMERA TO BE REPLACED WITH NEW CCTV CAMERA AND NEW DATA POINT PROVIDED. CABLED FROM SERVER ROOM

EXISTING CCTV POSITION. CAMERA TO BE REPLACED WITH NEW CCTV CAMERA. EXISTING DATA POINT TO REMAIN

RECEPTION DESK MOUNTED INTERCOM RECEIVING POINT

EXISTING CCTV CAMERA TO BE REMOVED

PO2	PROJECT NOTES UPDATED	PS	YA	AJ	24.02.25
PO1	PRELIMINARY ISSUE	TD	AJ	AJ	13.12.24
REV	DESCRIPTION	BY	CHK	APP	DATE

Project Status: **PRELIMINARY**

The Multi-disciplinary Engineering Consultancy

h HARLEY HADDOW

Unit A2, Hatchers Yard, 9 Tanner Street
London, SE1 3LE
T 44 (0) 203 735 5060
E london@harleyhaddow.com
Edinburgh | Glasgow | London | Manchester
harleyhaddow.com
Association for Consultancy and Engineering Member Firm

Project: 310311
GERMAN HISTORICAL INSTITUTE
17 BLOOMSBURY SQUARE

Drawing Title:
GROUND FLOOR PROPOSED SECURITY LAYOUT

Scale @ A1	Date	Engineer
1:50	DEC 2024	AJ
Drawing No.	Revision	
310311-HAH-XX-00-D-E-06810	P02	

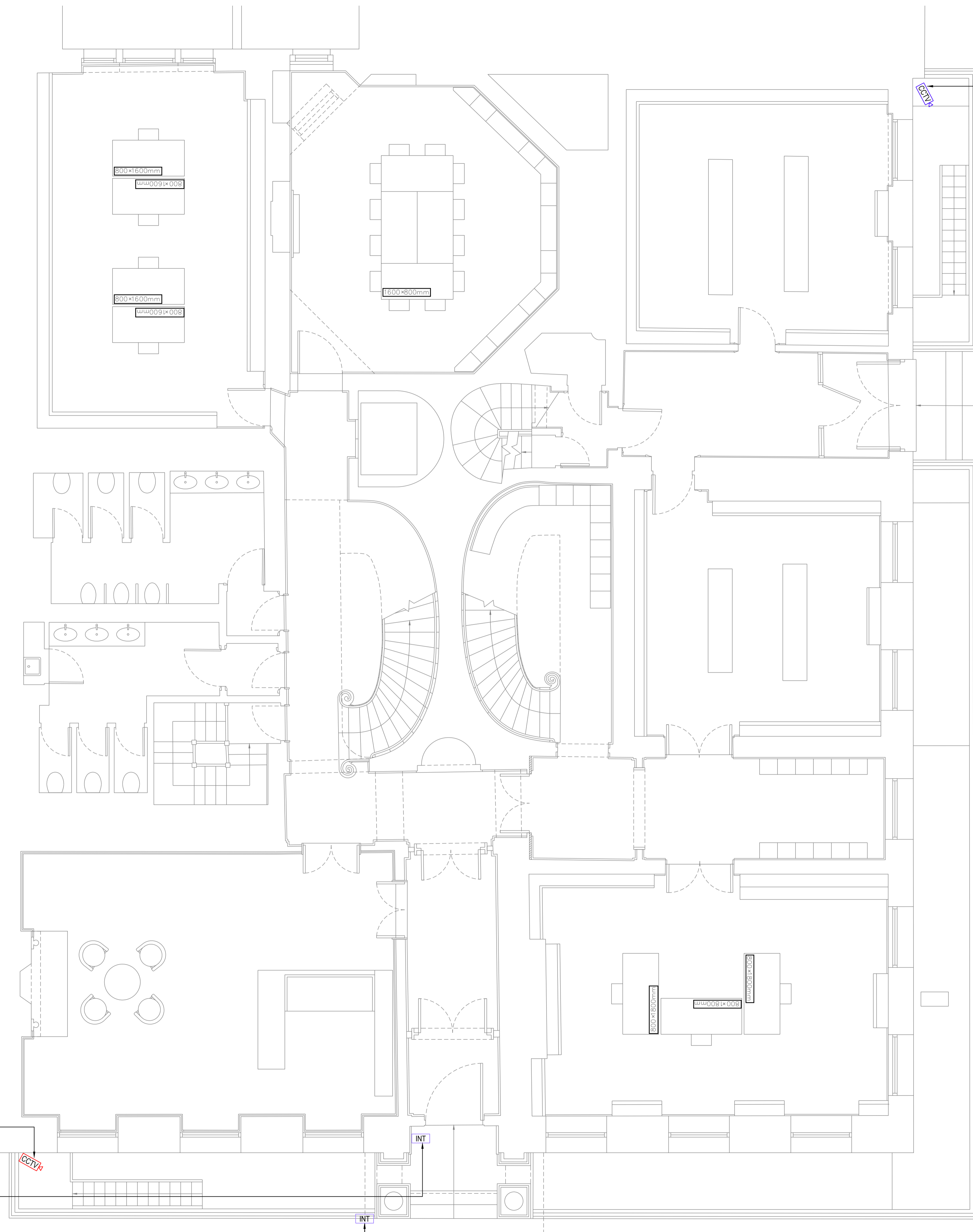
THIS DRAWING IS INDICATIVE AND REPRESENTS ONLY THE DESIGN INTENT. THE CONTRACTOR MUST PRODUCE FULLY CO-ORDINATED WORKING / INSTALLATION DRAWINGS AS REFERRED TO IN THE CONTRACT DOCUMENTATION

SECURITY NOTES

- DO NOT SCALE FROM THIS DRAWING. ALL DIMENSIONS INDICATED ARE IN MILLIMETRES
- DRAWING TO BE READ IN CONJUNCTION WITH SPECIFICATION, DOCUMENTATION, DRAWINGS & ALL RELEVANT BRITISH STANDARD DOCUMENTS
- ALL ELECTRICAL WORKS SHALL COMPLY WITH 18TH EDITION IET WIRING REGS BS7671:2018+A2:2022. INCLUDING ALL CURRENT AMENDMENTS AND GUIDANCE NOTES AND THE CURRENT BUILDING STANDARDS REGULATIONS
- THE INSTALLATION SHALL ONLY BE CERTIFIED BY A PERSON OR A COMPANY HAVING MEMBERSHIP TO S.E.L.E.C.T. OR N.I.C.E.I.C. OR SIMILAR ELECTRICAL SCHEMES
- DUAL TECH DETECTORS TO INCORPORATE PASSIVE INFRA RED AND MICROWAVE TECHNOLOGY TO OFFER CONFIRMED/ VERIFIED ALARM STATUS
- ALL PIR DETECTORS SHALL BE ANGLED / POSITIONED TO ENSURE FULL COVERAGE TO THE GIVEN SPACE. FINAL LOCATIONS TO BE AGREED WITH ARCHITECT PRIOR TO INSTALLATION
- DO NOT DRILL OR NOTCH ANY ORIGINAL JOISTS UNLESS CLEARLY INDICATED ON THE ARCHITECTS DRAWINGS
- ALL CAMERAS PAINTED TO MATCH THEIR BACKGROUNDS

SECURITY LEGEND

- INT EXTERNAL IP VIDEO INTERCOM UNIT
- IR IP VIDEO INTERCOM RECEPTION POINT
- DH DOOR HOLD OPENS WITH ASSOCIATED WIRELESS INTERFACE UNIT FROM THE FIRE ALARM SYSTEM TO RELEASE UPON FIRE ALARM
- CCTV EXISTING CCTV POSITION. CAMERA TO BE REPLACED WITH NEW CCTV CAMERA AND NEW DATA POINT PROVIDED. CABLED FROM SERVER ROOM
- CCTV EXISTING CCTV POSITION. CAMERA TO BE REPLACED WITH NEW CCTV CAMERA. EXISTING DATA POINT TO REMAIN
- CCTV NEW CCTV POSITION AND NEW DATA POINT PROVIDED. CABLED FROM SERVER ROOM
- CCTV CAMERA TO BE REMOVED



NEW DOME CCTV CAMERA AND NEW DATA POINT PROVIDED. CABLED FROM SERVER ROOM.

EXISTING CCTV ARM MOUNTED DOME CAMERA TO BE REPLACED WITH A NEW DOME CAMERA. EXISTING DATA POINT TO REMAIN.

NEW AUDIO VIDEO INTERCOM PANEL MOUNTED ON THE BUILDING BY THE MAIN ENTRANCE DOOR.

NEW AUDIO VIDEO INTERCOM PANEL MOUNTED ON THE RAILINGS AT PAVEMENT LEVEL FOR ACCESSIBILITY PURPOSES



P02	OUTDOOR CAMERA TYPE REVISION	PS	YA	AJ	24.02.25
P01	PRELIMINARY ISSUE	PS	AJ	AJ	13.12.24
REV	DESCRIPTION	BY	CHK	APP	DATE

Project Status: **PRELIMINARY**

h HARLEY HADDOW

The Multi-disciplinary Engineering Consultancy

Unit A2, Hatchers Yard, 9 Tanner Street
London, SE1 3LE
T 44 (0) 203 735 5060
E london@harleyhaddow.com
Edinburgh | Glasgow | London | Manchester
harleyhaddow.com
Association for Consultancy and Engineering Member Firm

Project: 310311
**GERMAN HISTORICAL INSTITUTE
17 BLOOMSBURY SQUARE**

Drawing Title:
FRONT FACADE SECURITY LAYOUT

Scale @ A1	Date	Engineer
1:50	DEC 2024	AJ
Drawing No.	Revision	
310311-HAH-XX-00-D-E-06811	P02	

THIS DRAWING IS INDICATIVE AND REPRESENTS ONLY THE DESIGN INTENT. THE CONTRACTOR MUST PRODUCE FULLY CO-ORDINATED WORKING / INSTALLATION DRAWINGS AS REFERRED TO IN THE CONTRACT DOCUMENTATION

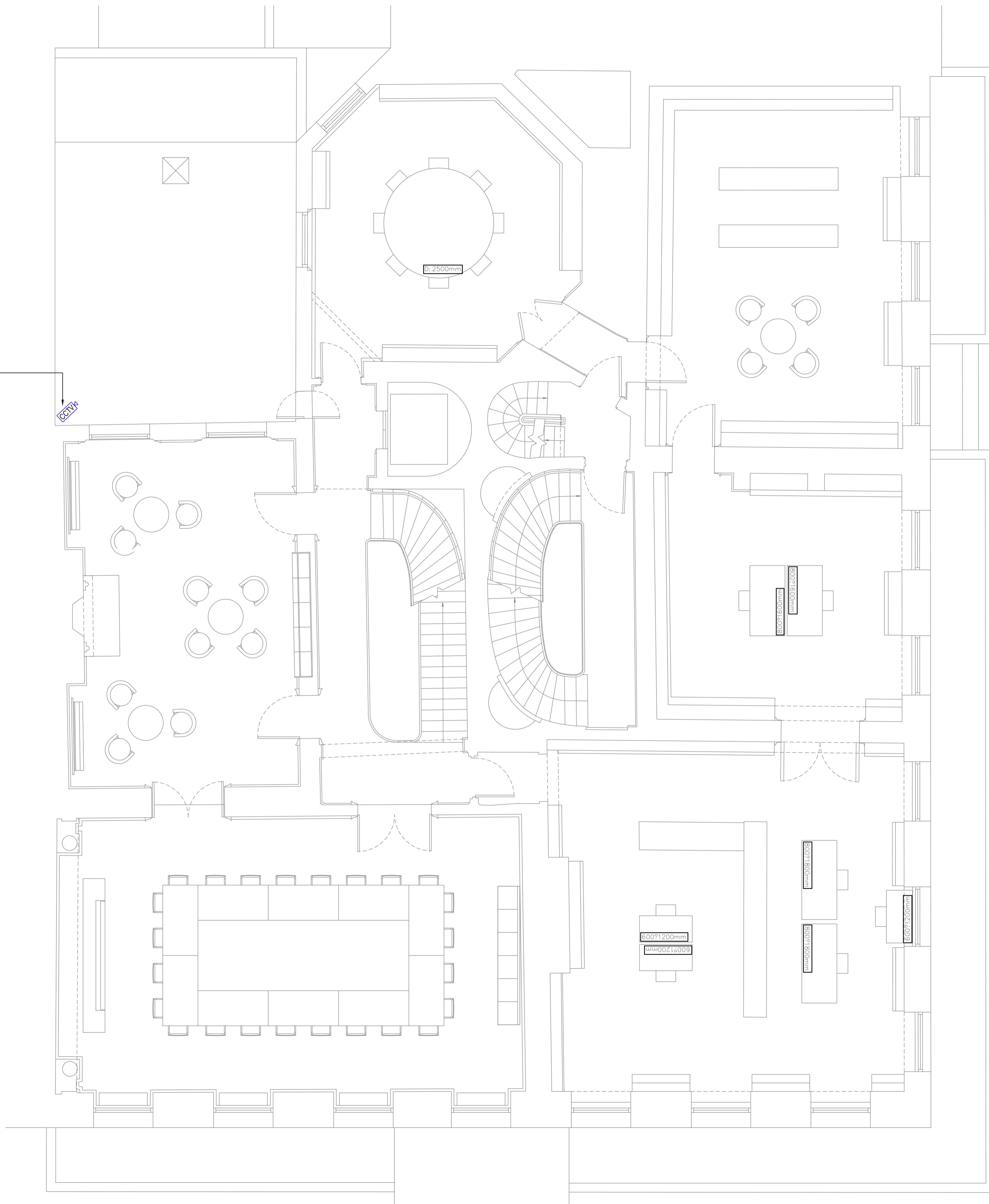
SECURITY NOTES

- DO NOT SCALE FROM THIS DRAWING. ALL DIMENSIONS INDICATED ARE IN MILLIMETRES
- DRAWING TO BE READ IN CONJUNCTION WITH SPECIFICATION, DOCUMENTATION, DRAWINGS & ALL RELEVANT BRITISH STANDARD DOCUMENTS
- ALL ELECTRICAL WORKS SHALL COMPLY WITH 18TH EDITION IET WIRING REGS BS7671:2018+A2:2022. INCLUDING ALL CURRENT AMENDMENTS AND GUIDANCE NOTES AND THE CURRENT BUILDING STANDARDS REGULATIONS
- THE INSTALLATION SHALL ONLY BE CERTIFIED BY A PERSON OR A COMPANY HAVING MEMBERSHIP TO S.E.L.E.C.T. OR N.I.C.E.I.C. OR SIMILAR ELECTRICAL SCHEMES
- DUAL TECH DETECTORS TO INCORPORATE PASSIVE INFRA RED AND MICROWAVE TECHNOLOGY TO OFFER CONFIRMED/ VERIFIED ALARM STATUS
- ALL PIR DETECTORS SHALL BE ANGLED / POSITIONED TO ENSURE FULL COVERAGE TO THE GIVEN SPACE. FINAL LOCATIONS TO BE AGREED WITH ARCHITECT PRIOR TO INSTALLATION
- DO NOT DRILL OR NOTCH ANY ORIGINAL JOISTS UNLESS CLEARLY INDICATED ON THE ARCHITECTS DRAWINGS
- ALL CAMERAS PAINTED TO MATCH THEIR BACKGROUNDS

SECURITY LEGEND

- INT EXTERNAL IP VIDEO INTERCOM UNIT
- IR IP VIDEO INTERCOM RECEPTION POINT
- DH DOOR HOLD OPENS WITH ASSOCIATED WIRELESS INTERFACE UNIT FROM THE FIRE ALARM SYSTEM TO RELEASE UPON FIRE ALARM
- CCTV¹ EXISTING CCTV POSITION. CAMERA TO BE REPLACED WITH NEW CCTV CAMERA AND NEW DATA POINT PROVIDED. CABLED FROM SERVER ROOM
- CCTV² EXISTING CCTV POSITION. CAMERA TO BE REPLACED WITH NEW CCTV CAMERA. EXISTING DATA POINT TO REMAIN
- CCTV³ NEW CCTV POSITION AND NEW DATA POINT PROVIDED. CABLED FROM SERVER ROOM
- CCTV⁴ CCTV CAMERA TO BE REMOVED

EXISTING CCTV POSITION. CAMERA TO BE REPLACED WITH NEW DOME CCTV CAMERA AND NEW DATA POINT PROVIDED. CABLED FROM SERVER ROOM.



PO2	OUTDOOR CAMERA TYPE REVISION	PS	YA	AJ	24.02.25
PO1	PRELIMINARY ISSUE	PS	AJ	AJ	13.12.24
REV	DESCRIPTION	BY	CHK	APP	DATE

Project Status: **PRELIMINARY**

The Multi-disciplinary Engineering Consultancy

h HARLEY HADDOW

Unit A2, Hatchers Yard, 9 Tanner Street
London, SE1 3LE
T 44 (0) 203 735 5060
E london@harleyhaddow.com
Edinburgh | Glasgow | London | Manchester
harleyhaddow.com
Association for Consultancy and Engineering Member Firm

Project: 310311
GERMAN HISTORICAL INSTITUTE
17 BLOOMSBURY SQUARE

Drawing Title:
FIRST FLOOR PROPOSED SECURITY LAYOUT

Scale @ A1	Date	Engineer
1:50	DEC 2024	AJ
Drawing No.	Revision	
310311-HAH-XX-01-D-E-06810	P02	

THIS DRAWING IS INDICATIVE AND REPRESENTS ONLY THE DESIGN INTENT. THE CONTRACTOR MUST PRODUCE FULLY CO-ORDINATED WORKING / INSTALLATION DRAWINGS AS REFERRED TO IN THE CONTRACT DOCUMENTATION

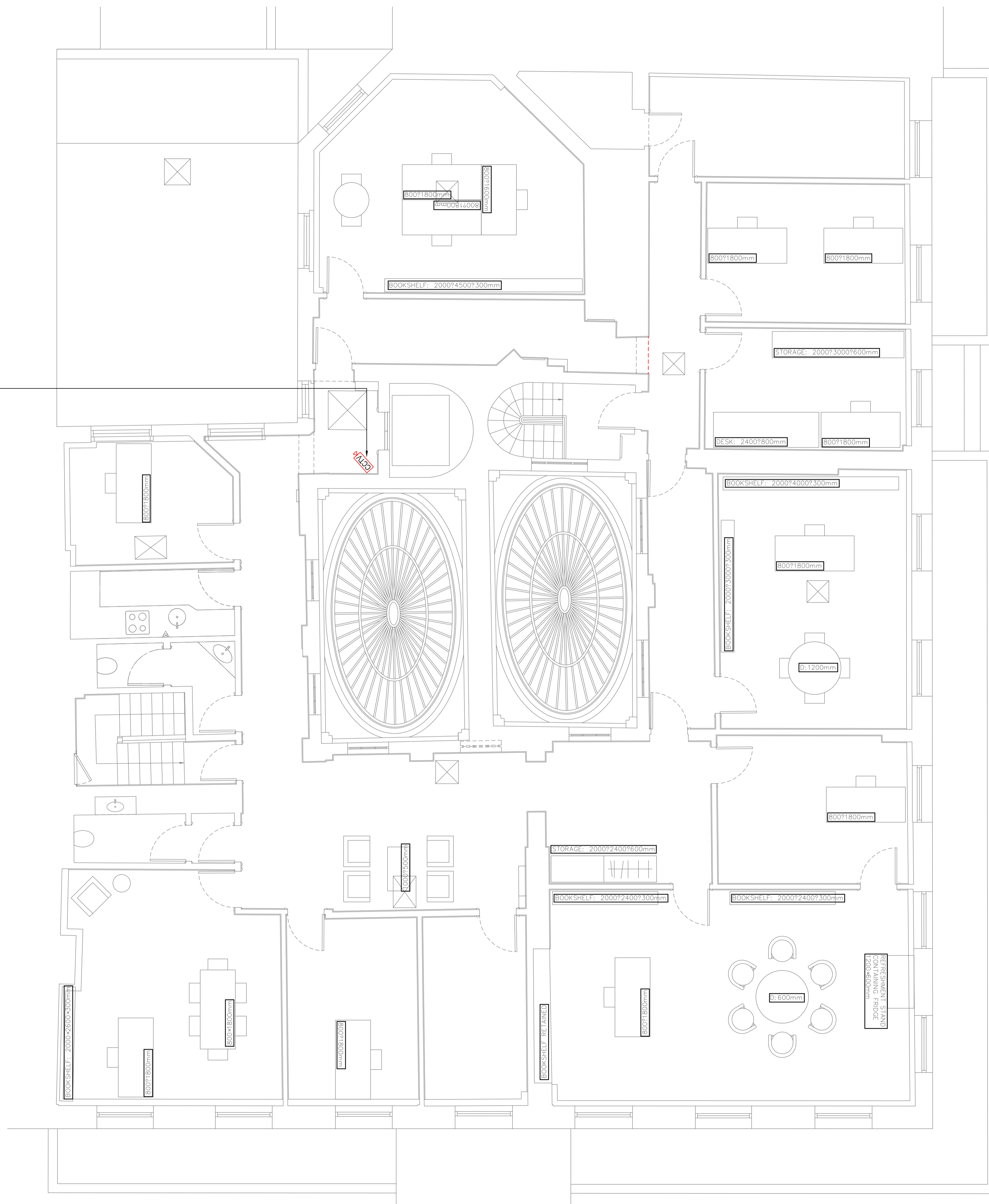
SECURITY NOTES

- DO NOT SCALE FROM THIS DRAWING. ALL DIMENSIONS INDICATED ARE IN MILLIMETRES
- DRAWING TO BE READ IN CONJUNCTION WITH SPECIFICATION, DOCUMENTATION, DRAWINGS & ALL RELEVANT BRITISH STANDARD DOCUMENTS
- ALL ELECTRICAL WORKS SHALL COMPLY WITH 18TH EDITION IET WIRING REGS BS7671:2018+A2:2022. INCLUDING ALL CURRENT AMENDMENTS AND GUIDANCE NOTES AND THE CURRENT BUILDING STANDARDS REGULATIONS
- THE INSTALLATION SHALL ONLY BE CERTIFIED BY A PERSON OR A COMPANY HAVING MEMBERSHIP TO S.E.L.E.C.T. OR N.I.C.E.I.C. OR SIMILAR ELECTRICAL SCHEMES
- DUAL TECH DETECTORS TO INCORPORATE PASSIVE INFRA RED AND MICROWAVE TECHNOLOGY TO OFFER CONFIRMED/ VERIFIED ALARM STATUS
- ALL PIR DETECTORS SHALL BE ANGLED / POSITIONED TO ENSURE FULL COVERAGE TO THE GIVEN SPACE. FINAL LOCATIONS TO BE AGREED WITH ARCHITECT PRIOR TO INSTALLATION
- DO NOT DRILL OR NOTCH ANY ORIGINAL JOISTS UNLESS CLEARLY INDICATED ON THE ARCHITECTS DRAWINGS
- ALL CAMERAS PAINTED TO MATCH THEIR BACKGROUNDS

SECURITY LEGEND

- INT EXTERNAL IP VIDEO INTERCOM UNIT
- IR IP VIDEO INTERCOM RECEPTION POINT
- DH DOOR HOLD OPENS WITH ASSOCIATED WIRELESS INTERFACE UNIT FROM THE FIRE ALARM SYSTEM TO RELEASE UPON FIRE ALARM
- CCTV EXISTING CCTV POSITION. CAMERA TO BE REPLACED WITH NEW CCTV CAMERA AND NEW DATA POINT PROVIDED. CABLED FROM SERVER ROOM
- CCTV EXISTING CCTV POSITION. CAMERA TO BE REPLACED WITH NEW CCTV CAMERA. EXISTING DATA POINT TO REMAIN
- CCTV NEW CCTV POSITION AND NEW DATA POINT PROVIDED. CABLED FROM SERVER ROOM
- CCTV CCTV CAMERA TO BE REMOVED

CCTV WITHIN LIFT MOTOR ROOM ABOVE



PO2	PROJECT NOTES UPDATED	PS	YA	AJ	24.02.25
PO1	PRELIMINARY ISSUE	PS	AJ	AJ	13.12.24
REV	DESCRIPTION	BY	CHK	APP	DATE

Project Status: **PRELIMINARY**

The Multi-disciplinary Engineering Consultancy

h
HARLEY HADDOW

Unit A2, Hatchers Yard, 9 Tanner Street
London, SE1 3LE
T 44 (0) 203 735 5060
E london@harleyhaddow.com
Edinburgh | Glasgow | London | Manchester
harleyhaddow.com
Association for Consultancy and Engineering Member Firm

Project: 310311
GERMAN HISTORICAL INSTITUTE
17 BLOOMSBURY SQUARE

Drawing Title:
THIRD FLOOR PROPOSED SECURITY LAYOUT

Scale @ A1	Date	Engineer
1:50	DEC 2024	AJ
Drawing No.	Revision	
310311-HAH-XX-03-D-E-06810	P02	