

KEY

Site Boundary

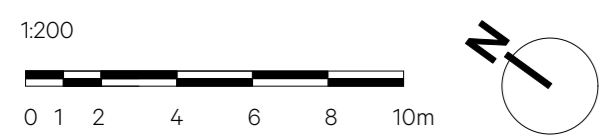
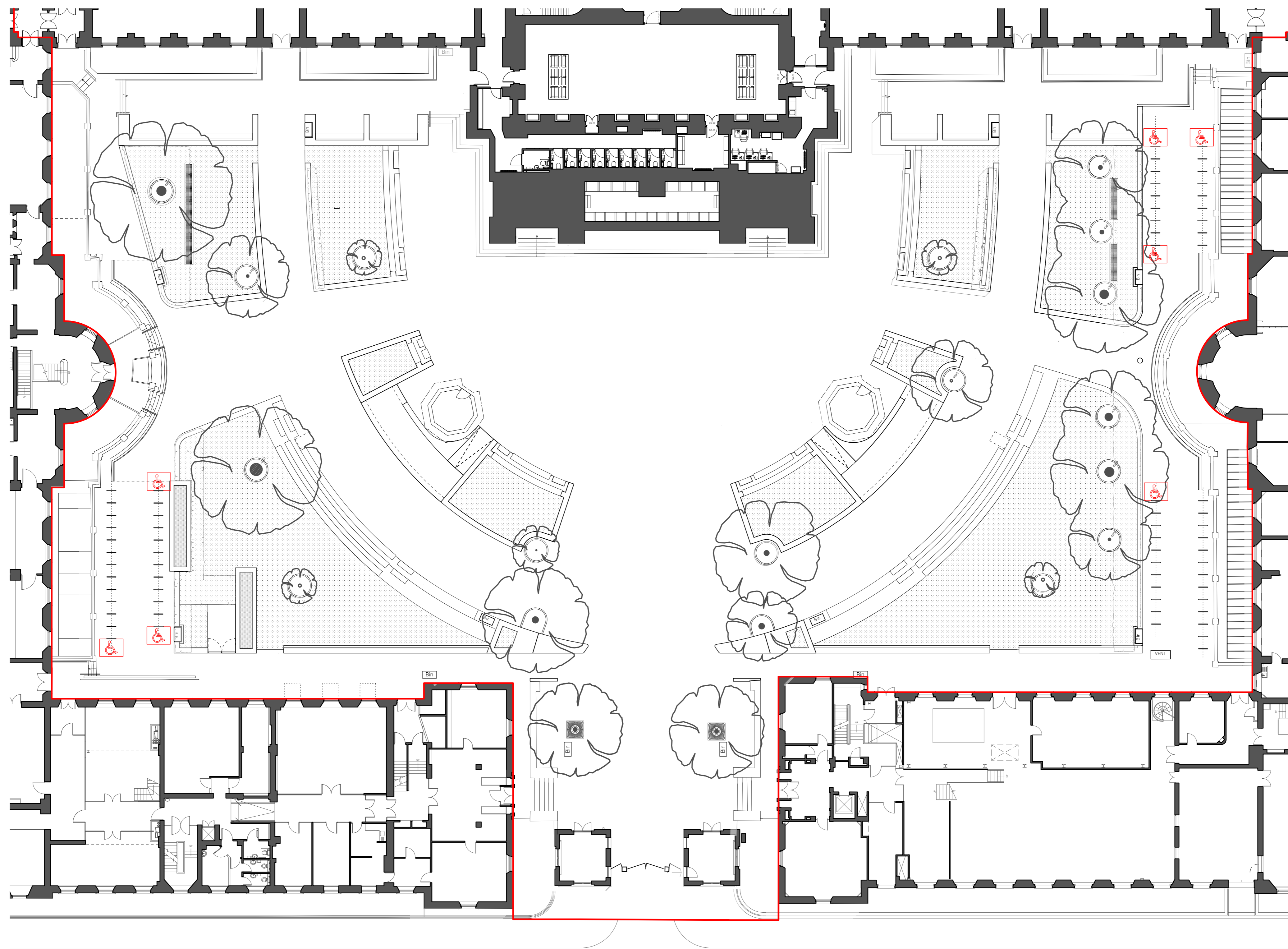
Cycle Strategy Key

Total Cycle Parking Spaces = 134

Cycle Stands (2 cycles per stand)

Accessible Cycle Spaces: 7 no.

Size for Accessible Cycle Space set out in 'Wheels for Well being Guidance'
Enlarged Bay: W - 1500mm x L - 2000mm



Date	Revision	Reviewed by	Issue Notes
25/07/2024	P5	GW	ISSUED FOR PLANNING
26/02/2025	P6	YF	REVISED PLANNING: RETAINED TREES; 3 NO. ADDITIONAL EXISTING TREES RETAINED; PLANTER, GROUND LEVELS AND ARRANGEMENT AMENDED TO SUIT; ACCESSIBLE PARKING SPACES RELOCATED; 4 NO. TOTAL NEW TREES; 2 NO. LIGHTING COLUMNS RELOCATED TO ACCOMMODATE RETAINED TREES.

NO DIMENSIONS ARE TO BE SCALED FROM THIS DRAWING. THE CONTRACTOR/MANUFACTURER IS RESPONSIBLE FOR CHECKING ALL DIMENSIONS AND QUERING ANY DISCREPANCIES. THIS DRAWING IS THE PROPERTY OF BURWELL ARCHITECTS LTD. COPYRIGHT IS RESERVED BY THEM AND THE DRAWING IS ISSUED ON CONDITION THAT IT IS NOT COPIED, REPRODUCED, RETAINED OR DISCLOSED TO ANY UNAUTHORISED PERSON, EITHER WHOLLY OR IN PART, WITHOUT WRITTEN CONSENT.

Project Title	Project Director	Project No.	Client
UCL Bi-Centennial Main Quad & Wilkins	NB	979	UCL London, WC1E 6BT
Sheet Title	Drawn By	Scale	Design Firm
Cycle Strategy	GW	1:200 @ A1	Unit 001 California Building Deals Gateway London SE13 7SB 020 8305 6010
	Date	CAD File Name	info@burwellarchitects.com
	19/03/2024	979-G-0040 Series Main Quad GA Plan.vwx	www.burwellarchitects.com
	Revision	Sheet No.	
	P6	979-G-0049	

Client	UCL London, WC1E 6BT
Design Firm	Unit 001 California Building Deals Gateway London SE13 7SB 020 8305 6010
	info@burwellarchitects.com
	www.burwellarchitects.com

Burwell Architects