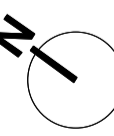
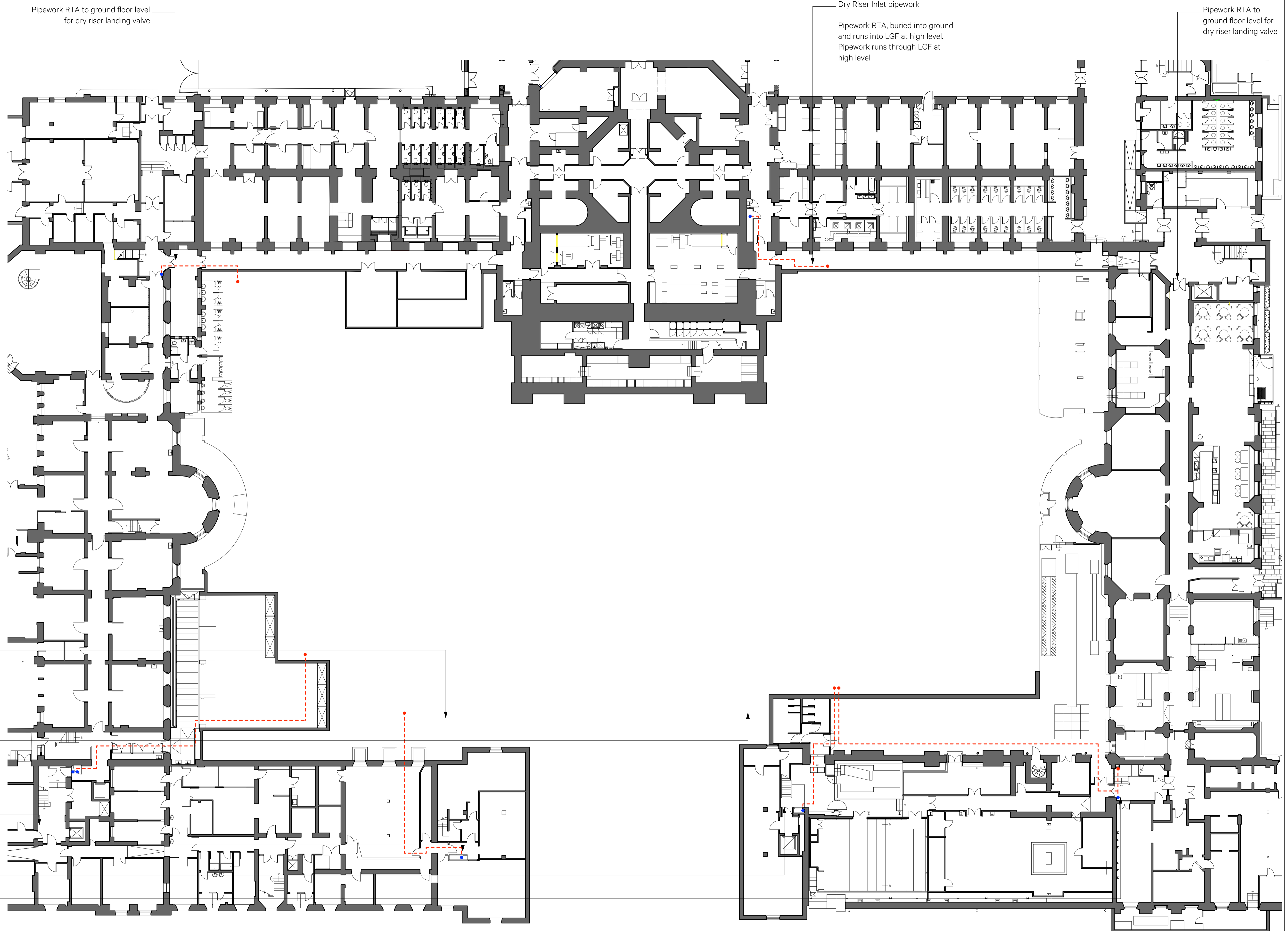


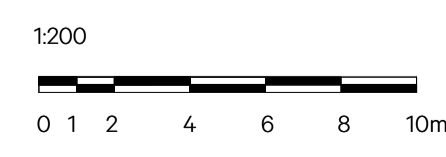
Dry Riser Strategy - Key

- - - - - High level pipework
- Pipework rises to above (RTA) to GF level
- Dry riser landing valve

Routes of pipework shown on drawing are indicative, final routes to be confirmed on site.



Date	Revision	Reviewed by	Issue Notes
19/07/2024	P1	GW	Preliminary Issue
23/07/2024	P2	GW	ISSUED FOR PLANNING - DRAFT
25/07/2024	P3	GW	ISSUED FOR PLANNING
28/02/2025	P6	CR	REVISED PLANNING: PIPEWORK ROUTES AMENDED.



NO DIMENSIONS ARE TO BE SCALED FROM THIS DRAWING. THE CONTRACTOR/MANUFACTURER IS RESPONSIBLE FOR CHECKING ALL DIMENSIONS AND QUERING ANY DISCREPANCIES. THIS DRAWING IS THE PROPERTY OF BURWELL ARCHITECTS LTD. COPYRIGHT IS RESERVED BY THEM AND THE DRAWING IS ISSUED ON CONDITION THAT IT IS NOT COPIED, REPRODUCED, RETAINED OR DISCLOSED TO ANY UNAUTHORISED PERSON, EITHER WHOLLY OR IN PART, WITHOUT WRITTEN CONSENT.

Project Title	UCL Bi-Centennial Main Quad & Wilkins		Client	UCL London, WC1E 6BT	
Project Director	NB	Project No.	979		
Drawn By	GW	Scale	1:200 @ A1		
Sheet Title	Dry Riser Strategy - Lower Ground Floor Lower Ground Floor		Design Firm	Unit 001 California Building Deals Gateway London SE13 7SB 020 8305 6010	
Date	19/03/2024	CAD File Name	979-G-0040 Series Main Quad GA Plan.vwx		
Revision	P6	Sheet No.	979-G-0047		
			info@burwellarchitects.com www.burwellarchitects.com		

