

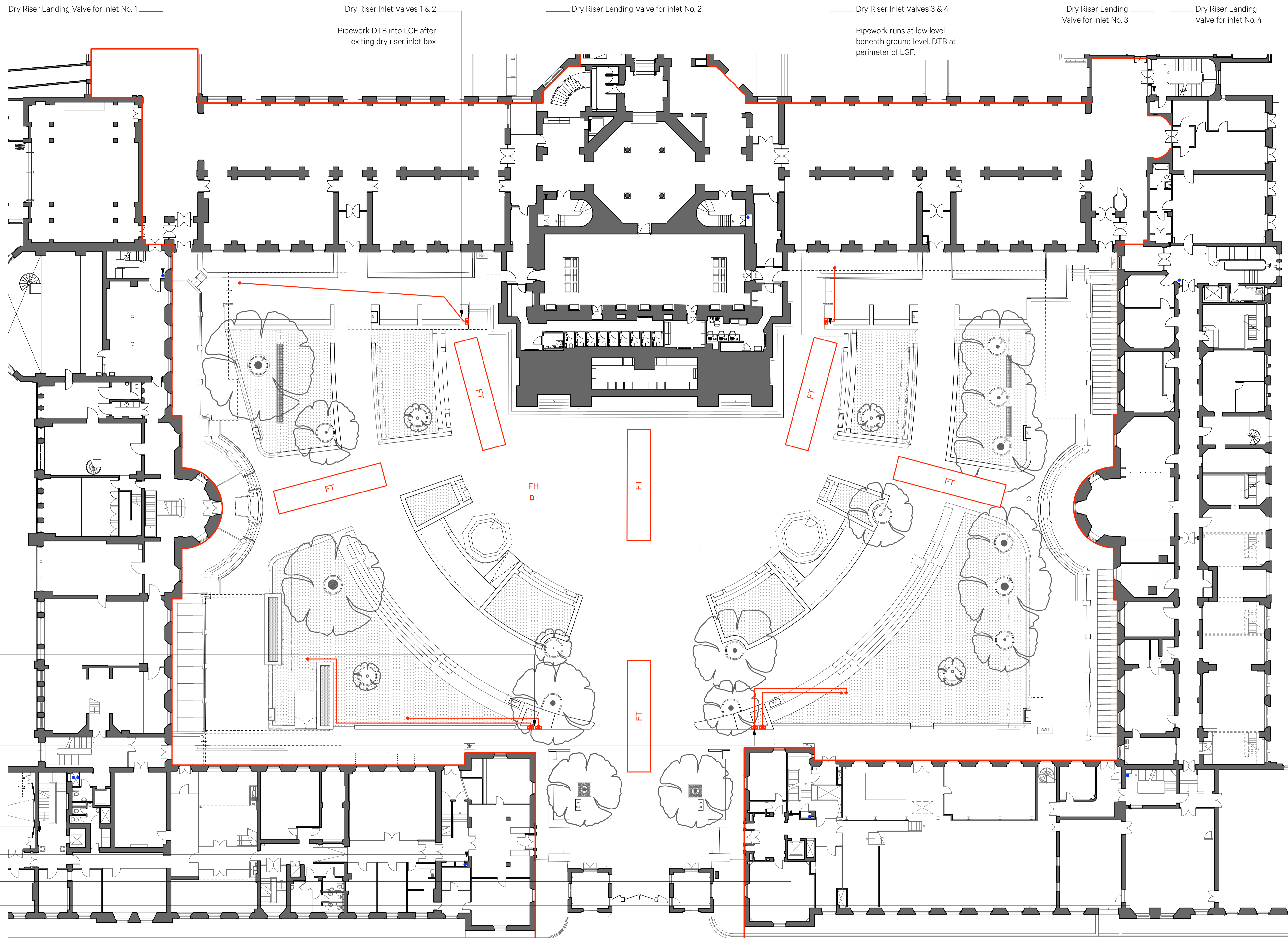
**KEY**

Site Boundary

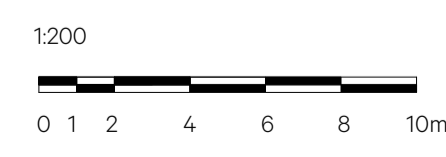
**Dry Riser Strategy Key**

- Required Fire tender locations
- Pipework below ground level
- Pipework drops to below (DTB) to LGF
- Dry riser landing valve

**Routes of pipework shown on drawing are indicative, final routes to be confirmed on site.**



Date	Revision	Reviewed by	Issue Notes
26/02/2025	P7	YF	REVISED PLANNING; RETAINED TREES; 3 NO. ADDITIONAL EXISTING TREES RETAINED; PLANTER, GROUND LEVELS AND ARRANGEMENT AMENDED TO SUIT; ACCESSIBLE PARKING SPACES RELOCATED; 4 NO. TOTAL NEW TREES; 2 NO. LIGHTING COLUMNS RELOCATED TO ACCOMMODATE RETAINED TREES.
28/02/2025	P8	CR	REVISED PLANNING; RETAINED TREES; 3 NO. ADDITIONAL EXISTING TREES RETAINED; PLANTER, GROUND LEVELS AND ARRANGEMENT AMENDED TO SUIT; ACCESSIBLE PARKING SPACES RELOCATED; 4 NO. TOTAL NEW TREES; 2 NO. LIGHTING COLUMNS RELOCATED TO ACCOMMODATE RETAINED TREES. DRY RISER INLETS AND PIPEWORK ROUTES AMENDED.



NO DIMENSIONS ARE TO BE SCALED FROM THIS DRAWING. THE CONTRACTOR/MANUFACTURER IS RESPONSIBLE FOR CHECKING ALL DIMENSIONS AND QUERING ANY DISCREPANCIES. THIS DRAWING IS THE PROPERTY OF BURWELL ARCHITECTS LTD. COPYRIGHT IS RESERVED BY THEM AND THE DRAWING IS ISSUED ON CONDITION THAT IT IS NOT COPIED, REPRODUCED, RETAINED OR DISCLOSED TO ANY UNAUTHORISED PERSON, EITHER WHOLLY OR IN PART, WITHOUT WRITTEN CONSENT.

Project Title <b>UCL Bi-Centennial Main Quad &amp; Wilkins</b>	Project Director NB	Project No. 979	Client UCL London, WC1E 6BT
Sheet Title <b>Dry Riser Strategy - Ground Floor</b>	Drawn By GW	Scale 1:200 @ A1	Design Firm Unit 001 California Building Deals Gateway London SE13 7SB 020 8305 6010 info@burwellarchitects.com www.burwellarchitects.com
	Date 19/03/2024	CAD File Name 979-G-0040 Series Main Quad GA Plan.vwx	
	Revision P8	Sheet No. 979-G-0046	

