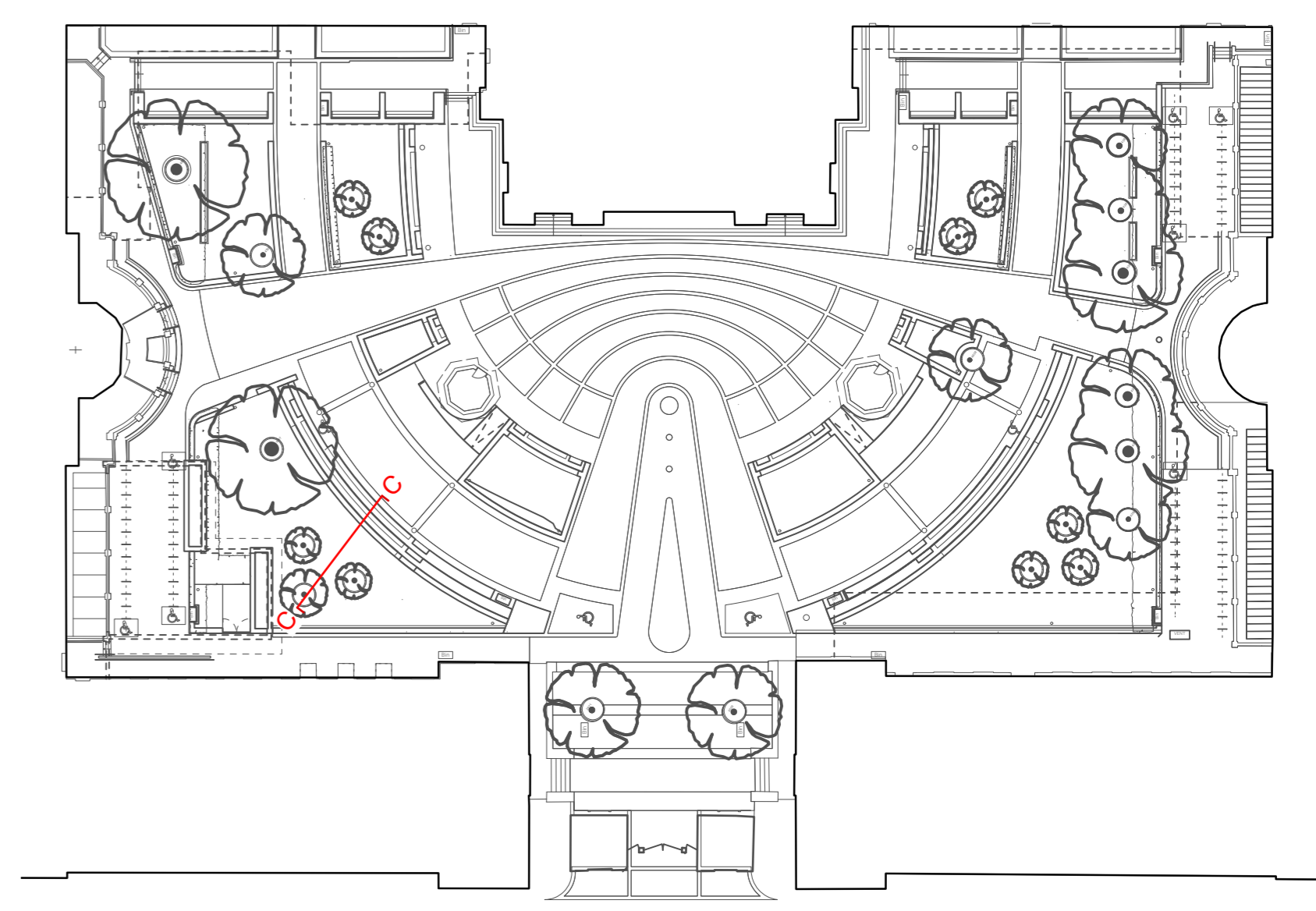


Key Plan



Existing Tulp tree transposed to new location

Vertical log pile

Tree Ring

Biodiverse grass lawn, with low-fertility sandy loam, free draining

Gravel border with metal edge trim

Seating pad - pre-cast wet cast stone - accent colour to match accent colour ground stone finish

Recessed LED Strip light

Pre-cast wet cast stone - Portland stone colour

28,150

27,850

27,700

27,550

27,400

FFL - Min/Max - 27,035 - 27,300

1 Outer Ring Seating - Section C-C
Scale: 120 @ A1

Date	Revision	Reviewed by	Issue Notes
23/07/2024	P1	GW	ISSUED FOR PLANNING - DRAFT
25/07/2024	P2	GW	ISSUED FOR PLANNING

NO DIMENSIONS ARE TO BE SCALED FROM THIS DRAWING. THE CONTRACTOR/MANUFACTURER IS RESPONSIBLE FOR CHECKING ALL DIMENSIONS AND QUERING ANY DISCREPANCIES. THIS DRAWING IS THE PROPERTY OF BURWELL ARCHITECTS LTD. COPYRIGHT IS RESERVED BY THEM AND THE DRAWING IS ISSUED ON CONDITION THAT IT IS NOT COPIED, REPRODUCED, RETAINED OR DISCLOSED TO ANY UNAUTHORISED PERSON, EITHER WHOLLY OR IN PART, WITHOUT WRITTEN CONSENT.

Project Title	UCL Bi-centennial Main Quad & Wilkins	Project Director	NB	Project No.	979
Sheet Title	Typical Planter Sections 2 of 5	Drawn By	GW	Scale	1:20 @ A1
		Date	05/04/2024	CAD File Name	979_A_0120 Series - Step, Wall & Planter Details.vwx
		Revision	P2	Sheet No.	979_A_0112

Client	UCL London, WC1E 6BT
Design Firm	Unit 001 California Building Deals Gateway London SE13 7SB 020 8305 6010 info@burwellarchitects.com www.burwellarchitects.com

