

# UCL Bicentennial Projects: Main Quad

Planning & Listed Building Consent Document: Revised Trees Addendum

1014 | Revision A | 28th February 2025



Burwell Architects

# 1.0 Introduction

---



Photographs of Additional Four Existing Trees to be Retained within Proposed Amended Scheme

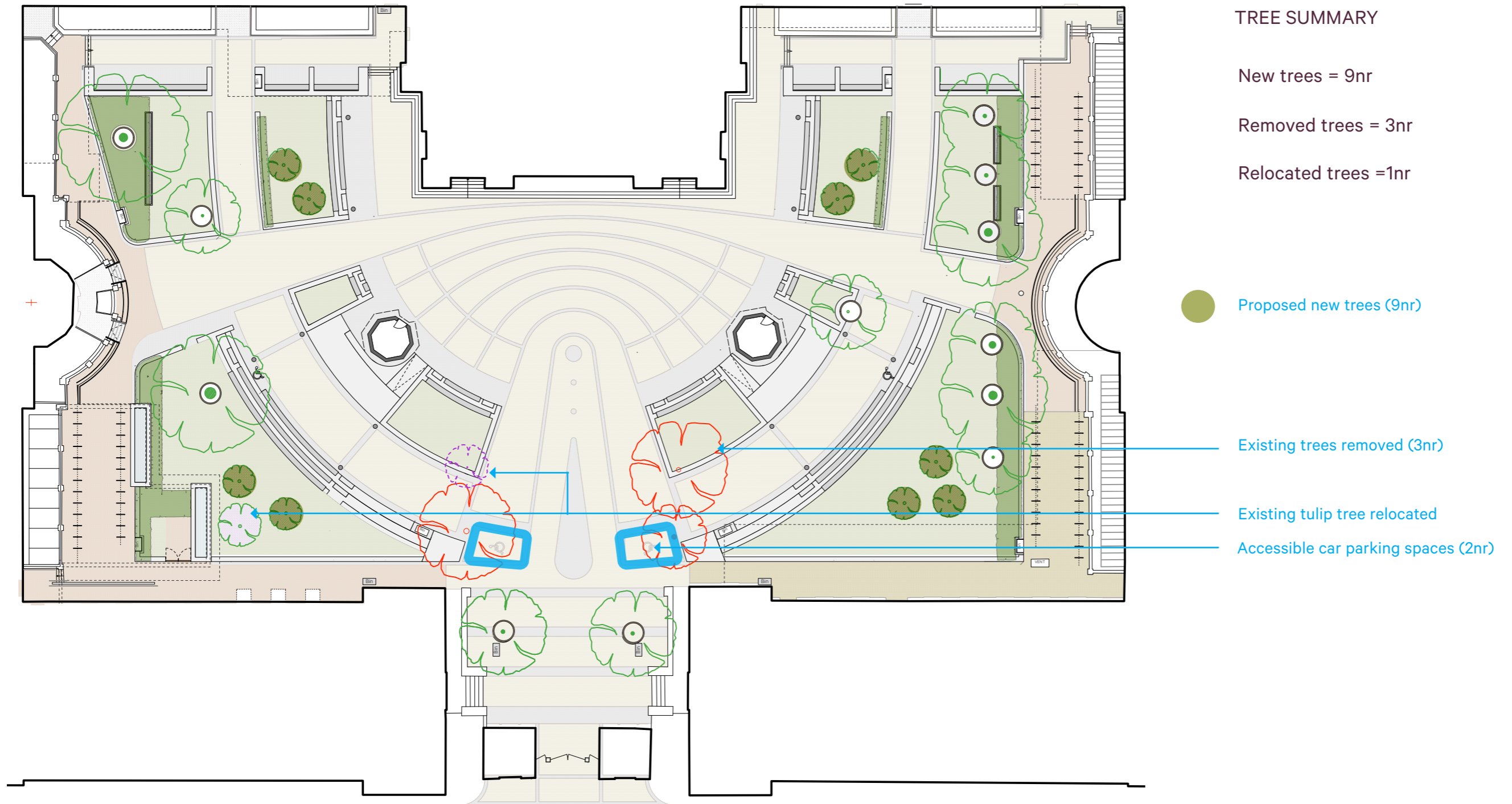
This document has been prepared in support of a S73 application and an S19 application to amend the consented planning application 2024/3177/P and consented Listed Building Consent application 2024/3192/L respectively. The purpose of the document is to describe the proposed amendments, which relate to the retention of 4nr existing trees and a change to the provision of new trees (from 9nr to 4nr), along with associated localised changes to the landscape and planter levels and arrangement to facilitate this (including the relocation of the 2nr accessible car parking spaces within the scheme). The retention of the trees requires the relocation of 2nr lighting columns along with the relocation of lighting to 2nr of the trees.

In addition, the application picks up an amendment to the dry riser routes within the landscape and into the buildings.

The proposed amendments are described on the following pages of this document and are to be read alongside the supporting drawings and documents submitted as part of this application.

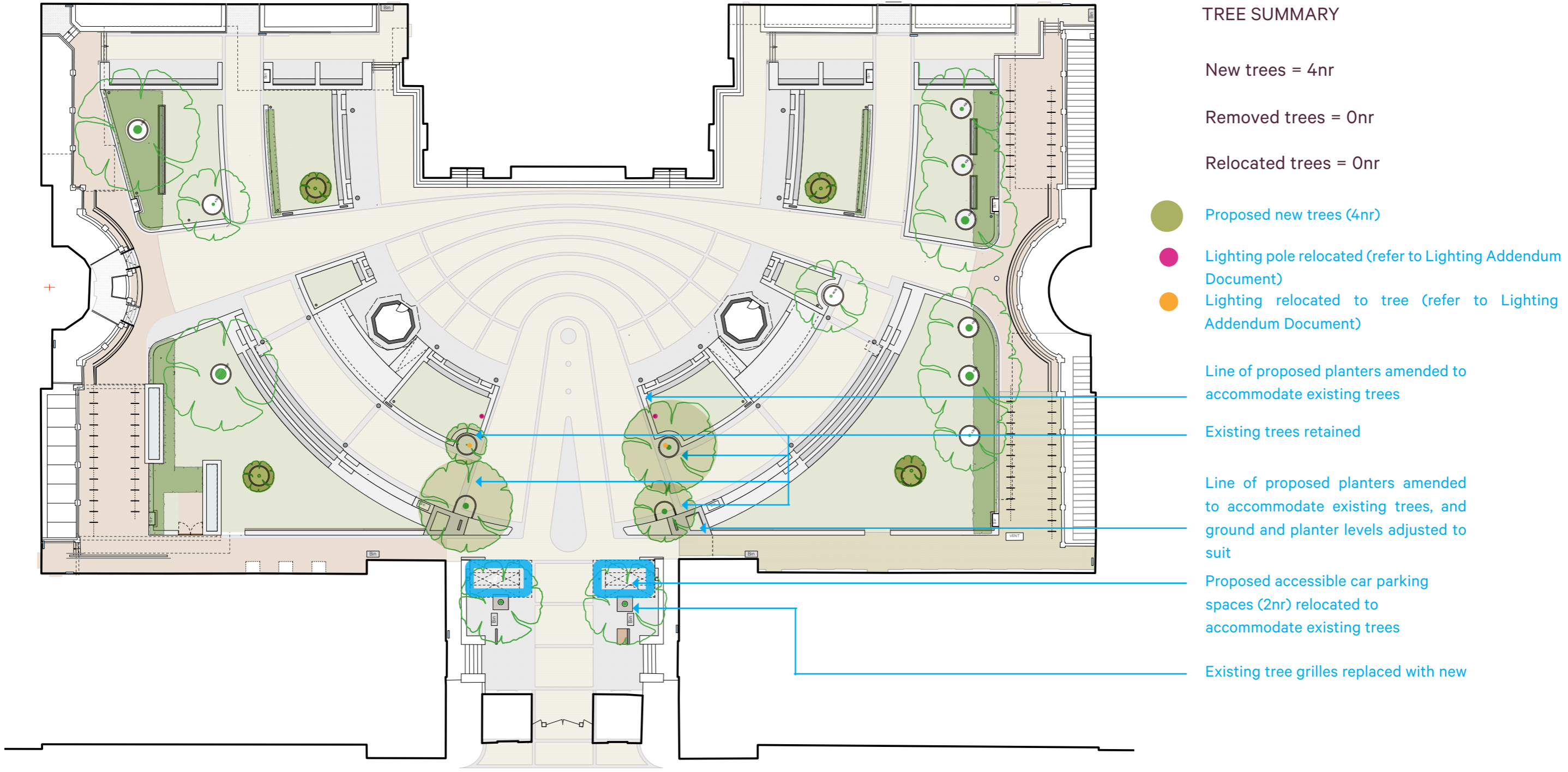
# 2.0 Consented Layout

The previously consented layout is shown below.



# 3.0 Proposed Amended Layout

The below layout highlights the proposed amendments to the scheme.



**TREE SUMMARY**

New trees = 4nr

Removed trees = 0nr

Relocated trees = 0nr

- Proposed new trees (4nr)
- Lighting pole relocated (refer to Lighting Addendum Document)
- Lighting relocated to tree (refer to Lighting Addendum Document)

Line of proposed planters amended to accommodate existing trees

Existing trees retained

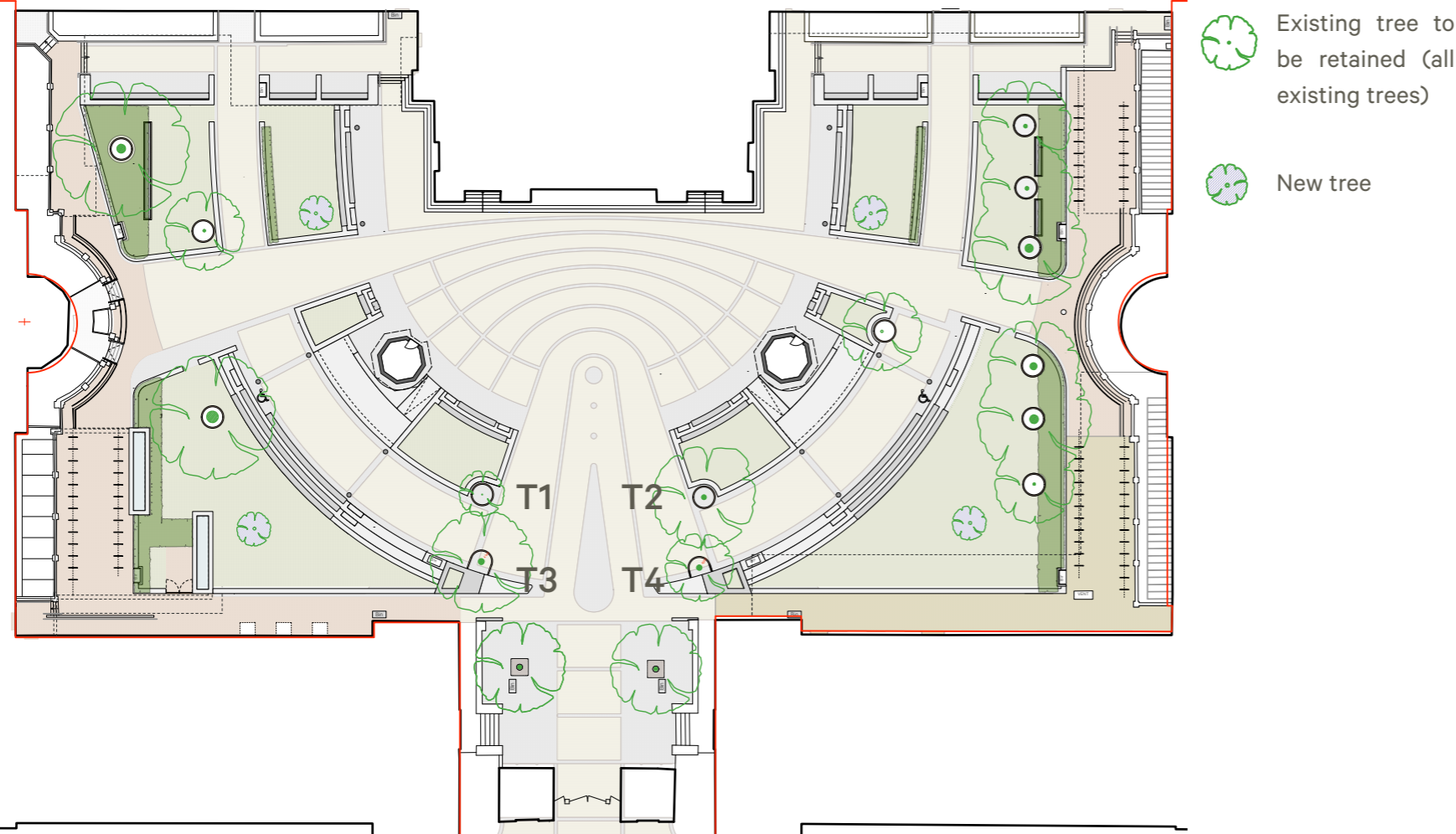
Line of proposed planters amended to accommodate existing trees, and ground and planter levels adjusted to suit

Proposed accessible car parking spaces (2nr) relocated to accommodate existing trees

Existing tree grilles replaced with new

# 4.0 Proposed Layout: Trees

Retaining and integrating the existing trees...



The revised proposed layout retains all of the existing trees including a small Tulip tree (T1 on the adjacent diagram), which was previously proposed to be relocated within the site, and 3nr Ginkgo trees, (T2, T3 and T4 on the adjacent diagram), which were previously proposed to be removed.

An Arboricultural Impact Assessment and Method Statement, which includes guidance on protection measures for the existing trees, has been submitted as part of this application.

Revised Proposed Main Quad Arrangement Showing Existing and New Trees



T1: Existing Tulip Tree:



T2: Existing Ginkgo Tree



T3: Existing Ginkgo Tree

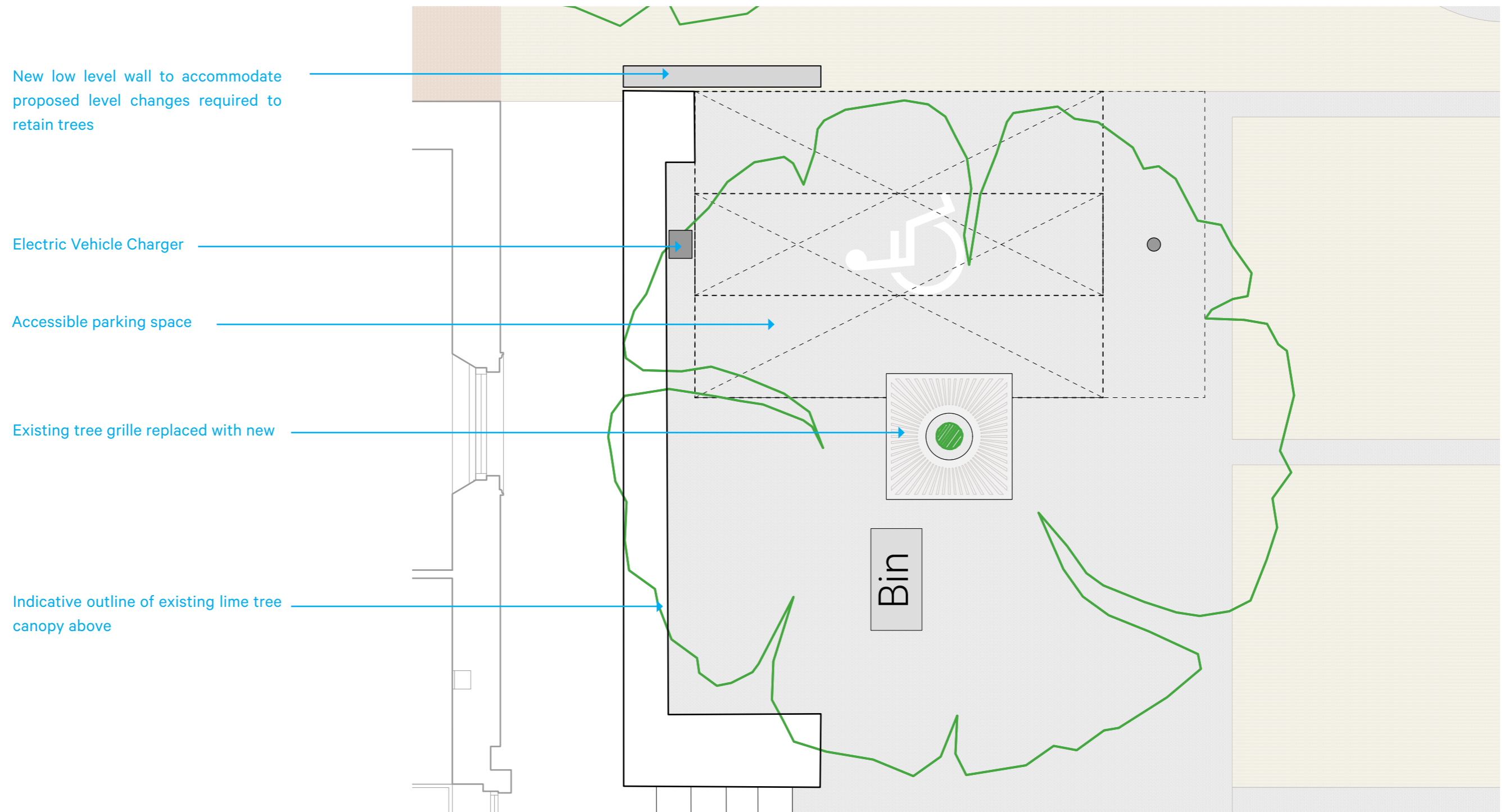


T4: Existing Ginkgo Tree

...and planting new trees

# 5.0 Accessible Parking Spaces

The below detailed layout shows the revised accessible car parking arrangement (for the parking space on the north of the entrance).



Detailed Layout Showing Accessible Car Parking Space

