

Design Intent Pack

Swiss Cottage - 149346

External Signage

APPROVED - XX/XX/24

121 Finchley Road, Swiss
Cottage, London, NW3 6HY



Contacts

Project Manager:	Jon Daniels Tel: 07825 713531	Blaze Signs Ltd JonD@blazesigns.co.uk
Drawn by:	GP	Blaze Signs Ltd

Index

Page 2	Revisions
Page 3	Elevation Drawing
Page 4-6	Proposed Signage / Works
Page 7	Elevation Drawing
Page 8	Proposed Signage / Works
Page 9	Proposed Photos

V15



www.blazesigns.co.uk

T +44 (0) 121 4577715
F +44 (0) 121 4539355

DRAWING SHOWN FOR VISUAL PURPOSES ONLY. ACTUAL SIGNAGE CONSTRUCTION (MANUFACTURE, MATERIALS & TECHNIQUES) MAY DIFFER TO THOSE SHOWN & ARE SUBJECT TO FINAL SITE CONDITIONS
BLAZE STANDARD PAINT FINISH IS 60% SEMI GLOSS.
CLIENT TO ADVISE PRIOR TO APPROVAL IF ANY SPECIAL FINISHES ARE REQUIRED



THE COPYRIGHT OF THIS DRAWING IS OWNED BY BLAZE SIGNS LIMITED
AND IS NOT TO BE DISCLOSED TO OTHER PERSONS OR TO BE USED FOR
MANUFACTURING PURPOSES WITHOUT PERMISSION.

149346 - Swiss Cottage - V15 Page 1

REVISIONS

Date	Details	Initials	Rev
17.07.2024	Original Issue	GP	V1
19.07.2024	Moved USP graphic to RHS goal post / Broke up main fascia into section / Added proposed photos	GP	V2
22.07.2024	Amended item 1 to be a continuous fascia	GP	V3
19.08.2024	Amended elevation drawings and amended items to suit new sizes	GP	V4
20.08.2024	Removed LHS window graphics	GP	V5
17.09.2024	Amended scheme to add 2 options of illuminated USP roundels	GP	V6
09.10.2024	Removed option B / Amended scale for second elevation	GP	V7
14.10.2024	Add dimensions to elevation drawings and move sign on left hand side to high level.	CW	V8
22.10.2024	Amended item 3 to be window vinyl rather than dibond panels	GP	V9
24.10.2024	Amended position of item 7 on side elevation	GP	V10
13.11.2024	Added height from floor measurements	GP	V11
13.01.2025	Added 'swoosh' graphic to item 3	GP	V12
15.01.2025	Amended 'swoosh' graphic text location	GP	V13
29.01.2025	Amended sign 7 to be an illuminated projecting sign	GP	V14
19.02.2025	Amended item 1 to be 1055mm tall	GP	V15

ELEVATION DRAWING - Scale 1:100



SIGNAGE SPECIFICATION

1 Folded Aluminium Panel - Scale 1:60



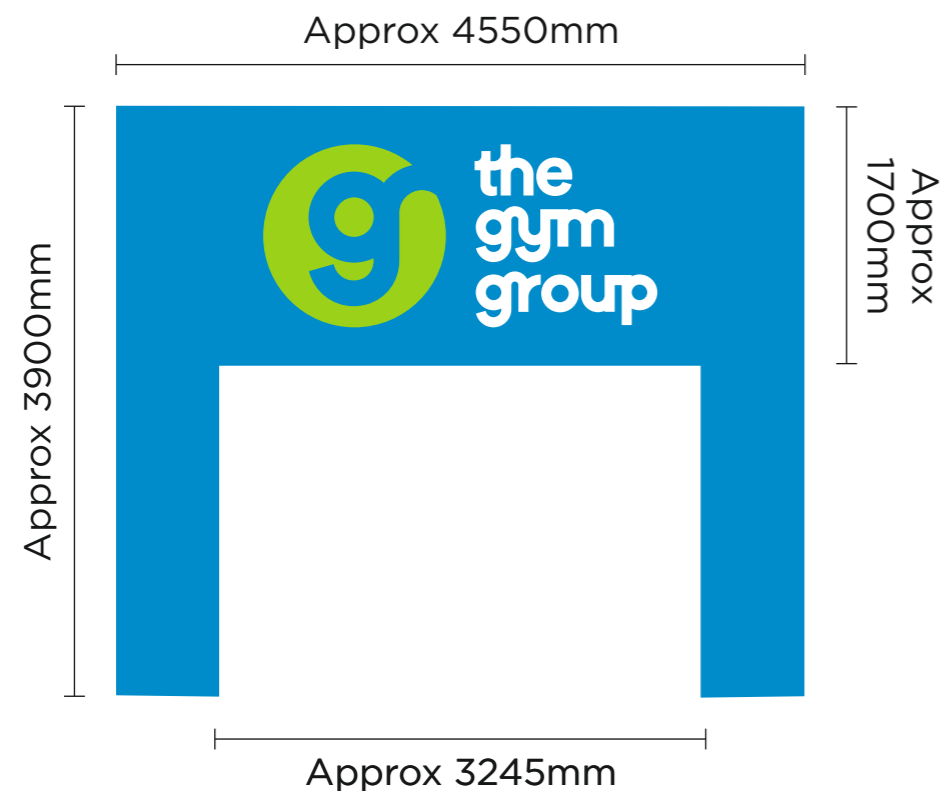
Folded aluminium panel finished Blue PMS Process Blue.

Sizes taken from elevation drawing, survey required for accurate sizes.

Fascia to sit in front of columns, varying depth measurements required by survey to determine construction.

2720mm FFL to underside of sign.

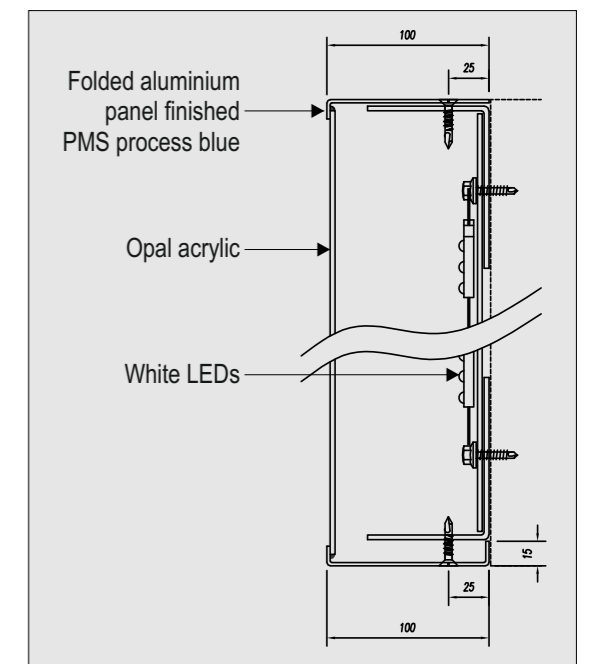
2 Slimline Econoflex Box - Scale 1:50



Folded aluminium panel finished Blue PMS Process Blue, stencil cut to accept logo and text backed with opal acrylic. Green translucent vinyl externally applied to the 'g' logo. Internally illuminated via white LEDs.

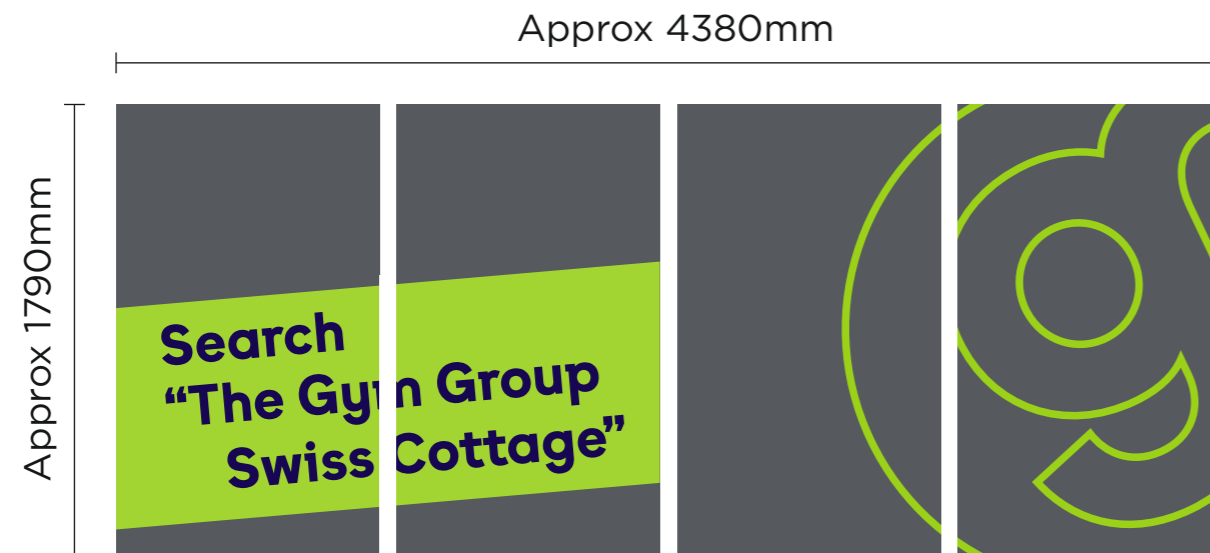
Sizes taken from elevation drawing, survey required for accurate sizes.

0mm FFL to underside of sign / 2200mm FFL to underside of cut out area.



SIGNAGE SPECIFICATION

3 Vinyl Graphics to Glazing - Scale 1:30



Grey background vinyl with suma cut green vinyl 'Super g' applied to the window areas.
Sizes taken from elevation drawing, survey required for accurate sizes.
950mm FFL to underside of sign.

4 Illuminated Projecting Sign - Scale 1:16

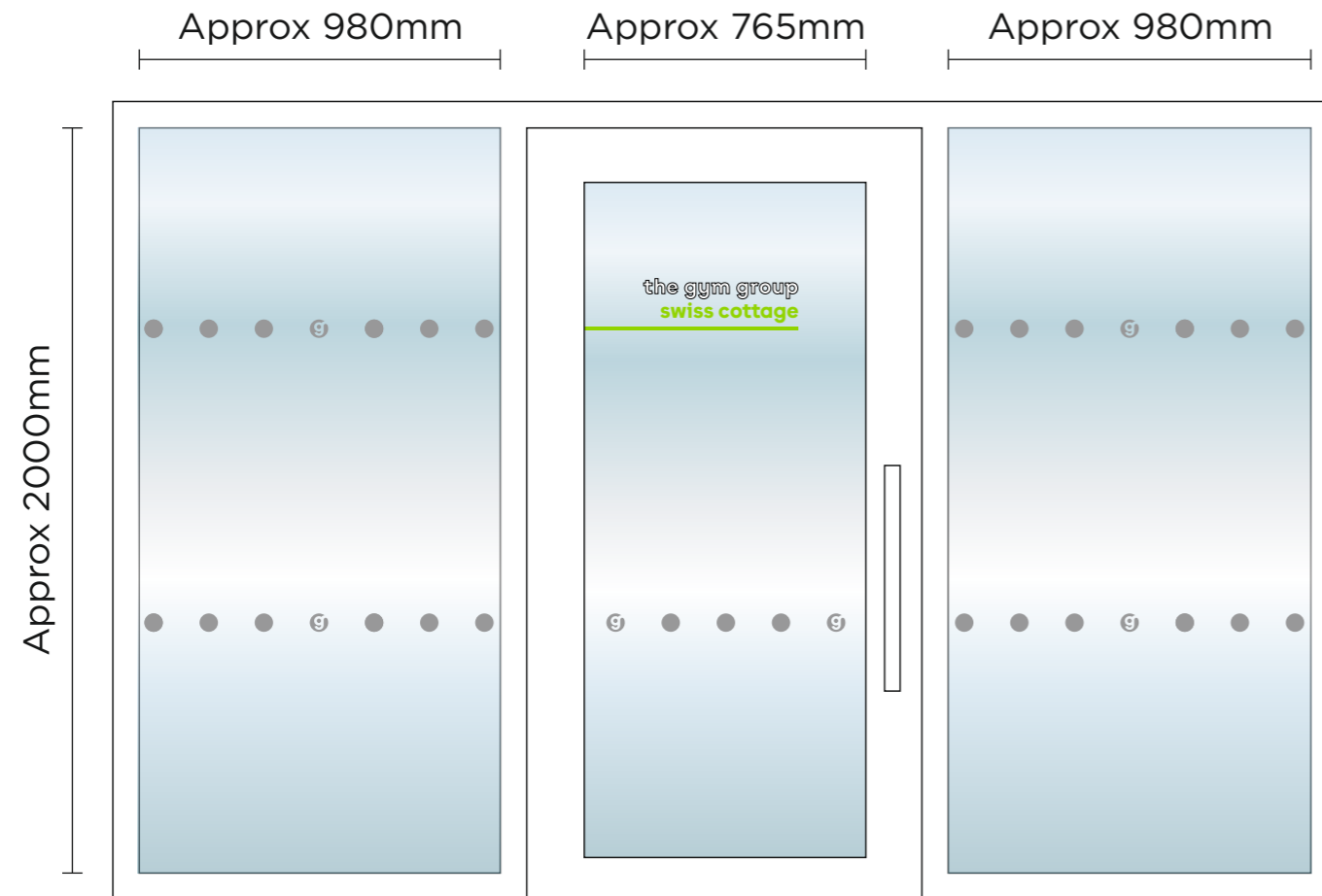


4-OFF illuminated suspended roundels. Fabricated from aluminium signcase, 100mm deep with removable frames, painted blue/green.
Fitted with vinyl decorated acrylic face panels. Illuminated via white LEDs.
1550mm FFL to underside of sign.

SIGNAGE SPECIFICATION

5 Site Name Vinyl - Scale 1:20

6 Manifestation Dots - Scale 1:20



Digitally printed vinyl graphics applied to the entrance glazing.

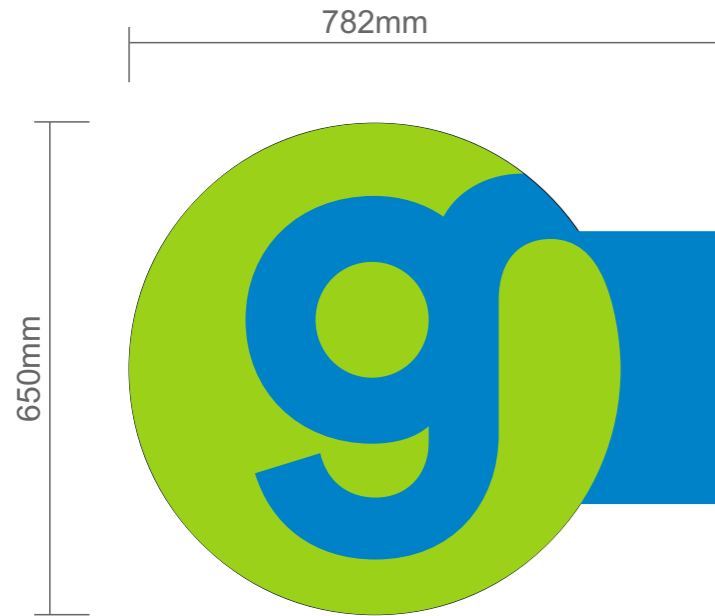
Sizes taken from elevation drawing, survey required for accurate sizes.

12 metres of single rows of manifestation dots required for glazing.

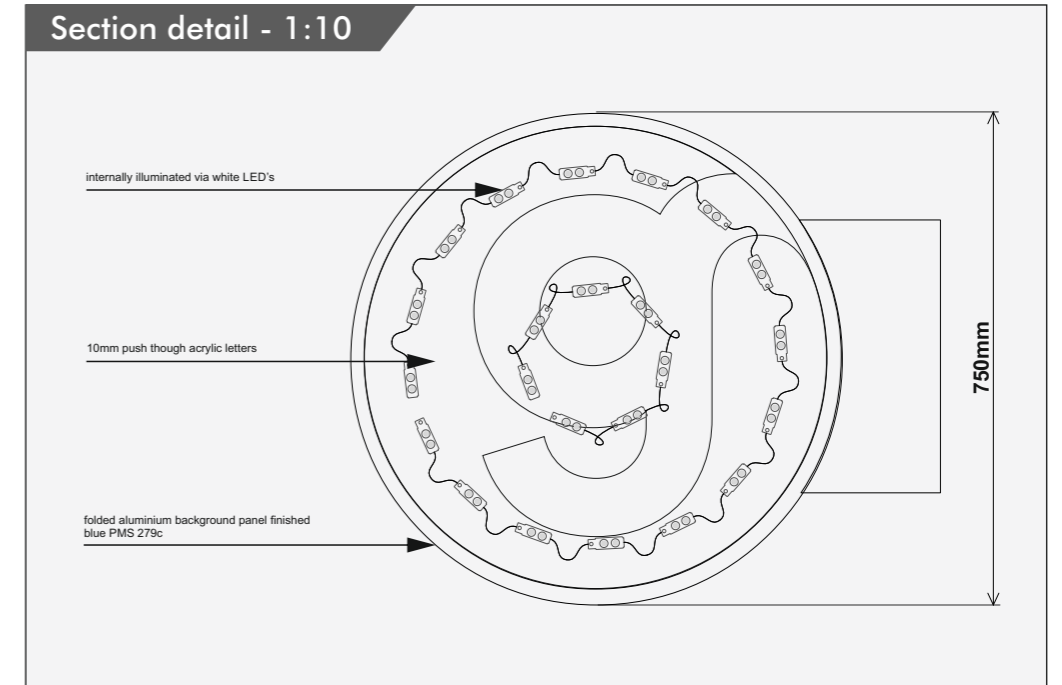
2.5 metres of double rows of manifestation dots required for door glazing area.

800/1600mm FFL to each row of manifestation dots.

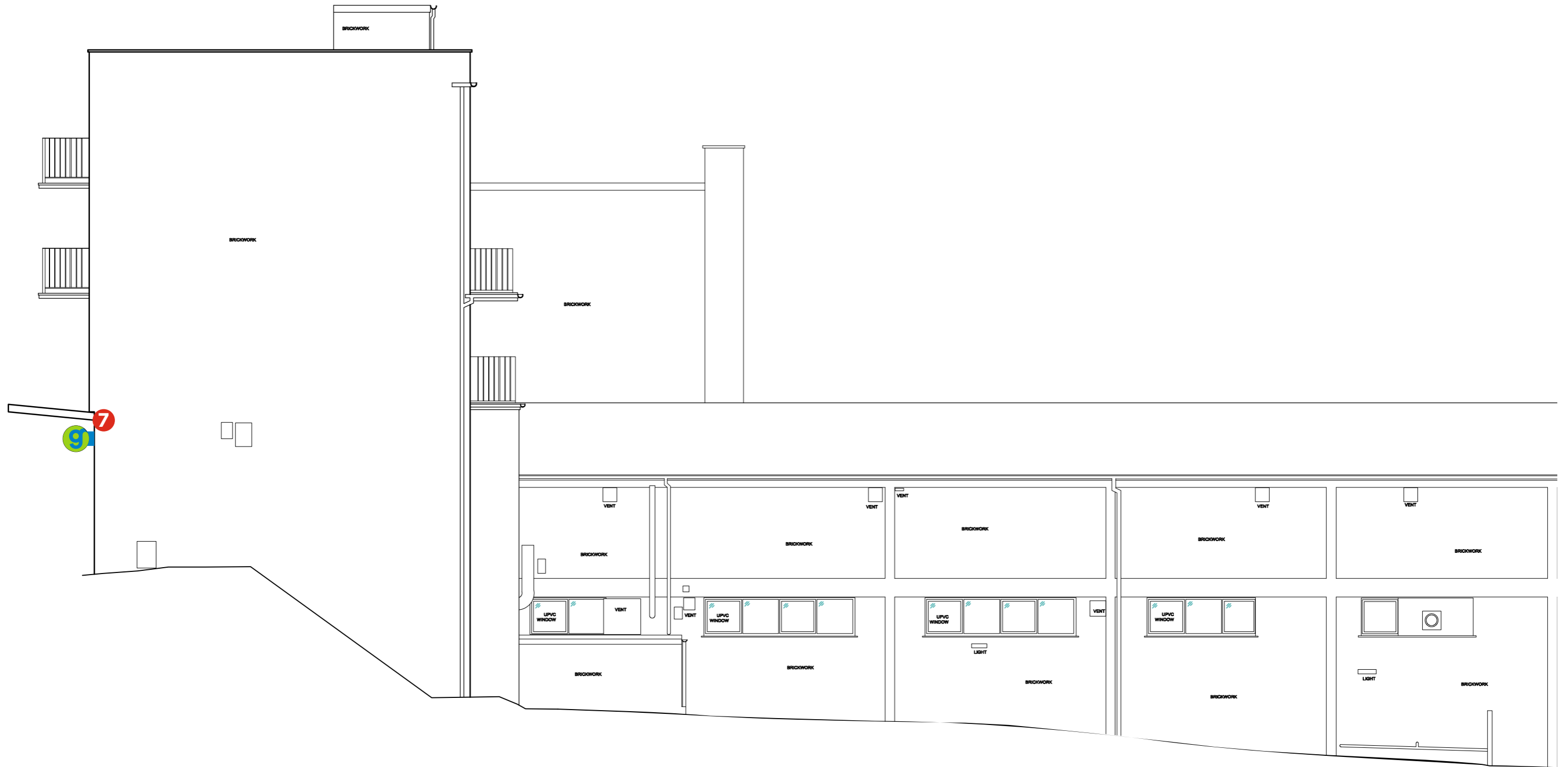
7 Projecting Signs - Scale 1:10



3-OFF aluminium projecting sign painted PMS 279C, fitted with fully illuminated acrylic face panels c/w translucent green vinyl. Internally illuminated via LEDs.
Height FFL: 2975mm



ELEVATION DRAWING - Scale 1:100



PROPOSED PHOTOS

