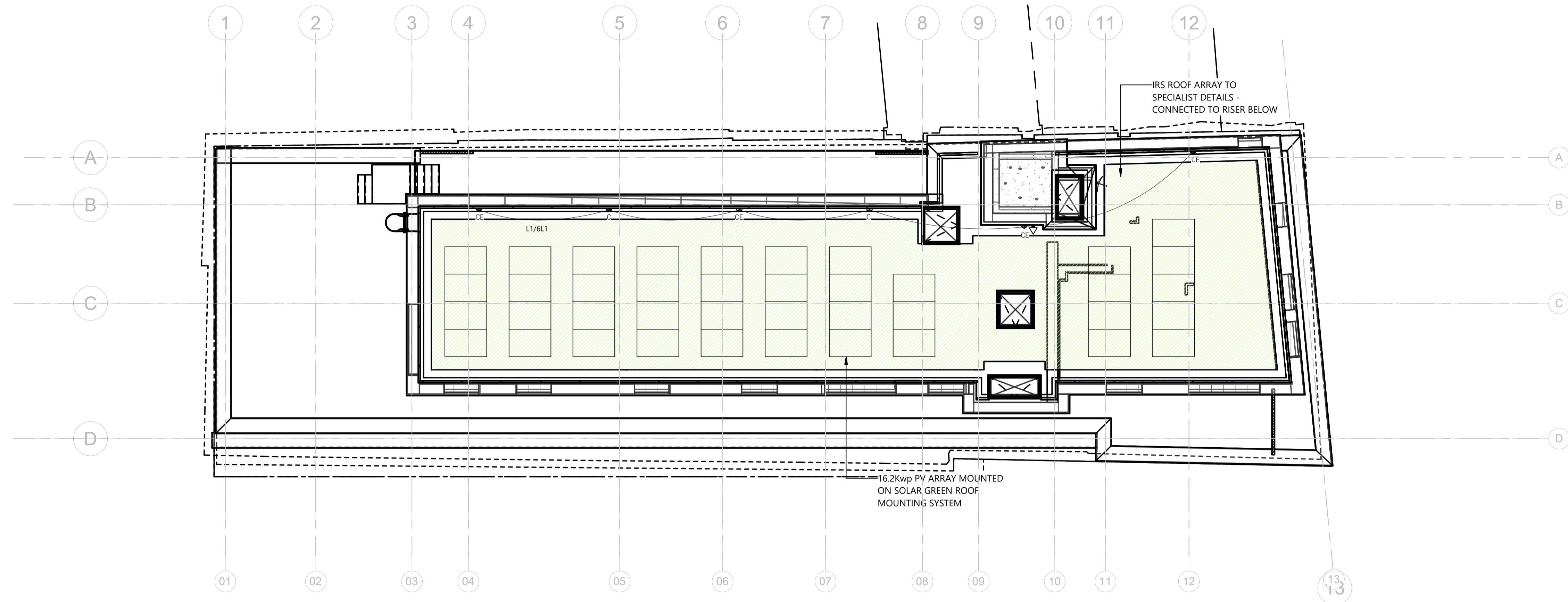


- Notes:**
- THIS DRAWING SHALL BE READ IN CONJUNCTION WITH THE SPECIFICATION AND ALL OTHER ENGINEERING AND ARCHITECTURAL DRAWINGS.
 - EXACT POSITIONS AND MOUNTING HEIGHTS OF ALL EQUIPMENT TO BE AGREED WITH THE CLIENT AND ARCHITECT BEFORE THE INSTALLATION IS COMMENCED, AND INDICATED ACCURATELY ON THE CONTRACTOR'S DETAILED WORKING DRAWINGS.
 - ALLOWANCE SHALL BE MADE TO CO-ORDINATE THE LOCATION OF MECHANICAL AND ELECTRICAL SERVICES TO THE FIXTURES AND FITTINGS SHOWN ON THE ARCHITECT'S DRAWING.



1 RL Roof Level Combined Electrical Services Layout
1:100

LEGEND

- ⊗ PIR TO CONTROL LIGHTING
- LIGHT SWITCH - LETTER DENOTES GANG - 1200mm AFFL
- △ 13A SWITCH SOCKET OUTLET C/W KEY SWITCH FOR CLEANERS USE - 450mm AFFL
- ⊕ 13A TWIN SWITCH SOCKET OUTLET - 450mm AFFL
- 13A CONNECTION UNIT
- 'AC' DENOTES AT 2100mm AFFL FOR ACCESS CONTROL
- 'AD' DENOTES 2200mm AFFL FOR ASSISTED OPENING DOOR
- 'D' DENOTES 2200mm AFFL FOR DOOR ENTRY SYSTEM
- 'EP' DENOTES 2200mm AFFL FOR EXTRACT FAN. INSTALL WIRING TO PIR/CONTROLLER AND EXTRACT FAN
- DUAL DATA OUTLET - 600mm AFFL UNLESS IDENTIFIED 'HL' THEN 2200mm AFFL
- SD FIRE ALARM/AOV SYSTEM - SMOKE DETECTOR - 'S' INDICATES C/W SOUNDER
- SDS FIRE ALARM/AOV SYSTEM - SMOKE DETECTOR C/W STROBE AND SOUNDER
- HD FIRE ALARM/AOV SYSTEM - HEAT DETECTOR - 'S' INDICATES C/W SOUNDER
- HDS FIRE ALARM/AOV SYSTEM - HEAT DETECTOR C/W STROBE AND SOUNDER
- ⊙ FIRE ALARM SYSTEM - BREAK GLASS CALL PANEL
- MD AOV SYSTEM - MOTORISED DAMPER TO AOV
- AOV AOV SYSTEM - AOV WINDOW/ROOF VENT
- INPUT/OUTLET BOX LINKED TO AOV SYSTEM
- ⚡ FIRE ALARM SYSTEM - IP65 SOUNDER
- A SURFACE MOUNTED DECORATIVE LUMINAIRE C/W 26W LED LAMPS AS ANSELL LIGHTING REF. AECLED/W OR EQUIVALENT
- AE AS 'A' BUT C/W EMERGENCY
- ▬ B IP65 SURFACE LUMINAIRE C/W 30W LED LAMPS AS ANSELL LIGHTING REF. ATOREV05 OR EQUIVALENT
- ▬ BE AS 'B' BUT COMPLETE WITH EMERGENCY
- ⊕C IP65 LED BULKHEAD
- ⊕CE AS 'C' BUT COMPLETE WITH EMERGENCY
- ⊕ CE CEILING MOUNTED ILLUMINATED ESCAPE SIGN. REFER TO ARCHITECTS DRAWING 2960-CVA-TM-ZZ-DR-A-05903 FOR FURTHER DETAILS
- VE DOOR ENTRY SYSTEM - VIDEO ENTRY PANEL WITH PROXIMITY READER
- AE DOOR ENTRY SYSTEM - AUDIO ENTRY PANEL WITH PROXIMITY READER
- PR DOOR ENTRY SYSTEM - AUDIO ENTRY PANEL WITH PROXIMITY READER
- DR DOOR ENTRY SYSTEM - DOOR RELEASE C/W GREEN BGCP OVER
- M DOOR ENTRY SYSTEM - ELECTROMAGNETIC LOCK
- DA DISABLED REFUGE PANEL
- DE AUDIO DOOR ENTRY SYSTEM
- DR DOOR ENTRY HANDSET AND RELEASE
- CCV CCTV CAMERA

Rev	Description	Date
C2	F/A Sounder Added	04/07/23
C1	Preliminary Issue	06/06/23

Norman Bromley
Partnership LLP

Consulting Engineers
Bridge House,
97-101 High Street,
Tonbridge,
Kent. TN9 1DR
Tel.No.(01732)773737
Email: mail@normanbromley.co.uk

CLIENT
Glenman

PROJECT
Tottenham Mews

TITLE
Roof Plan - Electrical Services Layout

Xref

DRAWN BY Author	CHECKED BY Checker	DATE 05/30/23
SCALE (@A1) As indicated		PROJECT NUMBER 2043
DRAWING NUMBER 2043-NBP-TM-RF-DR-E-11007		REV C2