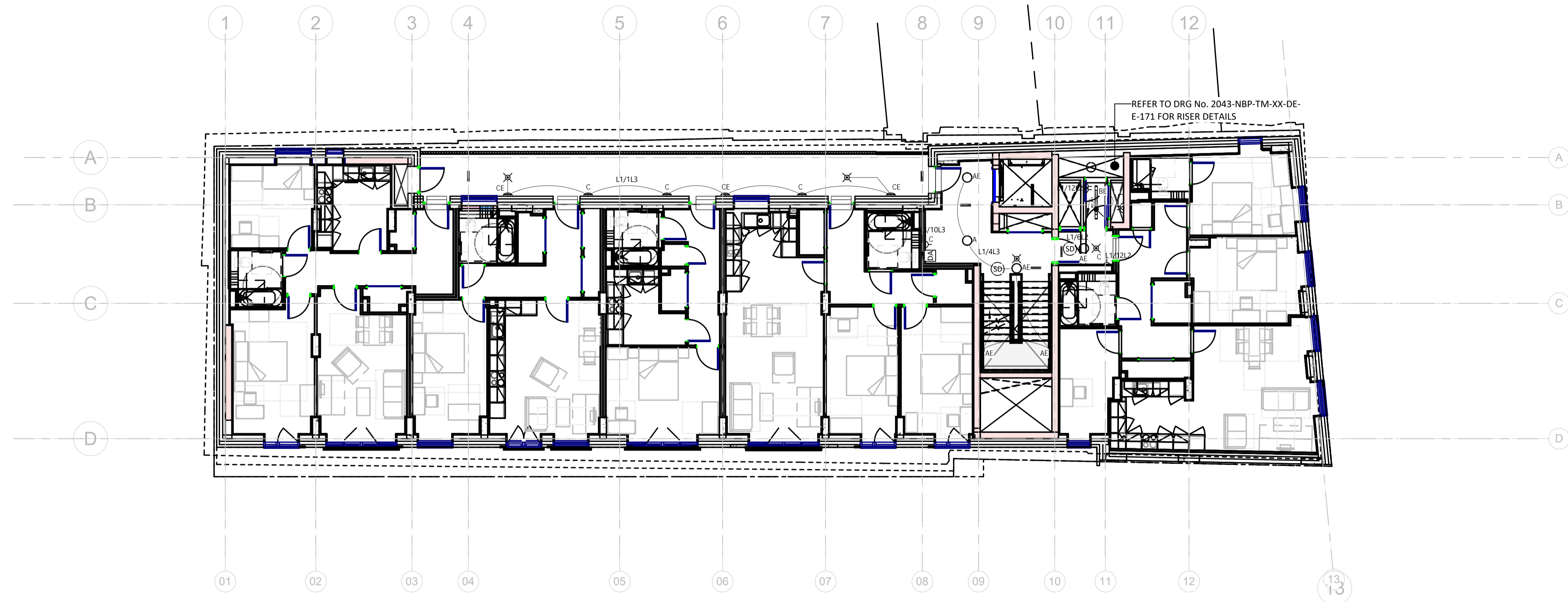


- Notes:**
- THIS DRAWING SHALL BE READ IN CONJUNCTION WITH THE SPECIFICATION AND ALL OTHER ENGINEERING AND ARCHITECTURAL DRAWINGS.
 - EXACT POSITIONS AND MOUNTING HEIGHTS OF ALL EQUIPMENT TO BE AGREED WITH THE CLIENT AND ARCHITECT BEFORE THE INSTALLATION IS COMMENCED, AND INDICATED ACCURATELY ON THE CONTRACTOR'S DETAILED WORKING DRAWINGS.
 - ALLOWANCE SHALL BE MADE TO CO-ORDINATE THE LOCATION OF MECHANICAL AND ELECTRICAL SERVICES TO THE FIXTURES AND FITTINGS SHOWN ON THE ARCHITECT'S DRAWING.



03 Third Floor Combined Electrical Services Layout
 1:100

LEGEND

- ⊗ PIR TO CONTROL LIGHTING
- LIGHT SWITCH - LETTER DENOTES GANG - 1200mm AFFL
- ⊠ 13A SWITCH SOCKET OUTLET C/W KEY SWITCH FOR CLEANERS USE - 450mm AFFL
- ⊠ 13A TWIN SWITCH SOCKET OUTLET - 450mm AFFL
- ▲ 13A CONNECTION UNIT
 'AC' DENOTES AT 2100mm AFFL FOR ACCESS CONTROL
 'AD' DENOTES 2200mm AFFL FOR ASSISTED OPENING DOOR
 'D' DENOTES 2200mm AFFL FOR DOOR ENTRY SYSTEM
 'E' DENOTES 2200mm AFFL FOR EXTRACT FAN. INSTALL WIRING TO PIR/CONTROLLER AND EXTRACT FAN
- ⊠² DUAL DATA OUTLET - 600mm AFFL UNLESS IDENTIFIED 'HL' THEN 2200mm AFFL
- ⊠^{SD} FIRE ALARM/AOV SYSTEM - SMOKE DETECTOR - 'S' INDICATES C/W SOUNDER
- ⊠^{SDS} FIRE ALARM/AOV SYSTEM - SMOKE DETECTOR C/W STROBE AND SOUNDER
- ⊠^{HD} FIRE ALARM/AOV SYSTEM - HEAT DETECTOR - 'S' INDICATES C/W SOUNDER
- ⊠^{HDs} FIRE ALARM/AOV SYSTEM - HEAT DETECTOR C/W STROBE AND SOUNDER
- ⊠[⊙] FIRE ALARM SYSTEM - BREAK GLASS CALL PANEL
- ⊠^{MD} AOV SYSTEM - MOTORISED DAMPER TO AOV
- ⊠^{AOV} AOV SYSTEM - AOV WINDOW/ROOF VENT
- ⊠^{I/O} INPUT/OUTLET BOX LINKED TO AOV SYSTEM
- ⊠^{*} FIRE ALARM SYSTEM - IP65 SOUNDER
- A SURFACE MOUNTED DECORATIVE LUMINAIRE C/W 26W LED LAMPS AS ANSELL LIGHTING REF. AECLED/W OR EQUIVALENT
- AE AS 'A' BUT C/W EMERGENCY
- B IP65 SURFACE LUMINAIRE C/W 30W LED LAMPS AS ANSELL LIGHTING REF. ATOREV05 OR EQUIVALENT
- BE AS 'B' BUT COMPLETE WITH EMERGENCY
- ⊕C IP65 LED BULKHEAD
- ⊕CE AS 'C' BUT COMPLETE WITH EMERGENCY
- CEILING MOUNTED ILLUMINATED ESCAPE SIGN. REFER TO ARCHITECTS DRAWING 2960-CVA-TM-ZZ-DR-A-05903 FOR FURTHER DETAILS
- ⊠^{VE} DOOR ENTRY SYSTEM - VIDEO ENTRY PANEL WITH PROXIMITY READER
- ⊠^{AE} DOOR ENTRY SYSTEM - AUDIO ENTRY PANEL WITH PROXIMITY READER
- ⊠^{PR} DOOR ENTRY SYSTEM - AUDIO ENTRY PANEL WITH PROXIMITY READER
- ⊠^{DR} DOOR ENTRY SYSTEM - DOOR RELEASE C/W GREEN BGCP OVER
- ⊠^M DOOR ENTRY SYSTEM - ELECTROMAGNETIC LOCK
- ⊠^{DA} DISABLED REFUGE PANEL
- ⊠^{DE} AUDIO DOOR ENTRY SYSTEM
- ⊠^{DR} DOOR ENTRY HANDSET AND RELEASE
- ⊠^{CC} CCTV CAMERA

Rev	Description	Date
C1	Construction Issue	27/11/23

Norman Bromley
 Partnership LLP
 Consulting Engineers
 Bridge House,
 97-101 High Street,
 Tonbridge,
 Kent. TN9 1DR
 Tel.No.(01732)773737
 Email: mail@normanbromley.co.uk

CLIENT
 Glenman

PROJECT
 Tottenham Mews

TITLE
 Third Floor Plan - Electrical Services Layout

<i>Xref</i>		
DRAWN BY LJ	CHECKED BY MR	DATE 05/30/23
SCALE (@A1) As indicated		PROJECT NUMBER 2043
DRAWING NUMBER 2043-NBP-TM-03-DR-E-11004		REV C1