

# ROGER MEARS ARCHITECTS

19 Compton Terrace London N1 2UN  
www.rmears.co.uk

tel: 020 7359 8222  
email: rma@rmears.co.uk

Planning application for external works at

12 Steele's Road, London NW3 4SE

## Photos



February 2025

Roger Mears Architects LLP

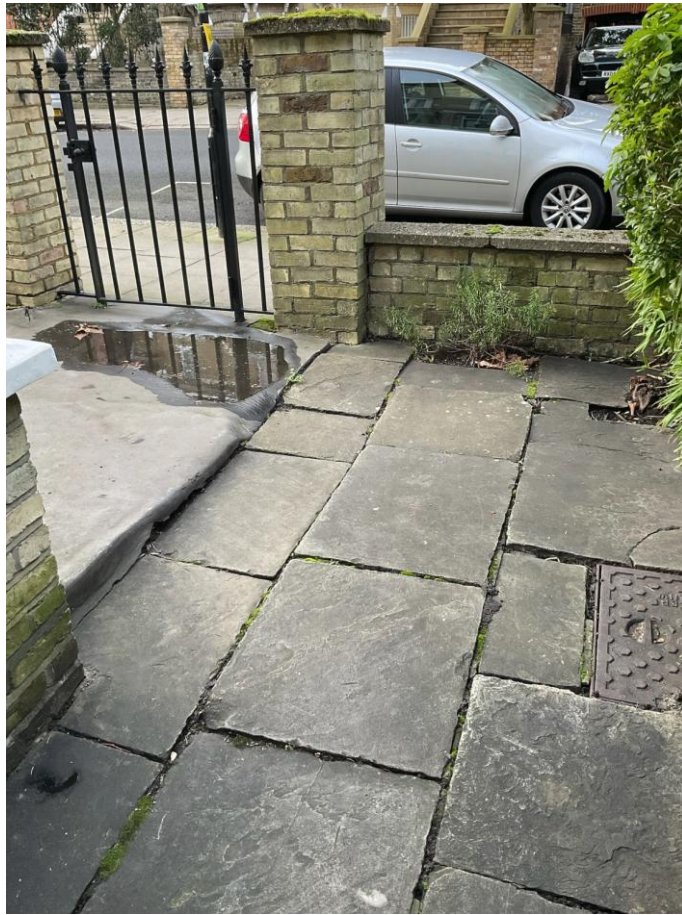
2435/01 – 12 Steele's Road, London NW3



Entrance steps to house



Access to lower ground floor and garden



Existing paving and gate



Existing paving to front driveway



Existing asphalt surface to entrance path



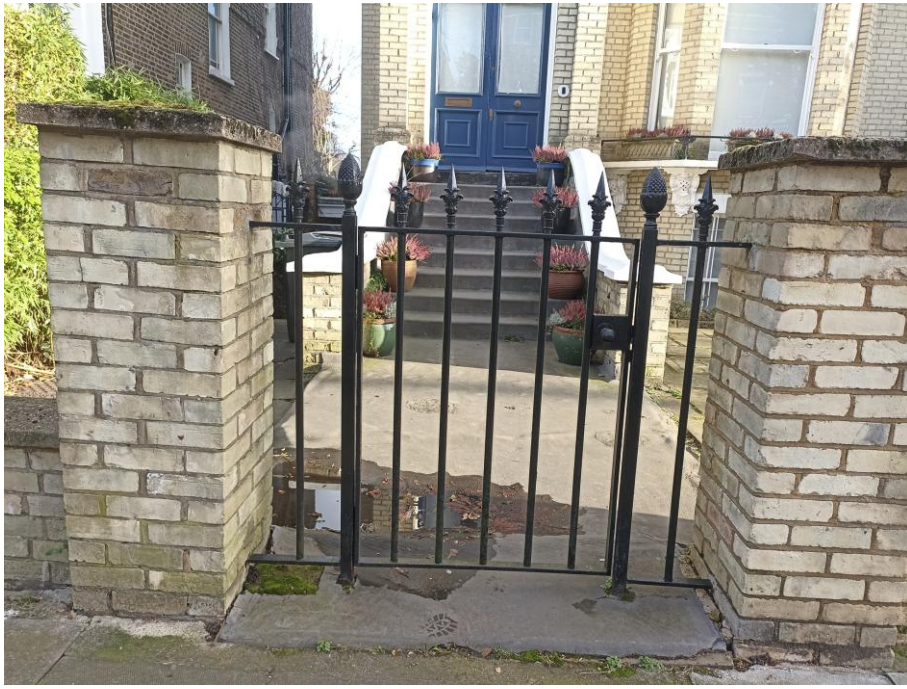
Side view of existing steps



Side view of entrance steps



Existing paving and garden piers



Gate



Asphalt surface to entrance steps