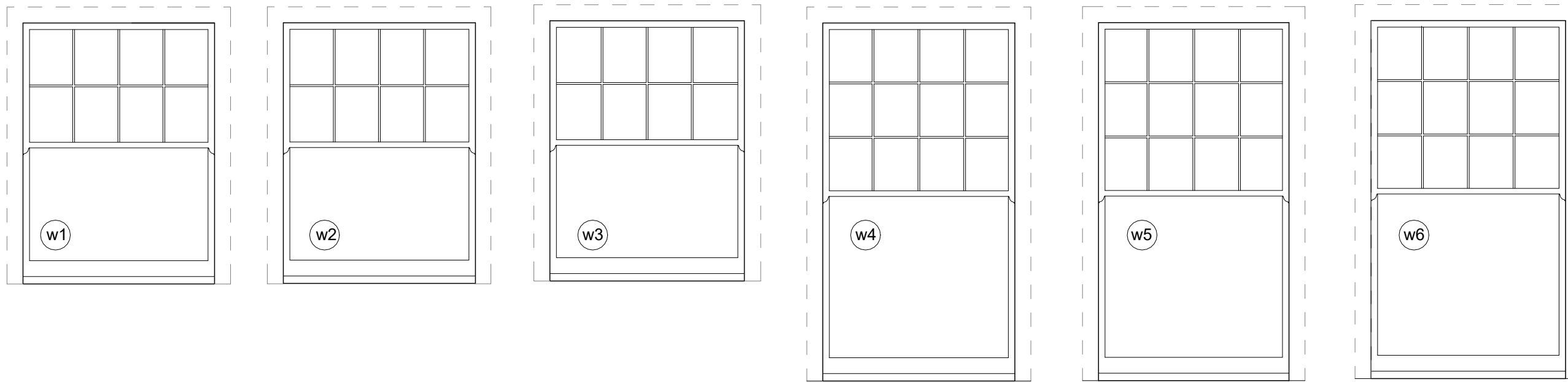
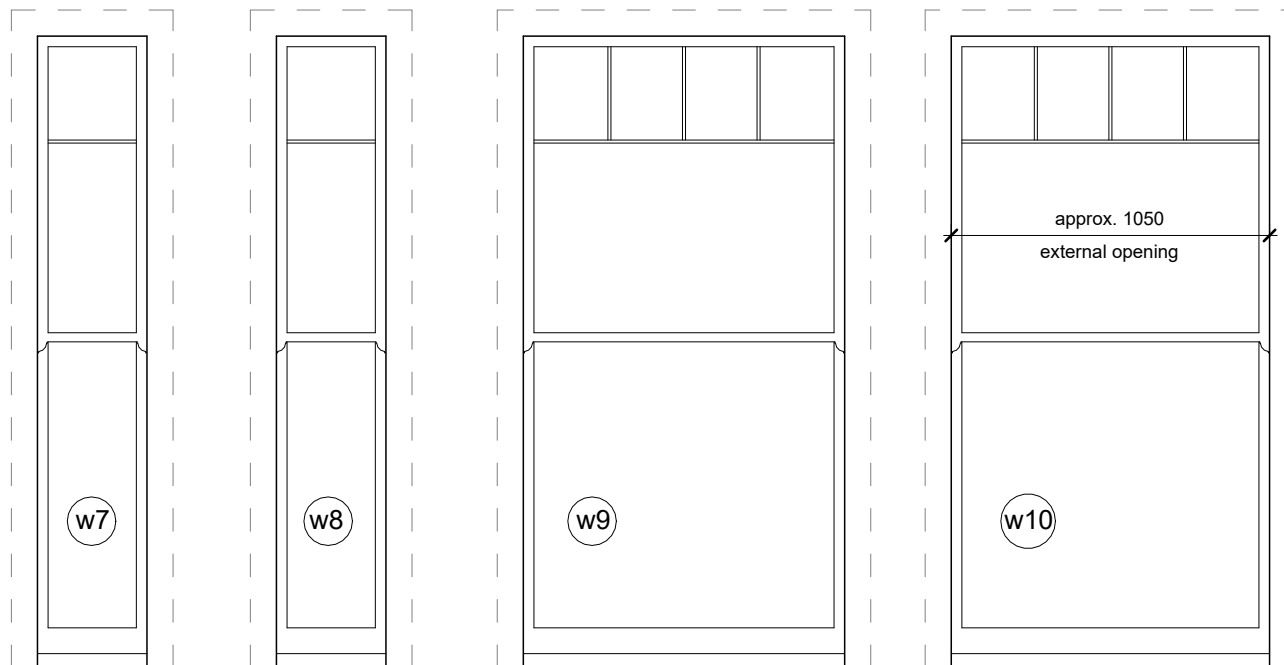


This is a drawing/ document intended for planning and/ or party wall purposes, do not use this as Construction information unless it is issued for Construction. Boundary lines are indicative and do not necessarily represent legal boundaries, which need to be established between the parties involved if necessary.
This drawing is copyright by STUDIO VK Ltd.



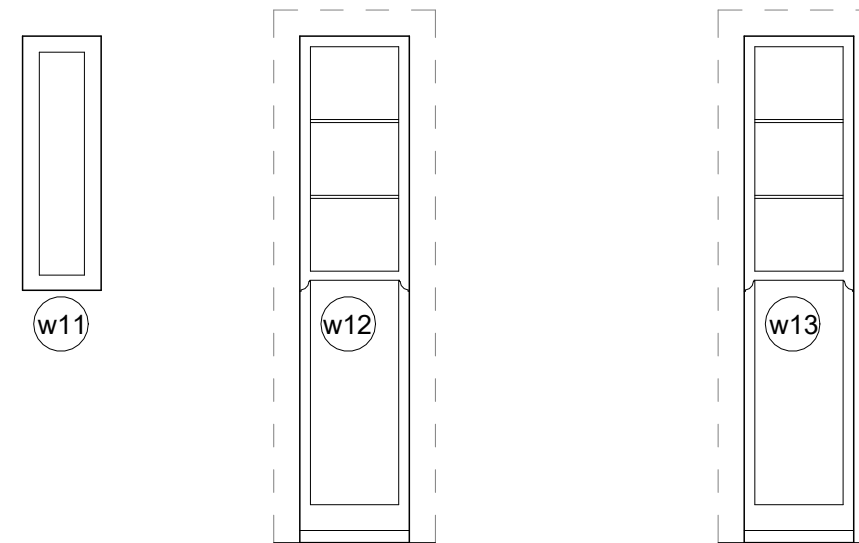
Window schedule:
(window numbers refer to manufacturer's window references)

- w1 - new double glazed timber box sash.
- w2 - new double glazed timber box sash.
- w3 - new double glazed timber box sash.
- w4 - new double glazed timber box sash.
- w5 - new double glazed timber box sash.
- w6 - new double glazed timber box sash.
- w7 - new double glazed timber box sash.
- w8 - new double glazed timber box sash.
- w9 - new double glazed timber box sash.
- w10 - new double glazed timber box sash.
- w11 - new double glazed timber casement.
- w12 - new double glazed timber box sash.
- w13 - new double glazed timber box sash.
- w14 - new double glazed timber box sash.
- w15 - new double glazed timber box sash.

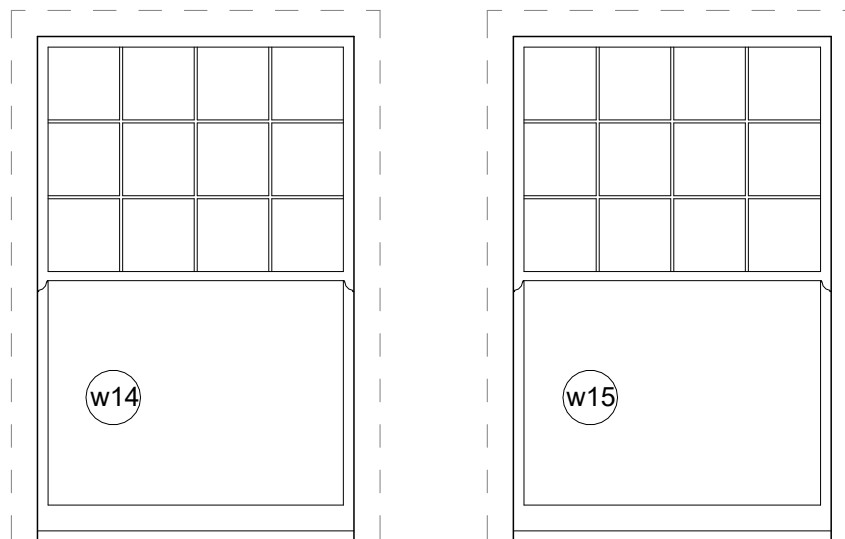


Door schedule:
(door numbers refer to manufacturer's door references)

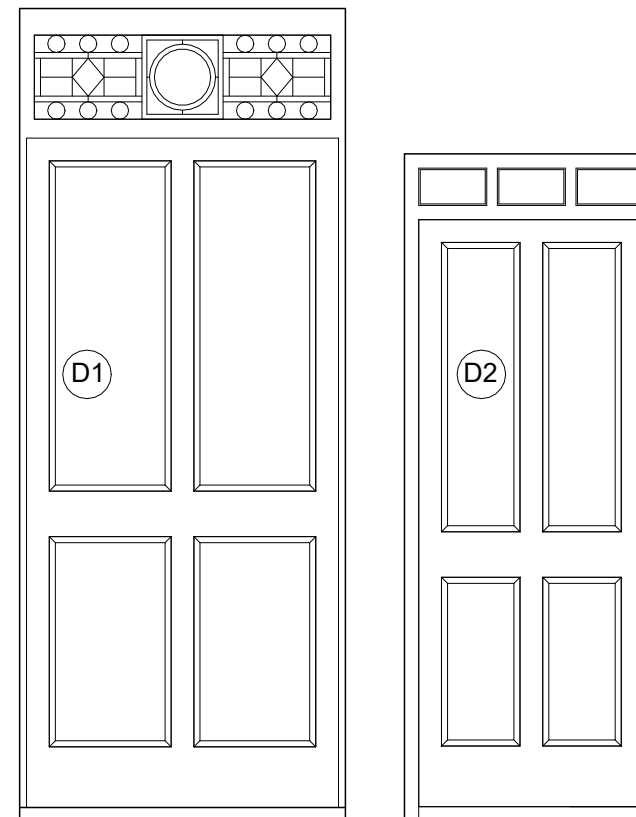
- D1 - new framed/ panelled timber door with double glazing in door panel. Refurbished fanlight panel (with float glass) to sit on external facing side of the treble glazed unit, with outward facing leadwork.
- D2 - new framed/ panelled timber door with double glazing.



Note:
Window and door elevations indicative. Refer to drawings from manufacturer 'North London Box Sash Ltd.' for accurate sizing and detailing.



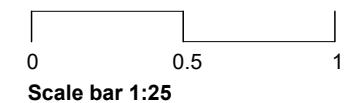
Specification note, windows:
Traditional wooden (box sash) windows. Fenestration to match existing arrangements. Double glazed with brushes, locks & general ironmongery with horn detail to match existing.
Window construction based on all typical details as shown on detailed drawings by 'North London Box Sash Ltd.' (NLBS)
Typical glazing:
Top sash Glazing (from external to internal).
Pane 1 : 4mm Float Glass Extra Clear.
CHROMATECH ultra WARM EDGE spacer 6mm.
Pane 2: Climaguard Premium2 4mm Float Glass Extra Clear.
Bottom sash Glazing (from external to internal)
Pane 1 : 4mm Toughened Glass Extra Clear.
CHROMATECH ultra WARM EDGE spacer 6mm.
Pane 2: Climaguard Premium2 4mm Toughened Glass Extra Clear.



Specification note, doors:
Traditional wooden framed and panelled doors.
Sealed double glazed units in door panels.
Refurbished fanlight panel (with float glass) to sit on external facing side of the treble glazed unit, with outward facing leadwork.

Door construction based on all typical details as shown on detailed drawings by 'North London Box Sash Ltd.' (NLBS)

Typical glazing:
(from external to internal).
Pane 1 : 4mm Toughened Glass Extra Clear.
CHROMATECH ultra WARM EDGE spacer 6mm.
Pane 2: Climaguard Premium2 4mm Toughened Glass Extra Clear.



No.	Revision	Date	Drawn by
01	Stained fanlight description revised	03.03.25	UVK

Planning

/
Site address: 34 Denning Road, NW3 1SU, London

34 Denning Road

Overview window & door schedule (external view)

Drawing No.	400-01
Project No.	24-02
Date	03.12.2024
Drawn	UVK
Checked by	UVK
Scale @ A3	1 : 25

