





Location plan @ 1:1250

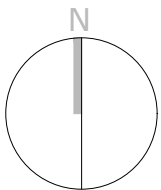


Site plan @ 1:500

Site Boundary 

Scale Bar 

Do not scale from this drawing. If in doubt, ask.  
This drawing is the property of malth design limited and must not be copied, reproduced or disclosed without written permission.



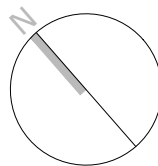
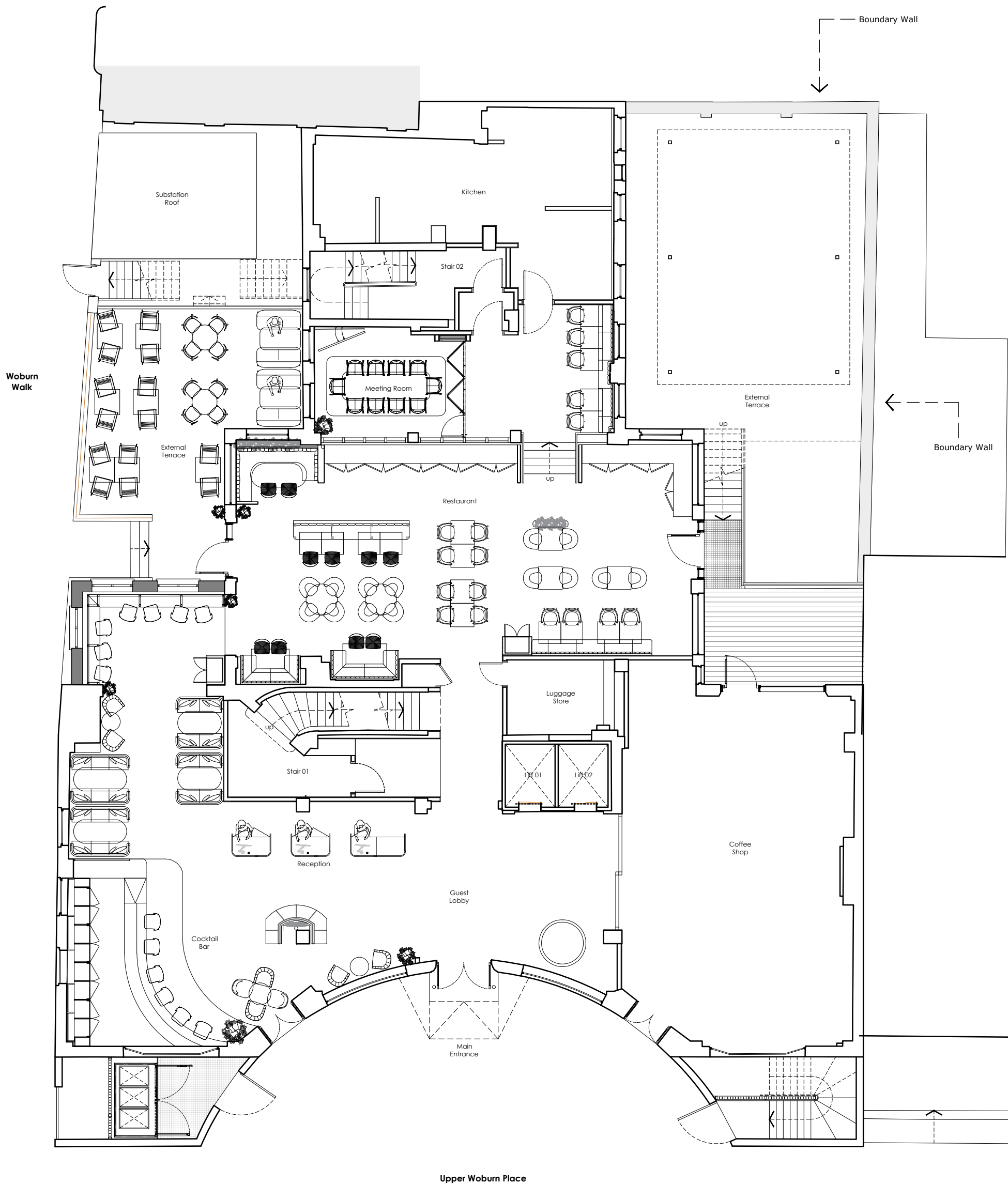
previous revisions  
revision:  
-- First issue

by: KR date: 27.02.2025

suite 320-323  
baltic chambers  
50 wellington street  
glasgow g2 6hj  
  
0141 348 7700  
  
office@maithdesign.com  
www.maithdesign.com

**MAITH**  
DESIGN LTD

project 0100 County Hotel Euston  
client Splendid Hospitality Group  
drawing Site Location Plan  
scale @ A3 as noted  
dwg number AL(00)700  
revision -  
date 27.02.2025  
status Planning



Do not scale from this drawing. If in doubt, ask.  
This drawing is the property of maith design limited and must not be copied, reproduced or disclosed without written permission.

previous revisions  
revision: -- First issue

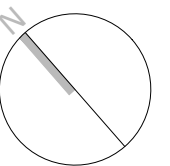
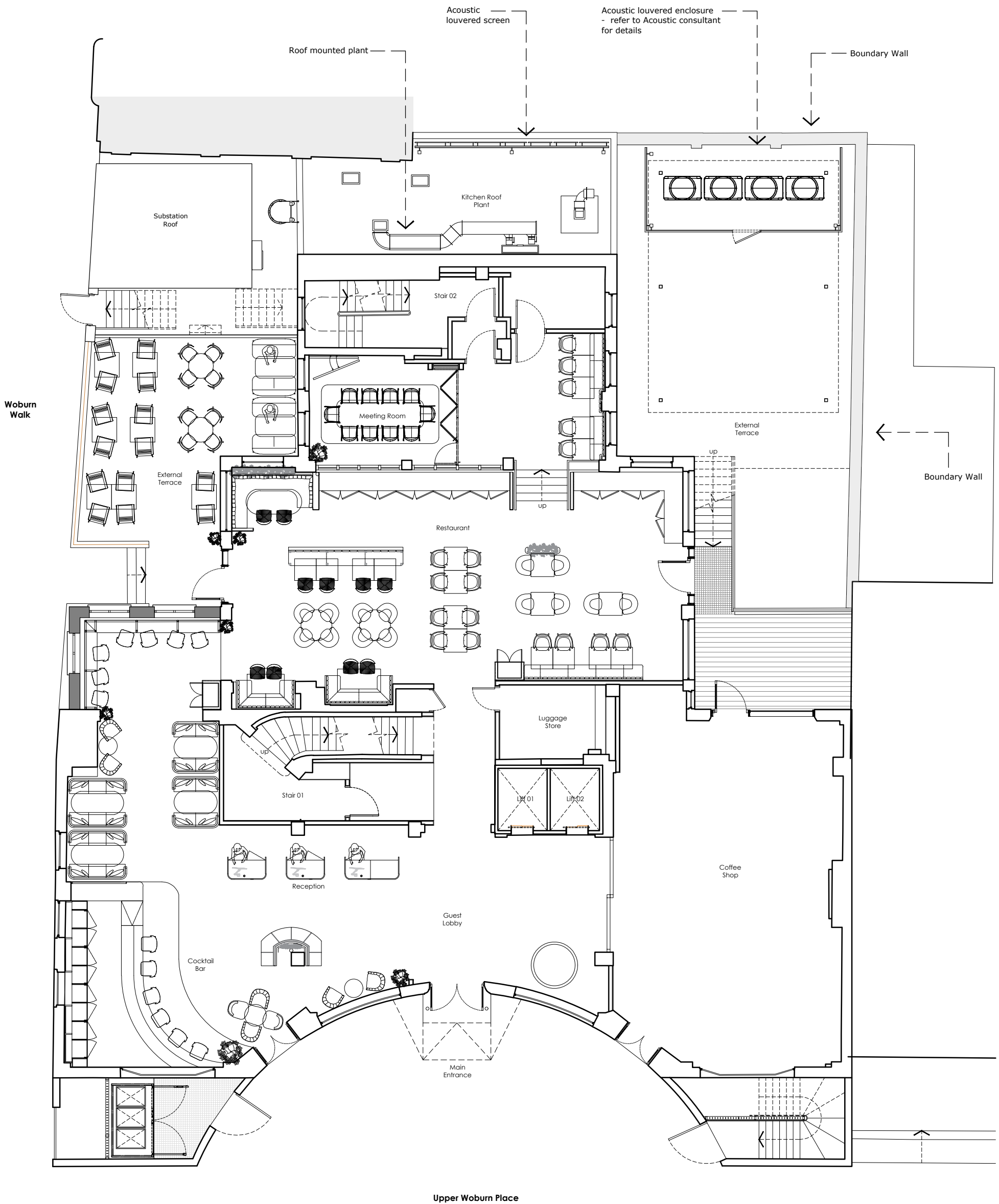
by: KR  
date: 27.02.2025

suite 320-323  
baltic chambers  
50 wellington street  
glasgow g2 6hj

office@maithdesign.com  
www.maithdesign.com

**MAITH**  
DESIGN LTD

project 0100 County Hotel Euston  
client Spendid Hospitality Group  
drawing Existing Plan : Ground Floor  
scale @ A3 1:125  
dwg number PL(00)701  
revision -  
date 27.02.2025  
status Planning



Do not scale from this drawing. If in doubt, ask.  
This drawing is the property of maith design limited and must not be copied, reproduced or disclosed without written permission.

previous revisions  
revision: -- First issue

by: KR  
date: 27.02.2025

suite 320-323  
baltic chambers  
50 wellington street  
glasgow g2 6hj

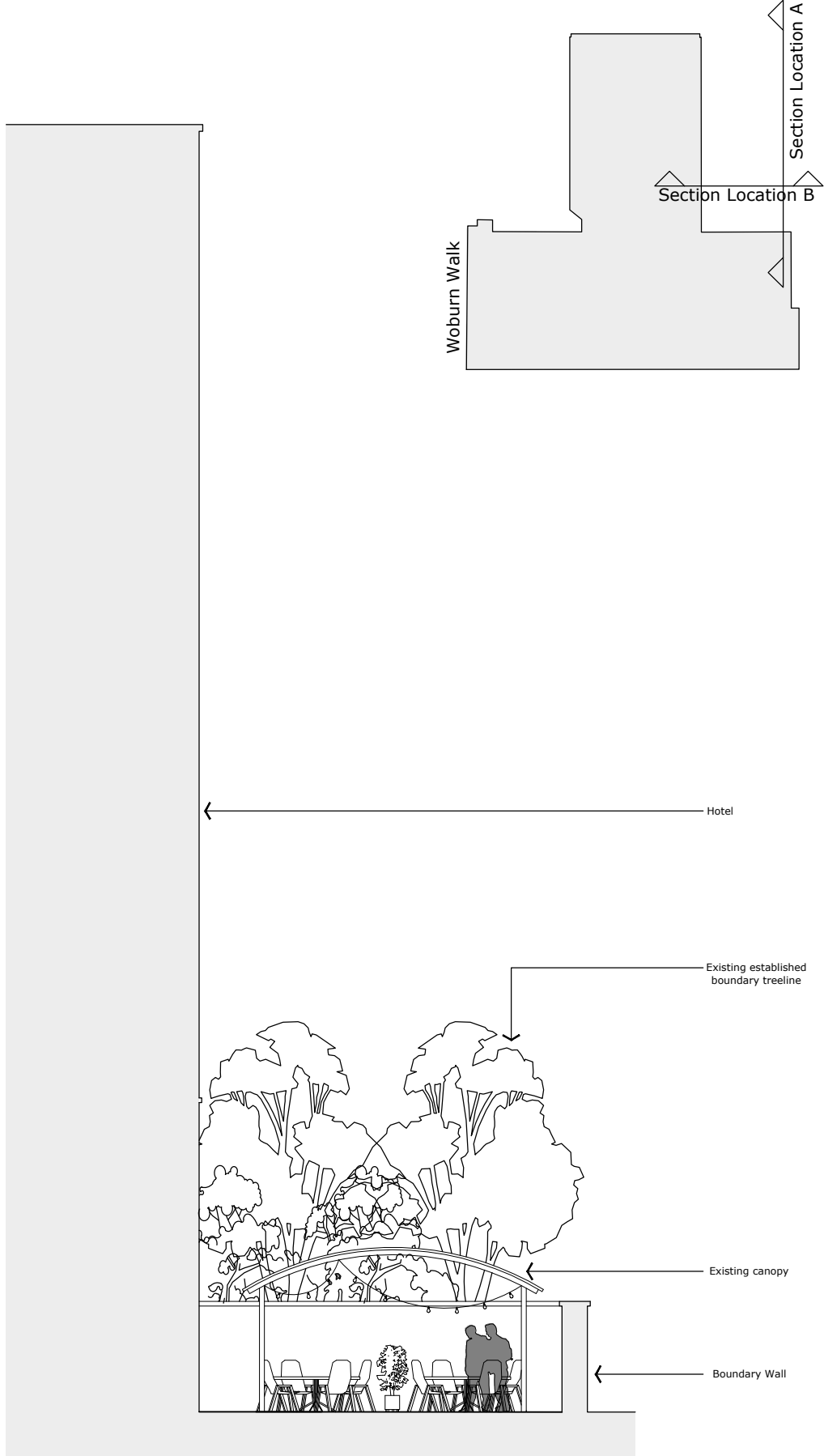
office@maithdesign.com  
www.maithdesign.com

MAITH  
DESIGN LTD

project 0100 County Hotel Euston  
client Spendid Hospitality Group  
drawing Proposed Plan : Ground Floor  
scale @ A3 1:125  
dwg number PL(00)702  
revision -  
date 27.02.2025  
status Planning



Section A



Section B

Do not scale from this drawing. If in doubt, ask.  
This drawing is the property of maith design limited and must not be copied, reproduced or disclosed without written permission.

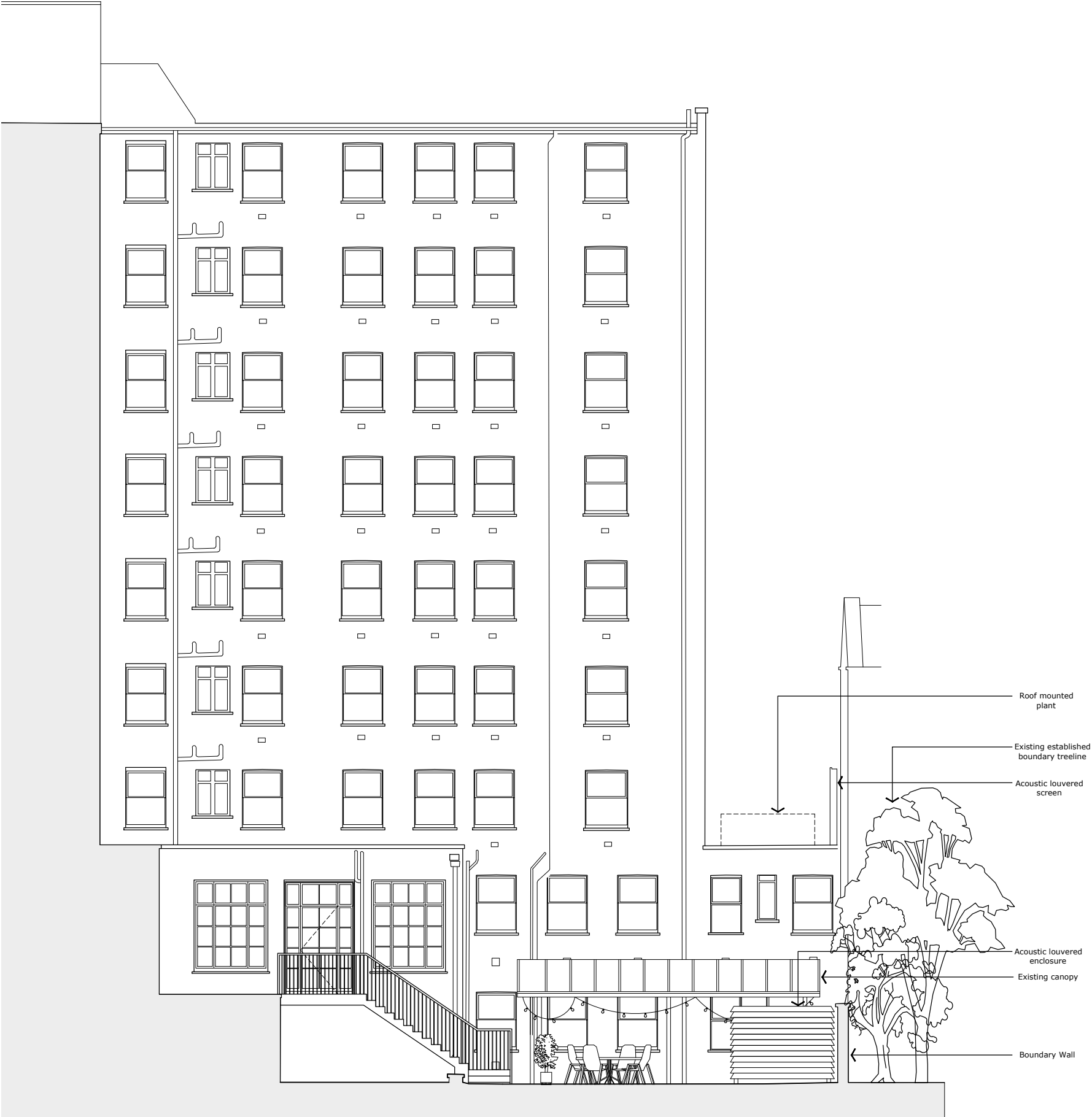
previous revisions  
revision:  
A Section B added

by: MD  
date: 28.02.2025

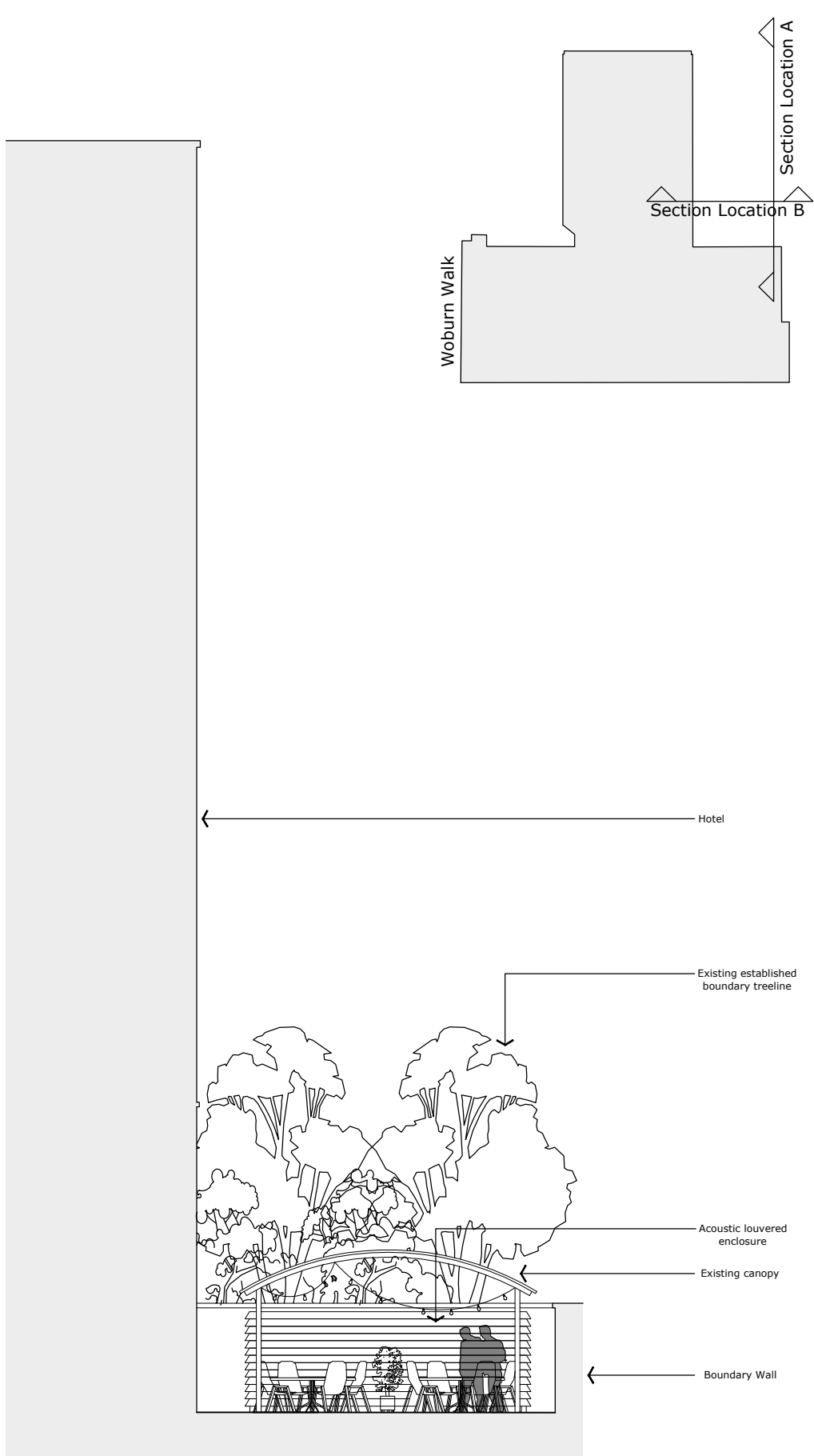
suite 320-323  
baltic chambers  
50 wellington street  
glasgow g2 6hj  
  
0141 348 7700  
  
office@maithdesign.com  
www.maithdesign.com

MAITH  
DESIGN LTD

project  
client  
drawing  
scale @ A3  
dwg number  
revision  
date  
status  
  
County Hotel Euston  
Splendid Hospitality Group  
Existing Courtyard Sections  
1:125  
PL(00)703  
A  
28.02.2025  
Planning



Section A



Section B

Do not scale from this drawing. If in doubt, ask.  
This drawing is the property of maith design limited and must not be copied, reproduced or disclosed without written permission.

previous revisions  
revision:  
A Section B added

by: MD date: 28.02.2025

suite 320-323  
baltic chambers  
50 wellington street  
glasgow g2 6hj

0141 348 7700

office@maithdesign.com  
www.maithdesign.com

MAITH  
DESIGN LTD

project County Hotel Euston  
client Splendid Hospitality Group  
drawing Proposed Courtyard Sections  
scale @ A3 1:125  
dwg number PL(00)703  
revision -  
date 28.02.2025  
status -