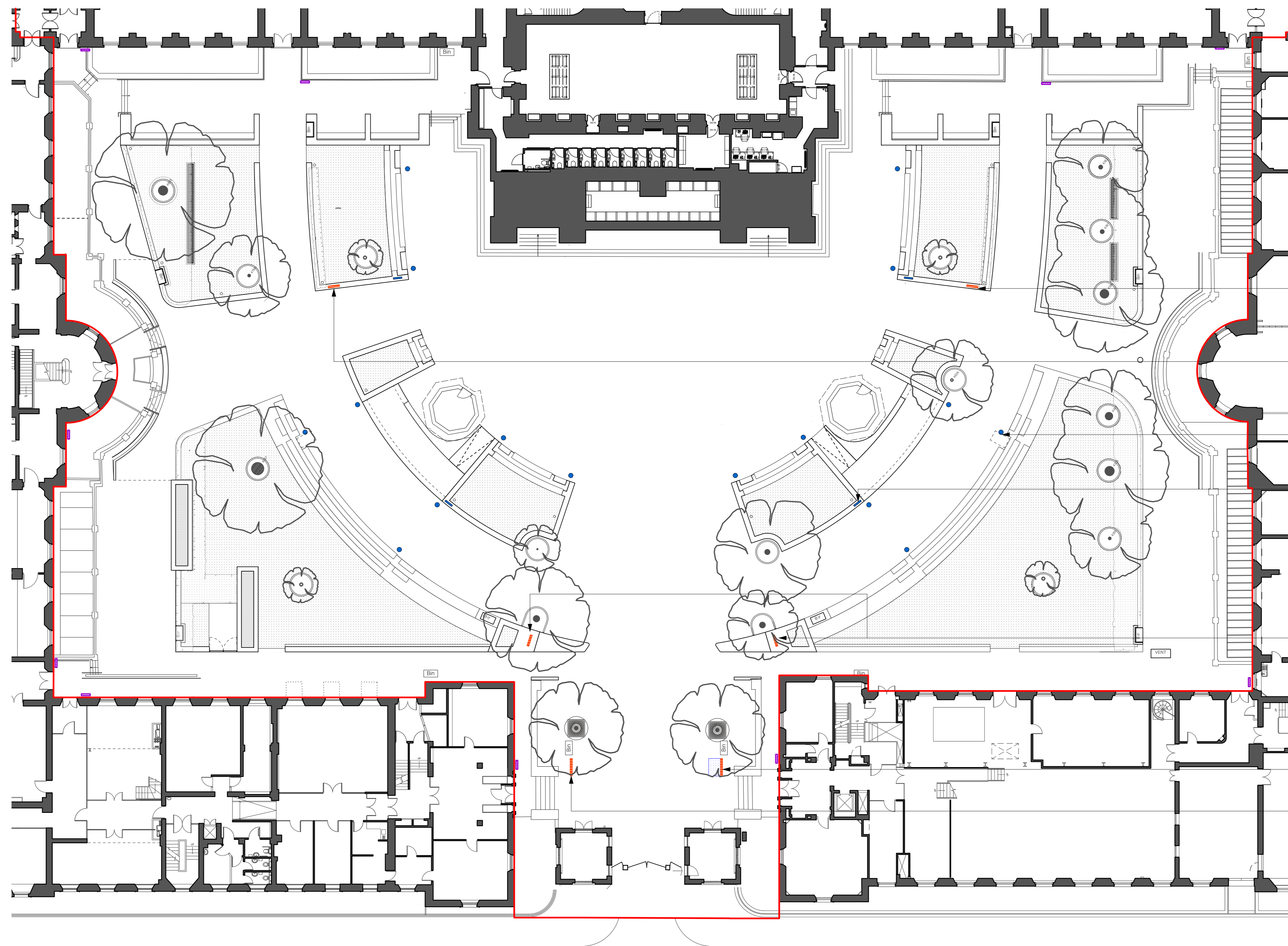


KEY

- Site Boundary

Signage Strategy Key

- Tactile Map
- Digital Signage Totem
- Existing Building Entrance Signage Replaced With Freestanding Signage
- Bookable Event Space Signage Showing Times / Booker
- Bookable Space Area Designation Recessed Within hard landscaping



Totem showing building entrance locations localised to RHS of quad

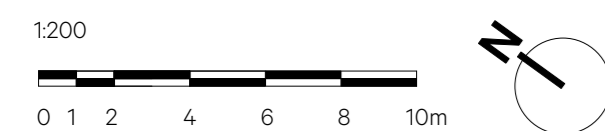
Totem showing building entrance locations localised to LHS of quad

Markings on floor to indicate bookable event space area

Signage to indicate time space is booked from / which group has booked it

Totem at entrance to quad showing Quad Map and location of bookable event spaces & routes to buildings surrounding quad

Totem & Tactile map showing campus plan at entrance to site
Totem showing quad plan and locations of building entrances surrounding



Date	Revision	Reviewed by	Issue Notes
25/07/2024	P4	GW	ISSUED FOR PLANNING
26/02/2025	P5	YF	REVISED PLANNING: RETAINED TREES; 3 NO. ADDITIONAL EXISTING TREES RETAINED; PLANTER, GROUND LEVELS AND ARRANGEMENT AMENDED TO SUIT; ACCESSIBLE PARKING SPACES RELOCATED; 4 NO. TOTAL NEW TREES; 2 NO. LIGHTING COLUMNS RELOCATED TO ACCOMMODATE RETAINED TREES.

NO DIMENSIONS ARE TO BE SCALED FROM THIS DRAWING. THE CONTRACTOR/MANUFACTURER IS RESPONSIBLE FOR CHECKING ALL DIMENSIONS AND QUERING ANY DISCREPANCIES. THIS DRAWING IS THE PROPERTY OF BURWELL ARCHITECTS LTD. COPYRIGHT IS RESERVED BY THEM AND THE DRAWING IS ISSUED ON CONDITION THAT IT IS NOT COPIED, REPRODUCED, RETAINED OR DISCLOSED TO ANY UNAUTHORISED PERSON, EITHER WHOLLY OR IN PART, WITHOUT WRITTEN CONSENT.

Project Title	Project Director	Project No.	Client
UCL Bi-Centennial Main Quad & Wilkins	NB	979	UCL London, WC1E 6BT
Sheet Title	Drawn By	Scale	Design Firm
Signage Strategy	GW	1:200 @ A1	Unit 001 California Building Deals Gateway London SE13 7SB 020 8305 6010
	Date	CAD File Name	info@burwellarchitects.com www.burwellarchitects.com
	19/03/2024	979-G-0040 Series Main Quad GA Plan.vwx	
	Revision	Sheet No.	
	P5	979-G-0045	

Burwell Architects