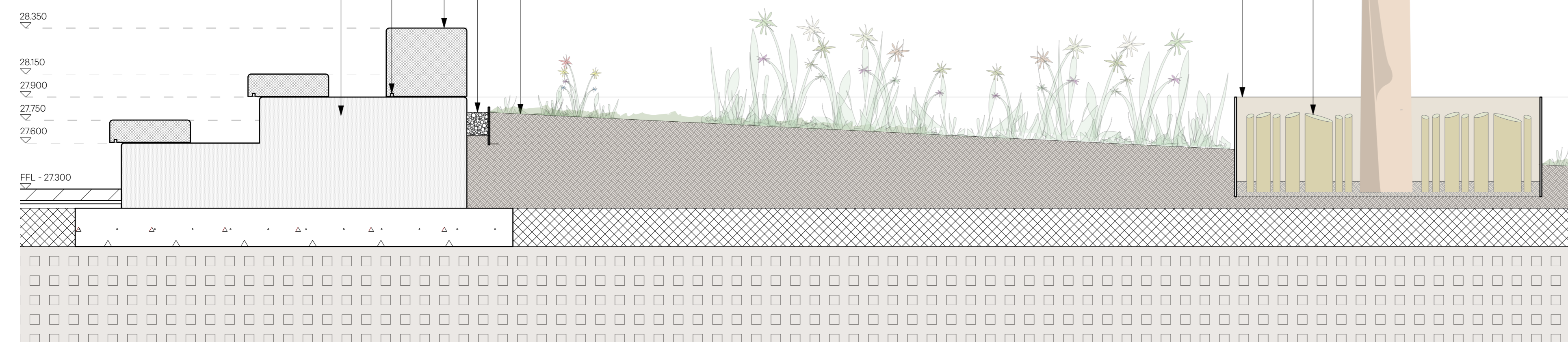
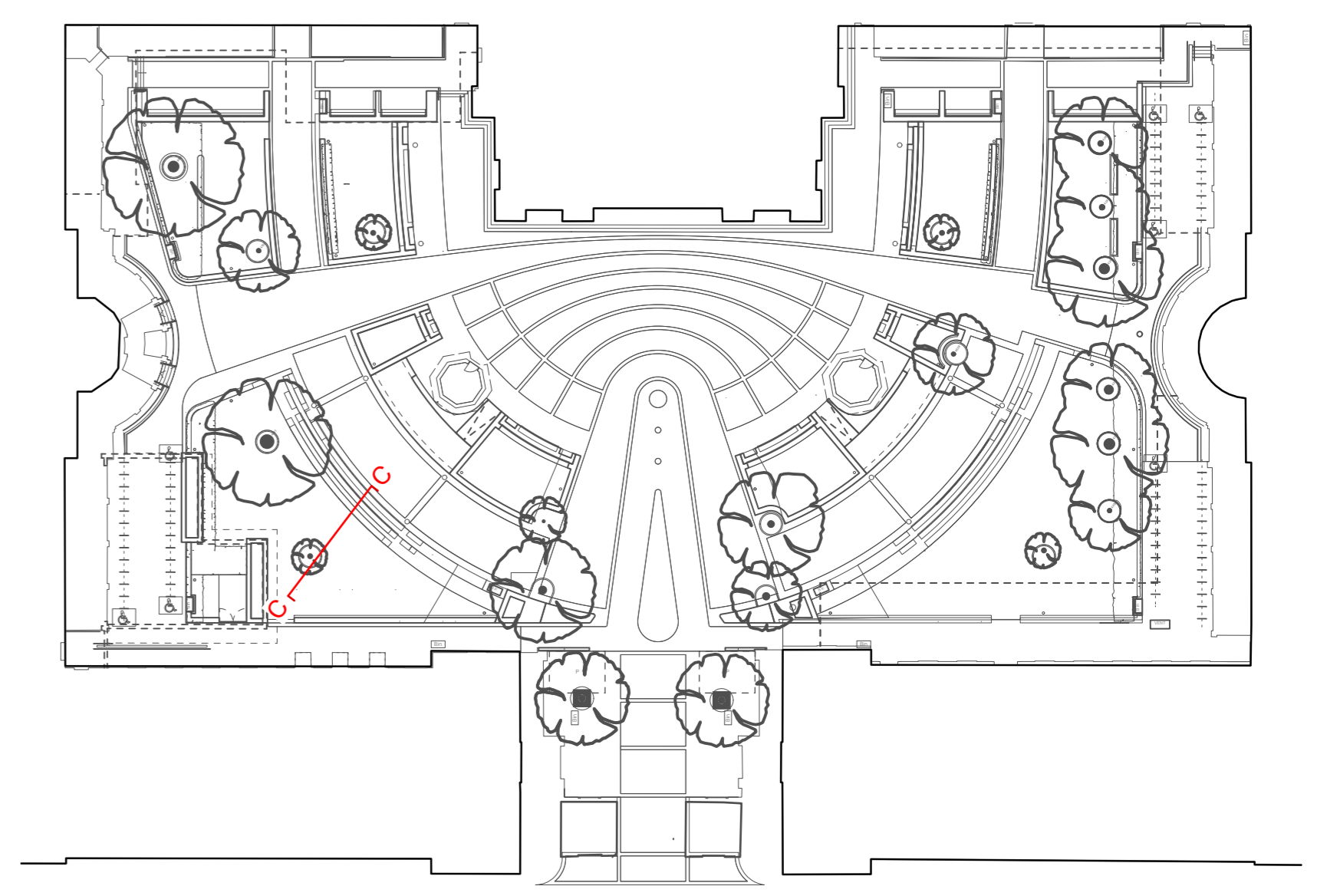


- New tree
- Vertical log pile
- Tree Ring
- Biodiverse grass lawn, with low-fertility sandy loam, free draining
- Gravel border with metal edge trim
- Seating pad – pre-cast wet cast stone – accent colour to match accent colour ground stone finish
- Recessed LED Strip light
- Pre-cast wet cast stone – Portland stone colour



1 Outer Ring Seating - Section C-C
Scale: 120 @ A1

Key Plan



Date	Revision	Reviewed by	Issue Notes
23/07/2024	P1	GW	ISSUED FOR PLANNING – DRAFT
25/07/2024	P2	GW	ISSUED FOR PLANNING
26/02/2025	P3	YF	REVISED PLANNING: RETAINED TREES, PLANTER, GROUND LEVELS AND ARRANGEMENT AMENDED TO SUIT RETAINED TREES.

NO DIMENSIONS ARE TO BE SCALED FROM THIS DRAWING. THE CONTRACTOR/MANUFACTURER IS RESPONSIBLE FOR CHECKING ALL DIMENSIONS AND QUERING ANY DISCREPANCIES. THIS DRAWING IS THE PROPERTY OF BURWELL ARCHITECTS LTD. COPYRIGHT IS RESERVED BY THEM AND THE DRAWING IS ISSUED ON CONDITION THAT IT IS NOT COPIED, REPRODUCED, RETAINED OR DISCLOSED TO ANY UNAUTHORISED PERSON, EITHER WHOLLY OR IN PART, WITHOUT WRITTEN CONSENT.

Project Title	UCL Bi-centennial Main Quad & Wilkins	Project Director	NB	Project No.	979
Drawn By	GW	Scale	1:20 @ A1		
Sheet Title	Typical Planter Sections 2 of 5	Date	05/04/2024	CAD File Name	979-A-0120 Series - Step, Wall & Planter Details v2024.vwx
		Revision	P3	Sheet No.	979-A-0112

Client	UCL London, WC1E 6BT
Design Firm	Unit 001 California Building Deals Gateway London SE13 7SB 020 8305 6010 info@burwellarchitects.com www.burwellarchitects.com

