

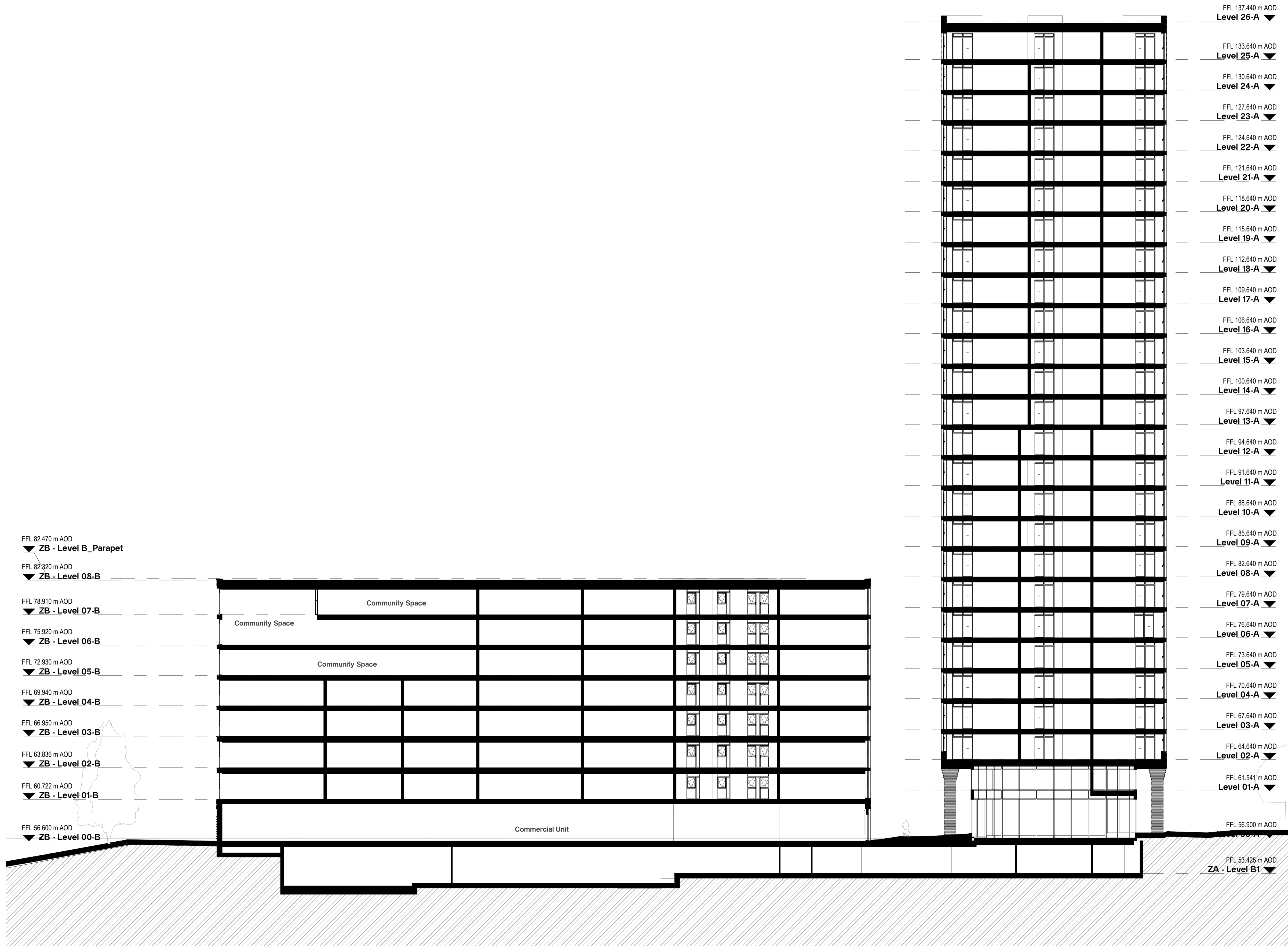
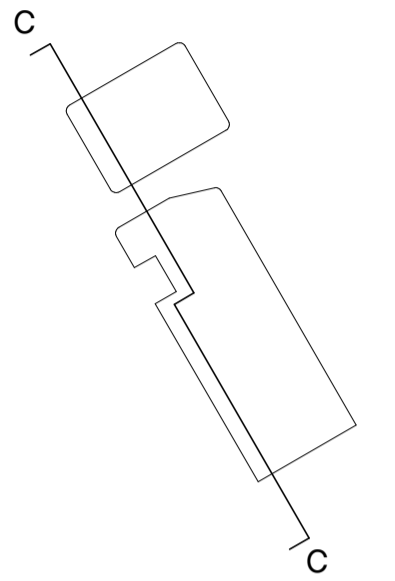
**Notes**  
Unless indicated, this drawing is for information only and should not be used for construction. Do not scale, use figured dimensions only. All dimensions to be checked on site. This drawing should be printed and read at the original size, as stated. Cartwright Pickard Architects accepts no responsibility for errors that occur as a result of reviewing this drawing at any other size.

Cartwright Pickard Architects prepared this drawing using 2024.2 and does not accept liability for any loss or degradation of that information held in the drawing resulting from the translation from the original file format to any other file format or from the recipient's reading of it in any other programme or an earlier version of the programme referred to above. Cartwright Pickard Architects accepts no liability for use of this drawing by parties other than the party for whom it was prepared or for purposes other than those for which it was prepared.

**DWG Issues**  
When this drawing is issued in DWG format it is an uncontrolled version and is provided to enable the recipient to prepare its own documents/drawings for which it is solely responsible. It is based on background information current at the time of issue.

Cartwright Pickard Architects accepts no liability for any alterations to, additions to or discrepancies arising out of changes to such background information which occur after it has been issued by Cartwright Pickard Architects.

**Key Plan**



FFL 82.470 m AOD  
▼ ZB - Level B\_Parapet

FFL 82.320 m AOD  
▼ ZB - Level 08-B

FFL 78.910 m AOD  
▼ ZB - Level 07-B

FFL 75.920 m AOD  
▼ ZB - Level 06-B

FFL 72.930 m AOD  
▼ ZB - Level 05-B

FFL 69.940 m AOD  
▼ ZB - Level 04-B

FFL 66.950 m AOD  
▼ ZB - Level 03-B

FFL 63.836 m AOD  
▼ ZB - Level 02-B

FFL 60.722 m AOD  
▼ ZB - Level 01-B

FFL 56.600 m AOD  
▼ ZB - Level 00-B

FFL 137.440 m AOD  
Level 26-A ▼

FFL 133.640 m AOD  
Level 25-A ▼

FFL 130.640 m AOD  
Level 24-A ▼

FFL 127.640 m AOD  
Level 23-A ▼

FFL 124.640 m AOD  
Level 22-A ▼

FFL 121.640 m AOD  
Level 21-A ▼

FFL 118.640 m AOD  
Level 20-A ▼

FFL 115.640 m AOD  
Level 19-A ▼

FFL 112.640 m AOD  
Level 18-A ▼

FFL 109.640 m AOD  
Level 17-A ▼

FFL 106.640 m AOD  
Level 16-A ▼

FFL 103.640 m AOD  
Level 15-A ▼

FFL 100.640 m AOD  
Level 14-A ▼

FFL 97.640 m AOD  
Level 13-A ▼

FFL 94.640 m AOD  
Level 12-A ▼

FFL 91.640 m AOD  
Level 11-A ▼

FFL 88.640 m AOD  
Level 10-A ▼

FFL 85.640 m AOD  
Level 09-A ▼

FFL 82.640 m AOD  
Level 08-A ▼

FFL 79.640 m AOD  
Level 07-A ▼

FFL 76.640 m AOD  
Level 06-A ▼

FFL 73.640 m AOD  
Level 05-A ▼

FFL 70.640 m AOD  
Level 04-A ▼

FFL 67.640 m AOD  
Level 03-A ▼

FFL 64.640 m AOD  
Level 02-A ▼

FFL 61.541 m AOD  
Level 01-A ▼

FFL 56.900 m AOD

FFL 53.425 m AOD  
ZA - Level B1 ▼

**Section C-C**  
1 : 200



**Drawing Revisions**

Date:	Rev:	Note:	Check:
31.01.25	P01	Section 73 Application Submission	DR



**Client**  
Regal Avenue Road Ltd.

**Project**  
1016 | 100 Avenue Road

**Building Name**  
Tower & Lower Building

**Drawing Title**  
Section C-C

**Scale**  
1: 200 @ A1

**Drawing Created**  
January 2025

**Revision**  
P01

**Drawing No.**  
1016-CPA-ZZ-ZZ-DR-A-0703