

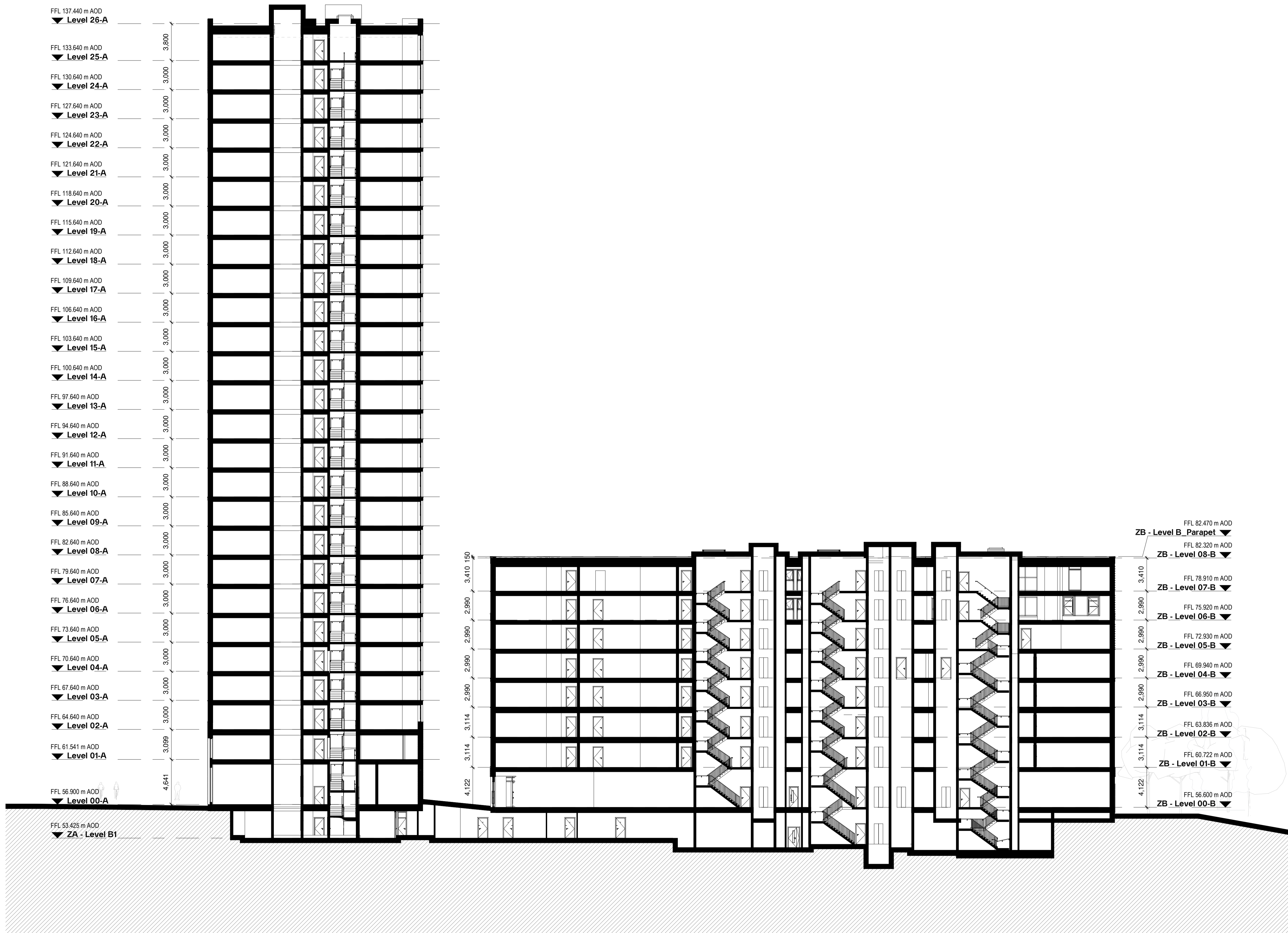
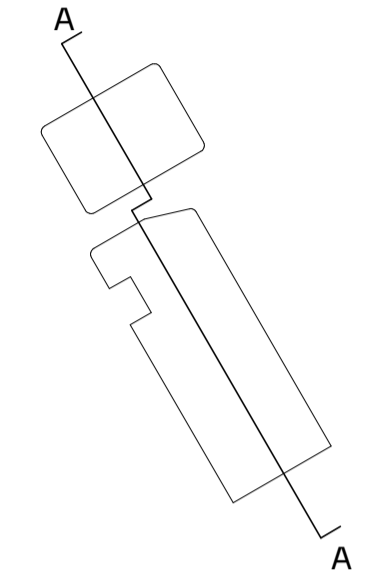
**Notes**  
Unless indicated, this drawing is for information only and should not be used for construction. Do not scale, use figured dimensions only. All dimensions to be checked on site. This drawing should be printed and read at the original size, as stated. Cartwright Pickard Architects accepts no responsibility for errors that occur as a result of reviewing this drawing at any other size.

Cartwright Pickard Architects prepared this drawing using 2024.2 and does not accept liability for any loss or degradation of that information held in the drawing resulting from the translation from the original file format to any other file format or from the recipient's reading of it in any other programme or an earlier version of the programme referred to above. Cartwright Pickard Architects accepts no liability for use of this drawing by parties other than the party for whom it was prepared or for purposes other than those for which it was prepared.

**DWG Issues**  
When this drawing is issued in DWG format it is an uncontrolled version and is provided to enable the recipient to prepare his own documents/drawings for which it is solely responsible. It is based on background information current at the time of issue.

Cartwright Pickard Architects accepts no liability for any alterations to, additions to or discrepancies arising out of changes to such background information which occur after it has been issued by Cartwright Pickard Architects.

**Key Plan**



FFL 137.440 m AOD  
▼ Level 26-A

FFL 133.640 m AOD  
▼ Level 25-A

FFL 130.640 m AOD  
▼ Level 24-A

FFL 127.640 m AOD  
▼ Level 23-A

FFL 124.640 m AOD  
▼ Level 22-A

FFL 121.640 m AOD  
▼ Level 21-A

FFL 118.640 m AOD  
▼ Level 20-A

FFL 115.640 m AOD  
▼ Level 19-A

FFL 112.640 m AOD  
▼ Level 18-A

FFL 109.640 m AOD  
▼ Level 17-A

FFL 106.640 m AOD  
▼ Level 16-A

FFL 103.640 m AOD  
▼ Level 15-A

FFL 100.640 m AOD  
▼ Level 14-A

FFL 97.640 m AOD  
▼ Level 13-A

FFL 94.640 m AOD  
▼ Level 12-A

FFL 91.640 m AOD  
▼ Level 11-A

FFL 88.640 m AOD  
▼ Level 10-A

FFL 85.640 m AOD  
▼ Level 09-A

FFL 82.640 m AOD  
▼ Level 08-A

FFL 79.640 m AOD  
▼ Level 07-A

FFL 76.640 m AOD  
▼ Level 06-A

FFL 73.640 m AOD  
▼ Level 05-A

FFL 70.640 m AOD  
▼ Level 04-A

FFL 67.640 m AOD  
▼ Level 03-A

FFL 64.640 m AOD  
▼ Level 02-A

FFL 61.541 m AOD  
▼ Level 01-A

FFL 56.900 m AOD  
▼ Level 00-A

FFL 53.425 m AOD  
▼ ZA - Level B1

FFL 82.470 m AOD  
ZB - Level B Parapet ▼

FFL 82.320 m AOD  
ZB - Level 08-B ▼

FFL 78.910 m AOD  
ZB - Level 07-B ▼

FFL 75.920 m AOD  
ZB - Level 06-B ▼

FFL 72.930 m AOD  
ZB - Level 05-B ▼

FFL 69.940 m AOD  
ZB - Level 04-B ▼

FFL 66.950 m AOD  
ZB - Level 03-B ▼

FFL 63.836 m AOD  
ZB - Level 02-B ▼

FFL 60.722 m AOD  
ZB - Level 01-B ▼

FFL 56.600 m AOD  
ZB - Level 00-B ▼

**Drawing Revisions**

Date:	Rev:	Note:	Check:
31.01.25	P01	Section 73 Application Submission	DR

CARTWRIGHT PICKARD

**Client**  
Regal Avenue Road Ltd.

**Project**  
1016 | 100 Avenue Road

**Building Name**  
Tower & Lower Building

**Drawing Title**  
Section A-A

**Scale**  
1:200 @ A1

**Drawing Created**  
July 2024

**Revision**  
P01

**Drawing No.**  
1016-CPA-ZZ-ZZ-DR-A-0701

London Office  
3 Canal Side Studios  
8-14 St Pancras Way  
London NW1 0QS  
Tel 020 7554 3830

cartwrightpickard.com  
© Cartwright Pickard Architects Ltd.

**Section A-A Northern and Southern Block**  
1 : 200

