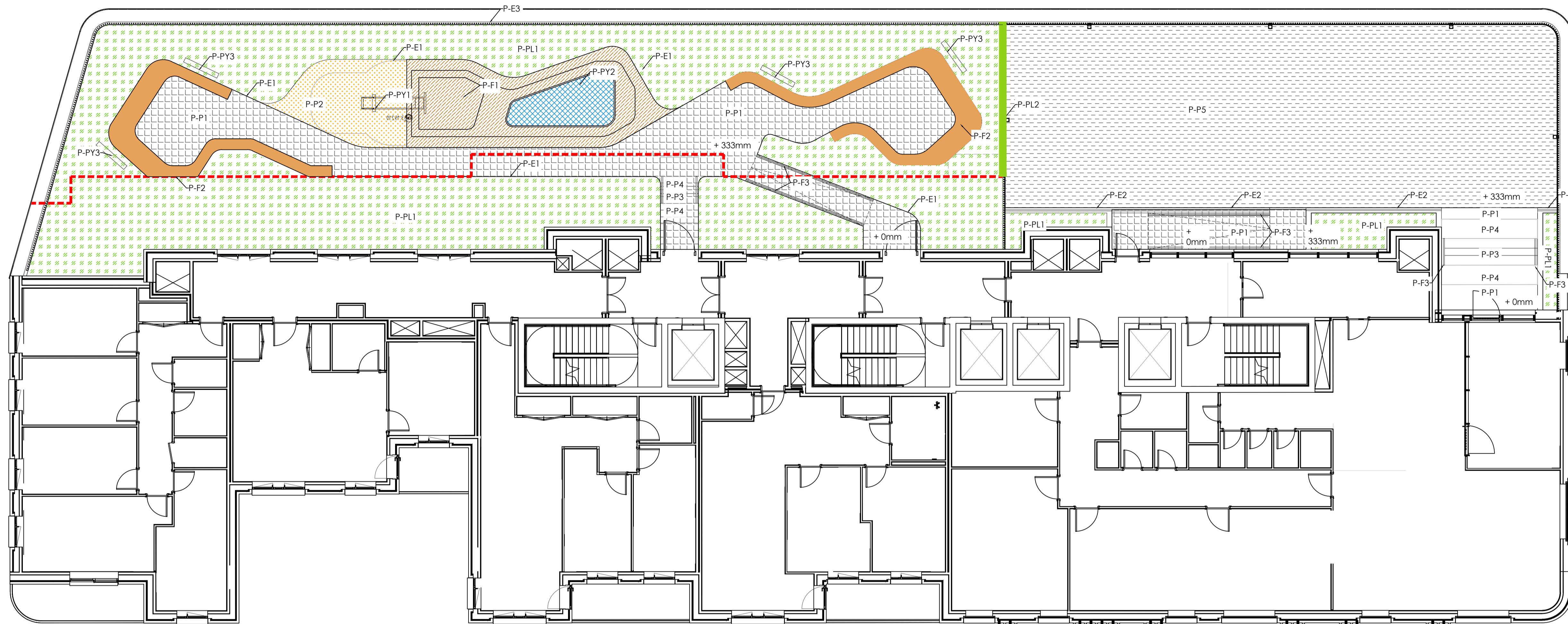
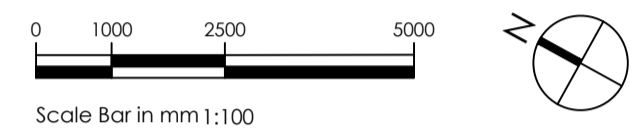


NOTES:

1. This drawing is to be read in conjunction with all relevant contract documentation from the design team, with any conflicting information to be brought to the attention of Turkington Martin Landscape Architects in writing before commencing on site.
2. The contractor is to check and verify all levels and dimensions before construction. Any discrepancies are to be brought to the attention of Turkington Martin Landscape Architects in writing before commencing on site.
3. All dimensions in mm, unless otherwise stated.
4. Do not scale from this drawing.
5. All sub base and concrete design and specification to engineer's details. All diagrams provided here are purely indicative.
6. Waterproofing of any element to be specified by others.
7. All proprietary products shall be installed in accordance with manufacturers written instructions.
8. Plant numbers are an indication only and plants should be ordered to suit site areas in accordance with scheduled plant densities.
9. Any proposed plant substitution shall be agreed with the landscape architect prior to ordering.



Materials & Edges Schedule

Paving	
P-P1 	Porcelain tiles
P-P2 	Wetpour Play Surface
P-P3	PCC steps
P-P4	Hazard corduroy paving
P-P5 	The Winch sport surface
P-E1	Raised steel edge
P-E2	Concrete/brick retaining wall to ramp/steps
P-E3	Balustrade min 1100mm above planting finish level, to architect's details
P-E4	Fencing between play area and Winch outdoor space, to architect's details, to be coordinated to accommodate climbing plants

Furniture & Play equipment Schedule

Paving	
P-F1 	Tiered timber platform, hardwood timber, PPC, with steel frame to perimeter
P-F2 	Brick and timber seating, 450mm height
P-F3	Balustrade to steps/ramp
P-PY1	Stainless steel slide, with raised sides
P-PY2	Play net within timber platform
P-PY3	Mix of sensory play equipment, to be installed within planting: <i>Optic & haptic sensory play equipment, indicatively: Spinning discs, finger labyrinth, prism</i>

Planting

P-PL1 	Podium planting <i>Achillea 'Terracotta'</i> <i>Agastache 'Blue Fortune'</i> <i>Calamagrostis x acutiflora 'Karl Foerster'</i> <i>*Cornus sanguinea 'Anny's Winter Orange'</i> <i>Deschampsia caespitosa</i> <i>Helenium 'Moerheim Beauty'</i> <i>Kniphofia 'Tawny King'</i> <i>Miscanthus sinensis 'Morning Light'</i> <i>Lavandula x intermedia</i> <i>Panicum virgatum 'Heavy Metal'</i> <i>Persicaria amplexicaulis 'Firetail'</i> <i>Phlomis russeliana</i> <i>Pittosporum tobira</i> <i>Rudbeckia fulgida 'Goldsturm'</i> <i>Salvia x sylvestris 'Mainacht'</i> <i>Santolina rosmarinifolia</i> <i>Verbena bonariensis</i>
P-PL2 	Climbing plants <i>Lonicera periclymenum (honeysuckle)</i> <i>Hedera (ivy)</i>

----- 3m zone offset from facade - only class A fire rated finishes

DATE	DRAWN	DESCRIPTION OF REVISION	REVISION LETTER	CHECKED BY
2024.07.27	NG	for planning 003	P03	JT
2024.12.12	NG	for planning draft	P02	JT
2024.09.02	NG	for information	P01	JT

turkington martin

Unit 2, Floor 2, Building C1, Design District,
Soames Walk, London SE10 0BG
T: +44 (0)20 3909 5979
E: studio@turkingtonmartin.com

CLIENT
Regal
PROJECT TITLE
100 Avenue Road
DRAWING TITLE
Podium GA
DRAWING STATUS
For Planning

DRAWING SCALE: 1:100
DRAWN BY: NG
PAPER SIZE: A1
CHECKED BY: JT
DRAWN DATE: 2024.09.02
CHECKED DATE: 2024.09.02

DRAWING NUMBER: AR657-TML-ZZ-ZZ-DR-L-0200
REVISION: P03

Turkington Martin LANDSCAPE ARCHITECTS