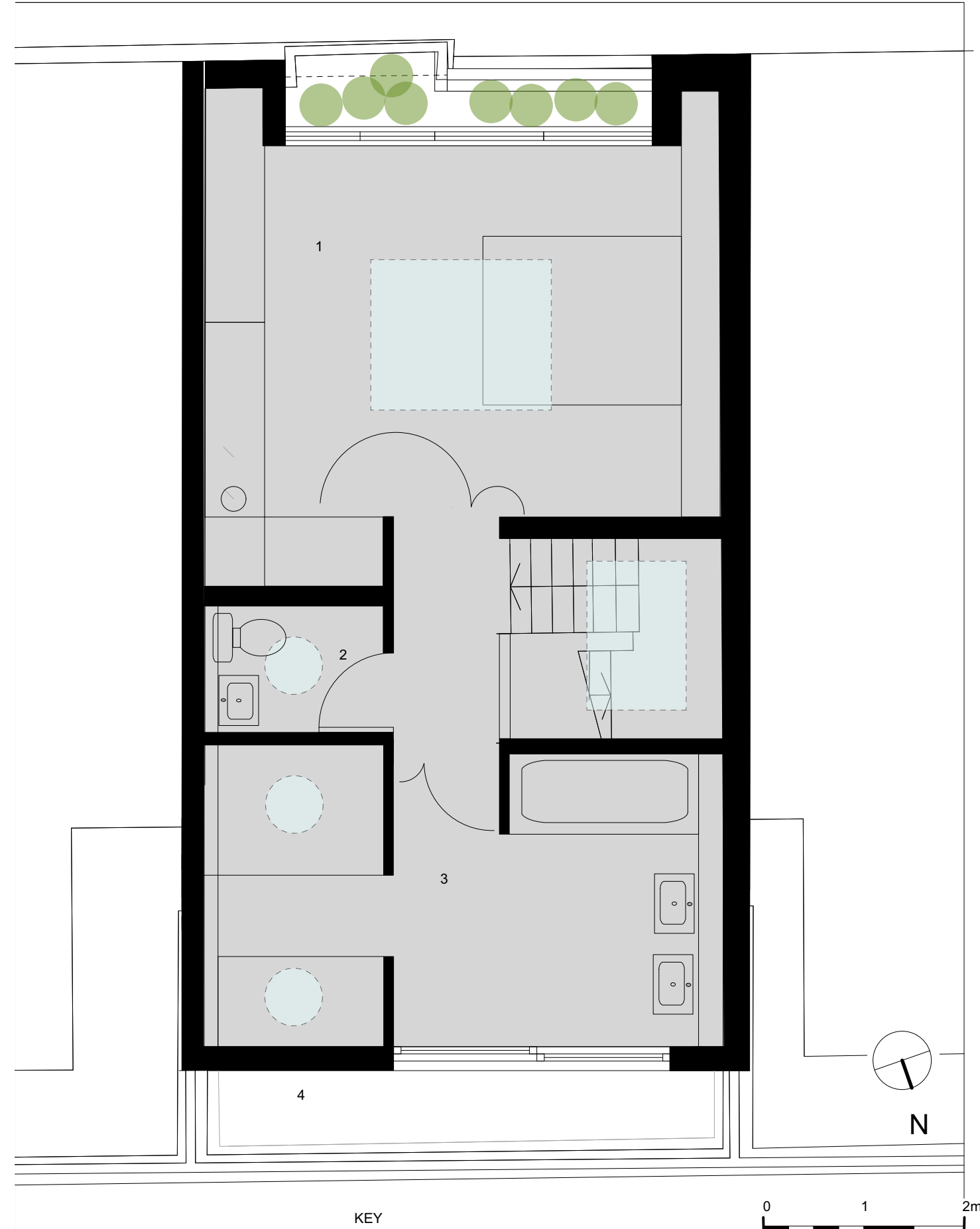


EXISTING THIRD FLOOR PLAN

Floor Area: 12.6m sq
Roof Terrace: 40.8m sq

KEY

- 1 STUDY
- 2 ROOF TERRACE

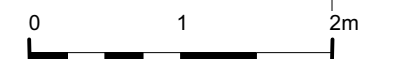


PROPOSED THIRD FLOOR PLAN

Floor Area: 46.7m sq
Roof Terrace: 6.7m sq

KEY

- 1 BEDROOM
- 2 WC
- 3 BATHROOM
- 4 BALCONY



LUCY MARSTON