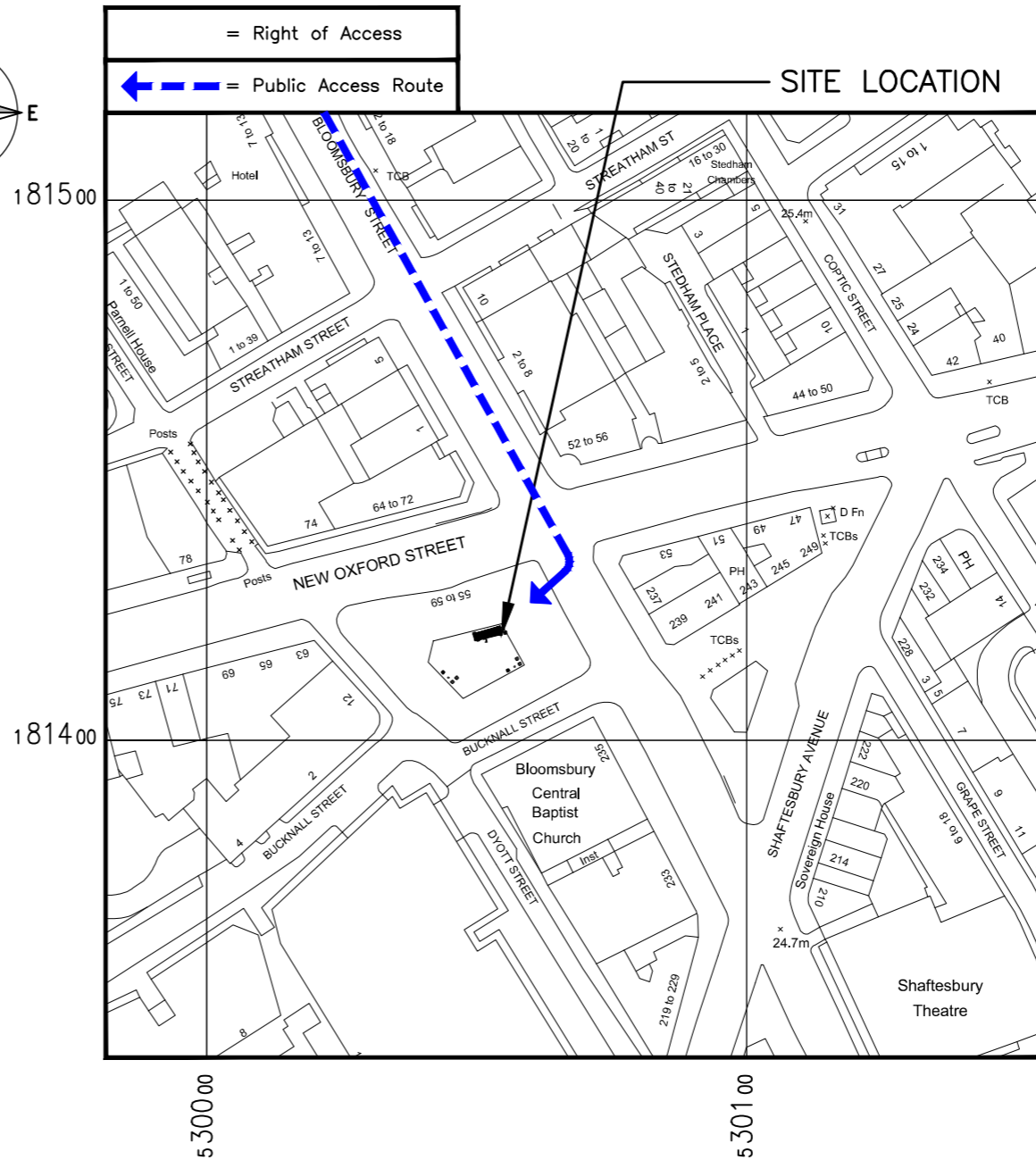
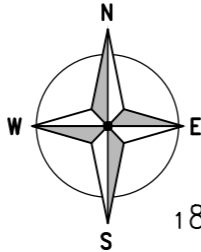


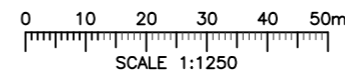
**SITE LOCATION**  
(Scale 1:50000)

Ordnance Survey map extract based upon Landranger map series with the permission of the controller of Her Majesty's Stationery Office Licence No. 100060010 Crown copyright.



**DETAILED SITE LOCATION**  
(Scale 1:1250)

Based upon Ordnance Survey map extract with the permission of the Controller of Her Majesty's Stationery Office. Crown copyright. Licence No. 100060010



**SITE PHOTOGRAPH**

These drawings comply with VF Standard ICNIRP guidelines, under configuration VU7F/5UR  
Designed in accordance with Cornerstone documents: SDN0007 & SDN0009 v7.0

**Notes**  
SECTOR 2 REQUIRES STEP DOWN TO AVOID BUILDING TO SOUTH WEST

ALL DIMENSIONS ARE IN mm UNLESS NOTED OTHERWISE

N.G.R | E: 530052 N: 181421

**DIRECTIONS TO SITE:**  
TRAVELLING ON THE M1 TOWARDS LONDON, EXIT AT JCT. 2 AND TAKE THE A41 HEADING FOR LONDON. CONTINUE FOR APPROX. 13.0km, THEN AT JCT. WITH THE A501, TURN RIGHT ONTO THE A501 PENTONVILLE ROAD. CONTINUE ON THE A501 FOR APPROX. 2.0km, BEFORE TURNING LEFT ONTO THE A400 GOWER STREET. CONTINUE FOR APPROX. 1.0km, ROAD BECOMES BLOOMSBURY STREET. AT THE JCT. WITH THE A40 NEW OXFORD STREET, ALBION HOUSE IS LOCATED ON THE OPPOSITE SIDE OF ROAD ON THE RIGHT HAND SIDE.

NOTES:

B	Site Redesign	BTM	SGF	28.11.24
A	Issued for Approval	PD	DW	21.06.19
REV	MODIFICATION	BY	CH	DATE

Unit E, Madison Place, Northampton Road, Manchester, M40 5AG  
Tel: 0161 785 4500  
Fax: 0161 785 4501  
Web: www.clarke-telecom.com

**CORNERSTONE - NON BEACON**

Cell Name		Opt.
ALBION HOUSE		-
Cell ID No		
CTIL	VMO2	VF
242202	N/A	15321

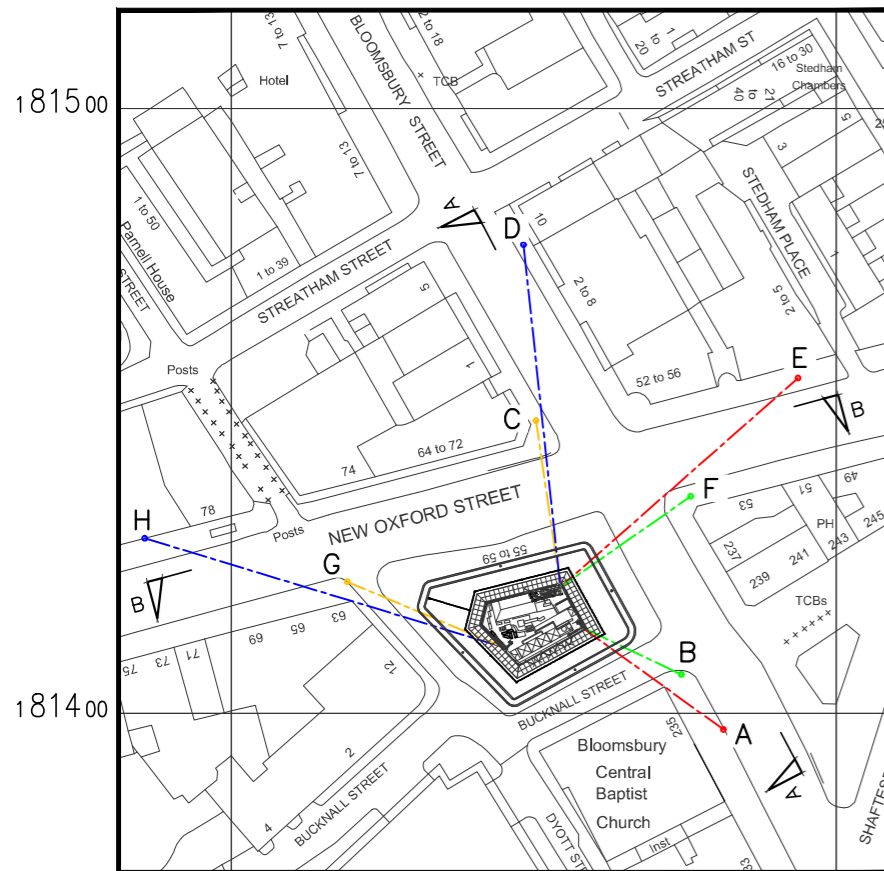
**Site Address / Contact Details**  
ALBION HOUSE  
55-59 NEW OXFORD STREET  
LONDON  
WC1A 1BS

Drawing Title: SITE LOCATION MAPS				
Purpose of issue: PLANNING				Dwg Rev:
Drawing Number: 100				B
Surveyed By: DW	Original Sheet Size: A3		Pack Issue:	
Drawn: PD	Date: 21.06.19	Checked: DW	Date: 21.06.19	H

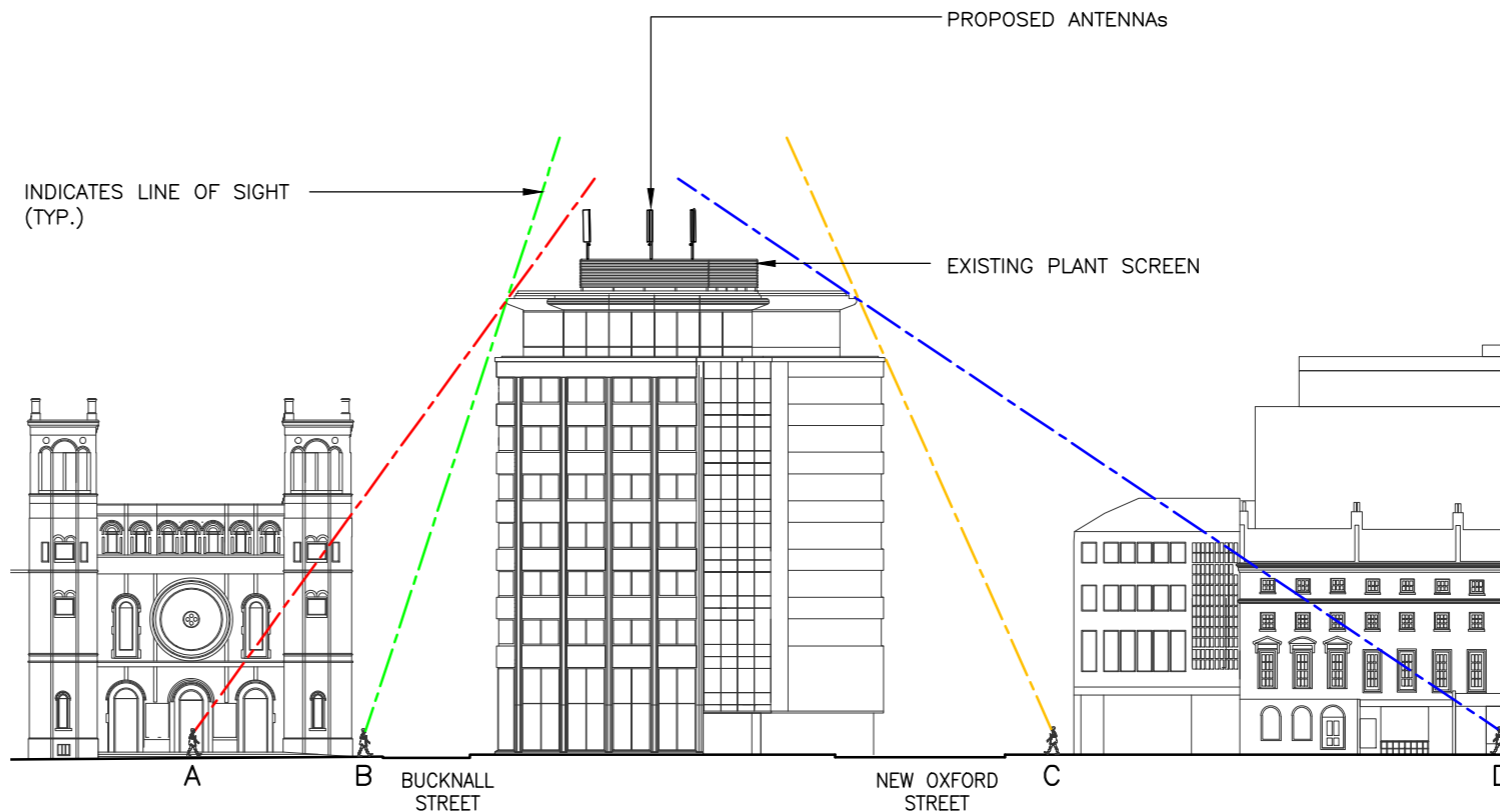
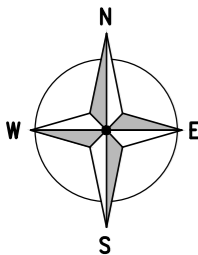


ALL DIMENSIONS ARE IN mm UNLESS NOTED OTHERWISE

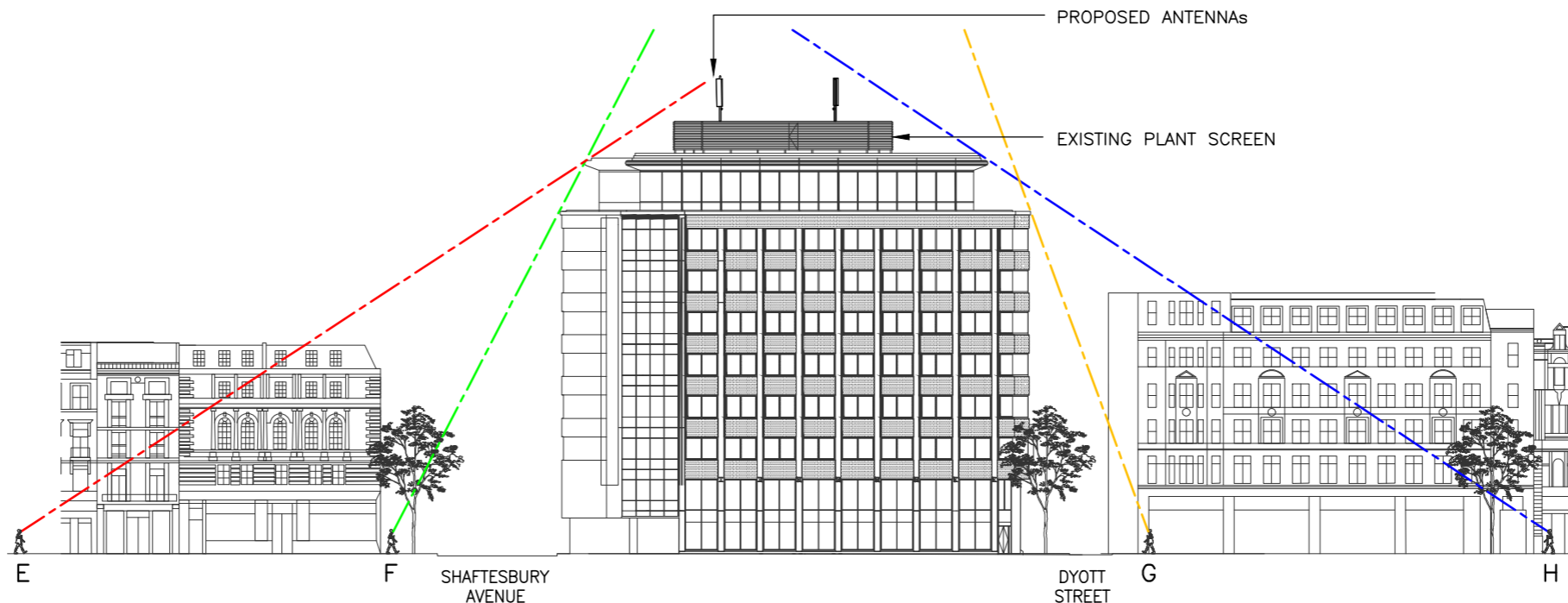
N.G.R | E: 530052 N: 181421



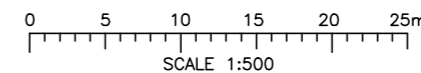
**SITE LINE PLAN**  
(Scale 1:1250)



**ELEVATION A - A**  
(1:500)



**ELEVATION B - B**  
(1:500)



D	Site Redesign	BTM	SCF	28.11.24
C	Sight line E revised	CJ	SCF	07.04.21
B	Dishes revised	DP	SCF	19.11.20
A	Issued for Approval	PD	JH	04.07.19
REV	MODIFICATION	BY	CH	DATE

**CLARKE telecom**  
Unit E, Madison Place, Northampton Road,  
Manchester, M40 5AG  
Tel: 0161 785 4500  
Fax: 0161 785 4501  
Web: www.clarke-telecom.com



**CORNERSTONE - NON BEACON**

Cell Name		Opt.
ALBION HOUSE		-
Cell ID No		
CTIL	VMO2	VF
242202	N/A	15321

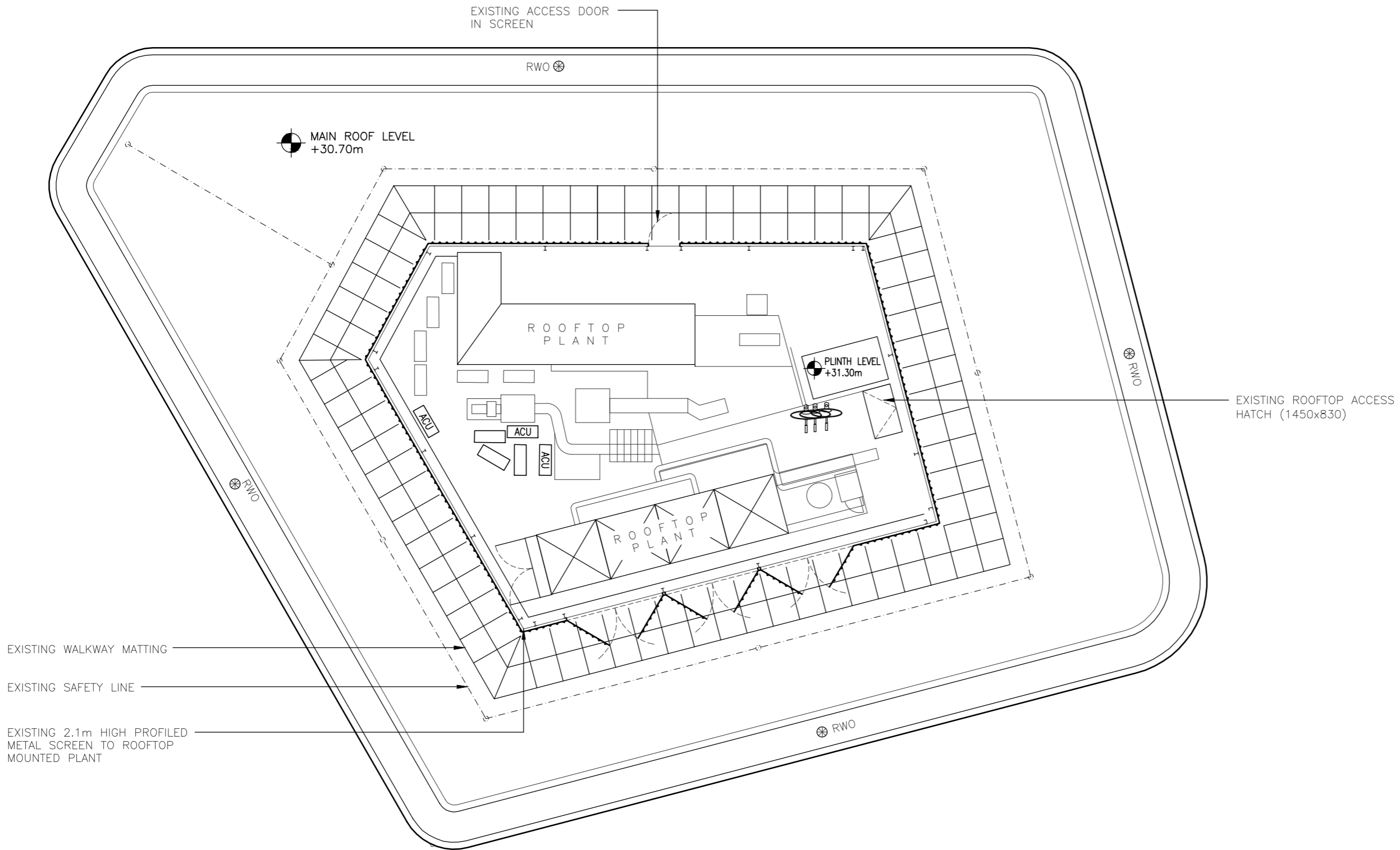
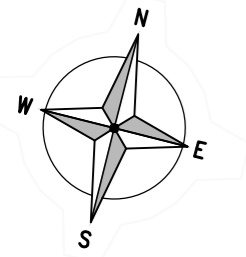
Site Address / Contact Details

ALBION HOUSE  
55-59 NEW OXFORD STREET  
LONDON  
WC1A 1BS

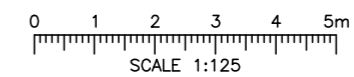
Drawing Title:		SIGHT LINE DRAWING	
Purpose of issue:		PLANNING	
Drawing Number:		110	
Dwg Rev:		D	
Surveyed By:	DW	Original Sheet Size:	A3
Drawn:	PD	Date:	03.07.19
Checked:	JH	Date:	03.07.19
Pack Issue:	H		

These drawings comply with VF Standard ICNIRP guidelines, under configuration VU7F/5UR  
Designed in accordance with Cornerstone documents: SDN0007 & SDN0009 v7.0

**Notes**  
SECTOR 2 REQUIRES STEP DOWN TO AVOID BUILDING TO SOUTH WEST



EXISTING SITE PLAN  
(1:125)



ALL DIMENSIONS ARE IN mm UNLESS NOTED OTHERWISE

N.G.R | E: 530052 N: 181421

NOTES:

REV	A	Issued for Approval	PD	DW	21.06.19
		MODIFICATION	BY	CH	DATE

**CLARKE telecom**  
Unit E, Madison Place, Northampton Road,  
Manchester, M40 5AG  
Tel: 0161 785 4500  
Fax: 0161 785 4501  
Web: www.clarke-telecom.com



**CORNERSTONE - NON BEACON**

Cell Name	Opt.
ALBION HOUSE	-

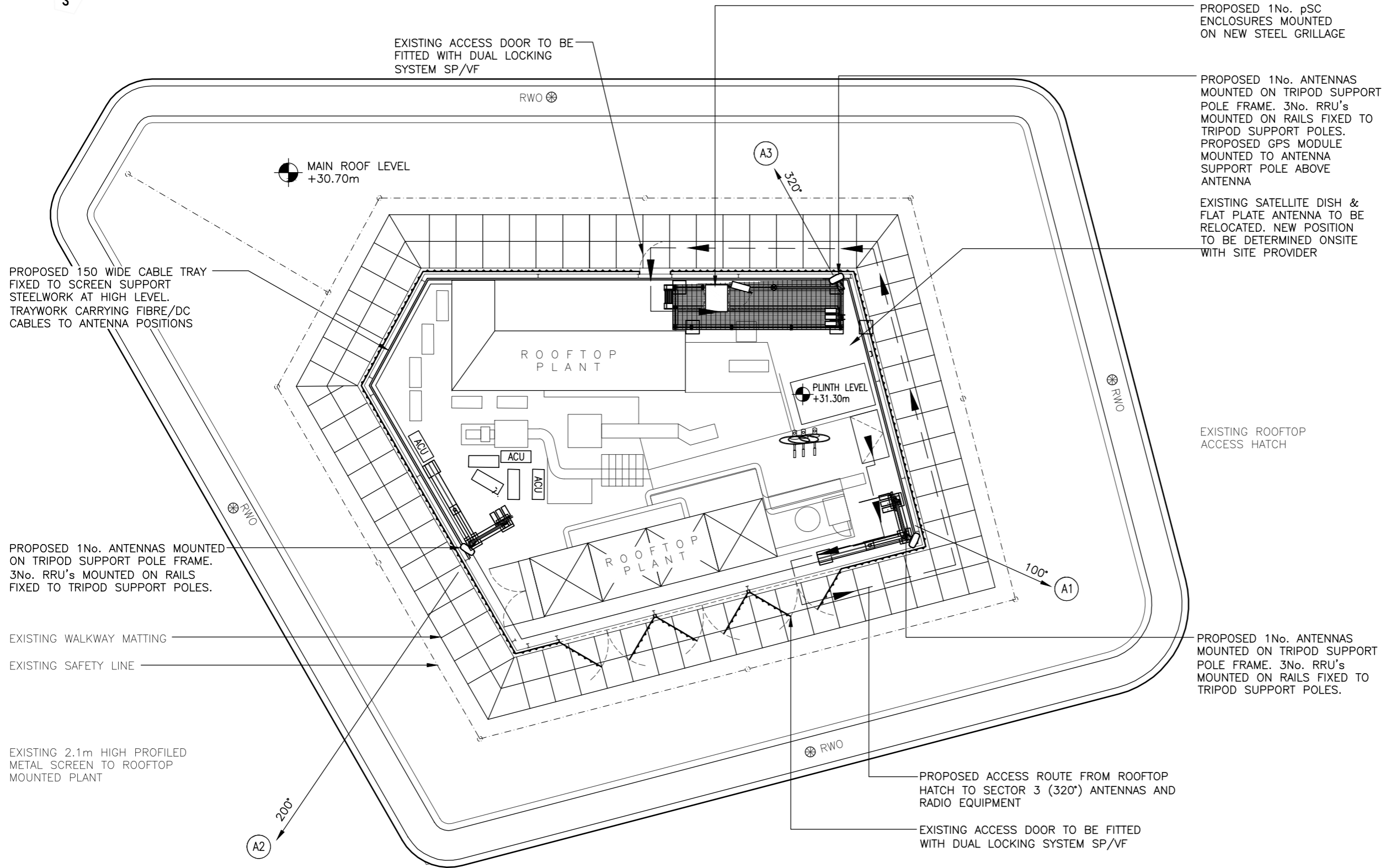
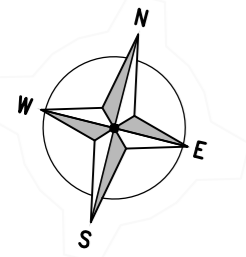
Cell ID No		
CTIL	VMO2	VF
242202	N/A	15321

Site Address / Contact Details  
ALBION HOUSE  
55-59 NEW OXFORD STREET  
LONDON  
WC1A 1BS

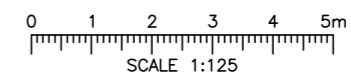
Drawing Title:  
EXISTING SITE PLAN

Purpose of issue:	PLANNING	Dwg Rev:
Drawing Number:	200	A

Surveyed By:	DW	Original Sheet Size:	A3	Pack Issue:
Drawn:	PD	Date:	21.06.19	Checked:
				DW
			21.06.19	H



**PROPOSED SITE PLAN**  
(1:125)



ALL DIMENSIONS ARE IN mm UNLESS NOTED OTHERWISE

N.G.R | E: 530052 N: 181421

**NOTES:**

FURTHER INVESTIGATION REQUIRED ONSITE TO DETERMINE;

- 1). THE PROPOSED ROUTE OF ELECTRICAL SUBMAIN & COMMS CABLES TO ROOFTOP.
- 2). FINAL POSITIONS OF EXISTING SITE PROVIDER EQUIPMENT TO BE RELOCATED. (AIR CONDITIONING CONDENSER UNITS, SATELLITE DISH & FLAT PANEL ANTENNA).
- 3). THE EXTENT & MAKE UP OF THE EXISTING ROOF STRUCTURE & ROOF FINISHES.
- 4). PROPOSED LOCATION OF CRANE SET DOWN SPACE AT GROUND LEVEL

E	Site Redesign	BTM	SGF	28.11.24
D	Sector 3 antenna location moved	GJ	SGF	07.04.21
C	Dishes revised	DP	SGF	19.11.20
B	Layout revised	GJ	DW	14.10.20
A	Issued for Approval	PD	DW	21.06.19
REV	MODIFICATION	BY	CH	DATE

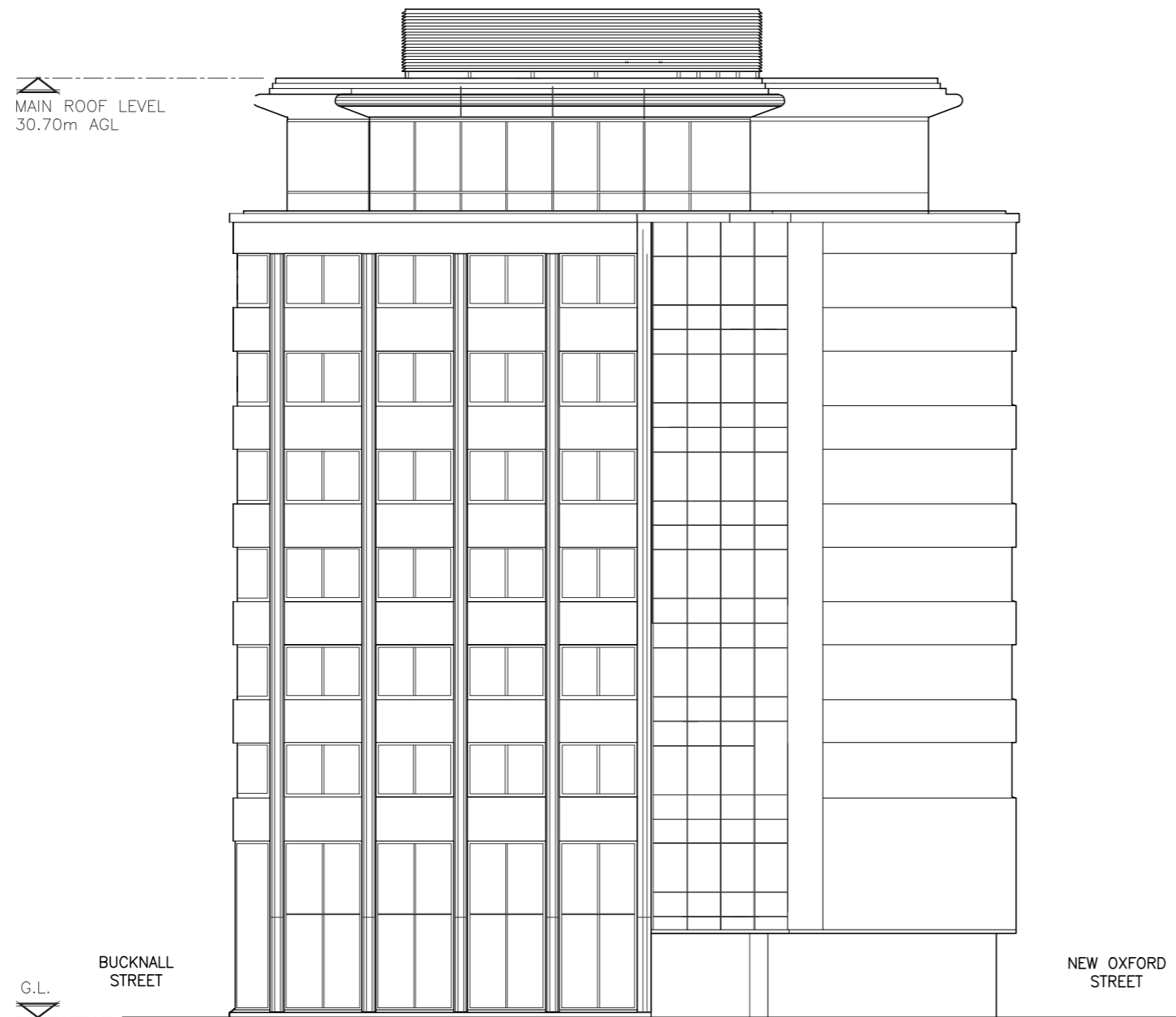
**CLARKE telecom**  
Unit E, Madison Place, Northampton Road,  
Manchester, M40 5AG  
Tel: 0161 785 4500  
Fax: 0161 785 4501  
Web: www.clarke-telecom.com

**vodafone**  
CORNERSTONE - NON BEACON

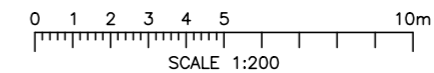
Cell Name		Opt.
ALBION HOUSE		-
Cell ID No		
CTIL	VMO2	VF
242202	N/A	15321

**Site Address / Contact Details**  
ALBION HOUSE  
55-59 NEW OXFORD STREET  
LONDON  
WC1A 1BS

Drawing Title: PROPOSED SITE PLAN			
Purpose of issue: PLANNING			Dwg Rev: E
Drawing Number: 201			
Surveyed By: DW	Original Sheet Size: A3		Pack Issue: H
Drawn: PD	Date: 21.06.19	Checked: DW	Date: 21.06.19



EXISTING NORTH EAST ELEVATION  
(1:200)



ALL DIMENSIONS ARE IN mm UNLESS NOTED OTHERWISE

N.G.R | E: 530052 | N: 181421

NOTES:

REV	MODIFICATION	BY	CH	DATE
A	Issued for Approval	PD	DW	21.06.19

**CLARKE**  
**telecom**  
Unit E, Madison Place, Northampton Road,  
Manchester, M40 5AG  
Tel: 0161 785 4500  
Fax: 0161 785 4501  
Web: www.clarke-telecom.com



**CORNERSTONE - NON BEACON**

Cell Name	Opt.
ALBION HOUSE	-

Cell ID No		
CTIL	VMO2	VF
242202	N/A	15321

Site Address / Contact Details  
ALBION HOUSE  
55-59 NEW OXFORD STREET  
LONDON  
WC1A 1BS

Drawing Title:  
EXISTING NORTH EAST ELEVATION

Purpose of issue:	PLANNING	Dwg Rev:
Drawing Number:	300	A

Surveyed By:	DW	Original Sheet Size:	A3	Pack Issue:				
Drawn:	PD	Date:	21.06.19	Checked:	DW	Date:	21.06.19	H

ALL DIMENSIONS ARE IN mm UNLESS NOTED OTHERWISE

N.G.R | E: 530052 | N: 181421

NOTES:

PROPOSED 1No. ANTENNAS MOUNTED ON TRIPOD SUPPORT POLE FRAME. 3No. RRU's MOUNTED ON RAILS FIXED TO TRIPOD SUPPORT POLES

PROPOSED 1No. ANTENNAS MOUNTED ON TRIPOD SUPPORT POLE FRAME. 3No. RRU's MOUNTED ON RAILS FIXED TO TRIPOD SUPPORT POLES

PROPOSED GPS MODULE MOUNTED TO ANTENNA SUPPORT POLE ABOVE ANTENNA

PROPOSED 1No. ANTENNAS MOUNTED ON TRIPOD SUPPORT POLE FRAME. 3No. RRU's MOUNTED ON RAILS FIXED TO TRIPOD SUPPORT POLES

PROPOSED 1No. PSC ENCLOSURES MOUNTED ON NEW STEEL GRILLAGE

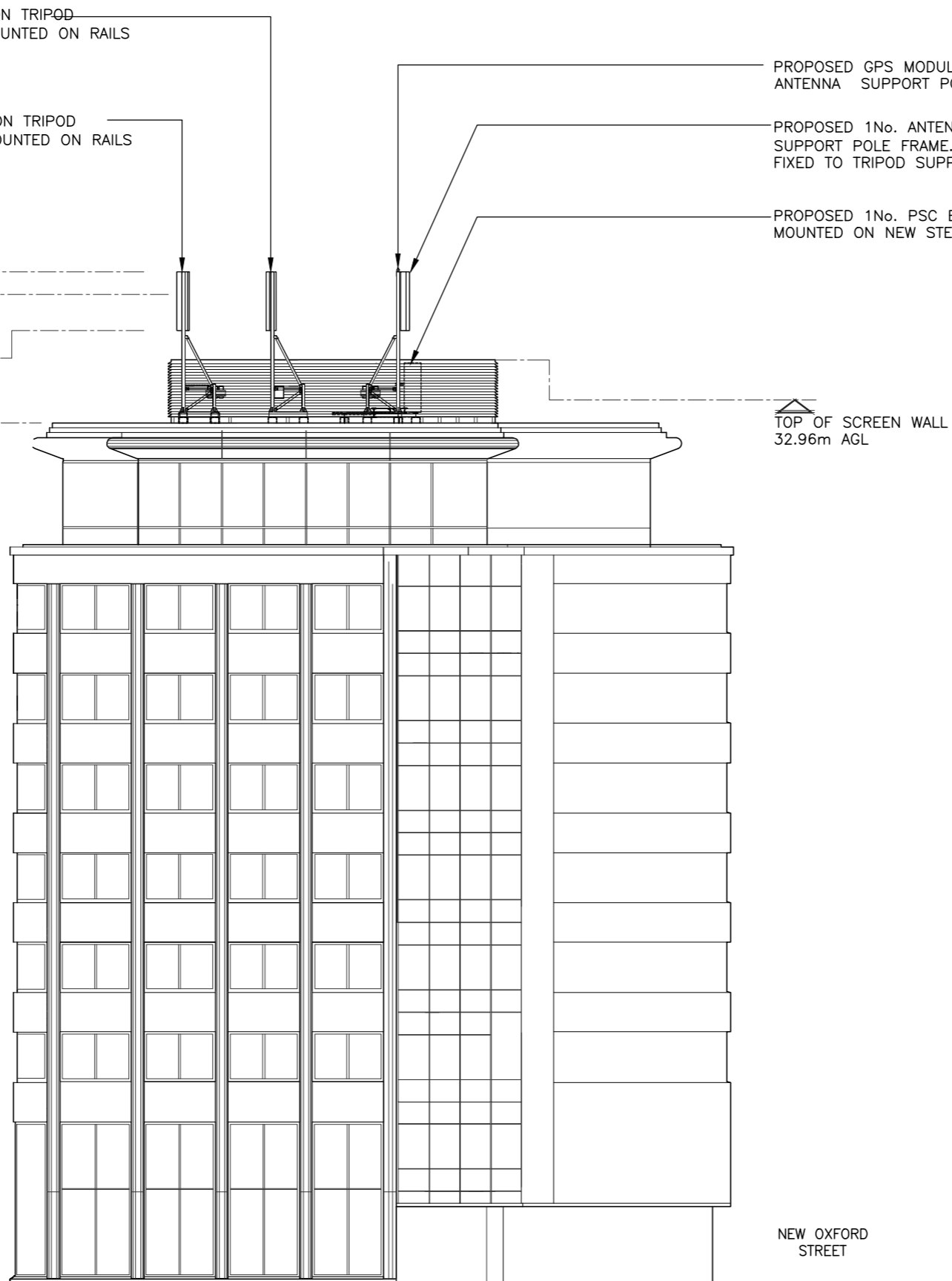
TOP OF ANTENNAS  
36.10m AGL

U/S OF ANTENNAS  
35.30m AGL

U/S OF ANTENNAS  
34.00m AGL

MAIN ROOF LEVEL  
30.70m AGL

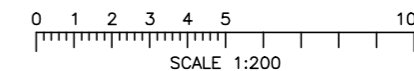
TOP OF SCREEN WALL  
32.96m AGL



G.L.  
BUCKNALL STREET

NEW OXFORD STREET

PROPOSED NORTH EAST ELEVATION  
(1:200)



REV	MODIFICATION	BY	CH	DATE
E	Site Redesign	BTM	SGF	28.11.24
D	Sector 3 antenna location moved	GJ	SGF	07.04.21
C	Dishes revised	DP	SGF	19.11.20
B	Layout revised	GJ	DW	14.10.20
A	Issued for Approval	PD	DW	21.06.19

**CLARKE telecom**  
Unit E, Madison Place, Northampton Road,  
Manchester, M40 5AG  
Tel: 0161 785 4500  
Fax: 0161 785 4501  
Web: www.clarke-telecom.com

**vodafone**  
CORNERSTONE - NON BEACON

Cell Name	Opt.
ALBION HOUSE	-

Cell ID No		
CTIL	VMO2	VF
242202	N/A	15321

Site Address / Contact Details  
ALBION HOUSE  
55-59 NEW OXFORD STREET  
LONDON  
WC1A 1BS

Drawing Title:  
PROPOSED NORTH EAST ELEVATION

Purpose of issue:	PLANNING	Dwg Rev:
Drawing Number:	301	E

Surveyed By:	DW	Original Sheet Size:	A3	Pack Issue:				
Drawn:	PD	Date:	21.06.19	Checked:	DW	Date:	21.06.19	H

These drawings comply with VF Standard ICNIRP guidelines, under configuration VU7F/5UR  
Designed in accordance with Cornerstone documents: SDN0007 & SDN0009 v7.0

**Notes**  
SECTOR 2 REQUIRES STEP DOWN TO AVOID BUILDING TO SOUTH WEST

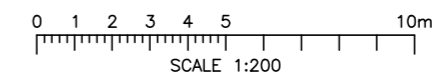
ALL DIMENSIONS ARE IN mm UNLESS NOTED OTHERWISE

N.G.R | E: 530052 | N: 181421

NOTES:



EXISTING NORTH WEST ELEVATION  
(1:200)



REV	A	Issued for Approval	GJ	DW	24.02.20
		MODIFICATION	BY	CH	DATE

**CLARKE telecom**  
Unit E, Madison Place, Northampton Road,  
Manchester, M40 5AG  
Tel: 0161 785 4500  
Fax: 0161 785 4501  
Web: www.clarke-telecom.com

**vodafone**  
CORNERSTONE - NON BEACON

Cell Name	Opt.
ALBION HOUSE	-

Cell ID No		
CTIL	VMO2	VF
242202	N/A	15321

Site Address / Contact Details  
ALBION HOUSE  
55-59 NEW OXFORD STREET  
LONDON  
WC1A 1BS

Drawing Title:  
EXISTING NORTH WEST ELEVATION

Purpose of issue:	PLANNING	Dwg Rev:
-------------------	----------	----------

Drawing Number:	302	A
-----------------	-----	---

Surveyed By:	DW	Original Sheet Size:	A3	Pack Issue:
--------------	----	----------------------	----	-------------

Drawn:	PD	Date:	21.06.19	Checked:	DW	Date:	21.06.19	H
--------	----	-------	----------	----------	----	-------	----------	---



ALL DIMENSIONS ARE IN mm UNLESS NOTED OTHERWISE

N.G.R | E: 530052 | N: 181421

NOTES:

PROPOSED 1No. PSC ENCLOSURES MOUNTED ON NEW STEEL GRILLAGE

PROPOSED 1No. ANTENNAS MOUNTED ON TRIPOD SUPPORT POLE FRAME. 3No. RRU's MOUNTED ON RAILS FIXED TO TRIPOD SUPPORT POLES

PROPOSED 1No. ANTENNAS MOUNTED ON TRIPOD SUPPORT POLE FRAME. 3No. RRU's MOUNTED ON RAILS FIXED TO TRIPOD SUPPORT POLES

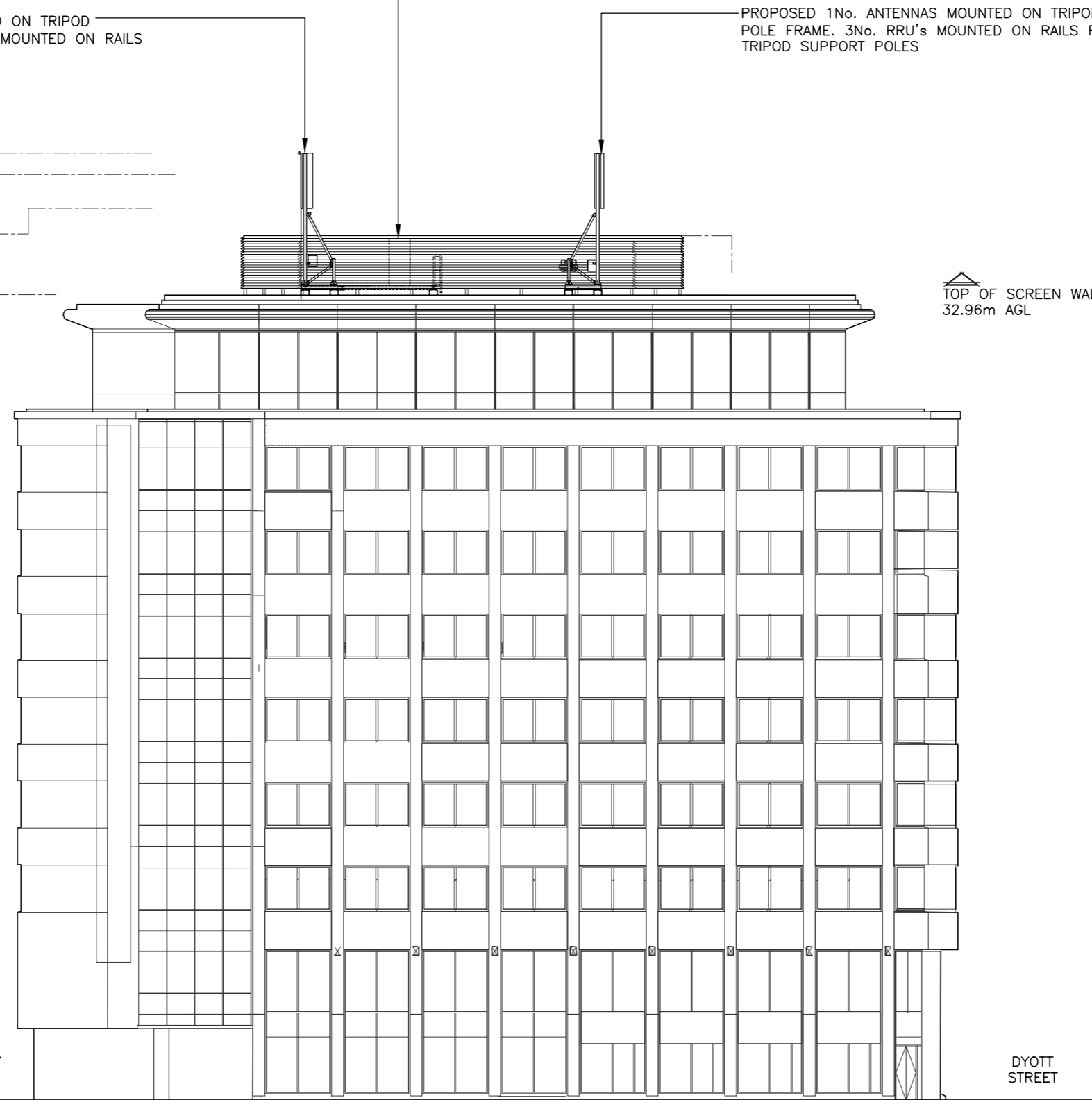
TOP OF ANTENNAS  
36.10m AGL

U/S OF ANTENNAS  
35.30m AGL

U/S OF ANTENNAS  
34.00m AGL

MAIN ROOF LEVEL  
30.70m AGL

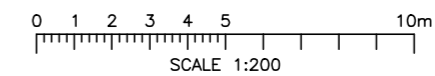
TOP OF SCREEN WALL  
32.96m AGL



G.L. BLOOMSBURY STREET

DYOTT STREET

PROPOSED NORTH WEST ELEVATION  
(1:200)



D	Site Redesign	BTM	SCF	28.11.24
C	Dishes revised	GJ	SCF	19.11.20
B	Layout revised	GJ	DW	14.10.20
A	Issued for Approval	GJ	DW	24.02.20
REV	MODIFICATION	BY	CH	DATE



CORNERSTONE - NON BEACON

Cell Name	Opt.
ALBION HOUSE	-

Cell ID No		
CTIL	VMO2	VF
242202	N/A	15321

Site Address / Contact Details		
ALBION HOUSE 55-59 NEW OXFORD STREET LONDON WC1A 1BS		

Drawing Title:  
PROPOSED NORTH WEST ELEVATION

Purpose of issue:	PLANNING	Dwg Rev:
-------------------	----------	----------

Drawing Number:	303	D
-----------------	-----	---

Surveyed By:	DW	Original Sheet Size:	A3	Pack Issue:
--------------	----	----------------------	----	-------------

Drawn:	PD	Date:	21.06.19	Checked:	DW	Date:	21.06.19	H
--------	----	-------	----------	----------	----	-------	----------	---

These drawings comply with VF Standard ICNIRP guidelines, under configuration VU7F/5UR  
Designed in accordance with Cornerstone documents: SDN0007 & SDN0009 v7.0

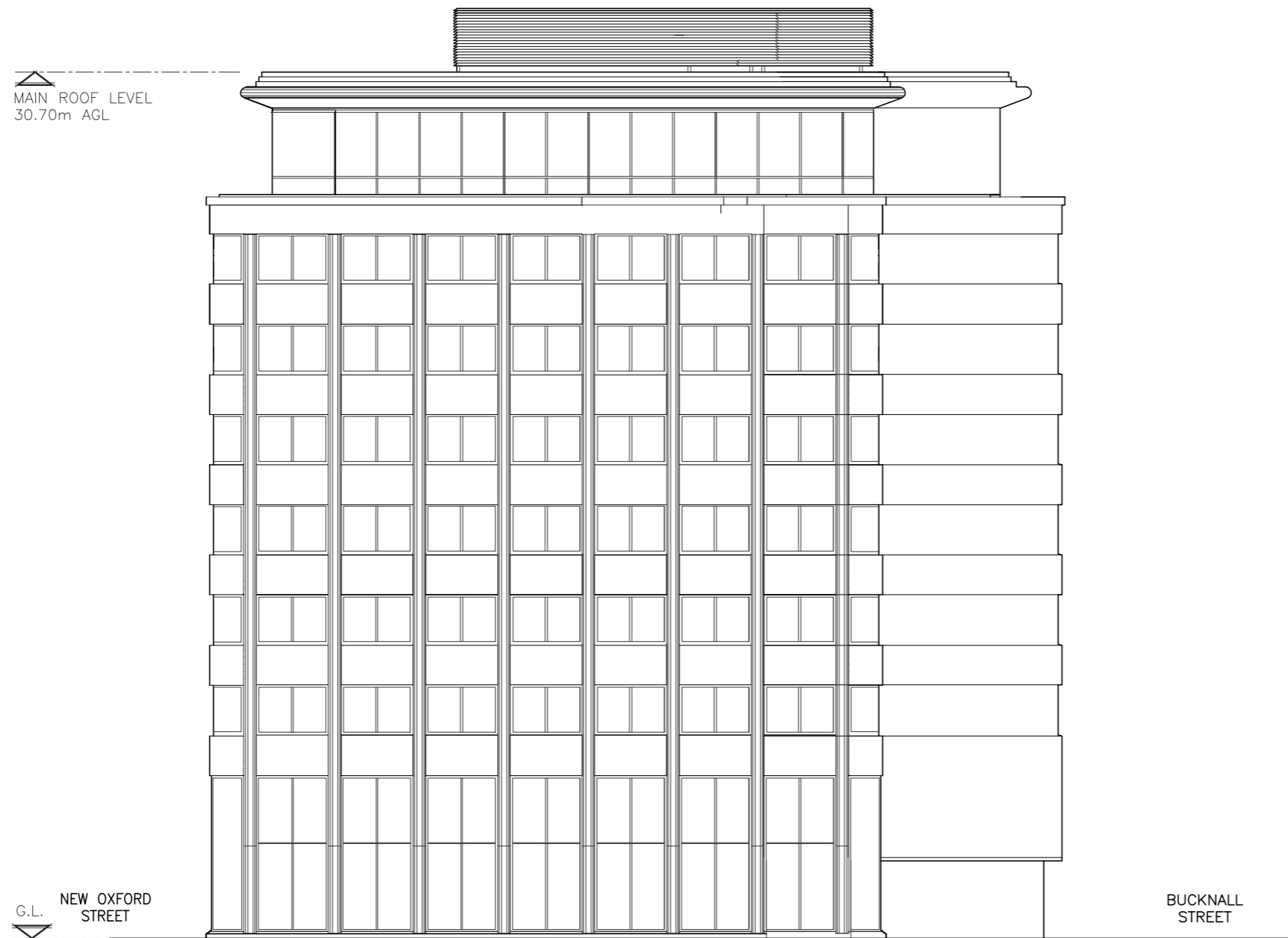
Notes  
SECTOR 2 REQUIRES STEP DOWN TO AVOID BUILDING TO SOUTH WEST



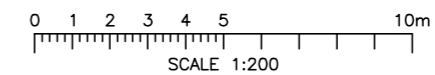
ALL DIMENSIONS ARE IN mm UNLESS NOTED OTHERWISE

N.G.R | E: 530052 | N: 181421

NOTES:



EXISTING SOUTH WEST ELEVATION  
(1:200)



REV	MODIFICATION	BY	CH	DATE
A	Issued for Approval	GJ	DW	24.02.20

**CLARKE telecom**  
 Unit E, Madison Place, Northampton Road,  
 Manchester, M40 5AG  
 Tel: 0161 785 4500  
 Fax: 0161 785 4501  
 Web: www.clarke-telecom.com

**vodafone**  
 CORNERSTONE - NON BEACON

Cell Name	Opt.
ALBION HOUSE	-

Cell ID No		
CTIL	VMO2	VF
242202	N/A	15321

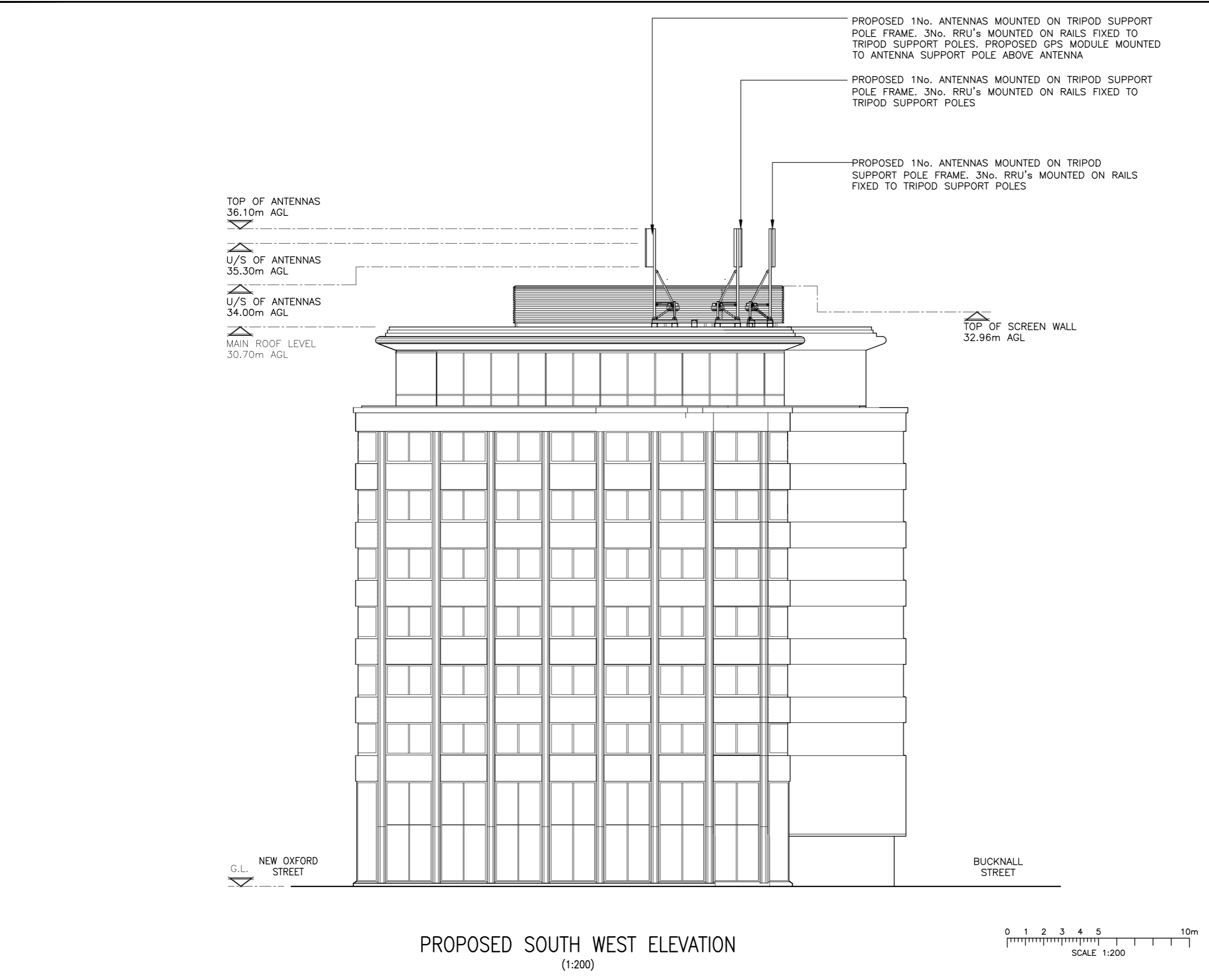
Site Address / Contact Details  
 ALBION HOUSE  
 55-59 NEW OXFORD STREET  
 LONDON  
 WC1A 1BS

Drawing Title:  
 EXISTING SOUTH WEST ELEVATION

Purpose of issue:	Dwg Rev:
PLANNING	A

Drawing Number:	Pack Issue:
304	H

Surveyed By:	Original Sheet Size:	Pack Issue:
DW	A3	H
Drawn:	Date:	Checked:
PD	21.06.19	DW
		Date:
		21.06.19



PROPOSED 1No. ANTENNAS MOUNTED ON TRIPOD SUPPORT POLE FRAME. 3No. RRU's MOUNTED ON RAILS FIXED TO TRIPOD SUPPORT POLES. PROPOSED GPS MODULE MOUNTED TO ANTENNA SUPPORT POLE ABOVE ANTENNA

PROPOSED 1No. ANTENNAS MOUNTED ON TRIPOD SUPPORT POLE FRAME. 3No. RRU's MOUNTED ON RAILS FIXED TO TRIPOD SUPPORT POLES

PROPOSED 1No. ANTENNAS MOUNTED ON TRIPOD SUPPORT POLE FRAME. 3No. RRU's MOUNTED ON RAILS FIXED TO TRIPOD SUPPORT POLES

TOP OF ANTENNAS  
36.10m AGL

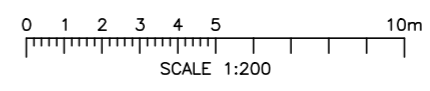
U/S OF ANTENNAS  
35.30m AGL

U/S OF ANTENNAS  
34.00m AGL

MAIN ROOF LEVEL  
30.70m AGL

TOP OF SCREEN WALL  
32.96m AGL

PROPOSED SOUTH WEST ELEVATION  
(1:200)



ALL DIMENSIONS ARE IN mm UNLESS NOTED OTHERWISE

N.G.R | E: 530052 | N: 181421

NOTES:

REV	MODIFICATION	BY	CH	DATE
D	Site Redesign	BTM	SGF	28.11.24
C	Dishes revised	DP	SGF	19.11.20
B	Layout revised	GJ	DW	14.10.20
A	Issued for Approval	GJ	DW	24.02.20

**CLARKE telecom**  
Unit E, Madison Place, Northampton Road,  
Manchester, M40 5AG  
Tel: 0161 785 4500  
Fax: 0161 785 4501  
Web: www.clarke-telecom.com

**vodafone**  
CORNERSTONE - NON BEACON

Cell Name	Opt.
ALBION HOUSE	-

Cell ID No		
CTIL	VMO2	VF
242202	N/A	15321

Site Address / Contact Details  
ALBION HOUSE  
55-59 NEW OXFORD STREET  
LONDON  
WC1A 1BS

Drawing Title: PROPOSED SOUTH WEST ELEVATION	
Purpose of issue: PLANNING	Dwg Rev: D
Drawing Number: 305	

Surveyed By: DW	Original Sheet Size: A3	Pack Issue:
Drawn: PD	Date: 21.06.19	Checked: DW
	Date: 21.06.19	H

These drawings comply with VF Standard ICNIRP guidelines, under configuration VU7F/5UR  
Designed in accordance with Cornerstone documents: SDN0007 & SDN0009 v7.0

**Notes**  
SECTOR 2 REQUIRES STEP DOWN TO AVOID BUILDING TO SOUTH WEST

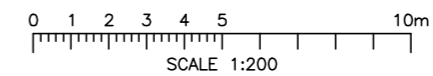
ALL DIMENSIONS ARE IN mm UNLESS NOTED OTHERWISE

N.G.R | E: 530052 | N: 181421

NOTES:



EXISTING SOUTH EAST ELEVATION  
(1:200)



A	Issued for Approval	GJ	DW	24.02.20
REV	MODIFICATION	BY	CH	DATE

**CLARKE**  
telecom

Unit E, Madison Place, Northampton Road,  
Manchester, M40 5AG  
Tel: 0161 785 4500  
Fax: 0161 785 4501  
Web: www.clarke-telecom.com

  
**vodafone**  
CORNERSTONE - NON BEACON

Cell Name	Opt.
ALBION HOUSE	-

Cell ID No		
CTIL	VMO2	VF
242202	N/A	15321

Site Address / Contact Details

ALBION HOUSE  
55-59 NEW OXFORD STREET  
LONDON  
WC1A 1BS

Drawing Title:  
EXISTING SOUTH EAST ELEVATION

Purpose of issue:	PLANNING	Dwg Rev:
Drawing Number:	306	A

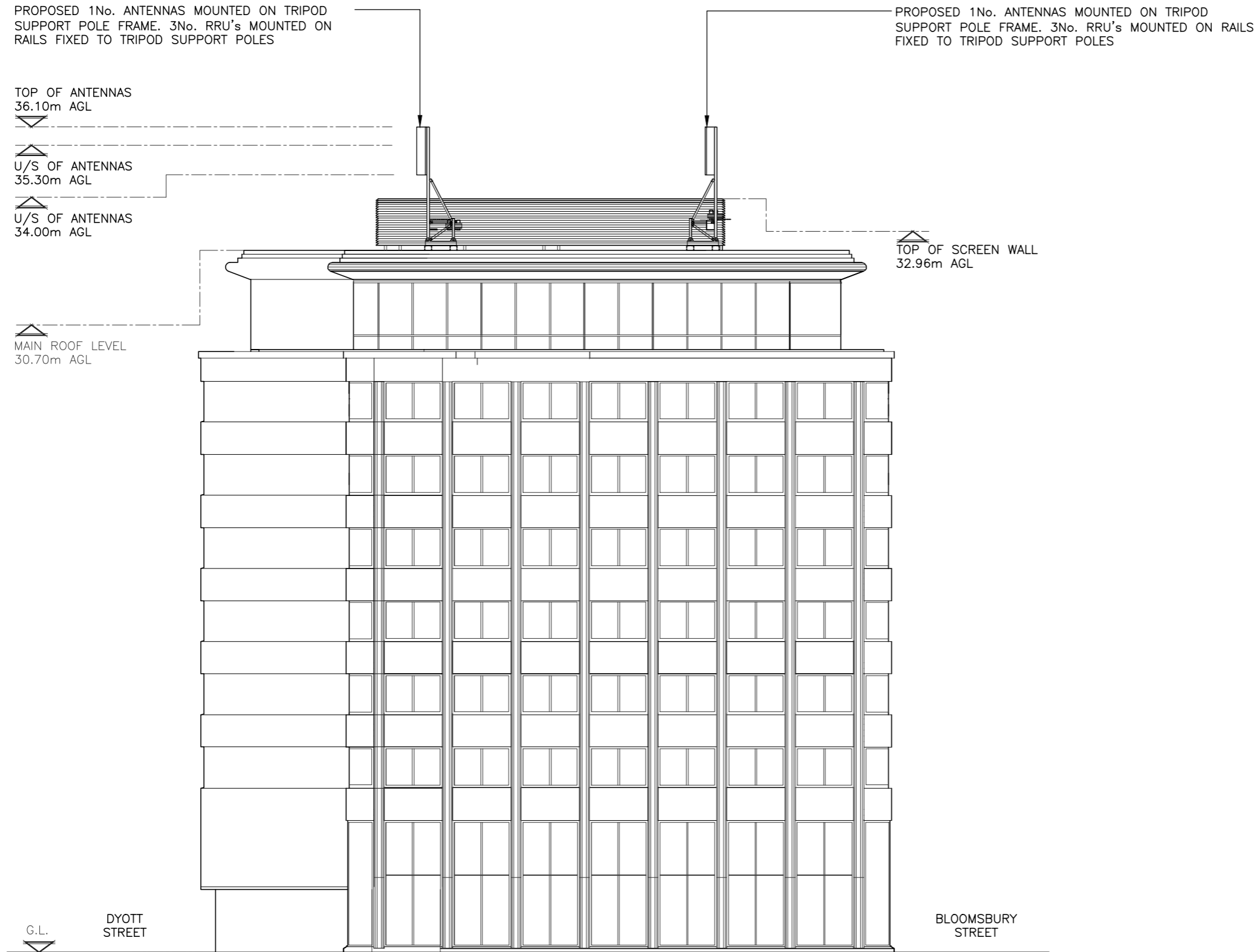
Surveyed By:	DW	Original Sheet Size:	A3	Pack Issue:
Drawn:	PD	Date:	21.06.19	Checked:
		Date:	21.06.19	H



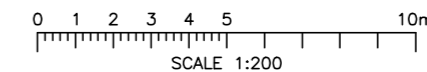
ALL DIMENSIONS ARE IN mm UNLESS NOTED OTHERWISE

N.G.R | E: 530052 | N: 181421

NOTES:



PROPOSED SOUTH EAST ELEVATION  
(1:200)



REV	MODIFICATION	BY	CH	DATE
D	Site Redesign	BTM	SGF	28.11.24
C	Dishes revised	DP	SGF	19.11.20
B	Layout revised	GJ	DW	14.10.20
A	Issued for Approval	GJ	DW	24.02.20



CORNERSTONE - NON BEACON

Cell Name	Opt.
ALBION HOUSE	-

Cell ID No		
CTIL	VMO2	VF
242202	N/A	15321

Site Address / Contact Details		
ALBION HOUSE 55-59 NEW OXFORD STREET LONDON WC1A 1BS		

Drawing Title:  
PROPOSED SOUTH EAST ELEVATION

Purpose of issue:	PLANNING	Dwg Rev:
Drawing Number:	307	D

Surveyed By:	DW	Original Sheet Size:	A3	Pack Issue:				
Drawn:	PD	Date:	21.06.19	Checked:	DW	Date:	21.06.19	H

These drawings comply with VF Standard ICNIRP guidelines, under configuration VU7F/5UR  
Designed in accordance with Cornerstone documents: SDN0007 & SDN0009 v7.0

**Notes**  
SECTOR 2 REQUIRES STEP DOWN TO AVOID BUILDING TO SOUTH WEST