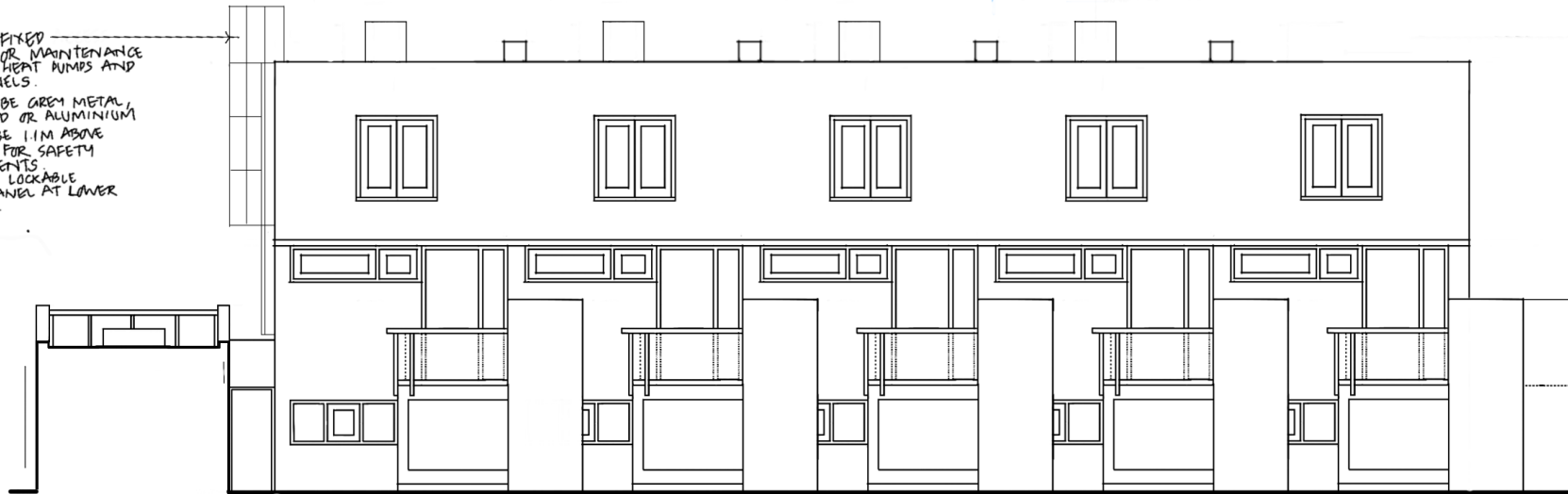


PROPOSED FIXED LADDER FOR MAINTENANCE ACCESS TO HEAT PUMPS AND SOLAR PANELS.
 LADDER TO BE GREY METAL GALVANISED OR ALUMINIUM HEIGHT TO BE 1.1M ABOVE PARAPET. FOR SAFETY REQUIRE MENTS TO INCLUDE LOCKABLE SECURITY PANEL AT LOWER ROOF LEVEL.



PROPOSED NORTH ELEVATION

0 1 2 3 4 5m
 SCALE 1:50 AT A1 PAPER SIZE
 1:100 AT A3

24 WINSCOMBE ST
 LONDON N19 5DG

24 JANUARY 2025

PROPOSED ACCESS
 LADDER TO ROOFS

REV A. 7 FEB 25, WRITTEN SCALE SHOWN



PROPOSED FIXED LADDER

PROPOSED SOUTH ELEVATION

24 JAN 2025. DRG NO 560.05, REV A