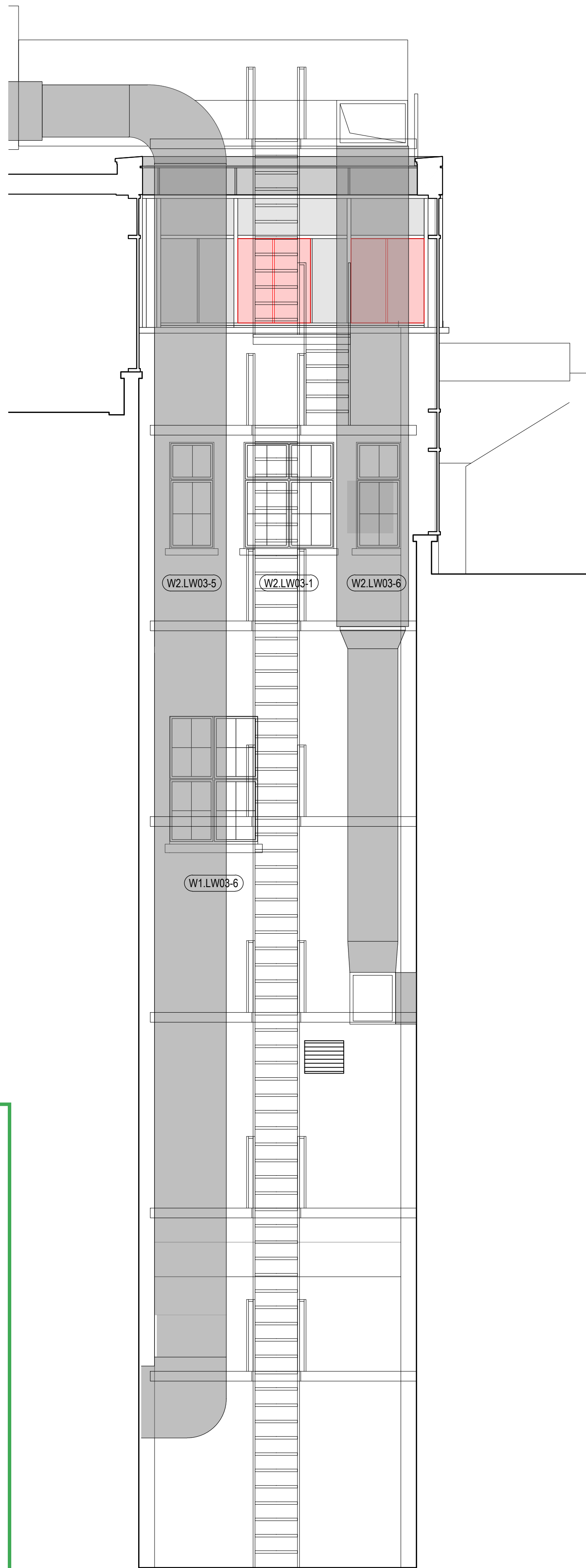


1  
1013  
DEMOLITION LW03 WEST ELEVATION  
1:50



2  
1013  
DEMOLITION LW03 SOUTH ELEVATION  
1:50

Notes:

Drawings are based on survey data and may not accurately represent what is physically present.

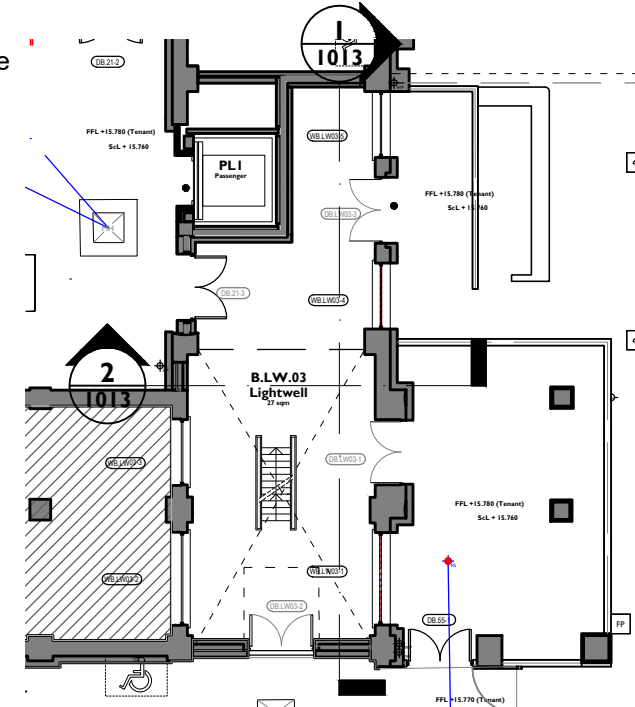
Do not scale from this drawing. All dimensions are to be verified on site before proceeding with the work.

All dimensions are in millimetres unless noted otherwise.

Purcell shall be notified in writing of any discrepancies.

Key Plan

not to scale



Demolitions and Alterations Key

- Section of wall / slab to be demolished
- Item to be demolished
- Structural slab to be removed
- Demolition overhead
- High level distribution opening in wall for services
- Floor trench in slab for cable distribution
- Possible routes for chasing of cables
- Section of timber panelling that may require removal for distribution of cable. (Routes ideally fed within void behind.)

Drawings to be read in conjunction with:

- Existing General Arrangement plans (00)00
- Internal Repairs and Builder's works drawing series (30)00
- NBS Specification
- Demolitions and Setting Out Plan series (15)00

General notes:

- GA demolition plans indicate fabric remod. For all builders work holes in slab and at high level refer to 1500 series.
- All newly installed ceilings, lighting fittings, doors, entranceways to be carefully removed and checked.

C03	06.12.24	OB	JE	S4+ COORDINATION
C02	14.06.24	TF	NS	STAGE 4 ISSUE
C01	08.03.24	ML	OB	Stage 3 Issue
REV	DATE	BY	CHK	DESCRIPTION

CLIENT

Il Bottaccio

PROJECT

Camden Town Hall Tenant Fitout

JOB NUMBER

242931

TITLE

DEMOLITION LW03 ELEVATIONS

SIZE  
A1L

SCALE  
1:500

REV SUITABILITY/REASON FOR ISSUE

C03 A4 - Technical Design Approved

DRAWING NUMBER

242931-PUR-01-XX-DR-A-1013

PURCELL® IS THE REGISTERED TRADE NAME FOR PURCELL ARCHITECTURE LTD AND ALL SUBSIDIARY COMPANIES AND IS REGISTERED IN THE UNITED KINGDOM, EUROPEAN UNION, HONG KONG, CHINA AND AUSTRALIA. © PURCELL 2024. www.purcell.com

