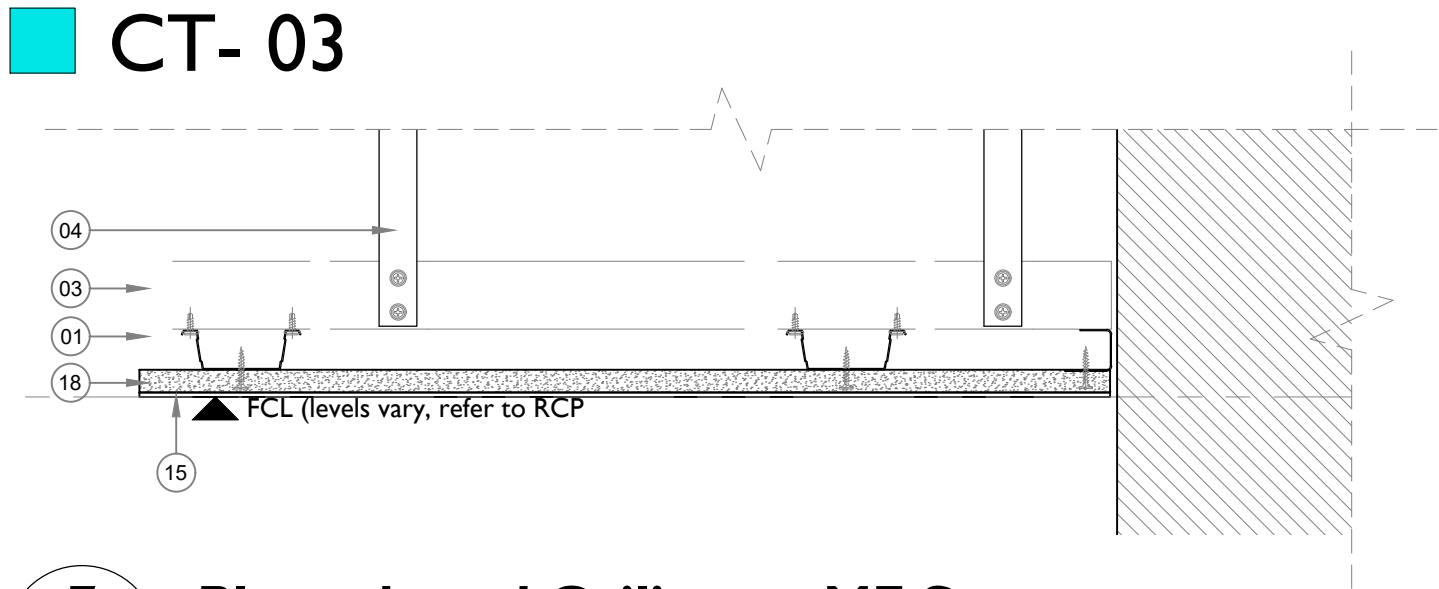


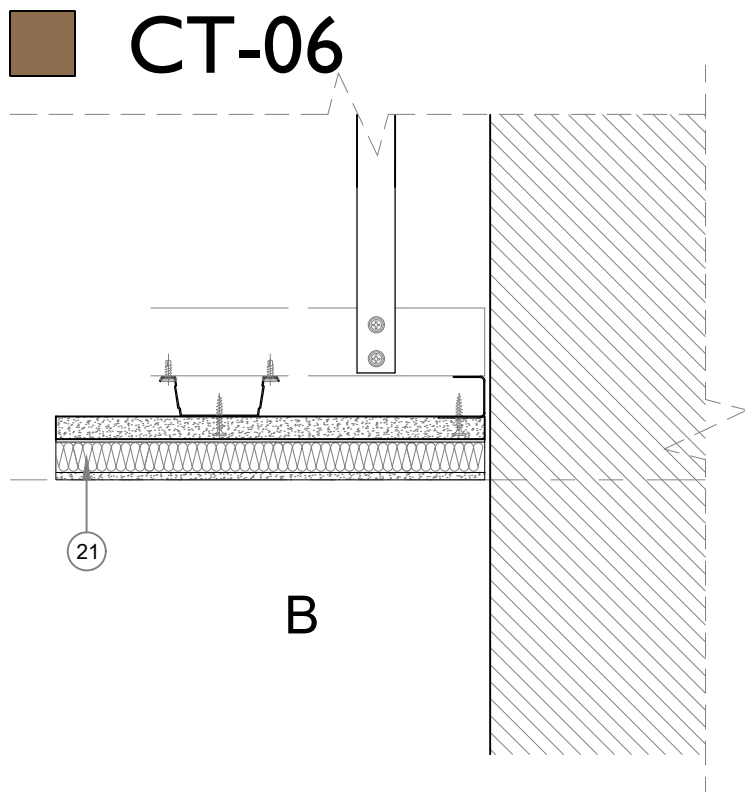
■ CT- 01

Repair Existing Plaster Ceiling with Feature Mouldings



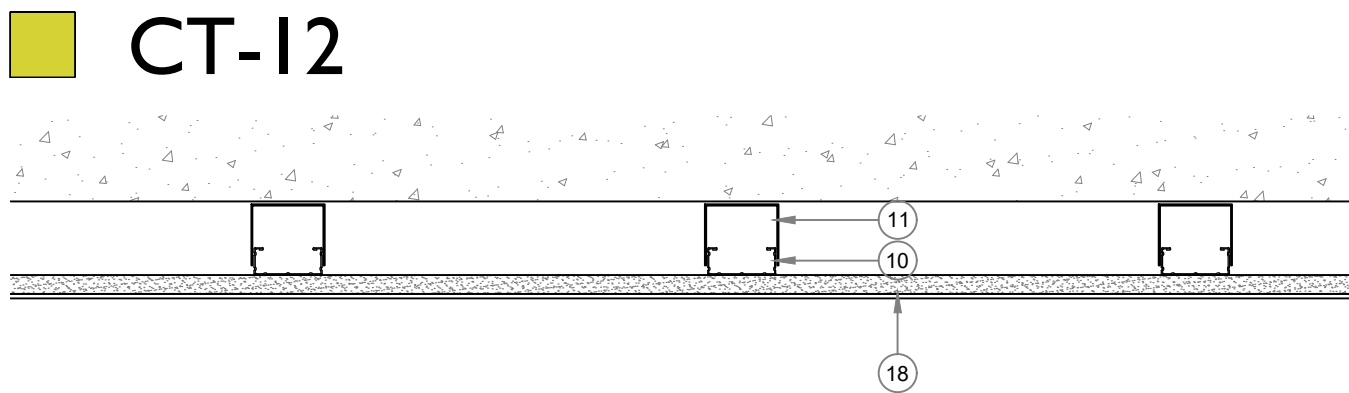
7
6314

Plasterboard Ceiling on MF System
1:5 @ A I



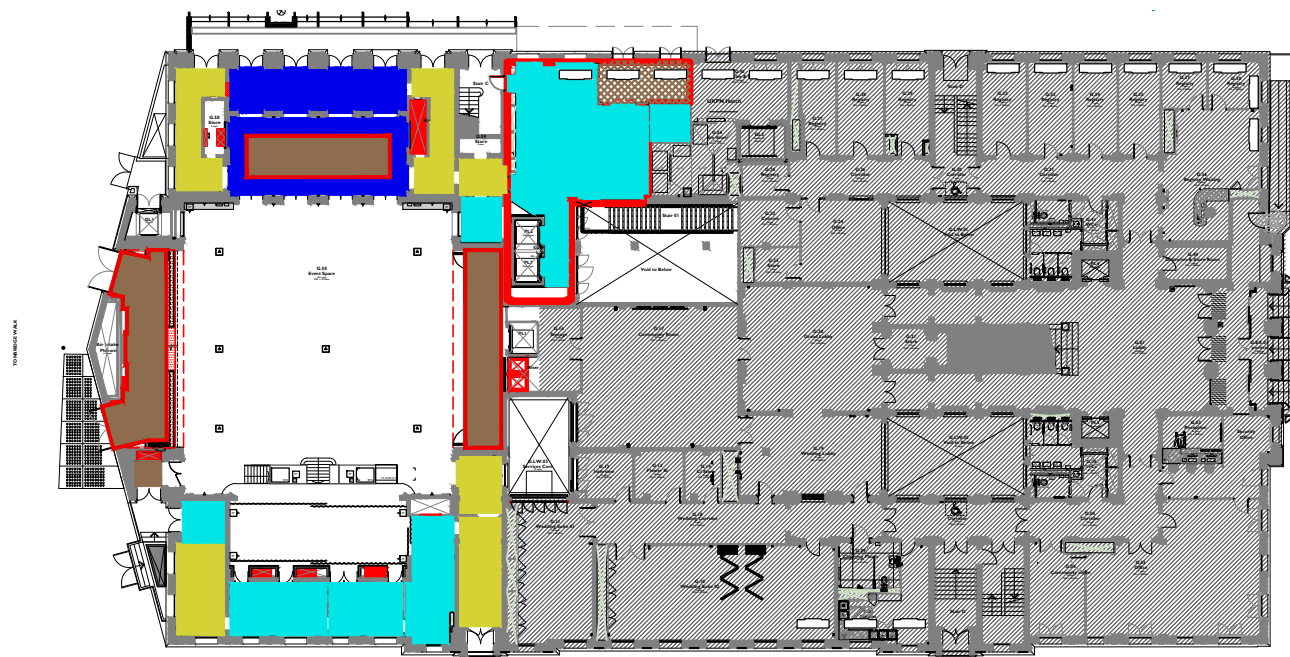
6B
6314

Smooth Acoustic Ceiling on MF System
1:5 @ A I



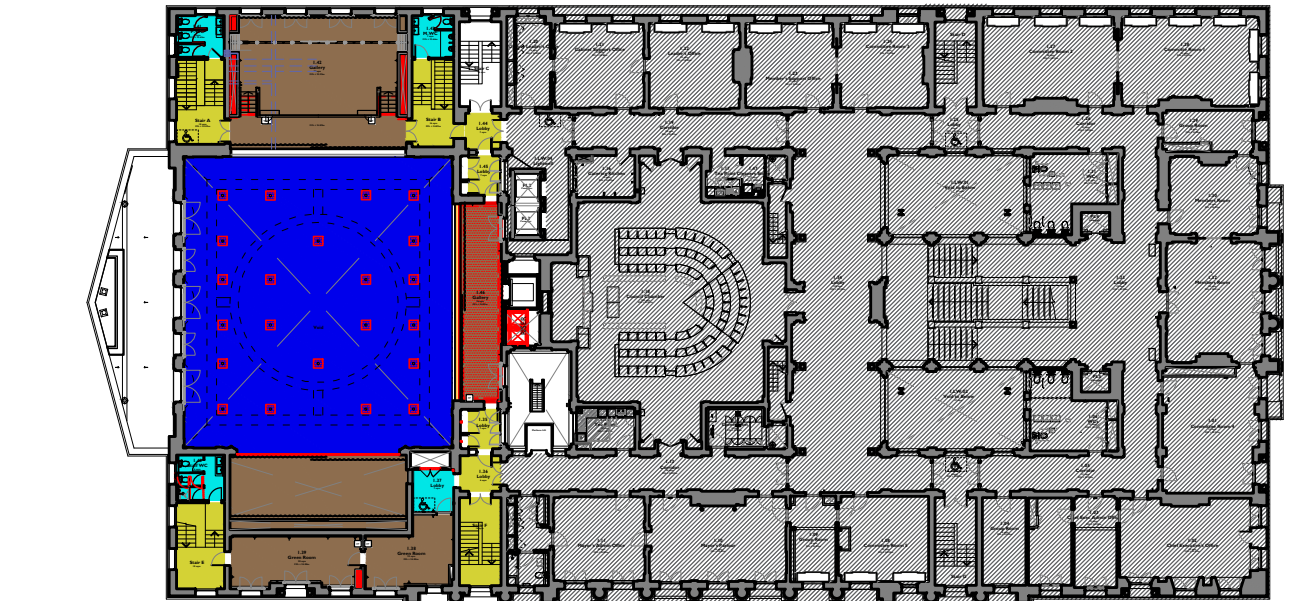
4
6316

Gypliner Ceiling Detail
1:5 @ A I



I
6302

Ground Floor - Key Plan
1:500 @ A I



2
6302

First Floor - Key Plan
1:500 @ A I

Notes:

Drawings are based on survey data and may not accurately represent what is physically present.

Do not scale from this drawing. All dimensions are to be verified on site before proceeding with the work.

All dimensions are in millimetres unless noted otherwise.

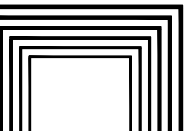
Purcell shall be notified in writing of any discrepancies.

Key Plan
not to scale

- Metal Frame Ceiling**
- 1 - MF5 Ceiling Sections
 - 2 - MF6 Perimeter Channel
 - 3 - MF7 Primary support channel
 - 4 - MF8 Strap hanger
 - 5 - MF12 Soffit Cleat
 - 6 - GA4 L trim
 - 7 - Connect T-24 Main runner
 - 8 - Connect T-24 Cross tee
 - 9 - Connect Adjustable hanger
 - 10 - GL1 Lining Channel
 - 11 - GL2 or GL9 Brackets
 - 12 - Threaded bar with anchor fixings
 - 13 - Unistrut
 - 14 - Supporting ribs
- Finishes**
- 15 - 3mm Skim
 - 16 - 19mm Oscar FCX as M20:222
 - 17 - 6mm Mirror bonded to substrate with CT1
 - 18 - 15mm Wallboard
 - 19 - Ecophon Tile as K40:226 with K40:116 Ecophon hangers
 - 20 - 18mm Ply as G20:15
 - 21 - Oscar Elite as M20:221
 - 22 - Perforated acoustic panel to K13:175
 - 23 - Lighting by lighting designer
 - 24 - Hardwood joinery to P20:122
 - 25 - Moulding to DRS specification
 - 26 - Bannisol ceiling to H90 spec
 - 27 - Hygienic ceiling panel K10:227
- Trims to Z11 spec**
- 28 - 25x25mmx3mm brass L trim, corners mitred
 - 29 - 30x30x3mm brass L trim, corners mitred
 - 30 - 50x80x3mm brass L trim, corners bent to 100mm
 - 31 - 100x25x3mm brass L trim external radius. Braze and polish to joint
 - 32 - Qic Trim E50
 - 33 - Qic Trim E12
 - 34 - Qic Trim E15
 - 35 - Qic Trim E19
 - 36 - Qic Trim X55 curved
 - 37 - Qic Trim US02 curved
 - 38 - Qic Trim CH03 curved
 - 39 - Qic Trim US04 curved
 - 40 - Qic Trim E25 curved
 - 41 - Hinge mechanism
- GRG / Fibrous Plaster**
- A - Quarter round radius 100
 - B - Cove radius 100
 - C - Arc 90 degrees internal radius 175 external radius 210
 - D - Arc 60 degrees, internal radius 225, external radius 250
 - E - Arc 90 degrees, internal radius 700, external radius 735
 - F - 300x50 lighting trough
 - G - Double curved cove, internal radius 175mm at 90 degrees and internal radius 850mm at 180 degrees
 - H - Flat topped circular coffer at 100mm depth, 100mm radius at edges, at 778mm total radius.
 - I - Fluted column encasement
 - G - Moulding taken from suppliers existing stock
- System Specifications**
- | | |
|--------------------------------|---------|
| MF ceiling with plasterboard | K10:226 |
| Hygienic ceiling panel ceiling | K10:227 |

HATCH KEY				
	GRG / Fibrous Plaster			
	Plasterboard			
	Acoustic Plaster			

P01	14.02.2025	SS	DZ	For Approval
REV	DATE	BY	CHK	DESCRIPTION

CLIENT		
II Bottaccio		
PROJECT		
Camden Town Hall Tenant Fitout		
JOB NUMBER		
242931		

TITLE	
Ground and First Floor Ceiling Details	

SIZE	SCALE	LAST REVISED	DRAWN	CHECKED
A1L	1:5			
REV	SUITABILITY/REASON FOR ISSUE			
P01	S4 - Stage Approval			
DRAWING NUMBER				
242931-PUR-01-XX-DR-A-6302				