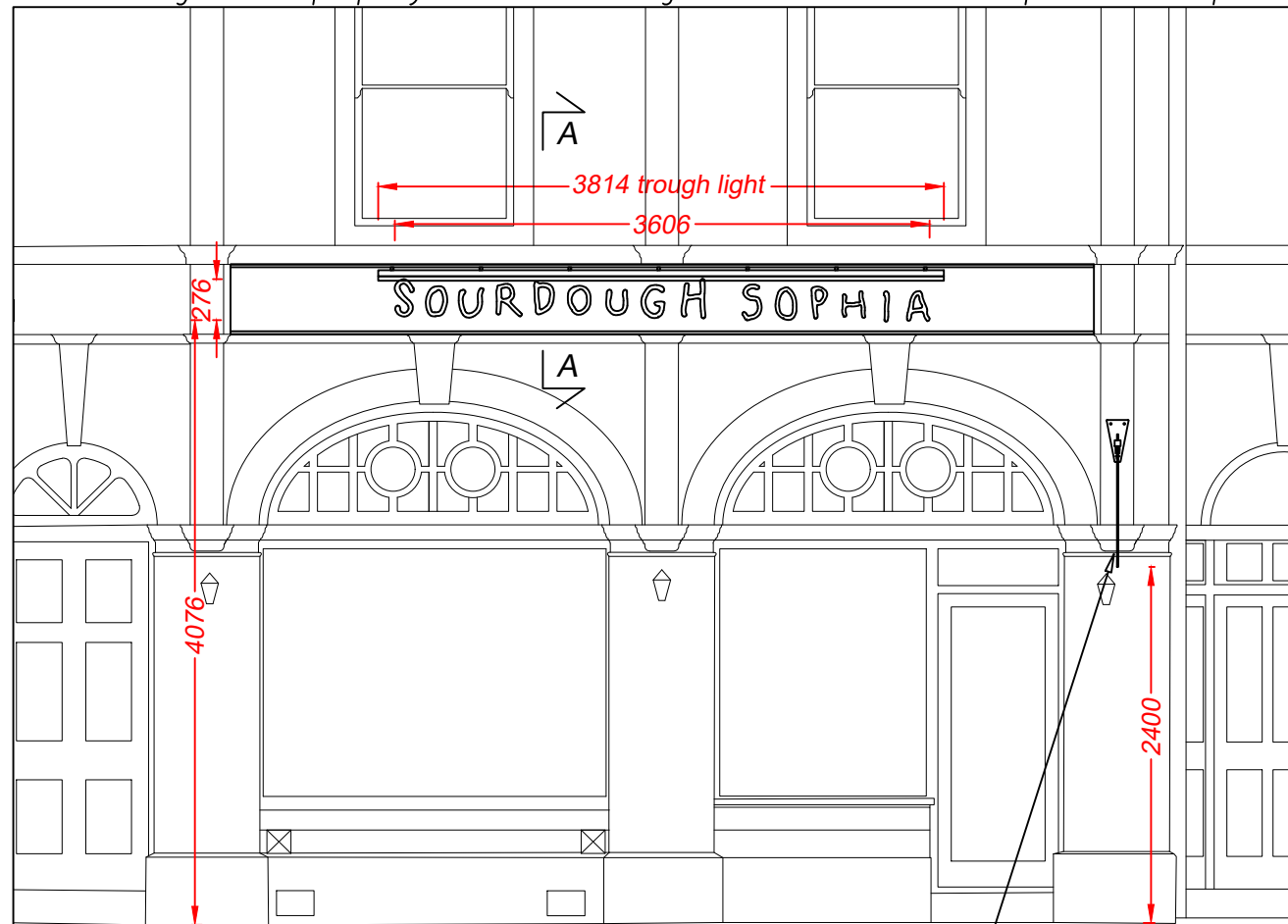
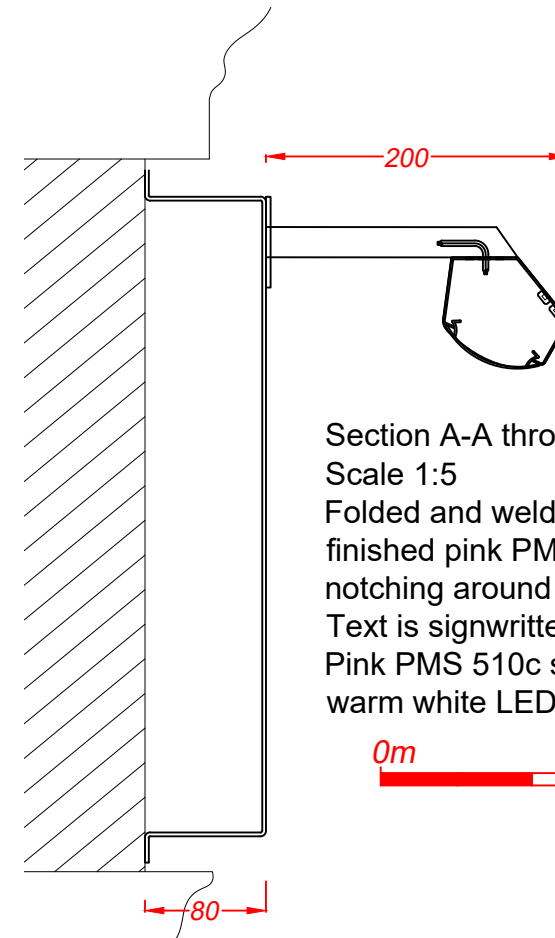


PROPOSED



Front Elevation
Scale 1:50

projected sign position



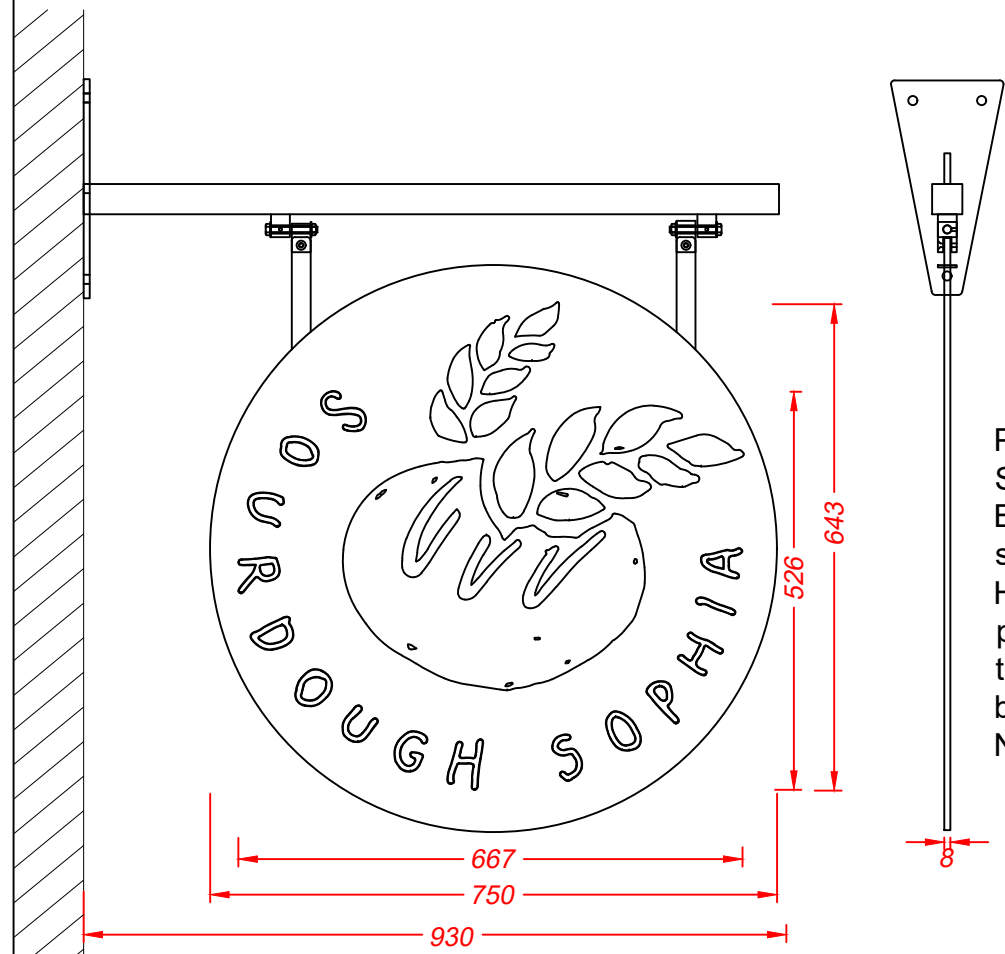
Section A-A through the text

Scale 1:5

Folded and welded 2.5mm aluminium fascia panel is finished pink PMS 510c and is fixed to the brick fascia with notching around the protruding column.

Text is signwritten onto the panel face in black.

Pink PMS 510c steel troughs are fitted with low energy warm white LEDs for external illumination.



Projected sign - 1 off

Scale 1:10

Black steel projecting arm with welded swing blocks for a hanging sign.

Hanging sign is an 8mm aluminium panel finished pink PMS 510c with the text signwritten onto the panel faces in black with a black and darker pink logo. No illumination.



C	Shorter trough light	17/02/25
B	Fascia panel added	07/02/25
A	Projecting sign moved	29/01/25

	Technical Signs Floor 1 - Unit 3 Hille Business Centre 132 St Albans Road Watford, Herts, WD24 4AE Tel: 01923 811999 Fax: 01923 811998 E-mail: info@technicalsigns.co.uk	Client Sourdough Sophia Address/Job details 3 Highgate W Hill Highgate N6 6JS Proposed signage
	Job No -	Date 14/01/25
	Drawn by DN	Rev C
	Scale As specified (A3)	Drawing No 597014-2