

C2000 PLATFORM LIFT BROCHURE

2023-2024



D.K Lift Services Ltd
Unit 2, Victoria Industrial Park
Dartford, DA1 5AJ

Telephone: 0203 633 8129
Email: info@dkliftservices.co.uk

www.dkiftservices.co.uk



STANDARD SPECIFICATIONS

PRINCIPAL DATA

Type:	DKL C2000 Platform Lift
Drive system:	Dual Chain Driven
Lift usage:	Impaired Mobility Use Only
Capacity:	500kg 6 Person
Speed:	0.15 m/s
Travel:	up to 15m
No of stops:	up to 6 stops
Configuration:	Single, through or adjacent

SPACE REQUIREMENT / FLOOR APERTURE

Width:	1280mm
Depth:	1590mm
Pit depth:	60mm
Headroom:	2200mm minimum

DOORS

Type:	Fully Glazed
No of doors:	2
Fire rating:	Fire rated doors available
Clear opening:	900mm x 2000mm
Door frame:	Integral to shaft enclosure
Finishes:	Door and frames white powder
Furniture:	coated (RAL 9010)
Door operation:	Manual opening with self closer Electrically & mechanically interlocked

It's a legal requirement for all public buildings to offer equal access for persons with impaired mobility, however, it's also important to find the right solution. We understand the importance of both aesthetics and reliability. Working with various manufacturers throughout the world, to develop and produce a product that suits both of them requirements.

The C2000 is a revolutionary platform lift. Providing a sleek access solution for disabled access requirements. Offering comfortable, secure travel up to 6 floors, this lift would not look out of place in either a private residence, or public access environment.

With its own self supporting enclosure, preventing the need for its own lift shaft, its popularity is increasing in buildings where conventional passenger lifts are impractical.

Lift is constructed, tested and approved to comply with European Machinery Directives 2006/42/EC and Swedish standard SS2097 -7 full stop. Fully compliant with Part M Building Regulations and designed to meet the requirements of BS 6440, ISO 938 6-1 and EN 81-41.



STANDARD SPECIFICATIONS

LIFTING PLATFORM

Width:	1120mm
Depth:	1480mm
Height:	1100 mm console to one long side
Handrail:	Stainless steel to one side on console
Flooring:	Vinyl light grey
Safety edge:	Three sides of platform floor and to top edge of console
Lighting:	Controls illuminated (battery backup)

LIFT ENCLOSURE

Construction:	Cladding on 4 sides in white vinyl coated double skinned steel panels, filled with EPS polystyrene Ceiling on top of shaft enclosure with LED lights
Fire rating:	None

ELECTRICAL DETAILS & POWER REQUIREMENT

Supply:	230-240V 1 Phase 50Hz 10amp
Supply location:	Rotary Lockable isolator in view of the electrical cabinet, located at the upper landing level installed by others
Emergency Lowering:	Controlled from platform
Initiation:	Soft start

Our C2000 platform lift offers a vast range of benefits over both conventional passenger lifts and other platform lifts.

It is environmentally friendly:

- Oil-free drive system
- 75% less energy consumption over most platform lifts
- 0.55KW power consumption instead of the EU standard of 2.2kW common in the industry
- Automatic On/Off LED shaft lighting
- 10a Fuse supply, instead of the traditional 16a - substantially reducing operating costs

It's even safer:

- All manufactured lifts in the UK require specific stringent inspections and operating testing
- Using a chain driven system, instead on the traditional "nut and screw" system found with most platform lifts, not only drastically reduces operating noise levels, but also allows us to install additional safety features to assure the product in the safest it can be
- A full length chain system eliminates any possibility of the chain derailing



STANDARD SPECIFICATIONS

CONTROL EQUIPMENT

Control system:	Microprocessor based with service memory facility
Operation:	Platform - constant pressure button / Landings - one touch
Face plate:	Natural anodised aluminium with coloured text
Push buttons:	Flush & tactile
Platform console:	Destination, alarm and emergency stop buttons,
Landings:	Call button with green halo indication
Alarm:	External audible sounder
Pit prop:	Manual with electrical interlock
Audible indication:	Arrival sounder
Fire alarm interface:	Volt free contacts
Call and send facility:	Initiated from both car and landing push stations
Communication:	Telephone providing two way voice communications (required EN81-41)

WARRANTY & STANDARDS

12 months comprehensive maintenance and breakdown cover including 2 service visits.

The unit is type tested and CE marked in accordance with the Revised European Machinery Directive (2006/42/EC).

Our flexible design options make it easy and inexpensive to customise the lift to suit your requirements.

- Any combination of glass and solid walls
- Doors can be fitted up to three sides, right or left hinged on any side
- Key switch operation optional (preferable in public settings where children are present)
- Emergency communication
- Braille buttons
- Audible indication on landing level arrival (voice and sound)
- Remote landing wall stations to facilitate easy operation
- Platform overload indicator
- One touch calling on all landings

DOOR OPTIONS

- Swing door 800, 900 and 1000mm available
- Full or half height (door height on top floor 2000 mm or 1300 mm)
- Manual doors with door closer, or automatic door openers (option)
- Door design comes in eight choices
- Fire-rated doors available
- Stainless steel or wooden (Teak or Oak) door handles (option)



STANDARD SPECIFICATIONS

Lifting height	Maximum 13.0m
Speed:	0.15m/s
Landings:	2 to 6
Rated load:	400 kg / 500 kg (depending on model)
Headroom:	2230 mm above top-finished floor (minimum).
Supply voltage:	Single-phase 230-240V/10A.
Drive system:	Guided chain system with lifecycle greased gear and 0.55 kW synchronous motor, including safety gear with integrated self-supervised over speed governor.
Lift shaft:	Includes self-supporting enclosure with no conventional elevator shaft required. Shaft height on top floor is 2200 mm or 1300 mm with half-door.
Doors:	Landing fire rated manual swing door as standard, alternative options available.
Pit:	60 mm depth, alternatively a ramp
Platform:	L-shaped platform with safety edge. *Alternative size available on request
Control system:	PLC System with manual override operation system including in emergency situations.
Alarm:	Emergency buzzer with continuous-charged battery in the control unit at the upper level.

FULLY GLAZED / FULLY PANORAMIC / FULLY BESPOKE



C2000 shaft structure & panels can be powder coated to any colour with an RAL number. Have a colour in mind?

TWO WAY COMMUNICATION

Two way telecommunications system installed as standard under EN81-41. Telecommunication feed required to panel required to be completed by others.



LIFT TECHNICAL SPECIFICATIONS

Capacity	Model	Car Size mm	Internal Shaft mm	Structural Opening mm
400kg 500kg	C1	1020 x 1480	1150 x 1560	1180 x 1590
400kg 500kg	C2+Standard	1120 x 1480	1250 x 1560	1280 x 1590
400kg 500kg	C3	1220 x 1480	1350 x 1560	1380 x 1590
400kg 500kg	H4	1020 x 870	1150 x 950	1180 x 980
400kg 500kg	H5	1120 x 870	1250 x 950	1280 x 980
400kg 500kg	H6	1220 x 870	1350 x 950	1380 x 980
400kg 500kg	XL7	1020 x 1680	1150 x 1760	1180 x 1790
400kg 500kg	XL8	1120 x 1680	1250 x 1760	1280 x 1790
400kg 500kg	XL9	1220 x 1680	1350 x 1760	1380 x 1790
400kg 500kg	SP10	1120 x 1170	1250 x 1250	1280 x 1280

LIGHTING

- LED Shaft lighting located in shaft ceiling (except with half height door)
- Platform equipped with battery-backed LED lighting

FLOORING

Standard Tarkett Granit 18383, 18780, 18T72 (alternative colours as optional extra)

OPTIONS

Factory Paintwork, glazed shaft, doors, autodialer, lockable key operation, automatic locking system.

COLOURS

- Standard colour is white RAL9010
- Alternative RAL colours available (option)
- Shaft finished in powder coated standard-finish white (RAL 9010) and can be delivered as unfinished if local painting is required, with other RAL colours on request as an option
- Shaft glazed on all four sides (option)



Standard

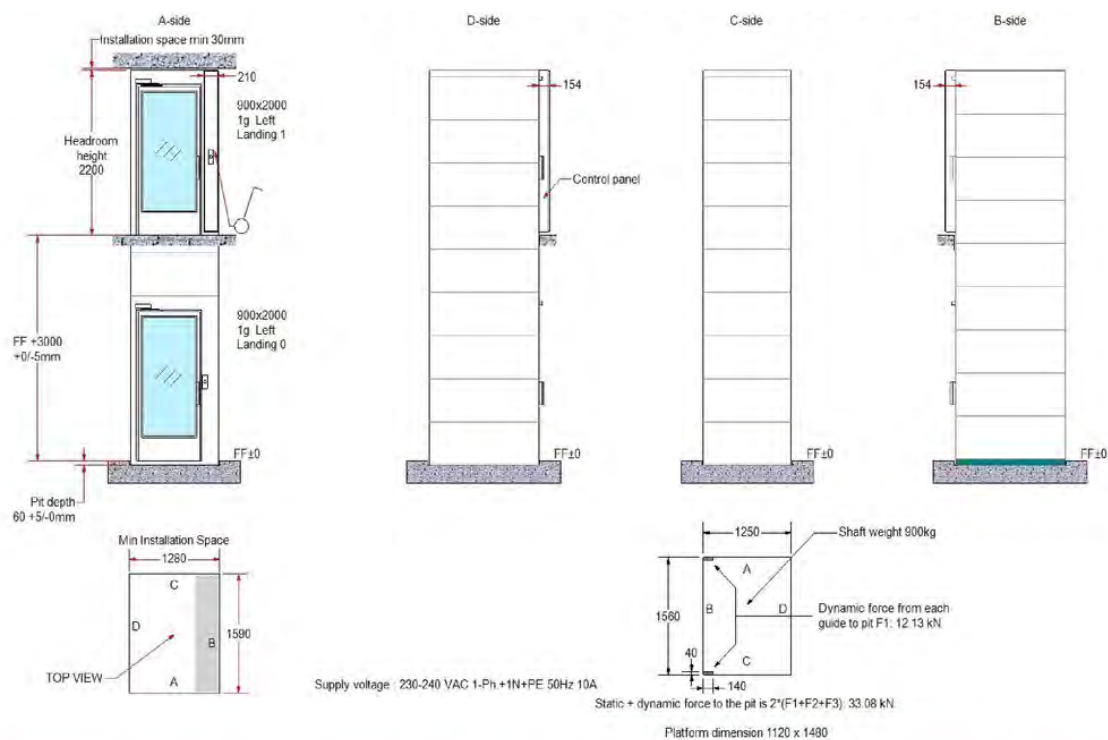


LIFT CONTROL PANEL & LANDING CALL STATIONS

- Constant pressure on platform, one touch on landings
- Push buttons or key switch
- Large-size buttons (50 mm x 50 mm)



GENERIC C2000 PLATFORM LIFT DRAWING



NOTE – THIS DRAWING IS FOR GUIDANCE ONLY AND MUST NOT BE USED AS A PROPER WORKING DRAWING. FOR ENQUIRIES ABOUT THE LIFT PLEASE CONTACT: D.K LIFT SERVICES LTD - 0203 633 8129.

PLEASE NOTE THAT THE APERTURE SIZES VARY, THESE ARE FOR REFERENCE ONLY AND NOT CONSTRUCTION ISSUE, SITE SPECIFIC DRAWINGS AVAILABLE UPON RECIPT OF ORDER.



D.K Lift Services Ltd
Unit 2, Victoria Industrial Park
Dartford, DA1 5AJ

Telephone: 0203 633 8129
Email: info@dkliftservices.co.uk

www.dkliftservices.co.uk