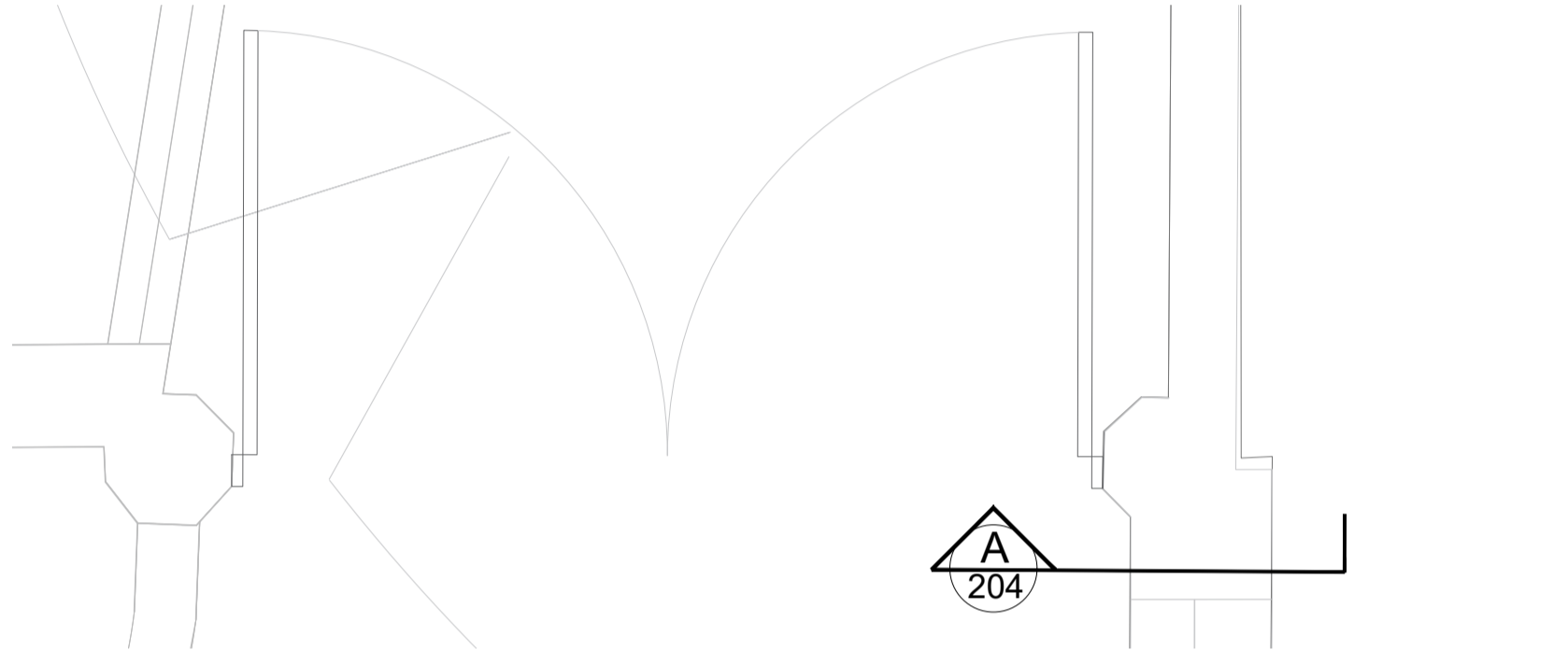
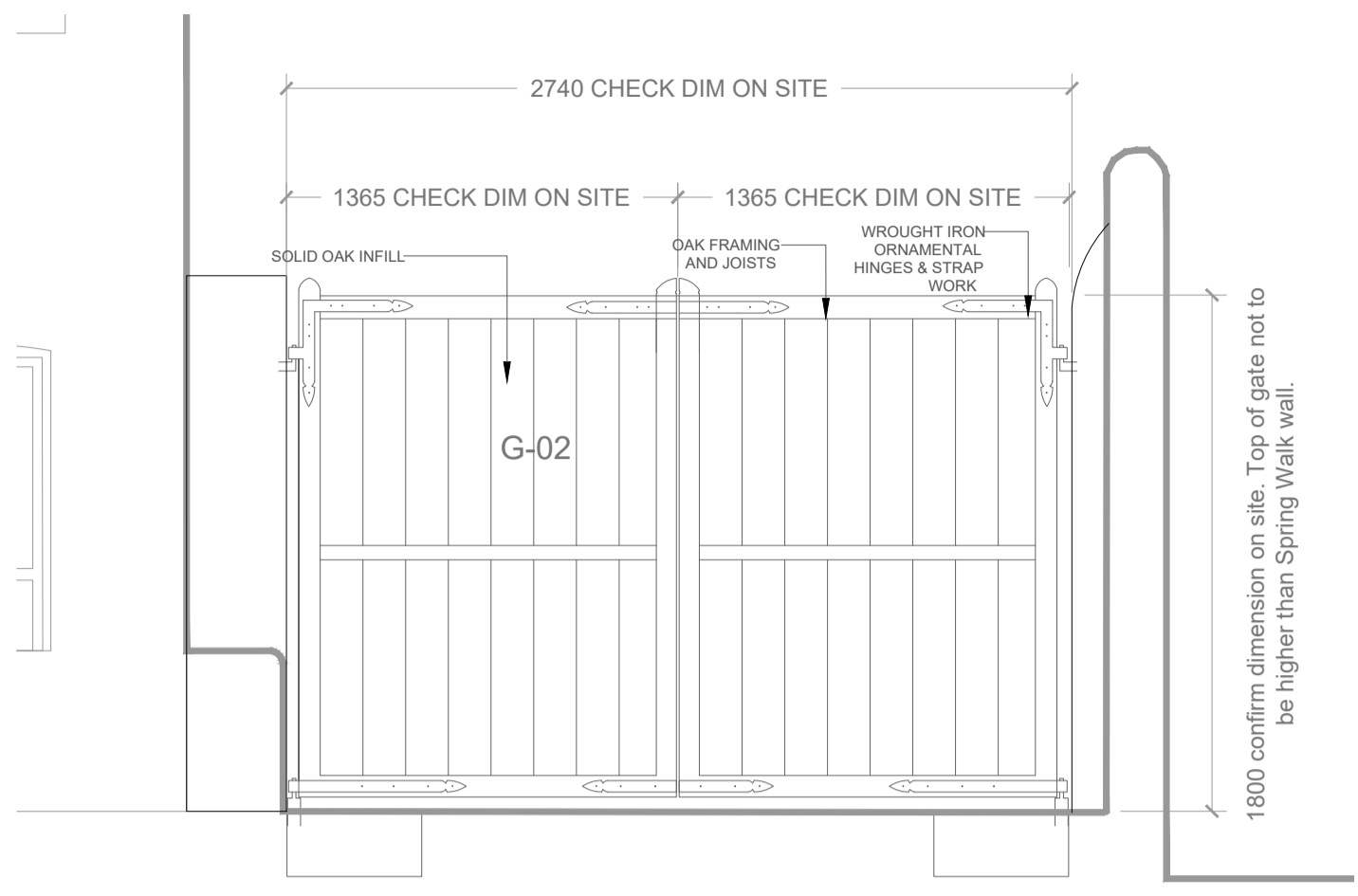


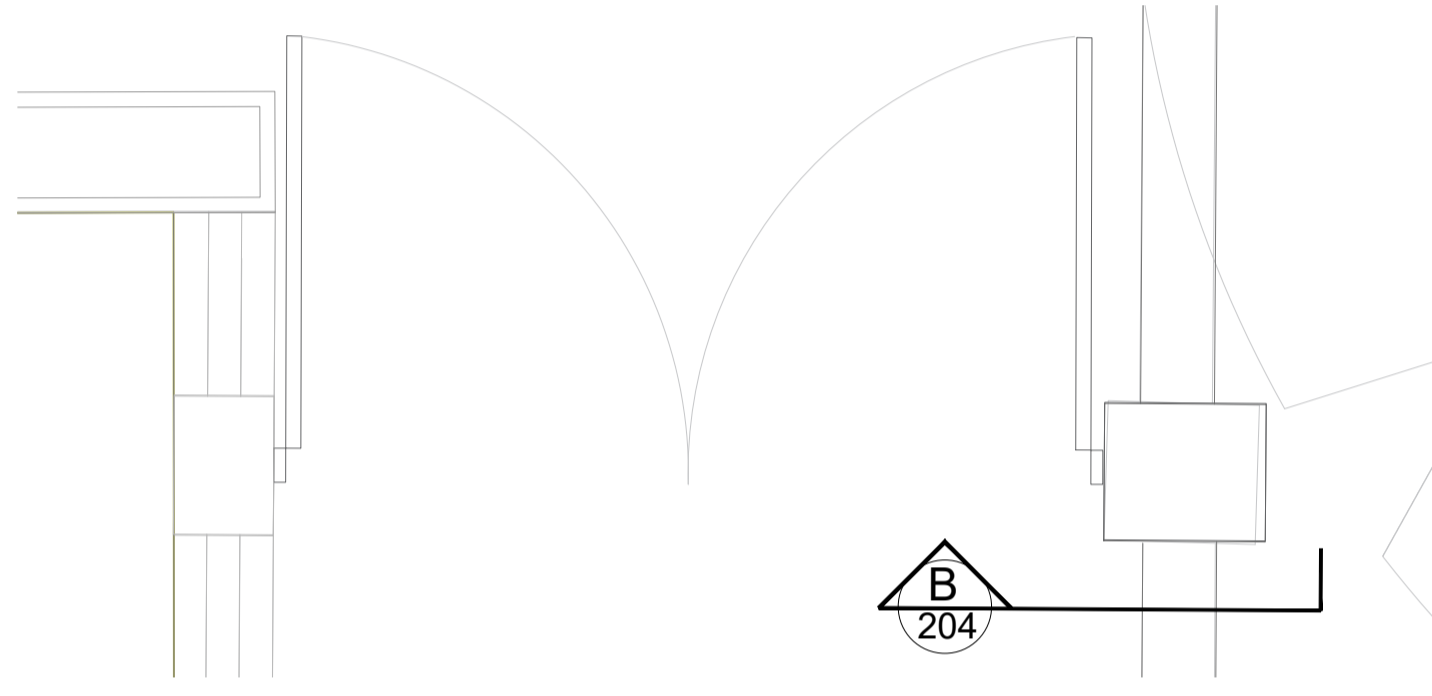
A-046-204 ELEVATION A: NO. 82 DRIVEWAY GATE 01
01 1:25@A1



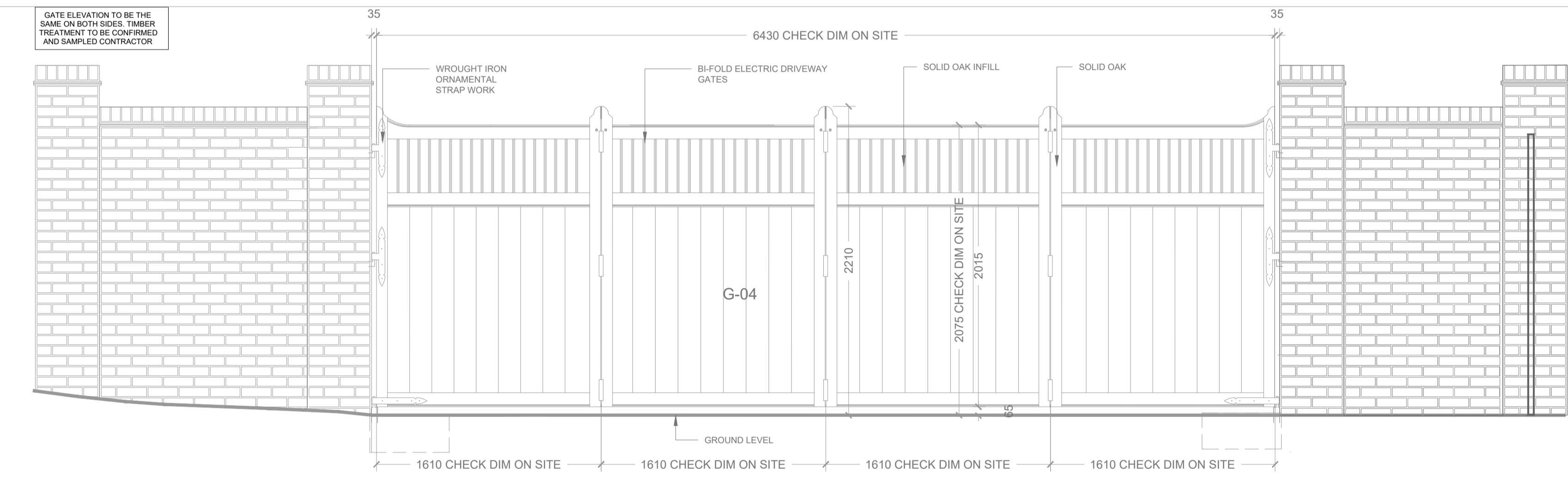
A-046-204 PLAN: NO. 82 DRIVEWAY GATE 01
02 1:25@A1



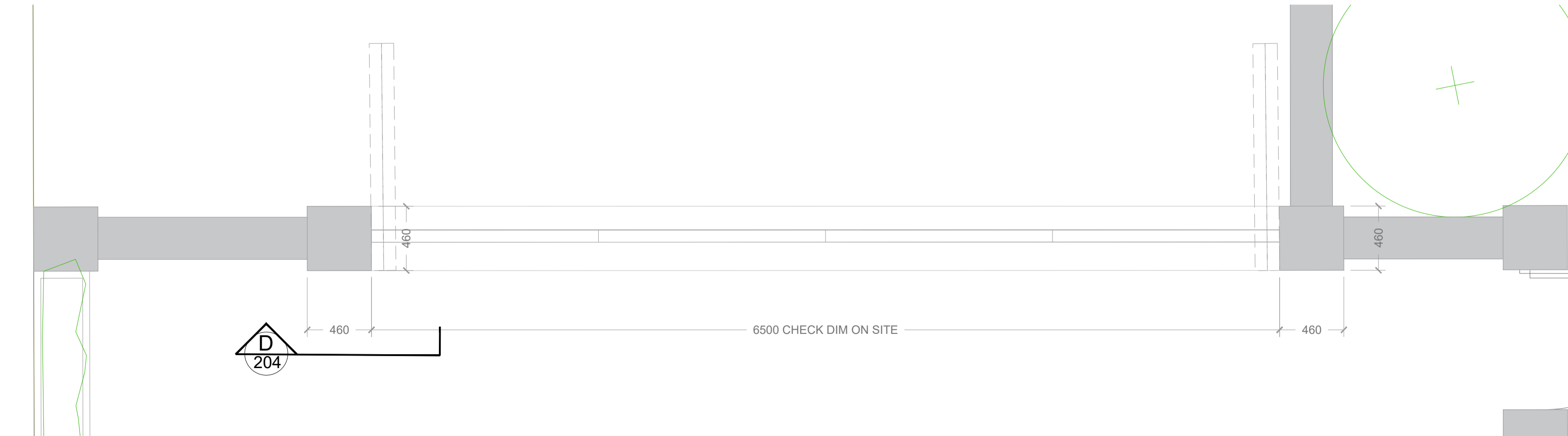
A-046-204 ELEVATION B: NO. 82 DRIVEWAY GATE 02
03 1:25@A1



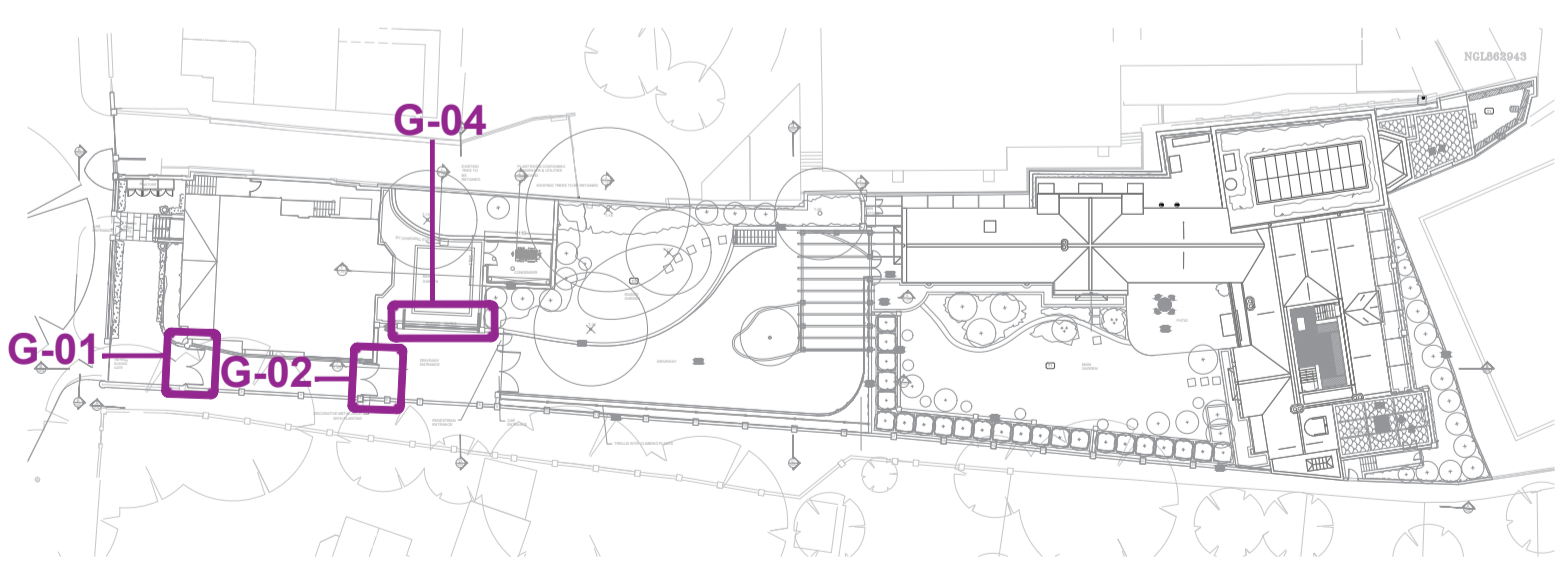
A-046-204 PLAN: NO. 82 DRIVEWAY GATE 02
04 1:25@A1



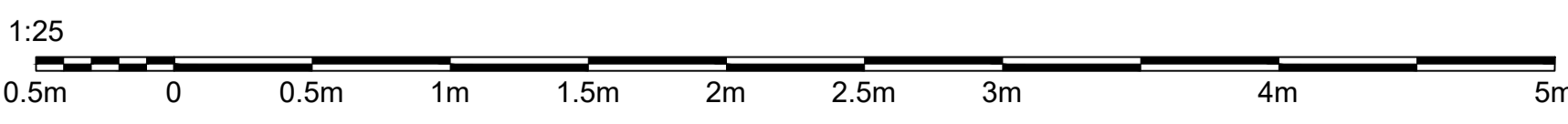
A-046-204 ELEV. D: G-04 NO. 82 AUTOMATED GATES
05 1:25@A1



A-046-204 PLAN: G-04 NO. 82 AUTOMATED GATES
06 1:25@A1



A-046-204 SITE PLAN
07 NTS@A1



Scale bar in metres

18/02/25	C	Issue for Planning: Location updated to no. 82
17/02/25	B	Issue for Planning: Scale bar added.
07/02/25	A	Issue for Tender: Gate G-01 G-02 design revised. G-03 removed.
12/12/24	0	Issue for Tender
Date	Rev:	Revision details

Client
JLCC

Project
82 Fitzjohn's Avenue,
London,
NW3 6NP

Sketch Drawing
Proposed External Gates: G-01, G-02, G-04

Reference	Rev
LA-046-204	C

Scale	Date
1:25-@A1	18/02/25

LUCY ATTWOOD
INTERIOR ARCHITECTURE + DESIGN

1. Refer to Scale Bar & Title Block for drawn Scale.
2. Do not scale, use figured dimensions only.
3. Check all dimensions on site before work is commenced.
4. All goods, materials and workmanship to conform with current building, fire and safety regulations. All specified products installed to manufactures' specifications.
5. Conceptual drawings for interior design purposes.
6. Specifications for all planting and trees to be confirmed by landscaping consultant.
7. Base plans provided by JLCC.
8. Lighting plans to be confirmed by lighting consultant.
9. Photos & images are indicative.