

# THE COURTYARD BUILDING

Plant Screen Updates

07<sup>th</sup> February 2025



EMRYS ARCHITECTS

**DOCUMENT REFERENCE:**

RP-0046 Plant Screen Development

**STATUS:** S2

**REVISION:** P01

**DATE:** 14.02.2025

**PURPOSE:** FOR INFORMATION

**PREPARED:** TLB

**CHECKED:** MB

0.2 | Contents

1.1 | Planning Officer Comments

2.1 | Plant Screen Concept Development

2.2 | Updated Alfred Place Elevation

2.3 | Plant Screen Detail Proposal

# 1

PLANNING OFFICERS COMMENTS

*Received Jan 25 2025*

**The Courtyard Building**

Plant comments:

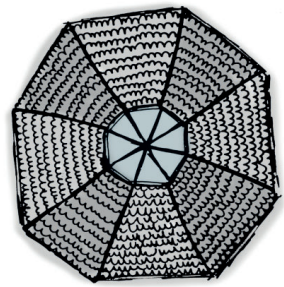
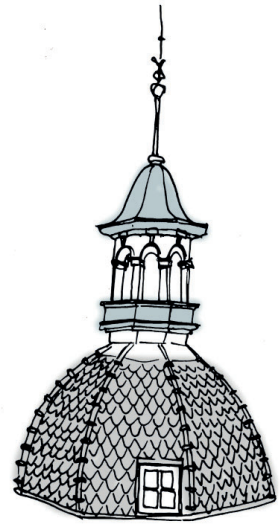
- The main visibility of the plant enclosure is looking west from South Crescent and Store Street, where the Santander bike stand is.
- The current design uses solid panelling, and should be the same colour as the 4<sup>th</sup> floor extension aiming to help blend the plant into the background.
- Efforts should be made to minimise the appearance of the plant above the roofline by reducing the size / dividing it where possible, and in conjunction, using a perforated material or fine grid mesh, aluminium panels for example, to allow more light in and thereby reduce the impact of the plant on the street scene, allowing it to blend into the background and foreground more than it is now. The perforated panels can be tested using the same teal colour of the extension, a lighter shade or perhaps even white. (See different types of perforated screens and treatments below).
- Another option could be to use a solid material for the screen, but a more textured material and pattern, like fluting, to help draw the eye away from it.



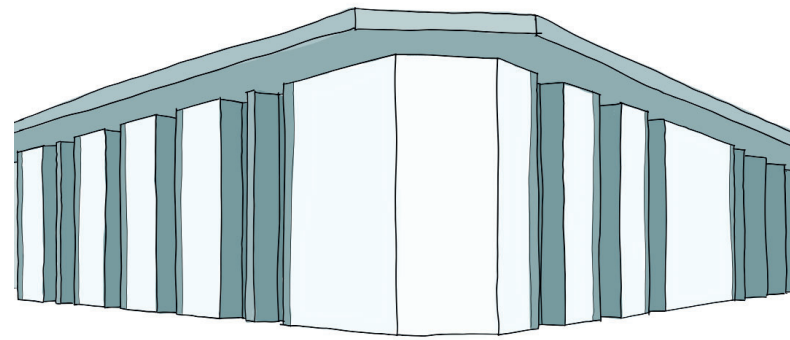
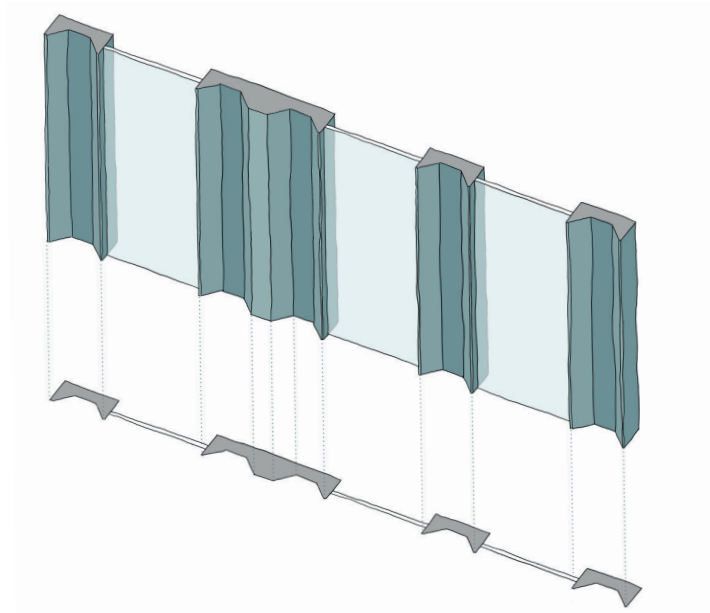
# 2

DESIGN PROPOSAL

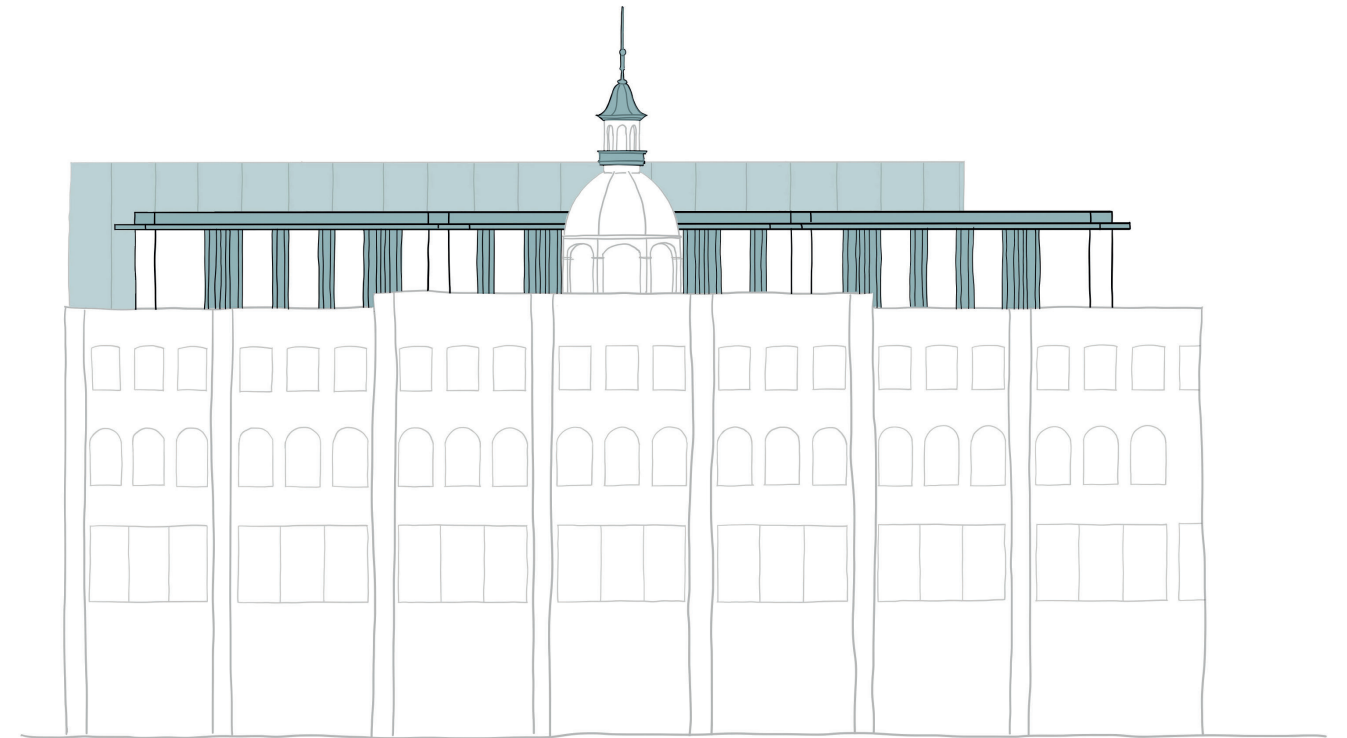
Cupola



Fourth Floor Development



Proposed Plant Screen Design



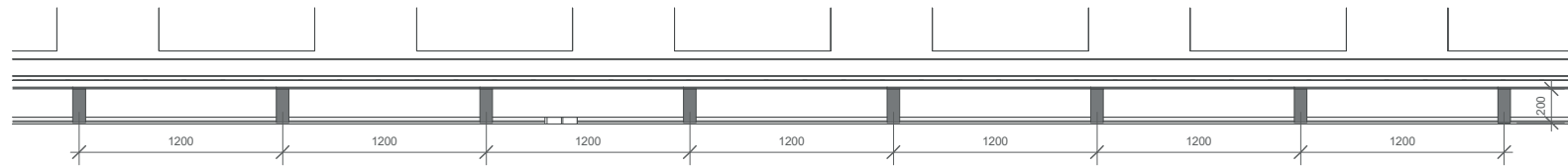
**Teal theme**

Taking inspiration from the teal shade on the top of the Cupola, the colour has constituted a visual theme throughout the scheme and largely in the elevational treatment of the fourth floor. There is an opportunity to continue this into the design of the plant screen, to achieve a sense of continuity within the upper floors.

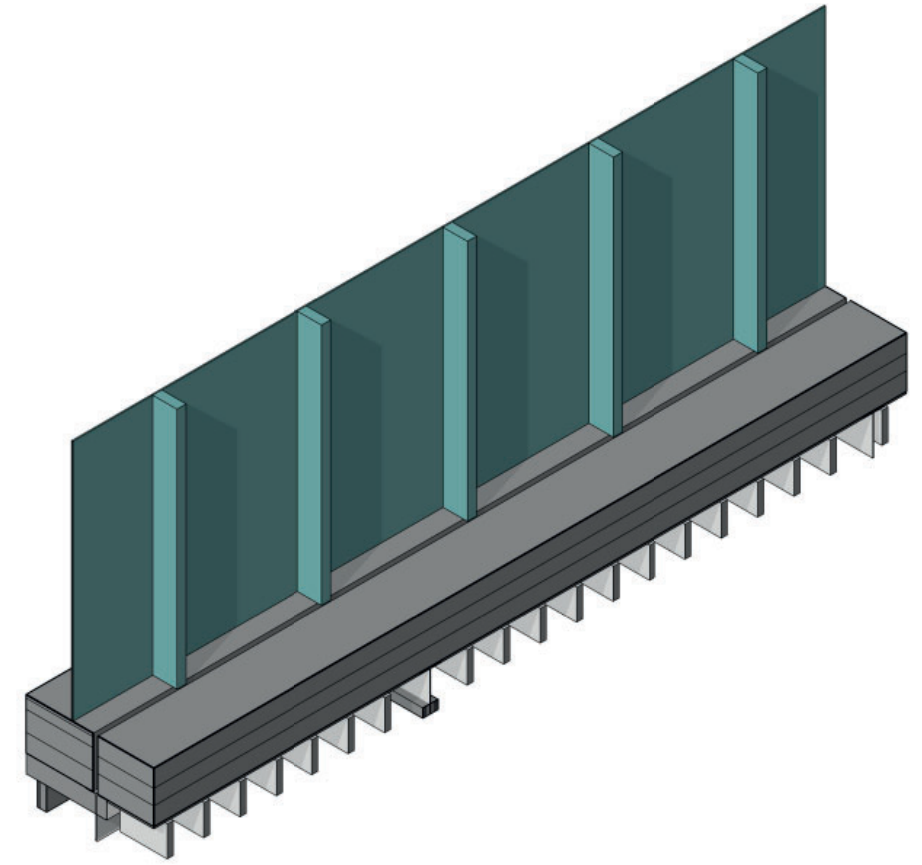


Alfred Place Elevation

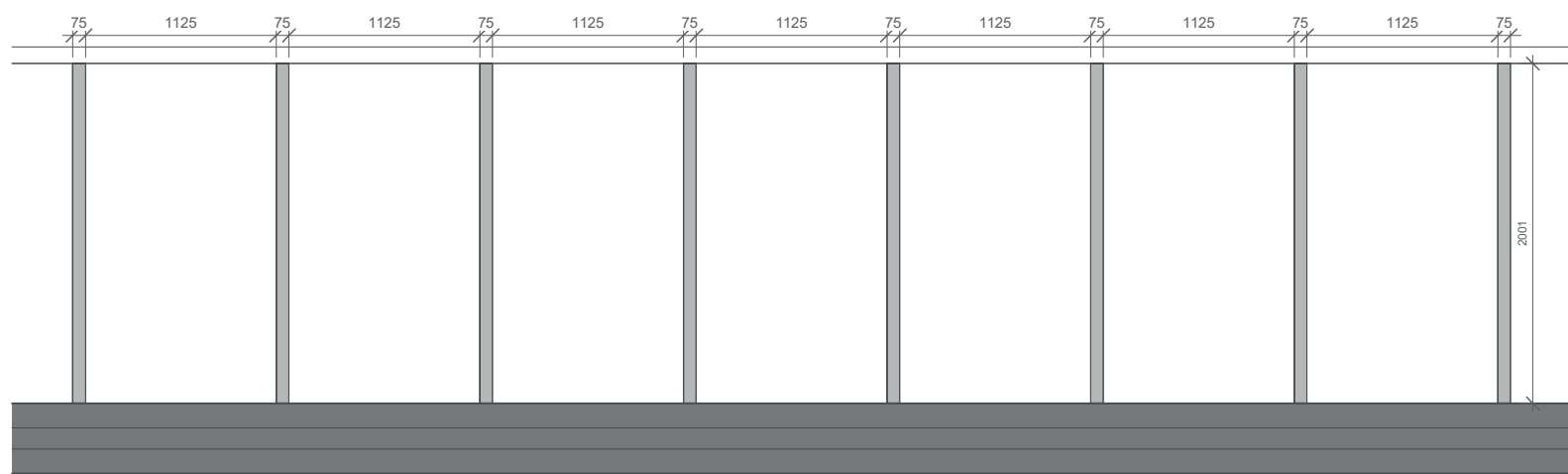
## 2.3 | Plant Screen Detailed Proposal



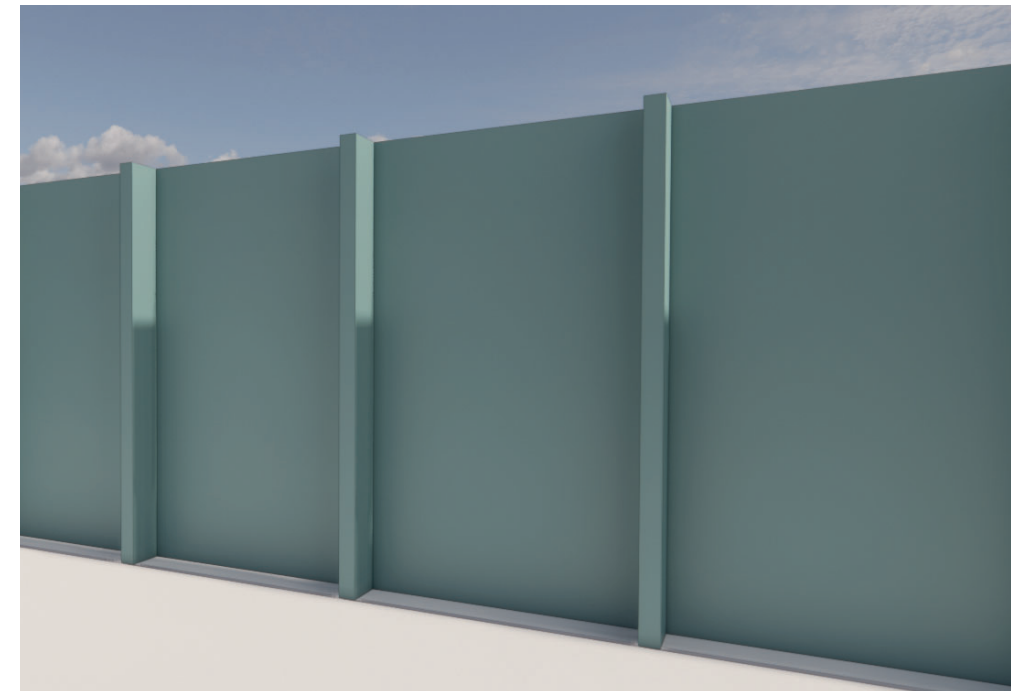
1 07698 - 5F Plant Screen Linear - Plan Callout  
1 : 25



3 07698 - 5F Plant Screen Linear - 3D View



2 07698 - 5F Plant Screen Linear - Elevation  
1 : 25





THANK YOU

**EMRYS ARCHITECTS**

CAP HOUSE  
9-12 LONG LANE  
LONDON EC1A 9HA  
020 7726 5060  
[emrysarchitects.com](http://emrysarchitects.com)