

This drawing is the property of DC Architecture+Design Ltd, and they reserve the copyright. DC+Partners is the trading name of DC Architecture+Design Ltd. The drawing is issued on the condition that it is not copied, reproduced, retained or disclosed, in whole or part, to any unauthorised person without the consent from DC Architecture+Design Ltd. Figures and dimensions are to be taken in preference to those scaled. The contractor is to verify all dimensions and conditions on site.

NOTES:

ALL FIXINGS INTO BRICKWORK TO BE INTO MORTAR JOINTS

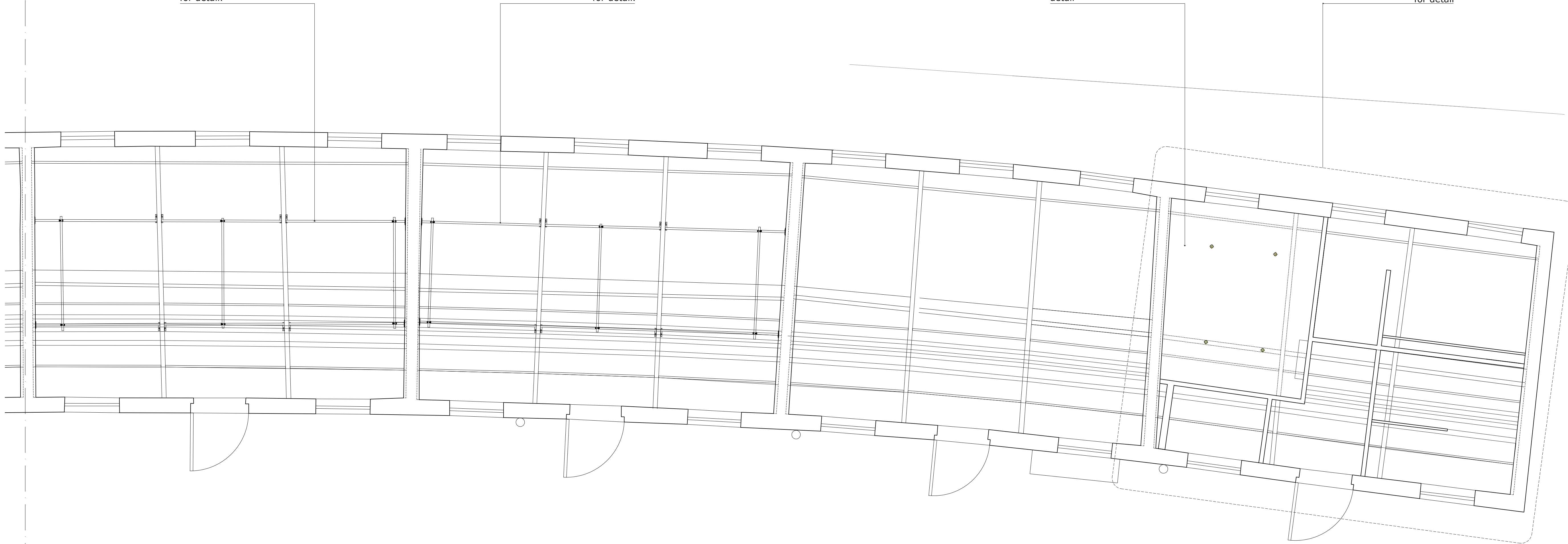
SEE PROPOSED FIRST FLOOR RCP 1

Demountable rigging for lighting. See LOP001_DE_A_(63)001, LOP001_DE_A_(63)002 & LOP001_DE_A_(63)003 for detail.

Demountable rigging for lighting. See LOP001_DE_A_(63)001, LOP001_DE_A_(63)002 & LOP001_DE_A_(63)003 for detail.

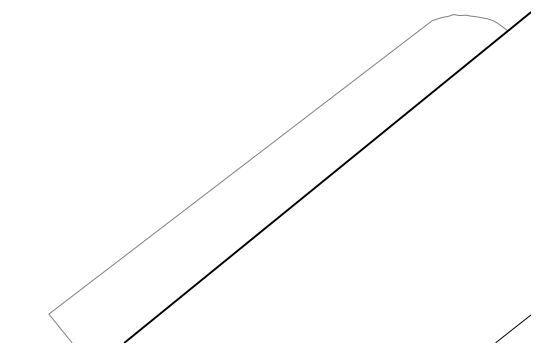
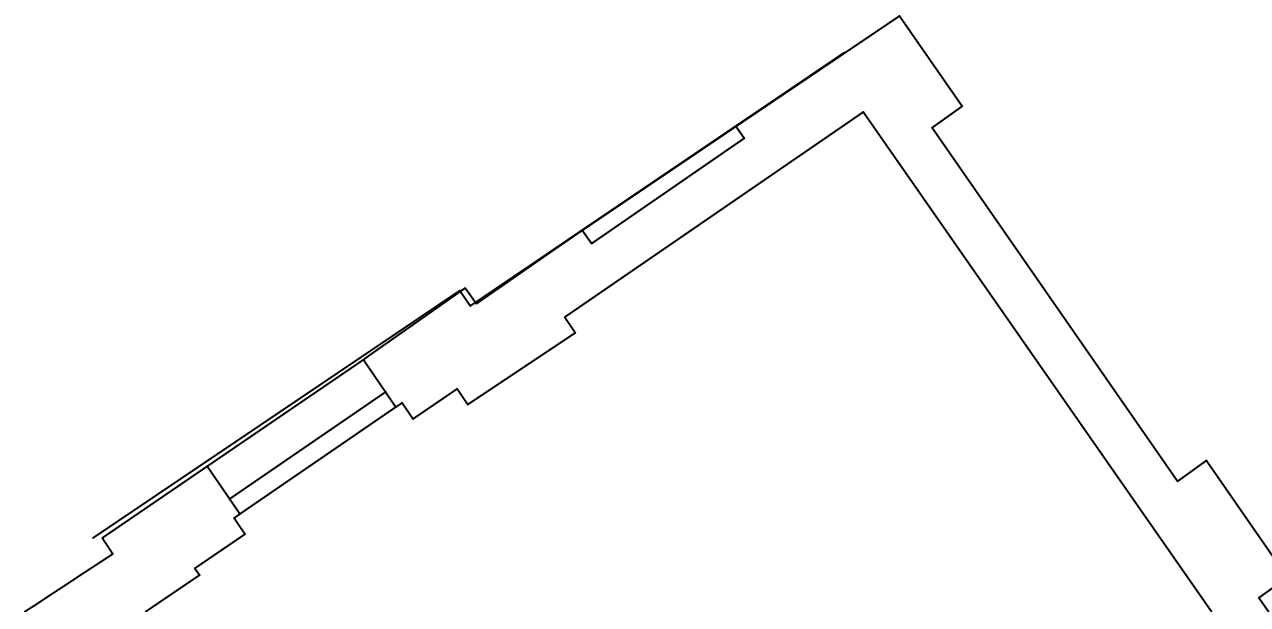
Plasterboard ceiling beneath truss and eaves to enclose storage / cellar area with spot lights. See LOP_DE_A_(71)001 for detail

For bathrooms and Cellar storage see drawing LOP001_DE_A_(71)001 for detail



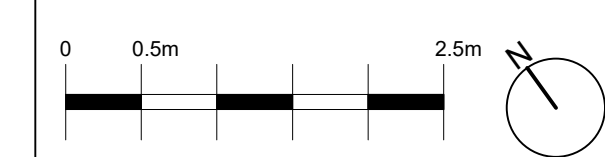
SEE PROPOSED FIRST FLOOR RCP 1

PL PROPOSED FIRST FLOOR RCP 2 1:50@A1, 1:100@A3



PLANNING

REVISIONS



Project : LIVE ODYSSEY CAMDEN STABLES

Client : LIVE ODYSSEY PROMOTIONS

Scale: 1:50 @A1 / 1:100@A3

Title : PROPOSED FIRST FLOOR RCP 2

Drawing Number : LOP001_PL_A_(37)101_2

Date : 18.11.2024 Drawn by : CF Approved by : XX