

© Crown copyright and Landmark Information Group Limited 2023. All Rights Reserved.



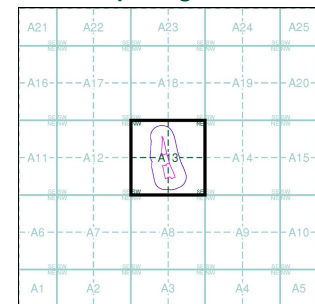
Ordnance Survey Plan
Published 1953
Source map scale - 1:1,250

The historical maps shown were reproduced from maps predominantly held at the scale adopted for England, Wales and Scotland in the 1840's. In 1854 the 1:2,500 scale was adopted for mapping urban areas and by 1895 it covered the whole of what were considered to be the cultivated parts of Great Britain. The published date given below is often some years later than the surveyed date. Before 1938, all OS maps were based on the Cassini Projection, with independent surveys of a single county or group of counties, giving rise to significant inaccuracies in outlying areas.

Map Name(s) and Date(s)

TQ2984SW 1953 1:1,250	TQ2984SE 1953 1:1,250	TQ3084SW 1953 1:1,250
TQ2983NW 1953 1:1,250	TQ2983NE 1953 1:1,250	TQ3083NW 1953 1:1,250

Historical Map - Segment A13



Order Details

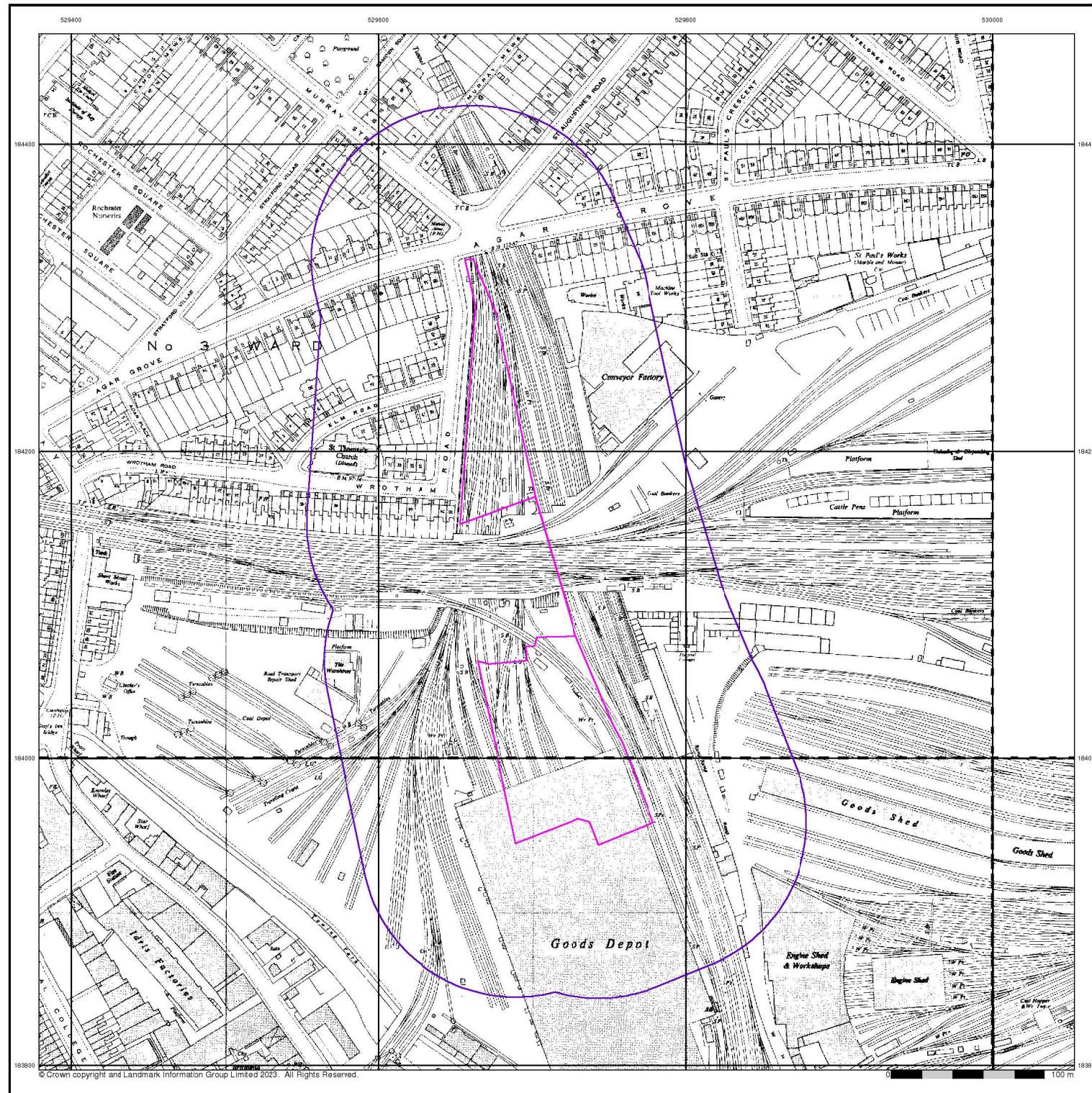
Order Number: 310607196_1_1
 Customer Ref: J23105
 National Grid Reference: 529700, 184120
 Slice: A
 Site Area (Ha): 1.41
 Search Buffer (m): 100

Site Details

120-136, Camley Street, LONDON, N1C 4PG

Landmark
 INFORMATION GROUP

Tel: 0844 844 9952
 Fax: 0844 844 9951
 Web: www.envirocheck.co.uk



© Crown copyright and Landmark Information Group Limited 2023. All Rights Reserved.



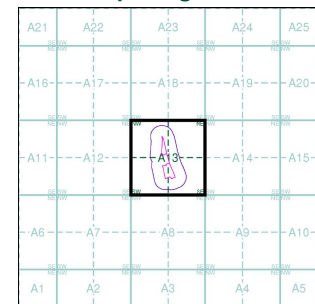
Ordnance Survey Plan
Published 1954
Source map scale - 1:2,500

The historical maps shown were reproduced from maps predominantly held at the scale adopted for England, Wales and Scotland in the 1840's. In 1854 the 1:2,500 scale was adopted for mapping urban areas and by 1896 it covered the whole of what were considered to be the cultivated parts of Great Britain. The published date given below is often some years later than the surveyed date. Before 1938, all OS maps were based on the Cassini Projection, with independent surveys of a single county or group of counties, giving rise to significant inaccuracies in outlying areas.

Map Name(s) and Date(s)

TQ2984	1954	12,500
TQ2983	1954	12,500
TQ3083	1954	12,500

Historical Map - Segment A13



Order Details

Order Number: 310607196_1_1
 Customer Ref: J23105
 National Grid Reference: 529700, 184120
 Slice: A
 Site Area (Ha): 1.41
 Search Buffer (m): 100

Site Details

120-136, Camley Street, LONDON, N1C 4PG



Tel: 0844 844 9952
 Fax: 0844 844 9951
 Web: www.envirocheck.co.uk



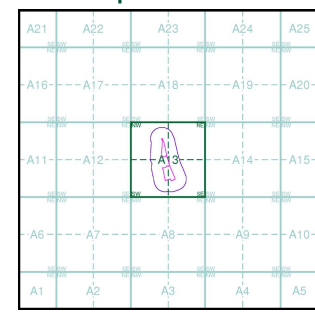
Ordnance Survey Plan Published 1957 - 1958 Source map scale - 1:10,000

The historical maps shown were reproduced from maps predominantly held at the scale adopted for England, Wales and Scotland in the 1840's. In 1854 the 1:2,500 scale was adopted for mapping urban areas; these maps were used to update the 1:10,560 maps. The published date given therefore is often some years later than the surveyed date. Before 1938, all OS maps were based on the Cassini Projection, with independent surveys of a single county or group of counties, giving rise to significant inaccuracies in outlying areas. In the late 1940's, a Provisional Edition was produced, which updated the 1:10,560 mapping from a number of sources. The maps appear unfinished - with all military camps and other strategic sites removed. These maps were initially overprinted with the National Grid. In 1970, the first 1:10,000 maps were produced using the Transverse Mercator Projection. The revision process continued until recently, with new editions appearing every 10 years or so for urban areas.

Map Name(s) and Date(s)

TQ28NE	1958	1:10,560
TQ28SE	1957	1:10,560
TQ38SW	1957	1:10,560

Historical Map - Slice A



Order Details

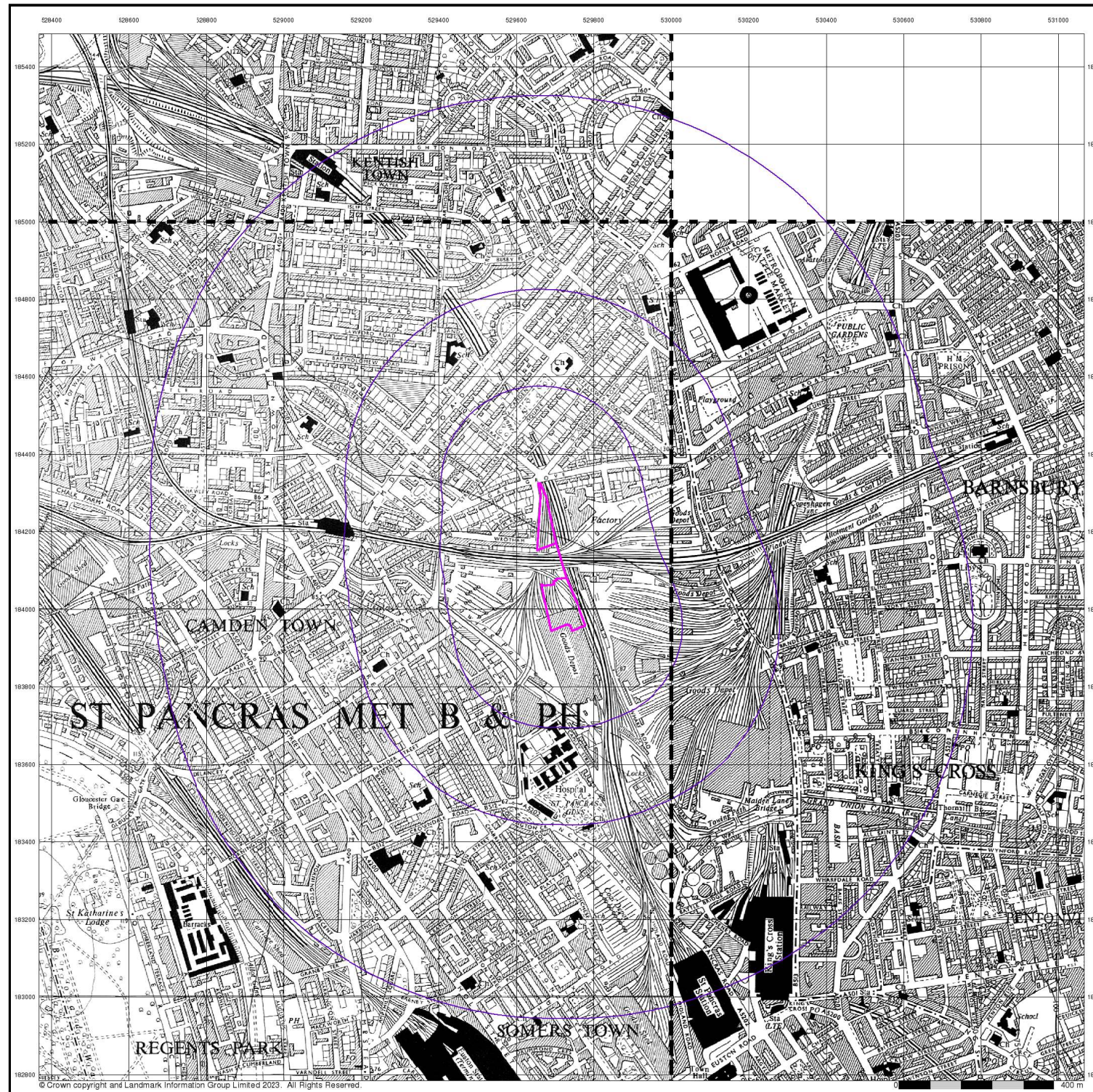
Order Number: 310607196_1_1
Customer Ref: J23105
National Grid Reference: 529700, 184120
Slice: A
Site Area (Ha): 1.41
Search Buffer (m): 1000

Site Details

120-136, Camley Street, LONDON, N1C 4PG



Tel: 0844 844 9952
Fax: 0844 844 9951
Web: www.envirocheck.co.uk





Ordnance Survey Plan

Published 1962 - 1971

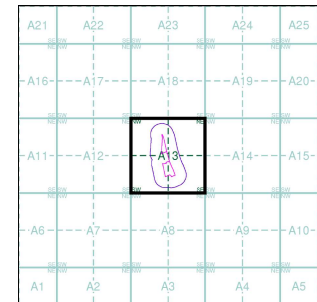
Source map scale - 1:1,250

The historical maps shown were reproduced from maps predominantly held at the scale adopted for England, Wales and Scotland in the 1840's. In 1854 the 1:2,500 scale was adopted for mapping urban areas and by 1896 it covered the whole of what were considered to be the cultivated parts of Great Britain. The published date given below is often some years later than the surveyed date. Before 1938, all OS maps were based on the Cassini Projection, with independent surveys of a single county or group of counties, giving rise to significant inaccuracies in outlying areas.

Map Name(s) and Date(s)

TQ2984SW 1969 1:1,250	TQ2984SE 1969 1:1,250	TQ3084SW 1971 1:1,250
TQ2983NW 1962 1:1,250	TQ2983NE 1969 1:1,250	TQ3083NW 1970 1:1,250

Historical Map - Segment A13



Order Details

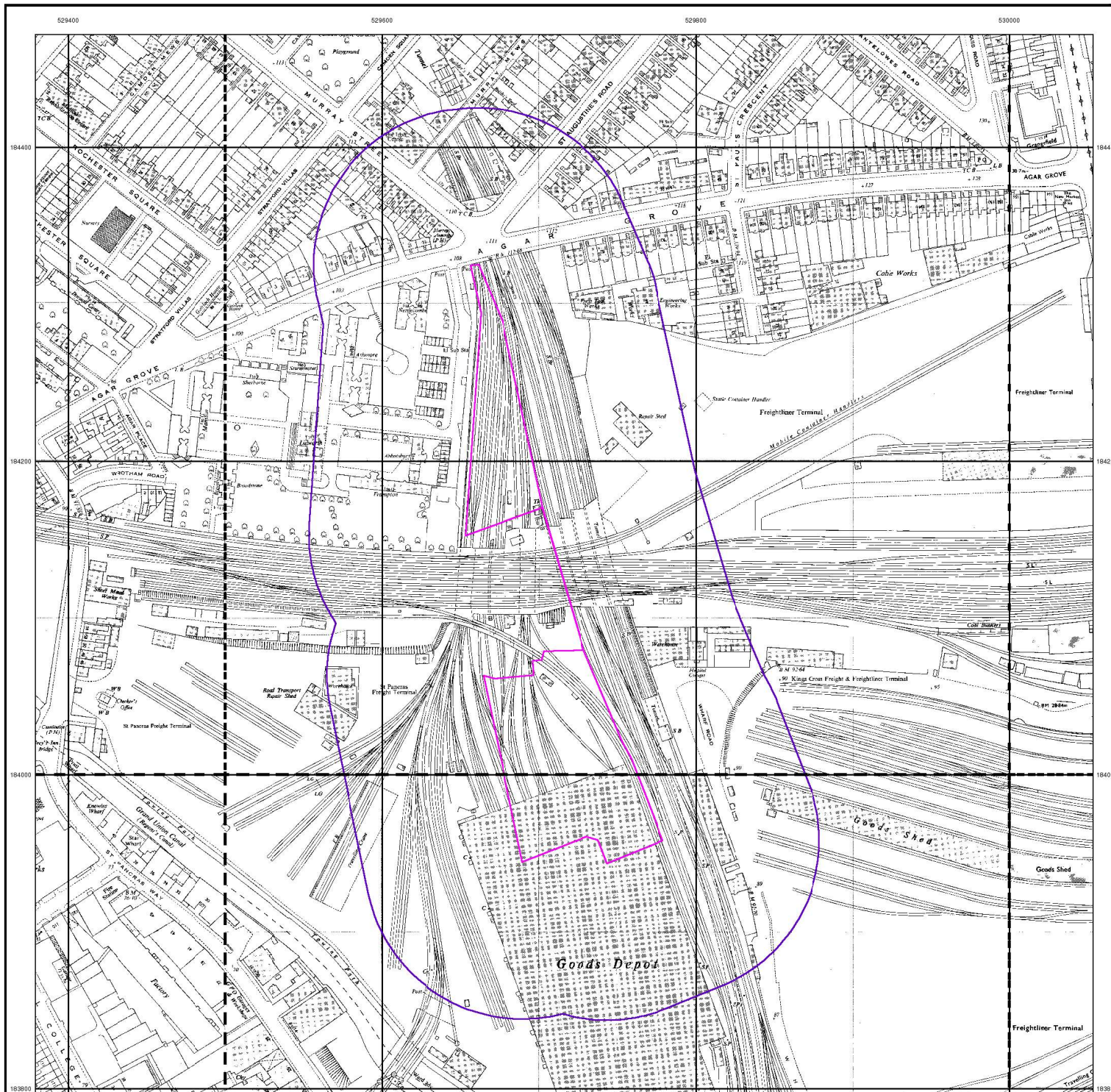
Order Number: 310607196_1_1
 Customer Ref: J23105
 National Grid Reference: 529700, 184120
 Slice: A
 Site Area (Ha): 1.41
 Search Buffer (m): 100

Site Details

120-136, Camley Street, LONDON, N1C 4PG



Tel: 0844 844 9952
 Fax: 0844 844 9951
 Web: www.envirocheck.co.uk

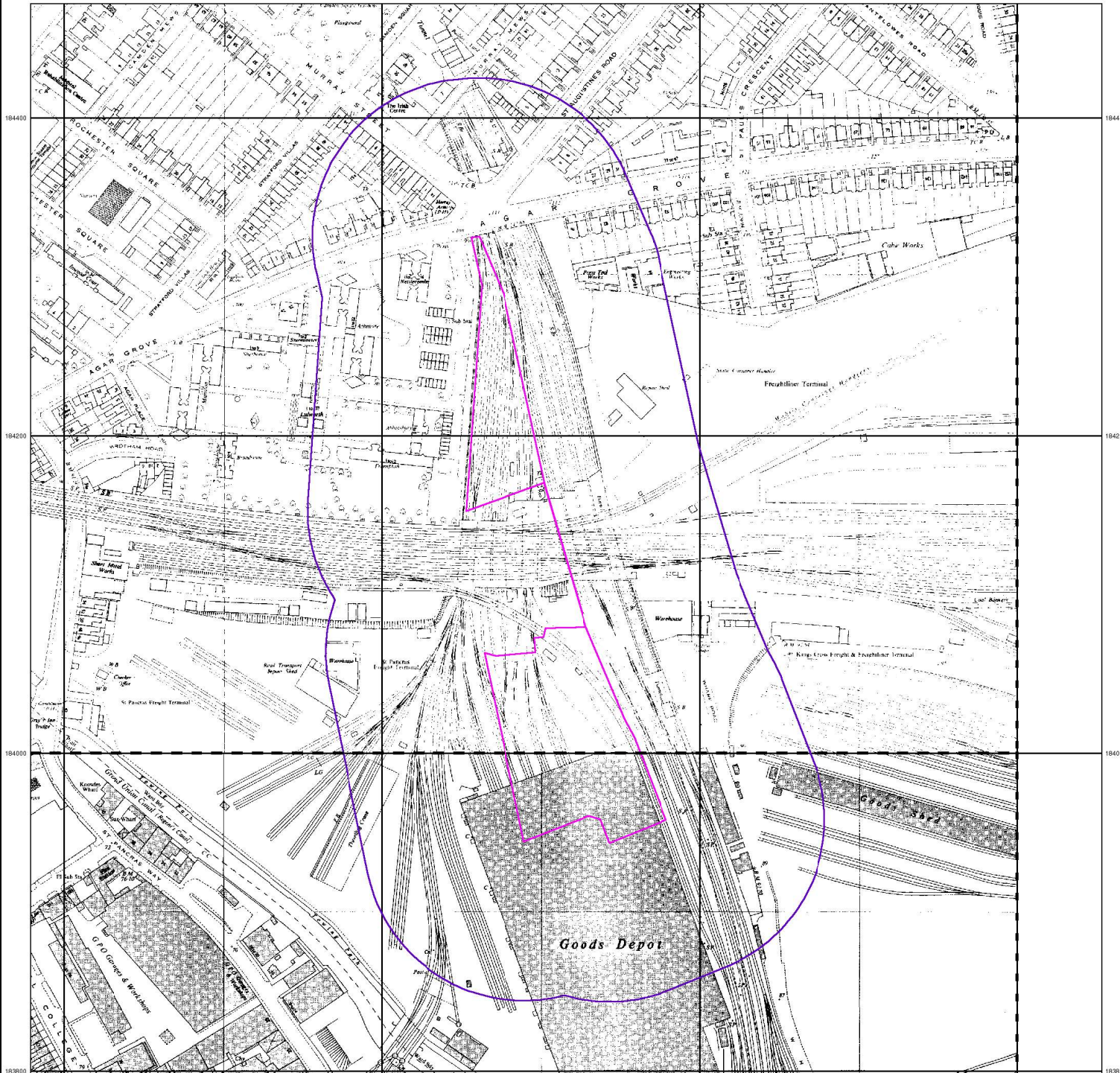


529400

529600

529800

530000



Ordnance Survey Plan

Published 1970 - 1971

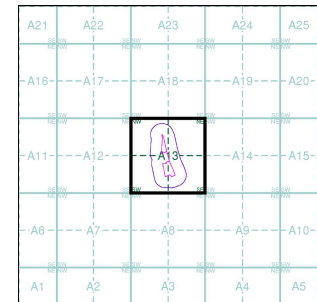
Source map scale - 1:2,500

The historical maps shown were reproduced from maps predominantly held at the scale adopted for England, Wales and Scotland in the 1840's. In 1854 the 1:2,500 scale was adopted for mapping urban areas and by 1896 it covered the whole of what were considered to be the cultivated parts of Great Britain. The published date given below is often some years later than the surveyed date. Before 1938, all OS maps were based on the Cassini Projection, with independent surveys of a single county or group of counties, giving rise to significant inaccuracies in outlying areas.

Map Name(s) and Date(s)

TQ2984	1970	1:2,500
TQ2983	1971	1:2,500

Historical Map - Segment A13



Order Details

Order Number: 310607196_1_1
 Customer Ref: J23105
 National Grid Reference: 529700, 184120
 Slice: A
 Site Area (Ha): 1.41
 Search Buffer (m): 100

Site Details

120-136, Camley Street, LONDON, N1C 4PG



Tel: 0844 844 9952
 Fax: 0844 844 9951
 Web: www.envirocheck.co.uk