

**Site**

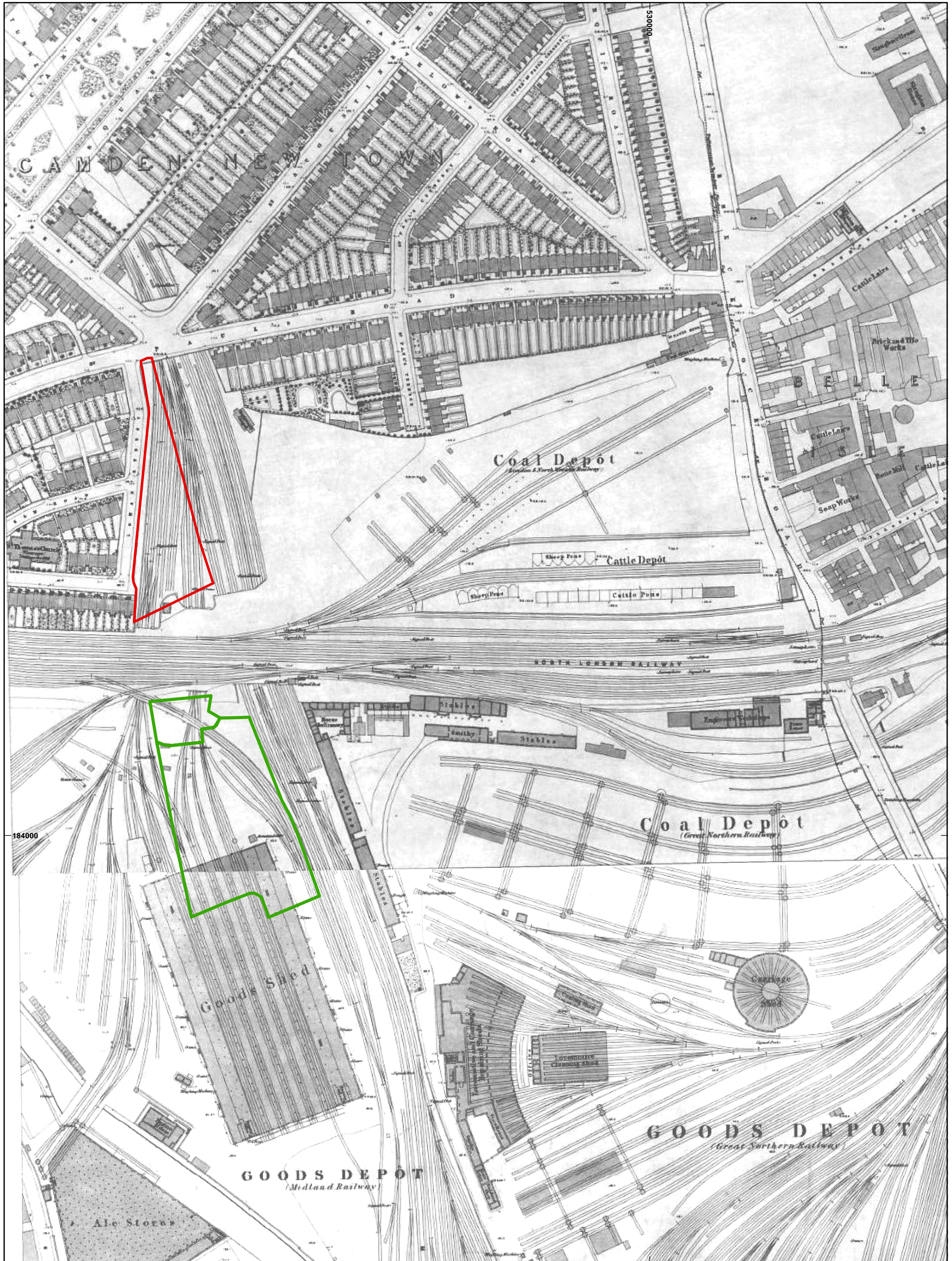
- Site A (North)
- Site B (South)

This material is for client report only © Wessex Archaeology.  
No unauthorised reproduction.

Reproduced from the 1875 Ordnance Survey map

Date:	17/07/2023
Revision Number:	0
Scale:	Not to scale
Illustrator:	Thomas_P
Path:	

R:/PROJECTS/281160/GIS/FigsMXD



**Site**

- Site A (North)
- Site B (South)



This material is for client report only © Wessex Archaeology.  
No unauthorised reproduction.

Reproduced from the 1875 Ordnance Survey map

Date:	17/07/2023	Revision Number:	0
Scale:	Not to Scale	Illustrator:	Thomas_P
Path:	wessex/Projects/xxxxx/GIS		



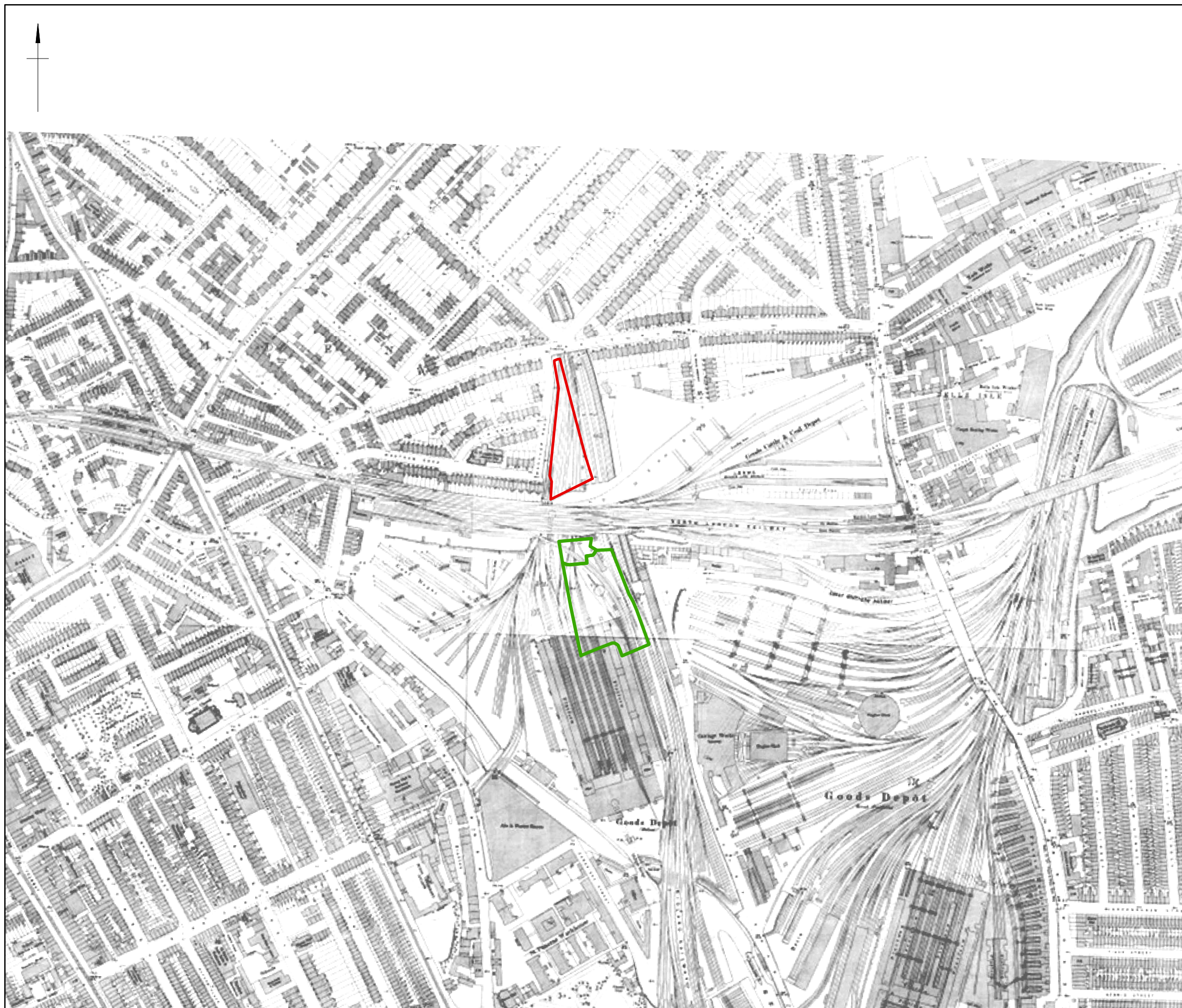
1875 edition Ordnance Survey map (detailed)

Figure 8



**Site**

- Site A (North)
- Site B (South)



This material is for client report only © Wessex Archaeology.  
No unauthorised reproduction.  
Reproduced from the 1896 Ordnance Survey map

Date:	17/07/2023
Revision Number:	0
Scale:	Not to scale
Illustrator:	Thomas_P
Path:	

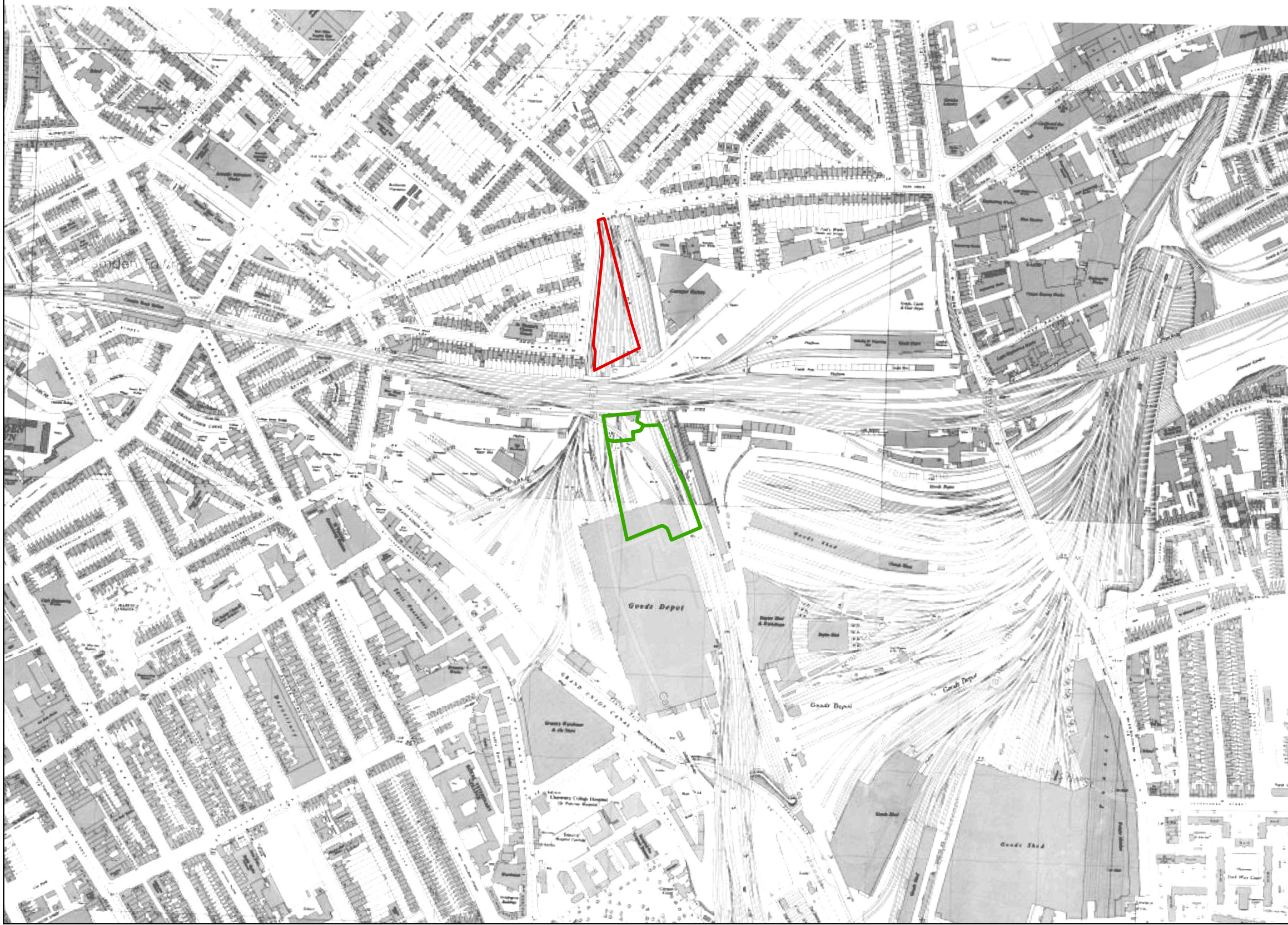
R:/PROJECTS/281160/GIS/FigsMXD



**Site**

 Site A (North)

 Site B (South)



This material is for client report only © Wessex Archaeology.  
No unauthorised reproduction.  
Reproduced from the 1940 Ordnance Survey map

Date:	17/07/2023
Revision Number:	0
Scale:	Not to scale
Illustrator:	Thomas_P
Path:	

R:/PROJECTS/281160/GIS/FigsMXD

## APPENDICES

### Appendix 1: Terminology

#### Glossary

The terminology used in this assessment follows definitions contained within Annex 2 of NPPF:

<b>Archaeological interest</b>	There will be archaeological interest in a heritage asset if it holds, or potentially holds, evidence of past human activity worthy of expert investigation at some point.
<b>Conservation (for heritage policy)</b>	The process of maintaining and managing change to a heritage asset in a way that sustains and, where appropriate, enhances its significance.
<b>Designated heritage asset</b>	A World Heritage Site, Scheduled Monument, Listed Building, Protected Wreck Site, Registered Park and Garden, Registered Battlefield or Conservation Area designated under the relevant legislation.
<b>Heritage asset</b>	A building, monument, site, place, area or landscape identified as having a degree of significance meriting consideration in planning decisions, because of its heritage interest. It includes designated heritage assets and assets identified by the local planning authority (including local listing).
<b>Historic environment</b>	All aspects of the environment resulting from the interaction between people and places through time, including all surviving physical remains of past human activity, whether visible, buried or submerged, and landscaped and planted or managed flora.
<b>Historic environment record</b>	Information services that seek to provide access to comprehensive and dynamic resources relating to the historic environment of a defined geographic area for public benefit and use.
<b>Setting of a heritage asset</b>	The surroundings in which a heritage asset is experienced. Its extent is not fixed and may change as the asset and its surroundings evolve. Elements of a setting may make a positive or negative contribution to the significance of an asset, may affect the ability to appreciate that significance or may be neutral.
<b>Significance (for heritage policy)</b>	The value of a heritage asset to this and future generations because of its heritage interest. The interest may be archaeological, architectural, artistic or historic. Significance derives not only from a heritage asset's physical presence, but also from its setting. For World Heritage Sites, the cultural value described within each site's Statement of Outstanding Universal Value forms part of its significance.

#### Chronology

Where referred to in the text, the main archaeological periods are broadly defined by the following date ranges:

Prehistoric		Historic	
<b>Palaeolithic</b>	970,000–10,000 BC	<b>Romano-British</b>	AD 43–410
<b>Mesolithic</b>	10,000–4000 BC	<b>Saxon</b>	AD 410–1066
<b>Neolithic</b>	4000–2400 BC	<b>Medieval</b>	AD 1066–1500
<b>Bronze Age</b>	2400–700 BC	<b>Post-medieval</b>	AD 1500–1800
<b>Iron Age</b>	700 BC–AD 43	<b>19th century</b>	AD 1800–1899
		<b>Modern</b>	1900–present day

## Appendix 2: Legislative and planning framework

### Designated Heritage Assets

Designation	Associated Legislation	Overview
<b>World Heritage Sites</b>	-	The United Nations Educational, Scientific and Cultural Organisation (UNESCO) World Heritage Committee inscribes World Heritage Sites for their Outstanding Universal Value (OUV) – <i>cultural and/or natural significance which is so exceptional as to transcend national boundaries and to be of common importance for present and future generations of all humanity</i> . England protects its World Heritage Sites and their settings, including any buffer zones or equivalent, through the statutory designation process and through the planning system. The National Planning Policy Framework sets out detailed policies for the conservation and enhancement of the historic environment, including World Heritage Sites, through both plan-making and decision-taking.
<b>Scheduled Monuments and Areas of Archaeological Importance</b>	<i>Ancient Monuments and Archaeological Areas Act 1979</i>	Under the <i>Ancient Monuments and Archaeological Areas Act 1979</i> , the Secretary of State (DCMS) can schedule any site which appears to be of national importance because of its historic, architectural, traditional, artistic or archaeological interest. The historic town centres of Canterbury, Chester, Exeter, Hereford and York have been designated as Archaeological Areas of Importance under Part II of the <i>Ancient Monuments and Archaeological Areas Act 1979</i> . Additional controls are placed upon works affecting Scheduled Monuments and Areas of Archaeological Importance under the Act. The consent of the Secretary of State (DCMS), as advised by Historic England, is required for certain works affecting Scheduled Monuments.
<b>Listed Buildings</b>	<i>Planning (Listed Buildings and Conservation Areas) Act 1990</i>	In England, under Section 1 of the <i>Planning (Listed Buildings and Conservation Areas) Act 1990</i> , the Secretary of State is required to compile lists of buildings of special architectural or historic interest, on advice from English Heritage/Historic England. Works affecting Listed Buildings are subject to additional planning controls administered by Local Planning Authorities. Historic England is a statutory consultee in certain works affecting Listed Buildings. Under certain circumstances, Listed Building Consent is required for works affecting Listed Buildings.
<b>Conservation Areas</b>	<i>Planning (Listed Buildings and Conservation Areas) Act 1990</i>	A Conservation Area is an area which has been designated because of its special architectural or historic interest, the character or appearance of which it is desirable to preserve or enhance. In most cases, Conservation Areas are designated by Local Planning Authorities. Section 72 (1) of the <i>Planning (Listed Buildings and Conservation Areas) Act 1990</i> requires authorities to have regard to the fact that there is a Conservation Area when exercising any of their functions under the Planning Acts and to pay special attention to the desirability of preserving or enhancing the character or appearance of Conservation Areas. Although a locally administered designation, Conservation Areas may nevertheless be of national importance and significant developments within a Conservation Area are referred to Historic England.
<b>Registered Parks and Gardens and Registered Battlefields</b>	<i>Historic Buildings and Ancient Monuments Act 1953</i> <i>National Heritage Act 1983</i>	The Register of Parks and Gardens was established under the <i>National Heritage Act 1983</i> . The Battlefields Register was established in 1995. Both Registers are administered by Historic England. These designations are non-statutory but are, nevertheless, material considerations in the planning process. Historic England and The Garden's Trust (formerly known as The Garden History Society) are statutory consultees in works affecting Registered Parks and Gardens
<b>Protected Wreck Sites</b>	<i>Protection of Wrecks Act 1973</i>	The <i>Protection of Wrecks Act 1973</i> allows the Secretary of State to designate a restricted area around a wreck to prevent uncontrolled interference. These statutorily protected areas are likely to contain the remains of a vessel, or its contents, which are of historical, artistic or archaeological importance.



## National Planning Policy Framework (NPPF)

<b>NPPF Section 16: Conserving and enhancing the historic environment</b>	
<b>Para. 194</b>	In determining applications, local planning authorities should require an applicant to describe the significance of any heritage assets affected, including any contribution made by their setting. The level of detail should be proportionate to the assets' importance and no more than is sufficient to understand the potential impact of the proposal on their significance. As a minimum the relevant historic environment record should have been consulted and the heritage assets assessed using appropriate expertise where necessary. Where a site on which development is proposed includes, or has the potential to include, heritage assets with archaeological interest, local planning authorities should require developers to submit an appropriate desk-based assessment and, where necessary, a field evaluation.
<b>Para. 195</b>	Local planning authorities should identify and assess the particular significance of any heritage asset that may be affected by a proposal (including by development affecting the setting of a heritage asset) taking account of the available evidence and any necessary expertise. They should take this into account when considering the impact of a proposal on a heritage asset, to avoid or minimise any conflict between the heritage asset's conservation and any aspect of the proposal.
<b>Para. 197</b>	In determining applications, local planning authorities should take account of: a) the desirability of sustaining and enhancing the significance of heritage assets and putting them to viable uses consistent with their conservation; b) the positive contribution that conservation of heritage assets can make to sustainable communities including their economic vitality; and c) the desirability of new development making a positive contribution to local character and distinctiveness.
<b>Para. 199</b>	When considering the impact of a proposed development on the significance of a designated heritage asset, great weight should be given to the asset's conservation (and the more important the asset, the greater the weight should be). This is irrespective of whether any potential harm amounts to substantial harm, total loss or less than substantial harm to its significance.
<b>Para. 200</b>	Any harm to, or loss of, the significance of a designated heritage asset (from its alteration or destruction, or from development within its setting), should require clear and convincing justification. Substantial harm to or loss of:  a) grade II listed buildings, or grade II registered parks or gardens, should be exceptional; b) assets of the highest significance, notably scheduled monuments, protected wreck sites, registered battlefields, grade I and II* listed buildings, grade I and II* registered parks and gardens, and World Heritage Sites, should be wholly exceptional <sup>68</sup> .  <sup>68</sup> Non-designated heritage assets of archaeological interest, which are demonstrably of equivalent significance to scheduled monuments, should be considered subject to the policies for designated heritage assets.
<b>Para. 201</b>	Where a proposed development will lead to substantial harm to (or total loss of significance of) a designated heritage asset, local planning authorities should refuse consent, unless it can be demonstrated that the substantial harm or total loss is necessary to achieve substantial public benefits that outweigh that harm or loss, or all of the following apply:  a) the nature of the heritage asset prevents all reasonable uses of the site; and b) no viable use of the heritage asset itself can be found in the medium term through appropriate marketing that will enable its conservation; and c) conservation by grant-funding or some form of not for profit, charitable or public ownership is demonstrably not possible; and d) the harm or loss is outweighed by the benefit of bringing the site back into use.
<b>Para. 202</b>	Where a development proposal will lead to less than substantial harm to the significance of a designated heritage asset, this harm should be weighed against the public benefits of the proposal including, where appropriate, securing its optimum viable use.
<b>Para. 203</b>	The effect of an application on the significance of a non-designated heritage asset should be taken into account in determining the application. In weighing applications that directly or indirectly affect non-designated heritage assets, a balanced judgement will be required having regard to the scale of any harm or loss and the significance of the heritage asset.
<b>Para. 205</b>	Local planning authorities should require developers to record and advance understanding of the significance of any heritage assets to be lost (wholly or in part) in a manner proportionate to their importance and the impact, and to make this evidence (and any archive generated) publicly accessible <sup>69</sup> . However, the ability to record evidence of our past should not be a factor in deciding whether such loss should be permitted.



<b>NPPF Section 16: Conserving and enhancing the historic environment</b>	
	<sup>69</sup> Copies of evidence should be deposited with the relevant historic environment record, and any archives with a local museum or other public depository.
<b>Para. 206</b>	Local planning authorities should look for opportunities for new development within Conservation Areas and World Heritage Sites, and within the setting of heritage assets, to enhance or better reveal their significance. Proposals that preserve those elements of the setting that make a positive contribution to the asset (or which better reveal its significance) should be treated favourably.
<b>Para. 207</b>	Not all elements of a Conservation Area or World Heritage Site will necessarily contribute to its significance. Loss of a building (or other element) which makes a positive contribution to the significance of the Conservation Area or World Heritage Site should be treated either as substantial harm under paragraph 195 or less than substantial harm under paragraph 196, as appropriate, taking into account the relative significance of the element affected and its contribution to the significance of the Conservation Area or World Heritage Site as a whole.
<b>Para. 208</b>	Local planning authorities should assess whether the benefits of a proposal for enabling development, which would otherwise conflict with planning policies but which would secure the future conservation of a heritage asset, outweigh the disbenefits of departing from those policies.





## Local Planning Policy

Camden Local Plan (Adopted July 2017)		
Policy ref.	Title	Scope
D2	Heritage	<p>The Council will preserve and, where appropriate, enhance Camden's rich and diverse heritage assets and their settings, including conservation areas, listed buildings, archaeological remains, scheduled ancient monuments and historic parks and gardens and locally listed heritage assets.</p> <p><b>Designated heritage assets</b> Designed heritage assets include conservation areas and listed buildings. The Council will not permit the loss of or substantial harm to a designated heritage asset, including conservation areas and Listed Buildings, unless it can be demonstrated that the substantial harm or loss is necessary to achieve substantial public benefits that outweigh that harm or loss, or all of the following apply:</p> <ol style="list-style-type: none"> <li>the nature of the heritage asset prevents all reasonable uses of the site;</li> <li>no viable use of the heritage asset itself can be found in the medium term through appropriate marketing that will enable its conservation;</li> <li>conservation by grant-funding or some form of charitable or public ownership is demonstrably not possible; and</li> <li>the harm or loss is outweighed by the benefit of bringing the site back into use.</li> </ol> <p>The Council will not permit development that results in harm that is less than substantial to the significance of a designated heritage asset unless the public benefits of the proposal convincingly outweigh that harm.</p> <p><b>Conservation areas</b> Conservation areas are designated heritage assets and this section should be read in conjunction with the section above headed 'designated heritage assets'. In order to maintain the character of Camden's conservation areas, the Council will take account of conservation area statements, appraisals and management strategies when assessing applications within conservation areas. The Council will:</p> <ol style="list-style-type: none"> <li>require that development within conservation areas preserves or, where possible, enhances the character or appearance of the area;</li> <li>resist the total or substantial demolition of an unlisted building that makes a positive contribution to the character or appearance of a conservation area;</li> <li>resist development outside of a conservation area that causes harm to the character or appearance of that conservation area; and</li> <li>preserve trees and garden spaces which contribute to the character and appearance of a conservation area or which provide a setting for Camden's architectural heritage</li> </ol> <p><b>Listed Buildings</b> Listed buildings are designated heritage assets and this section should be read in conjunction with the section above headed 'designated heritage assets'. To preserve or enhance the borough's listed buildings, the Council will:</p> <ol style="list-style-type: none"> <li>resist the total or substantial demolition of a listed building;</li> <li>resist proposals for a change of use or alterations and extensions to a listed building where this would cause harm to the special architectural and historic interest of the building; and</li> <li>resist development that would cause harm to significance of a listed building through an effect on its setting.</li> </ol> <p><b>Archaeology</b> The Council will protect remains of archaeological importance by ensuring acceptable measures are taken proportionate to the significance of the heritage asset to preserve them and their setting, including physical preservation, where appropriate.</p> <p><b>Other heritage assets and non-designated heritage assets</b></p>



<b>Camden Local Plan (Adopted July 2017)</b>		
<b>Policy ref.</b>	<b>Title</b>	<b>Scope</b>
		The Council will seek to protect other heritage assets including non-designated heritage assets (including those on and off the local list), Registered Parks and Gardens and London Squares. The effect of a proposal on the significance of a non-designated heritage asset will be weighed against the public benefits of the proposal, balancing the scale of any harm or loss and the significance of the heritage asset.



### Appendix 3: Gazetteer

Mon ID	Name	Period	Easting	Northing
114807	King's Cross Station (Roman Building)	Romano-British	530069	183345
110783	Tottenham Court Road (Roman Road)	Romano-British	529502	182400
107117	Caledonian Road (Roman Tombstone)	Romano-British	530507	183305
98683	Maiden Lane (Roman Tombstone)	Romano-British	530252	184225
97449	Pancras Road Near St Pancras Old Church (Roman Findspot)	Romano-British	529807	183455
109836	Kings Cross (Roman Findspot)	Romano-British	530507	183305
125936	York Way (Roman Findspot)	Romano-British	530307	183305
99696	Kings Cross (Roman Battlefield)	Romano-British	530407	183505
137406	Pancras Road (Early Medieval Altar)	Anglo-Saxon	529807	183455
148829	Pancras Road (Early Medieval Church)	Anglo-Saxon	529807	183455
143035	Pancras Road (Early Medieval Village)	Anglo-Saxon	529827	183485
115111	St Pancras Gardens (Pre-Conquest Churchyard)	Anglo-Saxon	529853	183431
126332	Camden High Street (Medieval Village)	Medieval	529007	184005
140171	Kentish Town (Medieval Village)	Medieval	528957	184285
136205	Kings Cross (Medieval Village)	Medieval	530552	183650
139467	Highgate Hill (Medieval Road)	Medieval	528527	185650
143859	St Pancras Way (Medieval Road)	Medieval	529752	183450
122047	Crowndale Road (Medieval Road)	Medieval	529407	183440
139805	Baynes Street (Medieval Hearth)	Medieval	529387	184125
143889	Pancras Road (Medieval Enclosure)	Medieval	529827	183485
99955	Kentish Town Road (Medieval Public House)	Medieval	529007	184525
148512	Camden High Street (No.141) London Borough of Camden NW17JR (Medieval Well)	Medieval	528955	183728
115578	Erskine Road (Medieval Manor House)	Medieval	529017	184905
121550	Pancras Road (Medieval Enclosure)	Medieval	529807	183265
129814	Platt Street (Medieval Watercourse)	Medieval	529707	183305
146147	Kentish Town Road (Medieval Pound)	Medieval	529017	184905
108847	Wolsey Terrace (Medieval Moat & Ditch)	Medieval	529017	184905
138255	Wolsey Terrace (Medieval Drawbridge)	Medieval	529017	184905
143276	Wolsey Terrace (Medieval Toll House)	Medieval	529017	184905
118616	Wolsey Terrace (Medieval Farmhouse & Moat)	Medieval	529017	184905
109334	Castle Road (Medieval Public House)	Medieval	528927	184575
96995	St Pancras Gardens (Medieval Churchyard)	Medieval	529755	183489
104585	1 Camley Street (Late Medieval Findspot)	Medieval	530072	183380
140931	122 Albert Street (Post Medieval Terraced House)	Post-medieval	528814	183595
116050	120 Albert Street (Post Medieval Terraced House)	Post-medieval	528817	183690
97423	Baynes Street (Post Medieval Basement & Wall)	Post-medieval	529387	184125
124202	Arlington Road (Post Medieval Layer)	Post-medieval	528737	183855
144709	Albion Works (Tudor Buried Soil Horizon)	Post-medieval	530452	183350
101129	York Way (Post Medieval Waste Disposal Site)	Post-medieval	530407	183215
137992	St Pancras Terminus & Kings Cross Lands (Tudor Inhumation, Gravestone & Human Remains)	Post-medieval	530007	183505
117747	Arlington Road (Post Medieval Terraced House)	Post-medieval	528737	183855
125143	St Pancras Term Inus (Post Medieval Waste Disposal Site, Railway & Canal)	Post-medieval	530007	183505
131640	Kings Cross (Post Medieval Pit)	Post-medieval	530407	183215
132494	Albion Works, York Way, Kings Cross (Post Medieval Culvert & Pit)	Post-medieval	530452	183350
145322	Market Road (Post Medieval Public House)	Post-medieval	530129	184641
106964	North Road (Post Medieval Flats)	Post-medieval	530094	184925
98294	North Road (Post Medieval Flats)	Post-medieval	530192	184972
149030	Clock Tower Place (Post Medieval House)	Post-medieval	530207	184805
150203	265 Camden Road (Post Medieval House)	Post-medieval	529957	185232
117332	Elm Village (Post Medieval Findspot)	Post-medieval	529507	184005
115255	Grand Union Canal (Post Medieval Canal)	Post-medieval	531218	183391
136354	Kings Cross Goods Yard (Post Medieval Office)	Post-medieval	530250	183578
129585	Stables Market (Post Medieval Structure & Structure)	Post-medieval	528657	184185



Mon ID	Name	Period	Easting	Northing
138641	Crown Place Mews (Post Medieval Demolition Debris, Rubbish Pit & Quarry)	Post-medieval	528967	184955
104376	Albion Works (Post Medieval Pit & Culvert)	Post-medieval	530452	183350
140962	Albion Works (Restoration Waste Disposal Site)	Post-medieval	530452	183350
132226	P&O Landholdings (Georgian Friends Meeting House)	Post-medieval	530452	183350
101314	West Side Of Camley Street (Restoration Boundary Wall)	Post-medieval	529928	183428
119960	Market Road (Post Medieval Livestock Market)	Post-medieval	530242	184822
111279	King's Cross Station (Post Medieval Structure)	Post-medieval	530068	183338
122931	Cheney Road And Corners Of Wellers Court And Battlebridge Road (Restoration Cellar)	Post-medieval	530130	183189
110071	South of the German Gymnasium (Georgian Wall)	Post-medieval	530129	183100
98176	Old St. Pancras Workhouse (Georgian Workhouse)	Post-medieval	529035	184026
128210	St Pancras Terminus & Kings Cross Lands (Georgian Structure)	19th century	530002	183500
109972	34b York Way (Georgian Lead Works & Artificial Dye Works)	19th century	530357	183175
144461	St Pancras Terminus & Kings Cross Lands (Victorian Market)	19th century	530002	183500
131237	36-40 York Way (Victorian Industrial Building)	19th century	530452	183350
108323	St Pancras Terminus & Kings Cross Lands (Victorian Revetment, Railway Embankment & Viaduct)	19th century	530002	183500
151611	St Pancras Terminus & Kings Cross Lands (Victorian Structure, Floor, Drain & Railway Turntable)	19th century	530002	183500
97904	Albion Works (Victorian Copper Works & Brass Foundry)	19th century	530452	183350
125620	St Pancras Terminus & Kings Cross Lands (Victorian Structure & Basement)	19th century	530002	183500
102758	34 York Way (Victorian Factory)	19th century	530357	183175
126397	10 All Saints Street (Victorian Warehouse)	19th century	530565	183468
98672	Albion Works (Victorian Industrial Site)	19th century	530452	183350
121501	Top of Ramp 96 (Georgian Boundary Wall)	19th century	529843	183405
102455	Camden, (Victorian Tramway)	19th century	529489	183655
97493	38-40 Phoenix Road (Georgian Terraced House)	19th century	529688	182969
95767	Opposite Stanley Buildings (Georgian Building)	19th century	530099	183204
95309	The Granary Complex (Georgian Canal Tunnel)	19th century	530093	183525
121805	South of the German Gymnasium (Georgian Wall)	19th century	530158	183159
124247	Adjacent to Midland Shed (Georgian Structure)	19th century	530316	183609
119871	Corner Of Cheney Road And Battlebridge Road (Georgian Tenement Block)	19th century	530085	183228
99961	Cheney Road (Georgian Cess Pit)	19th century	530100	183218
150065	The Granary Complex (Georgian Canal Basin)	19th century	530124	183489
97825	Cheney Road (Georgian Structure)	19th century	530146	183140
102470	East Of Camley Street (Georgian Drain & Culvert)	19th century	530008	183362
123578	Area Near Cedar Way (Georgian Wall)	19th century	529720	184098
118404	Corner Of Battlebridge Road And Cheney Road (Georgian Cellar)	19th century	530086	183219
124818	1 Camley Street (Georgian Structure)	19th century	530072	183380
130294	South Side Of Battlebridge Road (Georgian Warehouse)	19th century	530060	183220
129165	Adjacent to Midland Shed (Georgian House)	19th century	530309	183555
135321	Undercroft Of St Pancras Station (Georgian House)	19th century	530092	183063
135501	King's Cross Lands (Georgian Wall)	19th century	530021	183223
95231	Gray's Inn Bridge (Georgian Bridge)	19th century	529388	184022
146597	Kentish Town Lock (Georgian Canal Lock)	19th century	528918	184151
150145	Hawley Lock (Georgian Canal Lock)	19th century	528810	184158
116930	Kentish Town Bridge (Georgian Bridge)	19th century	528945	184136
128019	College Street Bridge (Georgian Bridge)	19th century	529262	184077
134212	Camden Bridge (Georgian Bridge)	19th century	529072	184098
111810	Brill Place (Georgian Power Station)	19th century	529842	183033
132520	The Granary Complex (Georgian Layer)	19th century	530116	183543
145555	Pancras Road (Georgian Culvert)	19th century	530120	183091
123413	Brill Place (Georgian Drain & Culvert)	19th century	529943	183104
147436	Amthill Estate (Georgian Garden)	19th century	529234	183106



Mon ID	Name	Period	Easting	Northing
122275	Rochester Square (Georgian Railings, Wall & Nursery)	19th century	529430	184346
109235	King's Cross Lands (Georgian Sewer)	19th century	530122	183867
150859	Shared Service yard (Georgian Wall)	19th century	530212	183231
109596	Leighton Crescent Playground (Georgian Garden)	19th century	529442	185313
147429	St Martin's Gardens (Georgian Cemetery)	19th century	529142	183845
123027	St Pancras Gardens (Georgian Cemetery)	19th century	529740	183504
129704	St. Pancras Workhouse (Georgian Infirmary)	19th century	529682	183613
106975	Regent's Canal (Georgian Canal)	19th century	530177	183452
111716	Lock-Keeper's Cottage (Georgian Lock Keepers Cottage)	19th century	528797	184173
118222	Camden Square Gardens (Georgian Garden)	19th century	529653	184554
146406	Camden Gardens (Georgian Garden)	19th century	528977	184211
126740	210 Kentish Town Road (Georgian Layer)	19th century	529014	184900
103419	Camley Street Natural Park (Victorian Coal Depot)	19th century	529979	183453
97578	Wharf Road (Victorian Drain)	19th century	530313	183547
137452	Cheney Road (Victorian Building)	19th century	530164	183151
145066	Cheney Road (Victorian Drain)	19th century	530162	183183
113368	Milk Dock (Victorian Underground Railway Tunnel)	19th century	530171	183158
109281	Goodsway (Victorian Boundary Wall)	19th century	530097	183389
132768	Southwest Corner Of Area27 (Victorian Building)	19th century	530034	183341
97439	39-43 Wharfdale Road (Victorian Terrace)	19th century	530409	183286
150313	North Side (Victorian Structure)	19th century	530054	183241
134268	East Side Of Pancras Road (Victorian Cellar)	19th century	530135	183086
151336	Wharf Road (Victorian Railway Carriage Works)	19th century	529879	183863
96888	Chalk Farm Road (Victorian Goods Yard)	19th century	528368	184170
129533	Harrington Square Gardens (Victorian Garden)	19th century	529196	183209
140619	Oakley Square Gardens (Victorian Park)	19th century	529373	183340
116328	Rochester Terrace Gardens (Victorian Garden)	19th century	529163	184529
106044	Camden Lock Village (Victorian Railway Siding)	19th century	528805	184189
125310	Kings Cross Central (Victorian Goods Yard)	19th century	530033	183937
108501	Ice Wharf (Victorian Warehouse)	19th century	530471	183443
96818	Goods Way (Victorian Office)	19th century	530060	183441
124249	Goldington Crescent Gardens (Victorian Garden)	19th century	529624	183464
145686	King's Cross Station (Victorian Railway Station)	19th century	530266	183138
124594	Kings Cross Central (Victorian Goods Yard)	19th century	530142	183584
101353	Midland Road In The North To Euston Road In The South (Victorian Layer)	19th century	529942	182962
112334	Contract 103 Car Park (Victorian Gate)	19th century	530306	183673
100218	The Granary (Victorian Granary)	19th century	530139	183538
110173	York Way (Victorian Fruit And Vegetable Market)	19th century	530272	183693
140295	Edward Square (Victorian Public Square)	19th century	530645	183593
147649	Undercroft Of St Pancras Station (Victorian Floor)	19th century	530111	183042
122093	St Pancras Gardens (Victorian Pavement)	19th century	529846	183470
107796	North Side Of Camley Street Bridge/Underpass (Victorian Railway Bridge & Embankment)	19th century	529841	183553
137959	West Side Of Goodsway (Victorian Gas Holder)	19th century	529968	183323
111989	Western side, north of gasometers (Victorian Railway Embankment)	19th century	529922	183413
104779	Stanley Buildings (Victorian Model Dwelling)	19th century	530087	183193
99937	St Pancras Station Northern Extension (Victorian Housing Estate)	19th century	530085	183175
134529	Stanley Buildings, Flats Numbers 21-30 (Victorian Model Dwelling)	19th century	530105	183182
98691	Market Road Gardens (Victorian Public Park)	19th century	530465	184713
133705	Golden Lion Public House (Victorian Public House)	19th century	529381	183895
151266	St Pancras Station Extension (Victorian Water Point)	19th century	530006	183169
135116	Ossulston Street (Eastern Side) (Victorian Goods Shed)	19th century	529962	182896
121371	South Side Of Brill Place (Victorian Coal Depot & Goods Shed)	19th century	529867	183087
139435	Euston Road (Victorian Goods Shed)	19th century	529880	183042
143377	Brill Place To Euston Road (Victorian Arch Bridge)	19th century	529945	183018



Mon ID	Name	Period	Easting	Northing
120371	Midland Road And Brill Place Junction (Victorian Railway Siding)	19th century	529964	183123
119697	College Gardens (Victorian Garden)	19th century	529099	184384
118454	Goodsway (Victorian Gas Holder)	19th century	530101	183321
150511	Former Camden Snooker Club (Victorian Public Hall)	19th century	528952	183648
133584	Chenies Place To Brill Place (Victorian Coal Depot)	19th century	529850	183221
99486	Market Road (Gardens) (Victorian Childrens Playground)	19th century	530213	184604
108685	Kentish Town Lock Pumping Station (Victorian Pumping Station)	19th century	528934	184162
125683	York Way (Victorian Warehouse)	19th century	530011	183640
147722	Camden Theatre Camden High Street (Victorian Theatre)	Modern	529240	183414
113982	44, St Paul's Crescent, Chalk Farm - In An Area of Industrial Units Converted From Stables. (Second World War Pillbox)	Modern	529002	184000
113413	34b York Way (Mid-20th Century Factory)	Modern	530357	183175
120034	Kentish Town Underground Station (Edwardian Underground Railway Station)	Modern	529033	185132
137666	Buck Street And Stanmore Place (Mid-20th Century Metal Framed Building)	Modern	528905	183914
144161	72 Camden Road (Early 20th Century Psychiatric Hospital)	Modern	529133	184045
132680	The Crown and Goose Public House (Early 20th Century Public House)	Modern	528939	183641
99770	17-29 Hawley Crescent (Early 20th Century Factory)	Modern	528836	184124
142299	Buck Street And Stanmore Place (Second World War Air Raid Shelter)	Modern	528878	183998
105106	British Library Centre for Conservation (21st Century Library and Office)	Modern	529955	182979
117135	Somers Town (Stream of Uncertain Date)	Undated	529607	183205
124013	Brecknock Road (Middle Palaeolithic Findspot)	Undated	529530	184628



Wessex Archaeology Ltd registered office Portway House, Old Sarum Park, Salisbury, Wiltshire SP4 6EB  
Tel: 01722 326867 Fax: 01722 337562 info@wessexarch.co.uk www.wessexarch.co.uk



## Appendix B: Phase 1 Desk Study





**120–136 Camley Street  
and 3–30 Cedar Way  
London  
N1C 4PG**

Desk Study  
Report



May 2023

J23105  
Rev 0

