

**69a Regent's Park Road, London NW1 8UY**  
**Planning submission, 2025/0429 Lawful Development Certificate: existing use**

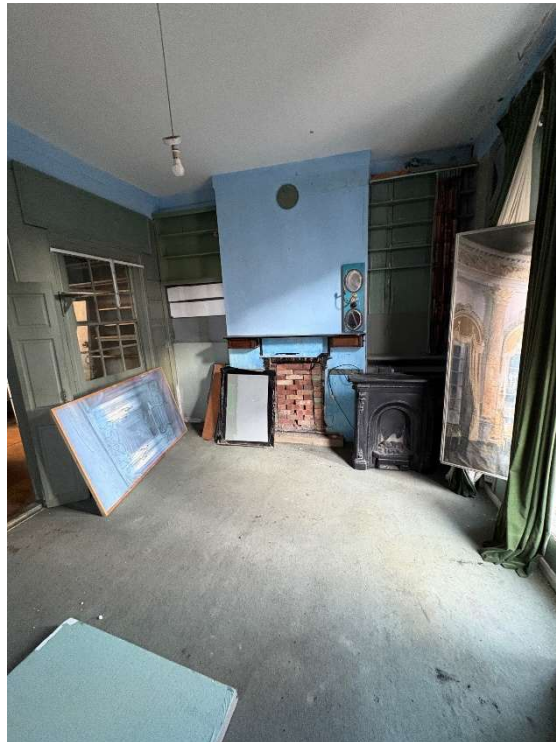
**6<sup>th</sup> February 2025**



**1<sup>st</sup> floor rear art studio**



**1<sup>st</sup> floor kitchen**



**1<sup>st</sup> floor living room**

**69a Regent's Park Road, London NW1 8UY**  
**Planning submission, 2025/0429 Lawful Development Certificate: existing use**

**6<sup>th</sup> February 2025**



2<sup>nd</sup> floor bathroom



2<sup>nd</sup> floor bedroom