

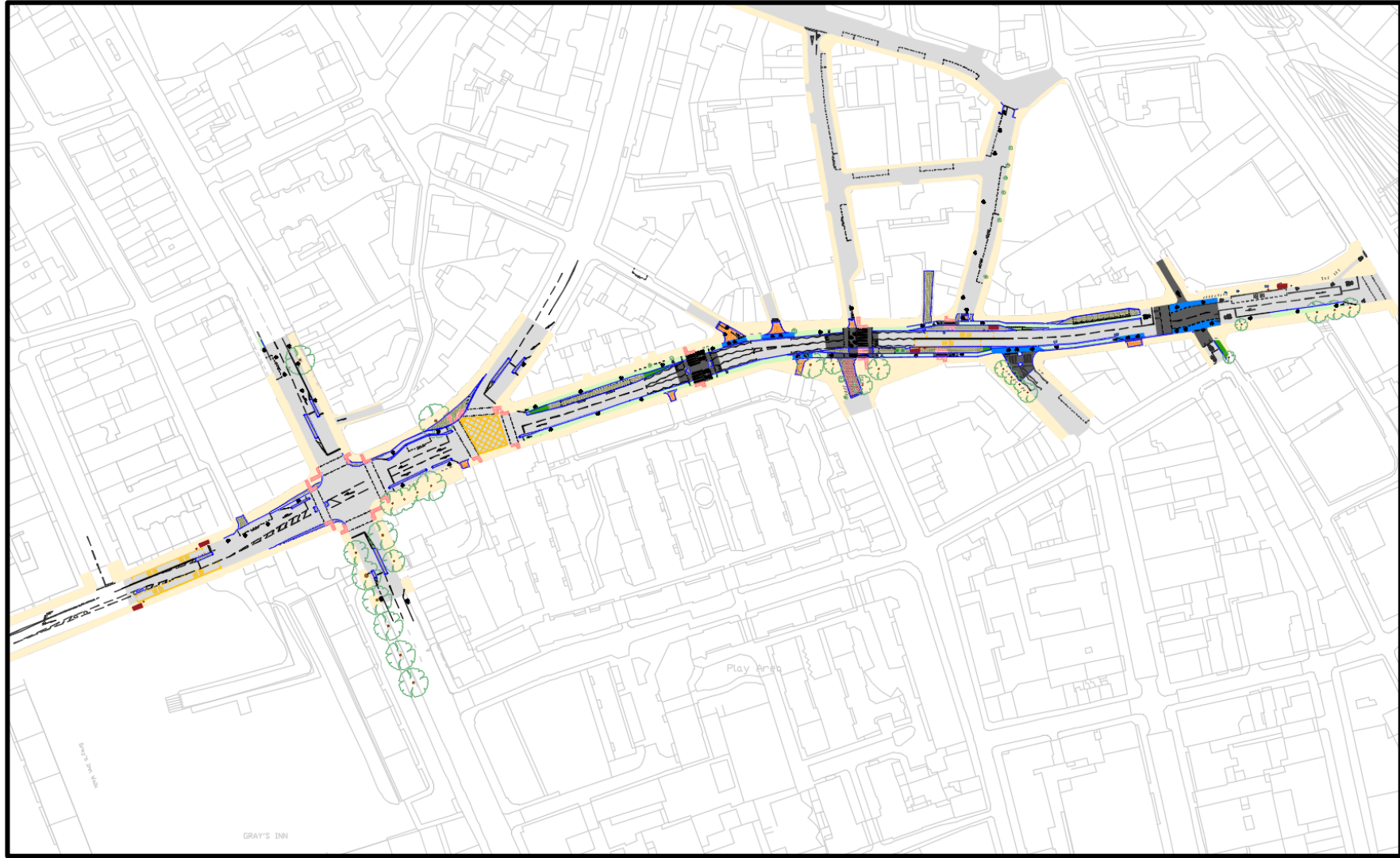
# Clerkenwell Road Safe and Healthy Streets



# Context

- Clerkenwell Road Safe and Healthy Streets scheme will introduce protected cycle facilities on one of the busiest east west corridors in London
- Will transform the area from traffic dominated area to a safer, more accessible location for pedestrians and cyclists
- As part of the wider project area, we have recently closed the top of Leather Lane at the junction of Clerkenwell Road to improve safety of pedestrians
- The project also aims to declutter footways and create new public spaces around Leather Lane and Hatton Garden Diamond District

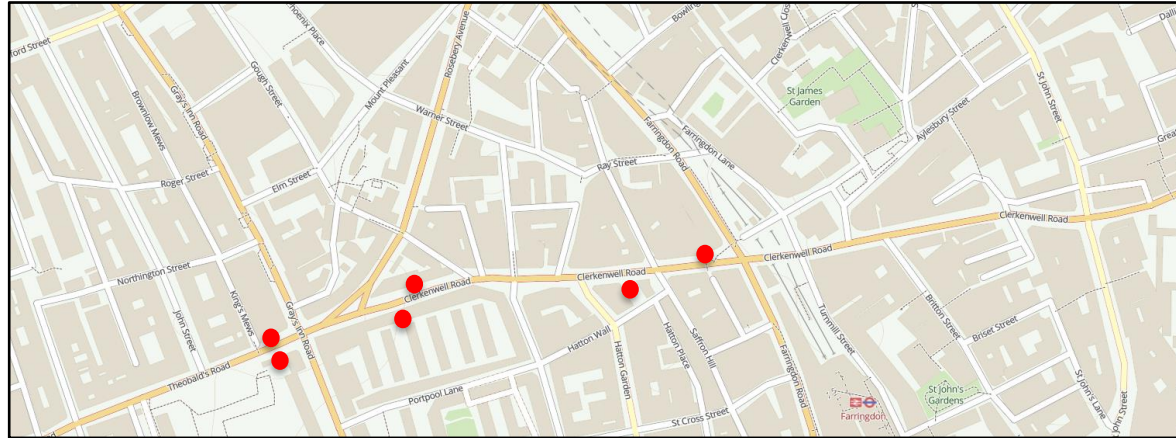
# Proposal – Clerkenwell Road



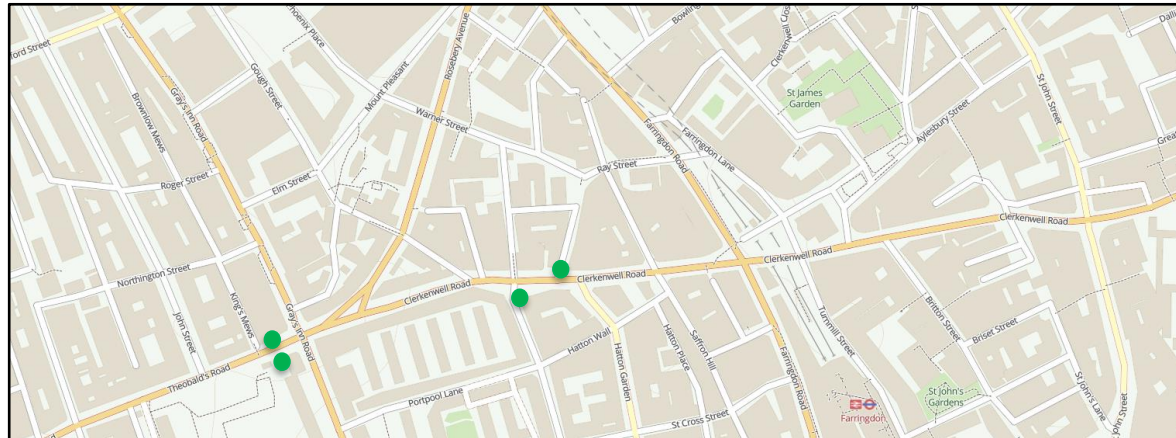


# Bus Stop Consolidation

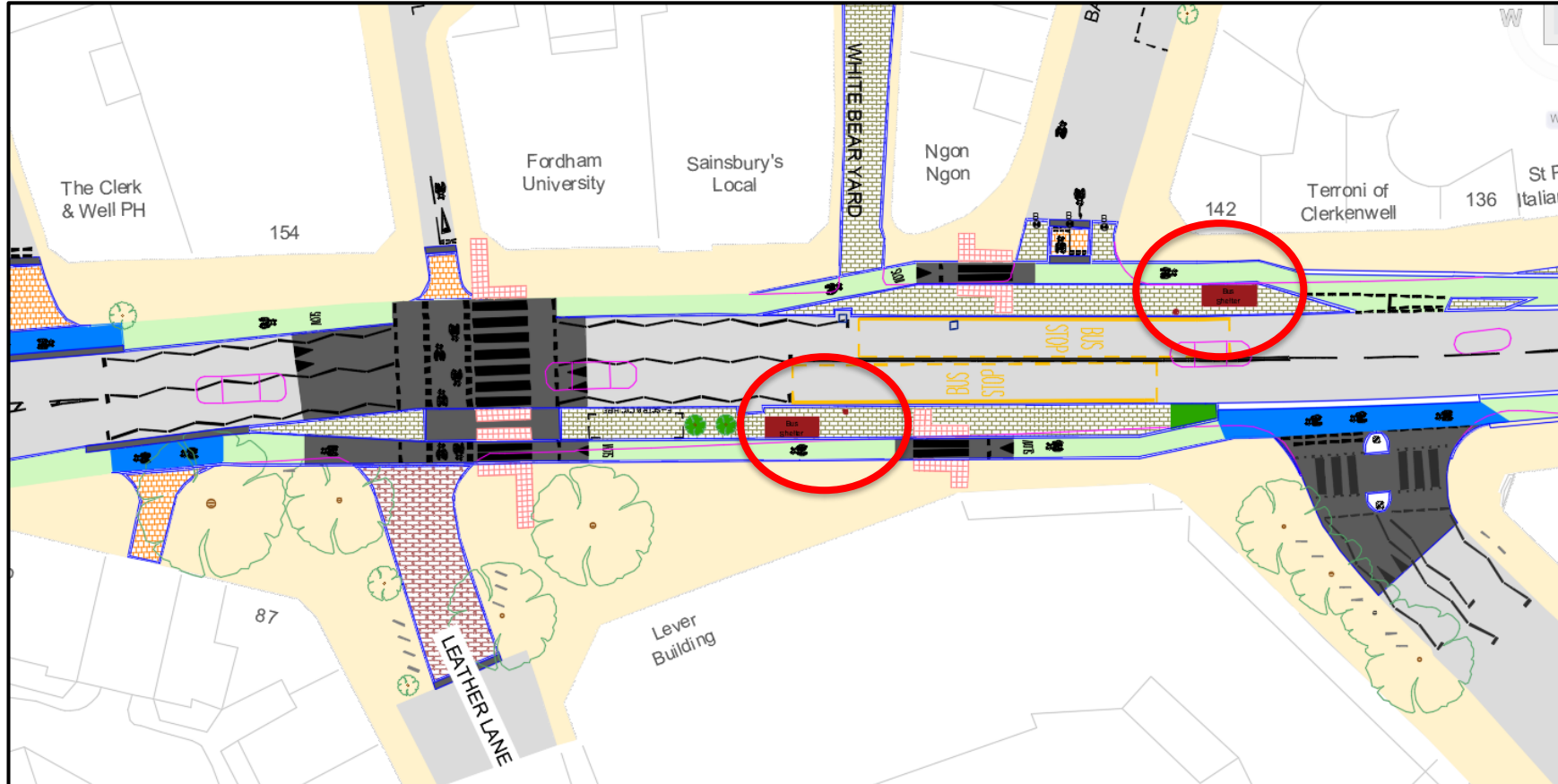
Existing



Proposed



# Proposal – Clerkenwell Road



# Proposal – Clerkenwell Road



# Proposal – Clerkenwell Road

- The scheme is reliant on the consolidation of the 4 existing bus stop, to 2 at the top of Leather Lane, creating less street clutter and simpler facilities for bus passengers
- Proposed bus stop locations would improve access to Leather Lane Market, local businesses and walking routes to the city
- The scheme also allows us to relocate the dockless bike hire bay from footway to new traffic island for decluttering, replaced with benches / public realm improvements on Clerkenwell Road by Leather Lane



# Progress to Date

- The wider scheme included the removal of toilet blocks which opens the space up for removing the remaining clutter

