

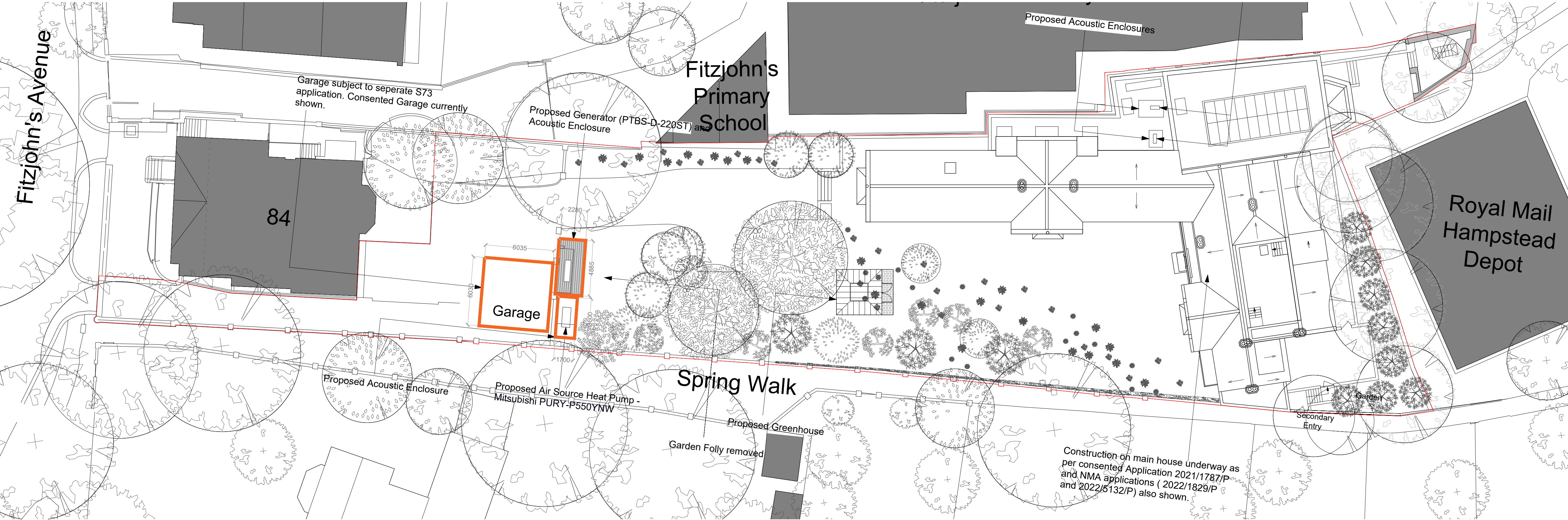
A-046-008 GENERAL ARRANGEMENT COMPARISON PLAN: PROPOSED
01 1:200@A1

LANDSCAPING KEY

- SURFACE FINISHES**
- P1a** SURFACE TYPE P1a
High quality clay brick paving
NB: Sand swept joints, laid herringbone with stack bond break-up. Colour: red, to match local venacular
 - P1b** SURFACE TYPE P1b
High quality clay brick paving
NB: Sand swept joints, laid stack/stretcher bond, colour: red, to match local venacular
 - P1c** SURFACE TYPE P1c
High quality clay brick paving
NB: Sand & soil swept joints, laid stack/stretcher bond, colour: red, to match local venacular
 - P2** SURFACE TYPE P2
High quality reclaimed Yorkstone pavers
NB: 600/700x600/700mm
 - P4** SURFACE TYPE P4
High quality cobblestone.
Specification tbc.
- WALL FINISHES**
- W1a** WALL TYPE W1a
Existing boundary wall to be deconstructed and rebuilt as existing
 - W1b** WALL TYPE W1b
Existing boundary fence to be replaced with reclaimed brick wall to match existing Spring Walk wall
 - W2** WALL TYPE W2
High quality natural stone. Cotswold or similar, to clad retaining wall. Specification tbc.
 - W3** WALL TYPE W3
Reclaimed brick wall. Specification tbc.
 - W4** WALL TYPE W4
New brick wall. Specification tbc.

CHANGES PLAN KEY

- Previously approved plan by Jinny Blom
- Ownership Boundary
- Application Boundary
- GARAGE & PLANT ROOM



A-046-008 GENERAL ARRANGEMENT COMPARISON PLAN: APPROVED PROPOSAL
02 1:200@A1

28/11/24	0	Issue for Planning
Date	Rev:	Revision details
Client JLCC		
Project 82 Fitzjohn's Avenue, London, NW3 6NP		
Sketch Drawing Comparison Plan: Garage & Plant Room		
Reference LA-046-008		Rev 0
Scale 1:200-@-A1		Date 28/11/24
<div></div> <div>LUCY ATTWOOD INTERIOR ARCHITECTURE + DESIGN</div>		
<div>1. Refer to Scale Bar & Title Block for drawn Scale.</div> <div>2. Do not scale, use figured dimensions only.</div> <div>3. Check all dimensions on site before work is commenced.</div> <div>4. All goods, materials and workmanship to conform with current building, fire and safety regulations. All specified products installed to manufactures' specifications.</div> <div>5. Conceptual drawings for interior design purposes.</div> <div>6. Specifications for all planting and trees to be confirmed by landscaping consultant.</div> <div>7. Base plans provided by JLCC.</div> <div>8. Lighting plans to be confirmed by lighting consultant.</div>		