

<b>Sources:</b> Z MAPPING Survey Info (received 12/12/14) Finchley Road_121214_Mesh.dwg  PLOWMAN CRAVEN Survey Model (received 11/02/19) 40070RoLM-01A.dwg  ALLFORD HALL MONAGHAN MORRIS Proposed Scheme Model (received 28/10/2021) 19066_3D_OPTION 59_MASSING_R02.DWG		<b>Key:</b>  		<b>Project:</b> O2 Centre Finchley Road, London		<b>Title:</b> Window Locations 17-27 Canfield Place	
<b>Scheme Confirmed:</b> -	<b>Date:</b> -	<b>Drawn By:</b> NI	<b>Scale:</b> NA @A3	<b>Date:</b> Nov 2021	<b>Dwg No:</b> <b>P393/WM/20</b>	<b>Rel:</b> <b>29</b>	



Sources: Z MAPPING  
 Survey Info (received 12/12/14)  
 Finchley Road\_121214\_Mesh.dwg

PLOWMAN CRAVEN  
 Survey Model (received 11/02/19)  
 40070RoLM-01A.dwg

ALLFORD HALL MONAGHAN MORRIS  
 Proposed Scheme Model (received 28/10/2021)  
 19066\_3D\_OPTION 59\_MASSING\_R02.DWG

Key:

Project: O2 Centre  
 Finchley Road, London

Title: Window Locations  
 66-73 Lithos Road

Scheme Confirmed: -

Date: -

Drawn By: NI

Scale: NA @A3

Date: Nov 2021

Dwg No: P393/WM/21

Rel: 29





Sources: Z MAPPING  
 Survey Info (received 12/12/14)  
 Finchley Road\_121214\_Mesh.dwg

PLOWMAN CRAVEN  
 Survey Model (received 11/02/19)  
 40070RoLM-01A.dwg

ALLFORD HALL MONAGHAN MORRIS  
 Proposed Scheme Model (received 28/10/2021)  
 19066\_3D\_OPTION 59\_MASSING\_R02.DWG

Key:

Project: O2 Centre  
 Finchley Road, London

Title: Window Locations  
 58-67 Lithos Road

Scheme Confirmed: -

Date: -

Drawn By: NI

Scale: NA @A3

Date: Nov 2021

Dwg No: P393/WM/22

Rel: 29





Sources: Z MAPPING  
 Survey Info (received 12/12/14)  
 Finchley Road\_121214\_Mesh.dwg

PLOWMAN CRAVEN  
 Survey Model (received 11/02/19)  
 40070RoLM-01A.dwg

ALLFORD HALL MONAGHAN MORRIS  
 Proposed Scheme Model (received 28/10/2021)  
 19066\_3D\_OPTION 59\_MASSING\_R02.DWG

Key:

Project: O2 Centre  
 Finchley Road, London

Title: Window Locations  
 54-61 Lithos Road

Scheme Confirmed: -

Date: -

Drawn By: NI

Scale: NA @A3

Date: Nov 2021

Dwg No: P393/WM/23

Rel: 29





Sources: Z MAPPING  
 Survey Info (received 12/12/14)  
 Finchley Road\_121214\_Mesh.dwg

PLOWMAN CRAVEN  
 Survey Model (received 11/02/19)  
 40070RoLM-01A.dwg

ALLFORD HALL MONAGHAN MORRIS  
 Proposed Scheme Model (received 28/10/2021)  
 19066\_3D\_OPTION 59\_MASSING\_R02.DWG

Key:

Project: O2 Centre  
 Finchley Road, London

Title: Window Locations  
 40-54 Rosemont Road

Scheme Confirmed: -

Date: -

Drawn By: NI

Scale: NA @A3

Date: Nov 2021

Dwg No: P393/WM/24

Rel: 29





Sources: Z MAPPING  
 Survey Info (received 12/12/14)  
 Finchley Road\_121214\_Mesh.dwg

PLOWMAN CRAVEN  
 Survey Model (received 11/02/19)  
 40070RoLM-01A.dwg

ALLFORD HALL MONAGHAN MORRIS  
 Proposed Scheme Model (received 28/10/2021)  
 19066\_3D\_OPTION 59\_MASSING\_R02.DWG

Key:

Project: O2 Centre  
 Finchley Road, London

Title: Window Locations  
 30-40 Rosemont Road

Scheme Confirmed:  
 -

Date:  
 -

Drawn By:  
 NI

Scale:  
 NA @A3

Date:  
 Nov 2021

Dwg No:  
**P393/WM/25**

Rel:  
**29**





Sources: Z MAPPING  
 Survey Info (received 12/12/14)  
 Finchley Road\_121214\_Mesh.dwg

PLOWMAN CRAVEN  
 Survey Model (received 11/02/19)  
 40070RoLM-01A.dwg

ALLFORD HALL MONAGHAN MORRIS  
 Proposed Scheme Model (received 28/10/2021)  
 19066\_3D\_OPTION 59\_MASSING\_R02.DWG

Key:

Project: O2 Centre  
 Finchley Road, London

Title: Window Locations  
 30 Rosemont Road

Scheme Confirmed: -

Date: -

Drawn By: NI

Scale: NA @A3

Date: Nov 2021

Dwg No: P393/WM/26

Rel: 29





Sources: Z MAPPING  
 Survey Info (received 12/12/14)  
 Finchley Road\_121214\_Mesh.dwg

PLOWMAN CRAVEN  
 Survey Model (received 11/02/19)  
 40070RoLM-01A.dwg

ALLFORD HALL MONAGHAN MORRIS  
 Proposed Scheme Model (received 28/10/2021)  
 19066\_3D\_OPTION 59\_MASSING\_R02.DWG

Key:

Project: O2 Centre  
 Finchley Road, London

Title: Window Locations  
 20-26 Rosemont Road

Scheme Confirmed: -

Date: -

Drawn By: NI

Scale: NA @A3

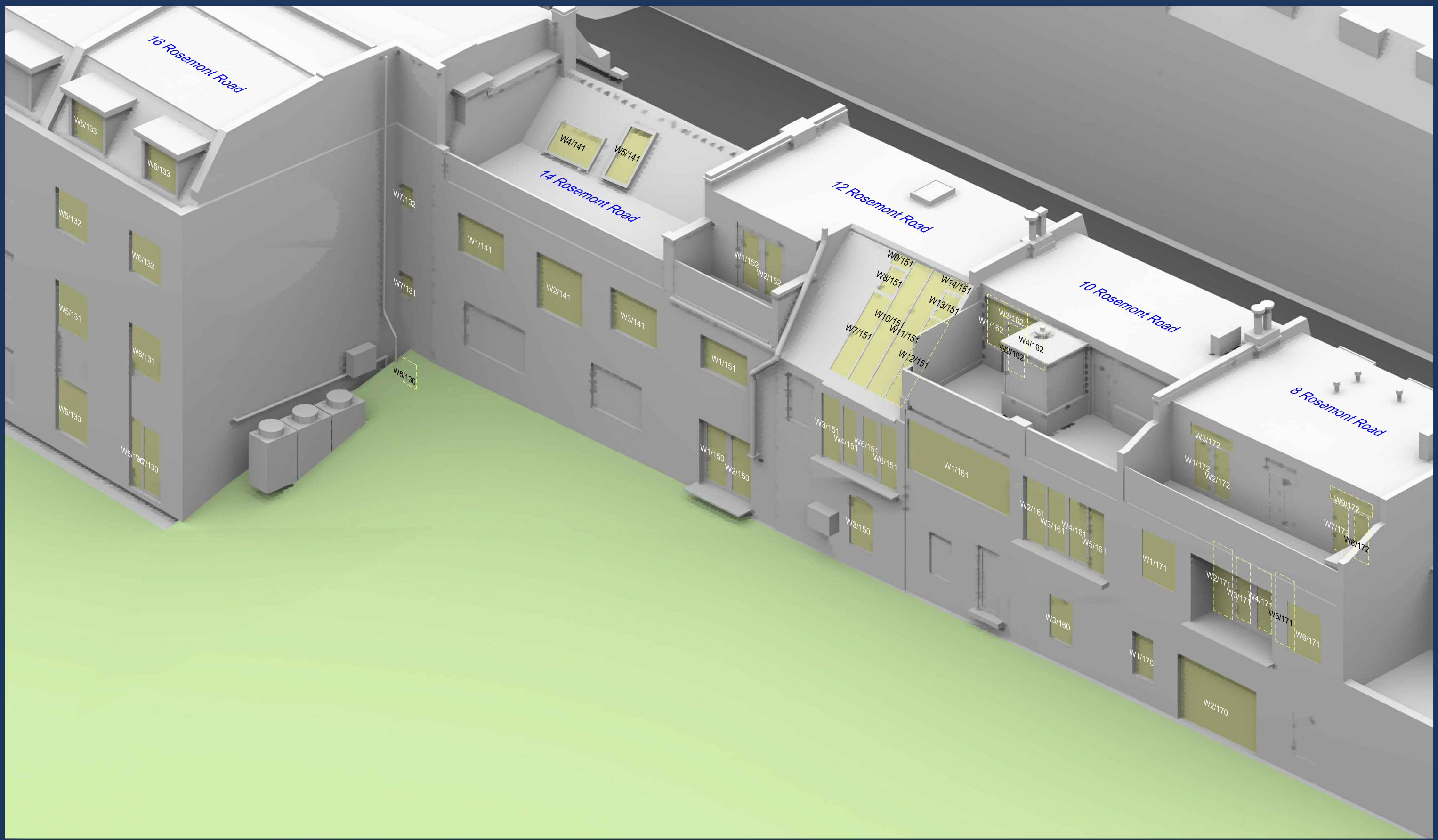
Date: Nov 2021

Dwg No: P393/WM/27

Rel: 29







Sources: Z MAPPING  
 Survey Info (received 12/12/14)  
 Finchley Road\_121214\_Mesh.dwg

PLOWMAN CRAVEN  
 Survey Model (received 11/02/19)  
 40070RoLM-01A.dwg

ALLFORD HALL MONAGHAN MORRIS  
 Proposed Scheme Model (received 28/10/2021)  
 19066\_3D\_OPTION 59\_MASSING\_R02.DWG

Key:

Project: O2 Centre  
 Finchley Road, London

Title: Window Locations  
 8-16 Rosemont Road

Scheme Confirmed: -

Date: -

Drawn By: NI

Scale: NA @A3

Date: Nov 2021

Dwg No: P393/WM/28

Rel: 29





Sources: Z MAPPING  
 Survey Info (received 12/12/14)  
 Finchley Road\_121214\_Mesh.dwg

PLOWMAN CRAVEN  
 Survey Model (received 11/02/19)  
 40070RoLM-01A.dwg

ALLFORD HALL MONAGHAN MORRIS  
 Proposed Scheme Model (received 28/10/2021)  
 19066\_3D\_OPTION 59\_MASSING\_R02.DWG

Key:

Project: O2 Centre  
 Finchley Road, London

Title: Window Locations  
 8-14 Rosemont Road

Scheme Confirmed: -

Date: -

Drawn By: NI

Scale: NA @A3

Date: Nov 2021

Dwg No: P393/WM/29

Rel: 29





Sources: Z MAPPING  
 Survey Info (received 12/12/14)  
 Finchley Road\_121214\_Mesh.dwg

PLOWMAN CRAVEN  
 Survey Model (received 11/02/19)  
 40070RoLM-01A.dwg

ALLFORD HALL MONAGHAN MORRIS  
 Proposed Scheme Model (received 28/10/2021)  
 19066\_3D\_OPTION 59\_MASSING\_R02.DWG

Key:

Project: O2 Centre  
 Finchley Road, London

Title: Window Locations  
 2-6 Rosemont Road

Scheme Confirmed: -

Date: -

Drawn By: NI

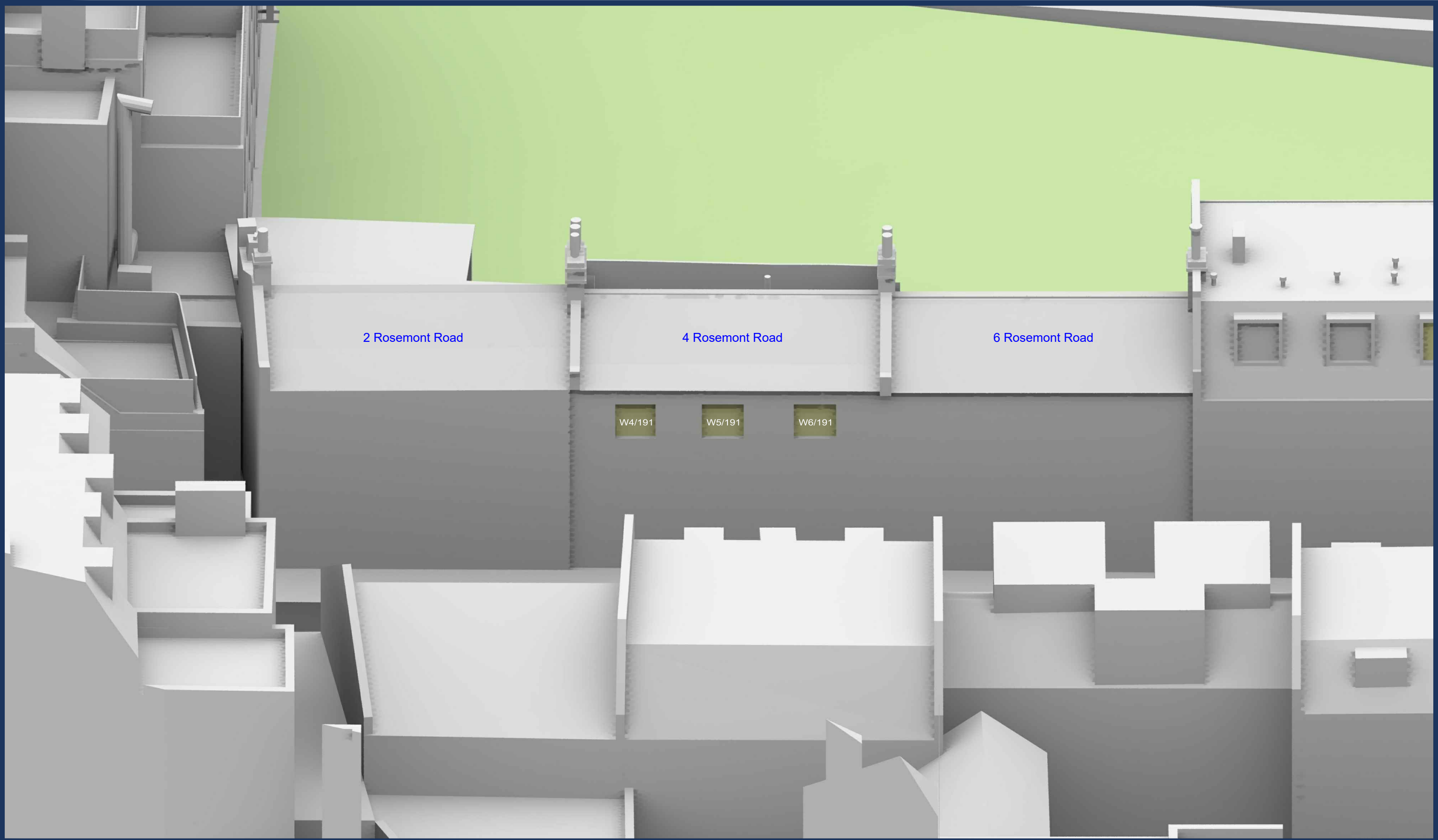
Scale: NA @A3

Date: Nov 2021

Dwg No: P393/WM/30

Rel: 29





Sources: Z MAPPING  
 Survey Info (received 12/12/14)  
 Finchley Road\_121214\_Mesh.dwg

PLOWMAN CRAVEN  
 Survey Model (received 11/02/19)  
 40070RoLM-01A.dwg

ALLFORD HALL MONAGHAN MORRIS  
 Proposed Scheme Model (received 28/10/2021)  
 19066\_3D\_OPTION 59\_MASSING\_R02.DWG

Key:

Project: O2 Centre  
 Finchley Road, London

Title: Window Locations  
 2-6 Rosemont Road

Scheme Confirmed: -

Date: -

Drawn By: NI

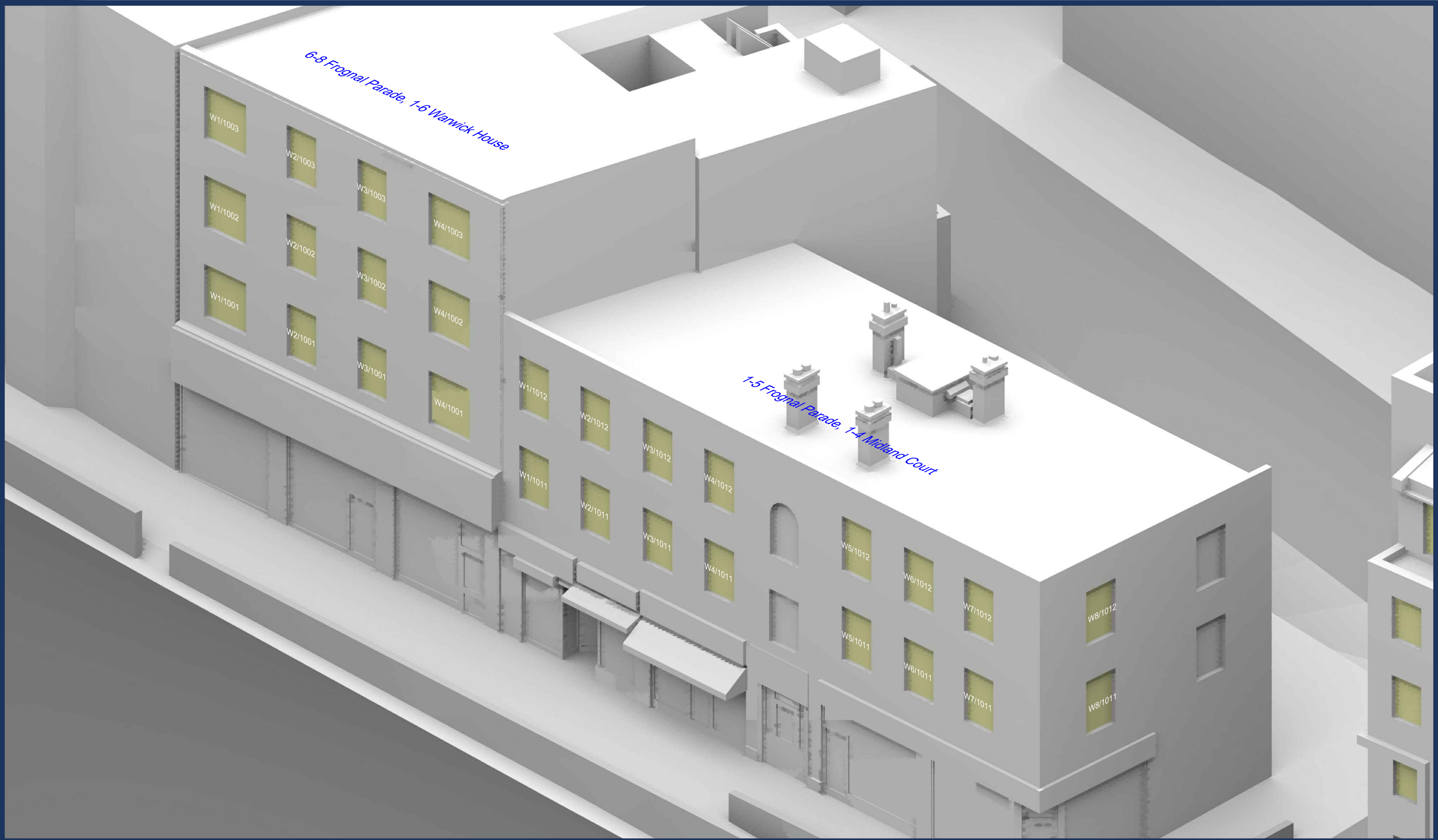
Scale: NA @A3

Date: Nov 2021

Dwg No: P393/WM/31

Rel: 29





Sources: Z MAPPING  
 Survey Info (received 12/12/14)  
 Finchley Road\_121214\_Mesh.dwg

PLOWMAN CRAVEN  
 Survey Model (received 11/02/19)  
 40070RoLM-01A.dwg

ALLFORD HALL MONAGHAN MORRIS  
 Proposed Scheme Model (received 28/10/2021)  
 19066\_3D\_OPTION 59\_MASSING\_R02.DWG

Key:

Project: O2 Centre  
 Finchley Road, London

Title: Window Locations  
 1-8 Frognal Parade  
 1-4 Midland Court  
 1-6 Warwick House

Scheme Confirmed: -

Date: -

Drawn By: NI

Scale: NA @A3

Date: Nov 2021

Dwg No: P393/WM/32

Rel: 29



Holiday Inn, 152-156 Finchley Road

W1/1026	W2/1026	W3/1026	W4/1026	W5/1026	W6/1026	W7/1026
W1/1025	W2/1025	W3/1025	W4/1025	W5/1025	W6/1025	W7/1025
W1/1024	W2/1024	W3/1024	W4/1024	W5/1024	W6/1024	W7/1024
W1/1023	W2/1023	W3/1023	W4/1023	W5/1023	W6/1023	W7/1023
W1/1022	W2/1022	W3/1022	W4/1022	W5/1022	W6/1022	W7/1022
W1/1021	W2/1021	W3/1021	W4/1021	W5/1021	W6/1021	W7/1021

Sources: Z MAPPING  
 Survey Info (received 12/12/14)  
 Finchley Road\_121214\_Mesh.dwg

PLOWMAN CRAVEN  
 Survey Model (received 11/02/19)  
 40070RoLM-01A.dwg

ALLFORD HALL MONAGHAN MORRIS  
 Proposed Scheme Model (received 28/10/2021)  
 19066\_3D\_OPTION 59\_MASSING\_R02.DWG

Key:

Project: O2 Centre  
 Finchley Road, London

Title: Window Locations  
 Holiday Inn, 152-156 Finchley Road

Scheme Confirmed:  
 -

Date:  
 -

Drawn By:  
 NI

Scale:  
 NA @A3

Date:  
 Nov 2021

Dwg No:  
**P393/WM/33**

Rel:  
**29**





Sources: Z MAPPING  
 Survey Info (received 12/12/14)  
 Finchley Road\_121214\_Mesh.dwg

PLOWMAN CRAVEN  
 Survey Model (received 11/02/19)  
 40070RoLM-01A.dwg

ALLFORD HALL MONAGHAN MORRIS  
 Proposed Scheme Model (received 28/10/2021)  
 19066\_3D\_OPTION 59\_MASSING\_R02.DWG

Key:

Project: O2 Centre  
 Finchley Road, London

Title: Window Locations  
 142-150 Finchley Road

Scheme Confirmed: -

Date: -

Drawn By: NI

Scale: NA @A3

Date: Nov 2021

Dwg No: P393/WM/34

Rel: 29





Sources: Z MAPPING  
 Survey Info (received 12/12/14)  
 Finchley Road\_121214\_Mesh.dwg

PLOWMAN CRAVEN  
 Survey Model (received 11/02/19)  
 40070RoLM-01A.dwg

ALLFORD HALL MONAGHAN MORRIS  
 Proposed Scheme Model (received 28/10/2021)  
 19066\_3D\_OPTION 59\_MASSING\_R02.DWG

Key:

Scheme Confirmed: -

Date: -

Project: O2 Centre  
 Finchley Road, London

Drawn By: NI

Scale: NA @A3

Date: Nov 2021

Title: Window Locations  
 132-140 Finchley Road

Dwg No: P393/WM/35

Rel: 29







Sources: Z MAPPING  
 Survey Info (received 12/12/14)  
 Finchley Road\_121214\_Mesh.dwg

PLOWMAN CRAVEN  
 Survey Model (received 11/02/19)  
 40070RoLM-01A.dwg

ALLFORD HALL MONAGHAN MORRIS  
 Proposed Scheme Model (received 28/10/2021)  
 19066\_3D\_OPTION 59\_MASSING\_R02.DWG

Key:

Project: O2 Centre  
 Finchley Road, London

Title: Window Locations  
 132 Finchley Road

Scheme Confirmed:  
 -

Date:  
 -

Drawn By:  
 NI

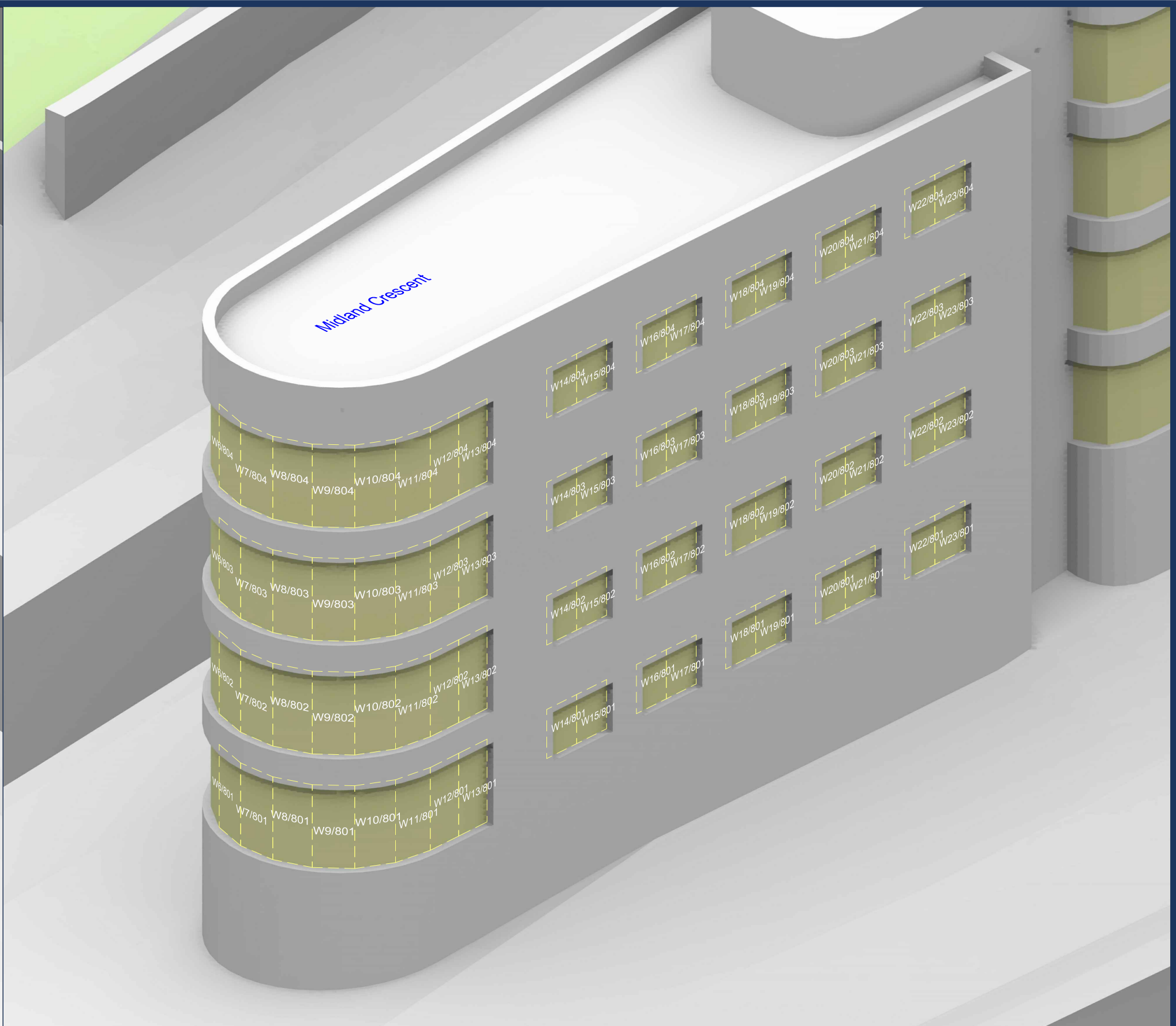
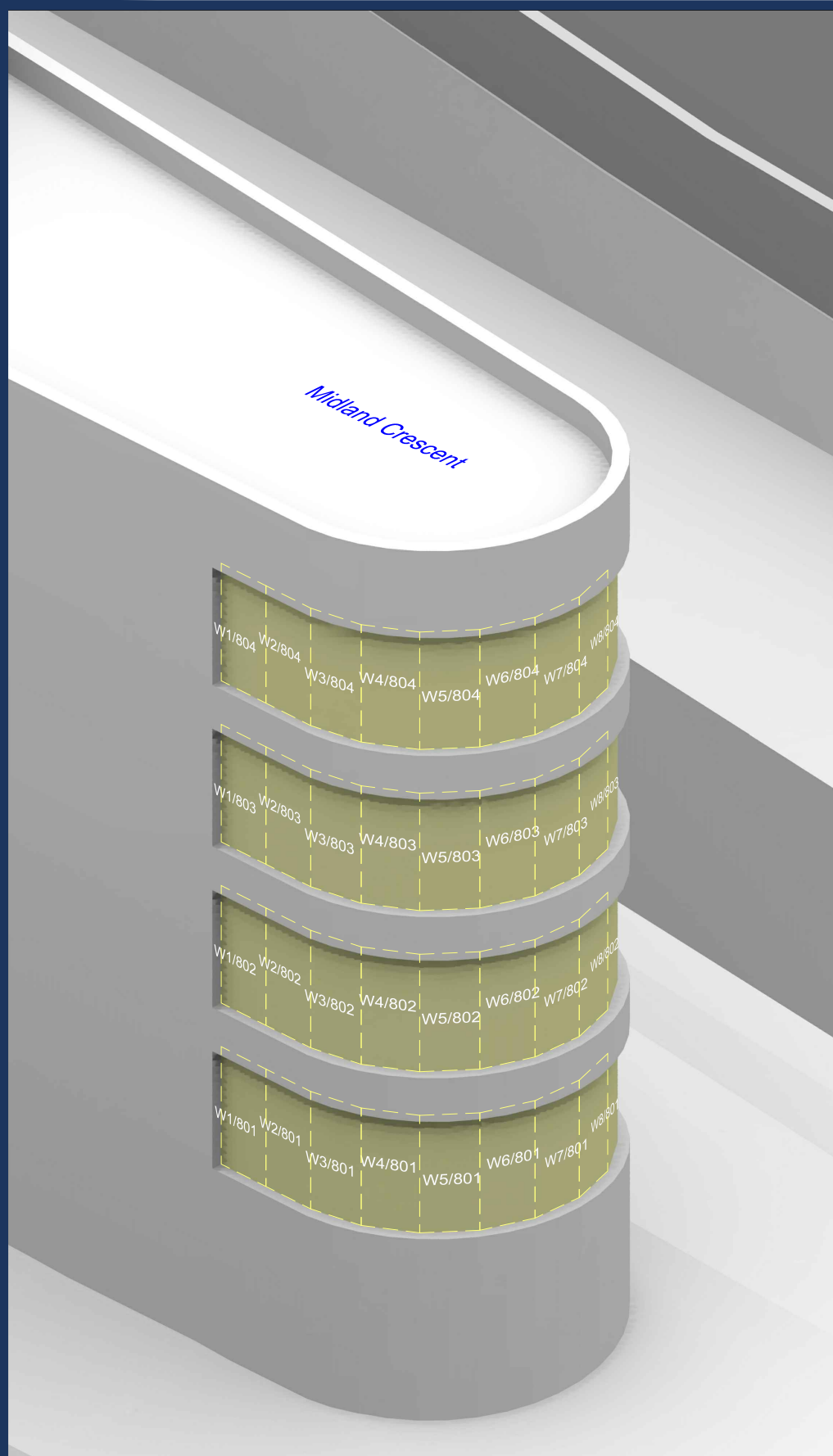
Scale:  
 NA @A3

Date:  
 Nov 2021

Dwg No:  
**P393/WM/36**

Rel:  
**29**





**Sources:** Z MAPPING  
 Survey Info (received 12/12/14)  
 Finchley Road\_121214\_Mesh.dwg

PLOWMAN CRAVEN  
 Survey Model (received 11/02/19)  
 40070RoLM-01A.dwg

ALLFORD HALL MONAGHAN MORRIS  
 Proposed Scheme Model (received 28/10/2021)  
 19066\_3D\_OPTION 59\_MASSING\_R02.DWG

**Key:**

Scheme Confirmed: -

Date: -

**Project:** O2 Centre  
 Finchley Road, London

Drawn By: NI

Scale: NA @A3

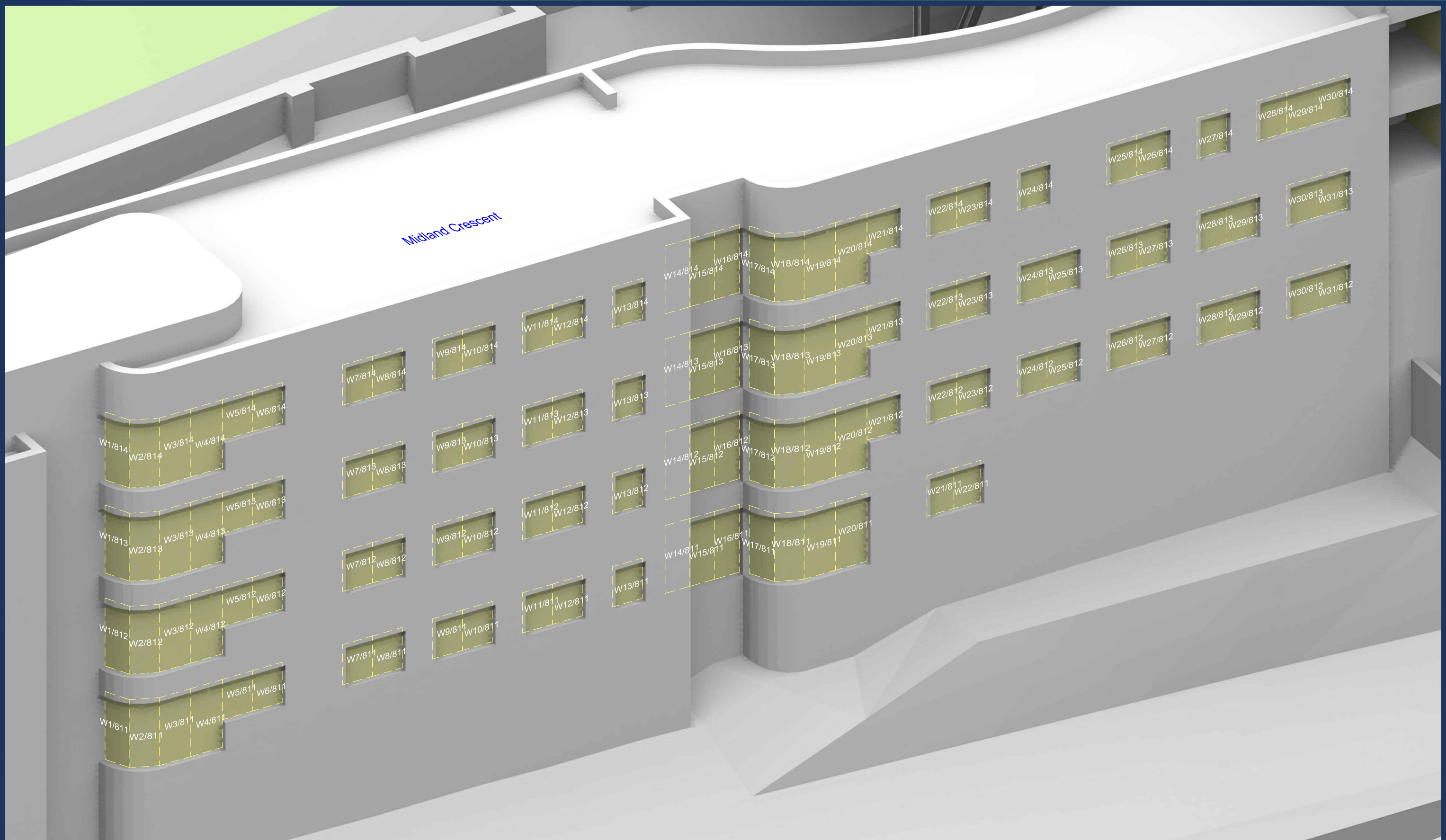
Date: Nov 2021

**Title:** Window Locations  
 Midland Crescent

Dwg No: P393/WM/37

Rel: 29





Midland Crescent

Sources: Z MAPPING  
 Survey Info (received 12/12/14)  
 Finchley Road\_121214\_Mesh.dwg

PLOWMAN CRAVEN  
 Survey Model (received 11/02/19)  
 40070RoLM-01A.dwg

ALLFORD HALL MONAGHAN MORRIS  
 Proposed Scheme Model (received 28/10/2021)  
 19066\_3D\_OPTION 59\_MASSING\_R02.DWG

Key:

Project: O2 Centre  
 Finchley Road, London

Title: Window Locations  
 Midland Crescent

Scheme Confirmed: -

Date: -

Drawn By: NI

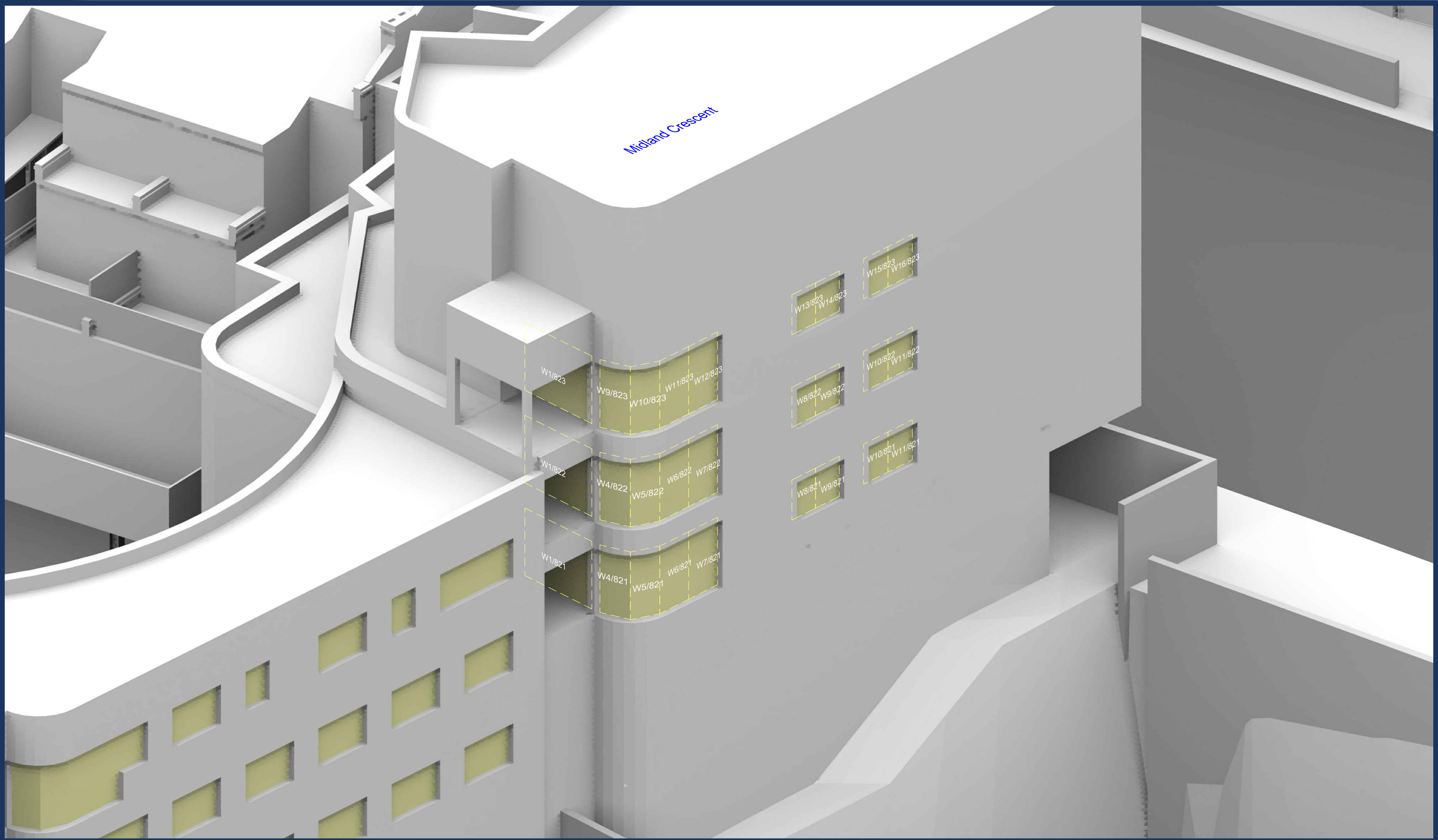
Scale: NA @A3

Date: Nov 2021

Dwg No: P393/WM/38

Rel: 29





Midland Crescent

W1/823 W9/823 W10/823 W11/823 W12/823  
 W1/822 W4/822 W5/822 W6/822 W7/822  
 W1/821 W4/821 W5/821 W6/821 W7/821

W13/823 W14/823 W15/823 W16/823  
 W8/822 W9/822 W10/822 W11/822  
 W8/821 W9/821 W10/821 W11/821

Sources: Z MAPPING  
 Survey Info (received 12/12/14)  
 Finchley Road\_121214\_Mesh.dwg

PLOWMAN CRAVEN  
 Survey Model (received 11/02/19)  
 40070RoLM-01A.dwg

ALLFORD HALL MONAGHAN MORRIS  
 Proposed Scheme Model (received 28/10/2021)  
 19066\_3D\_OPTION 59\_MASSING\_R02.DWG

Key:

Project: O2 Centre  
 Finchley Road, London

Title: Window Locations  
 Midland Crescent

Scheme Confirmed: -

Date: -

Drawn By: NI

Scale: NA @A3

Date: Nov 2021

Dwg No: P393/WM/39

Rel: 29



**Appendix 6.7.6: Existing vs. Proposed VSC Tabular Analysis Results for the Surrounding Residential Properties**