

# View 7

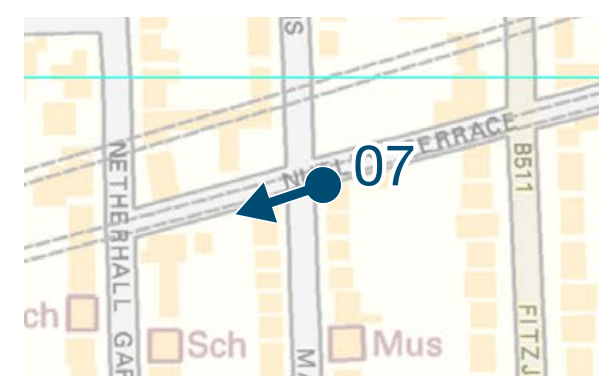
## Nutley Terrace, at the junction with Maresfield Gardens

D23062 / 24mm / 23/08/20 / 11:22

Existing



View location



24mm – 36.9°      35mm – 27.2°      50mm – 19.8°      Image scaling factor = 37% at A3, 105% at A0      50mm – 19.8°      35mm – 27.2°      24mm – 36.9°

# View 7

## Nutley Terrace, at the junction with Maresfield Gardens

D23062 / 24mm / 23/08/20 / 11:22

Proposed



24mm – 36.9°      35mm – 27.2°      50mm – 19.8°      Image scaling factor = 37% at A3, 105% at A0      50mm – 19.8°      35mm – 27.2°      24mm – 36.9°

# View 7

## Nutley Terrace, at the junction with Maresfield Gardens

D23062 / 24mm / 23/08/20 / 11:22

Cumulative



24mm – 36.9°      35mm – 27.2°      50mm – 19.8°      Image scaling factor = 37% at A3, 105% at A0      50mm – 19.8°      35mm – 27.2°      24mm – 36.9°

# View 11

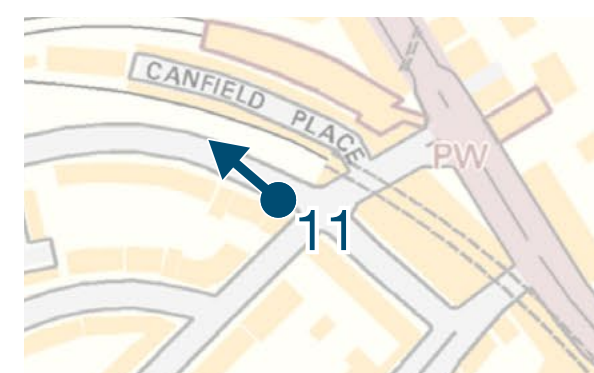
## Broadhurst Gardens, near the junction with Canfield Gardens

D17739 / 24mm / 27/11/18 / 11:19

Existing



View location



24mm – 36.9°

35mm – 27.2°

50mm – 19.8°

Image scaling factor = 37% at A3, 105% at A0

50mm – 19.8°

35mm – 27.2°

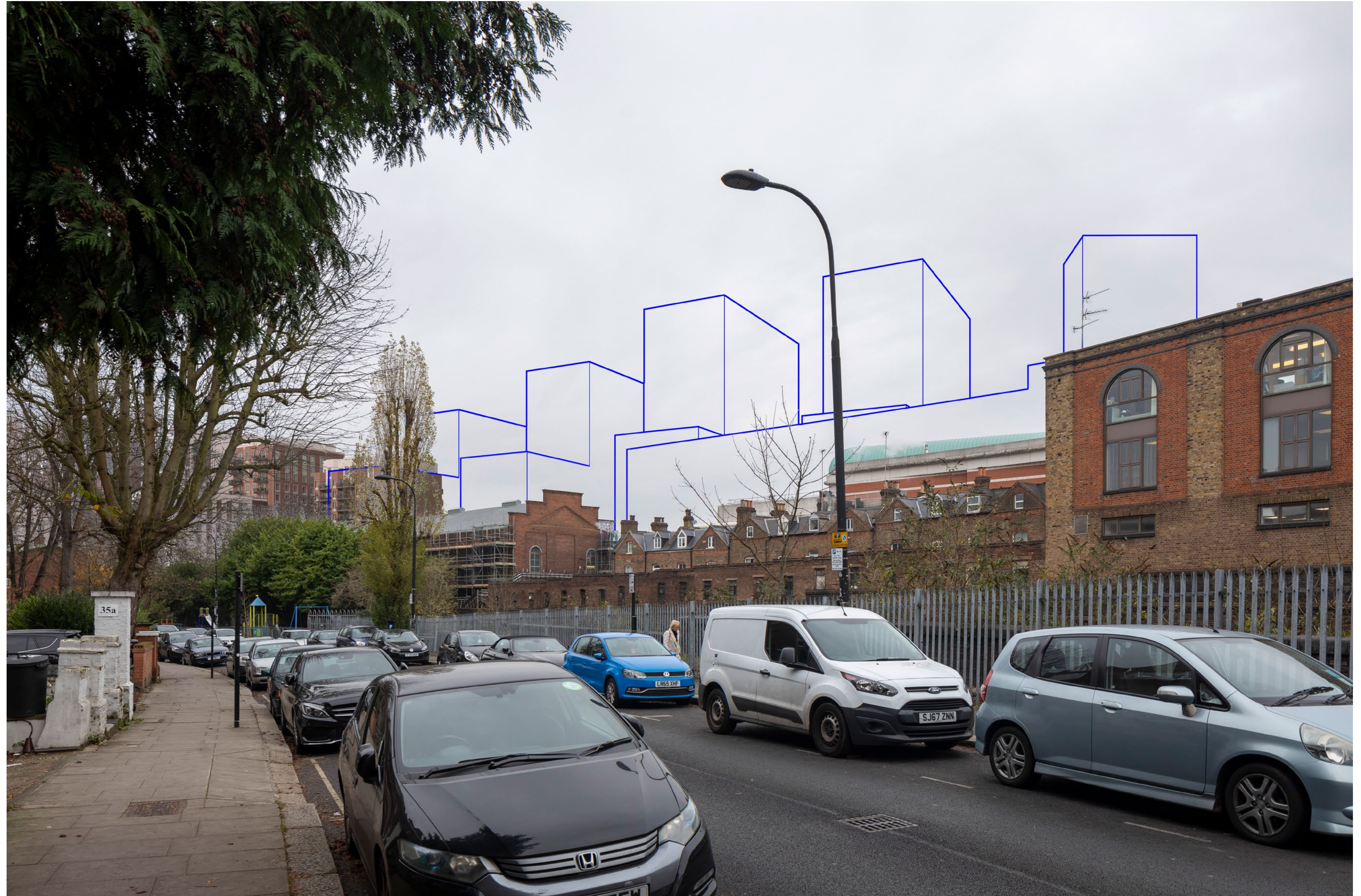
24mm – 36.9°

# View 11

Broadhurst Gardens, near the junction with Canfield Gardens

D17739 / 24mm / 27/11/18 / 11:19

Proposed



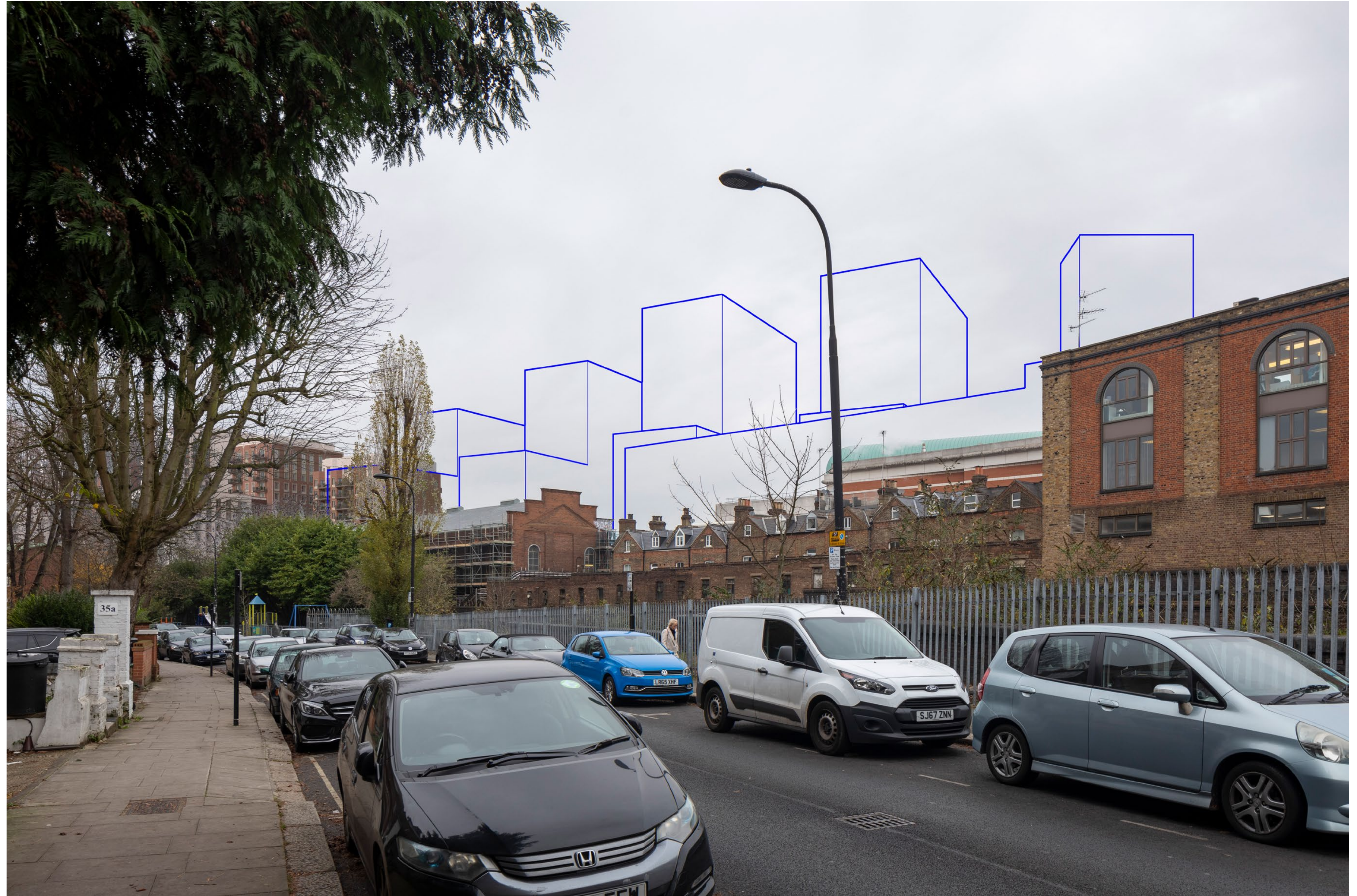
24mm – 36.9°      35mm – 27.2°      50mm – 19.8°      Image scaling factor = 37% at A3, 105% at A0      50mm – 19.8°      35mm – 27.2°      24mm – 36.9°

# View 11

Broadhurst Gardens, near the junction with Canfield Gardens

D17739 / 24mm / 27/11/18 / 11:19

Cumulative



24mm – 36.9°

35mm – 27.2°

50mm – 19.8°

Image scaling factor = 37% at A3, 105% at A0

50mm – 19.8°

35mm – 27.2°

24mm – 36.9°